

## Lincoln University Dairy Farm - Farm Walk notes

Tuesday 20<sup>th</sup> June 2017

**LUDF – focus for 2017/18 Season: Nil-Infrastructure, low input, low N-loss, maximise profit.**  
Farm system comprises 3.5 cows/ha (peak milked), Target up to 170kgN/ha, 300kgDM/cow imported supplement, plus winter most cows off farm. FWE of less than \$1.1 million and Target production of over 500kgMS/cow (>100% liveweight in milk production).

### Critical issues for the short term

1. Monitor cows on wintering for health issues.
2. Monitor average pasture cover and shape of the wedge on the milking platform to meet planned cover at end of July (start of calving).
3. Watch cow BCS to ensure all cows meet BCS targets at calving (min 5 for MA cows and 5.5 for R2's and R3yr's)
4. Preparedness for calving (resources, staff and routines)

### Key Numbers - week ending Tuesday 20<sup>th</sup> June 2017

Ave Past Cover	2312 kgDM/ha	Past Growth Rate	11 kgDM/ha/day (3 week's average)
Round length	0 (for 160 ha)	Ave Supplement used	0
No Cows on farm	0	Ave Soil Temp (week)	6.5 °C

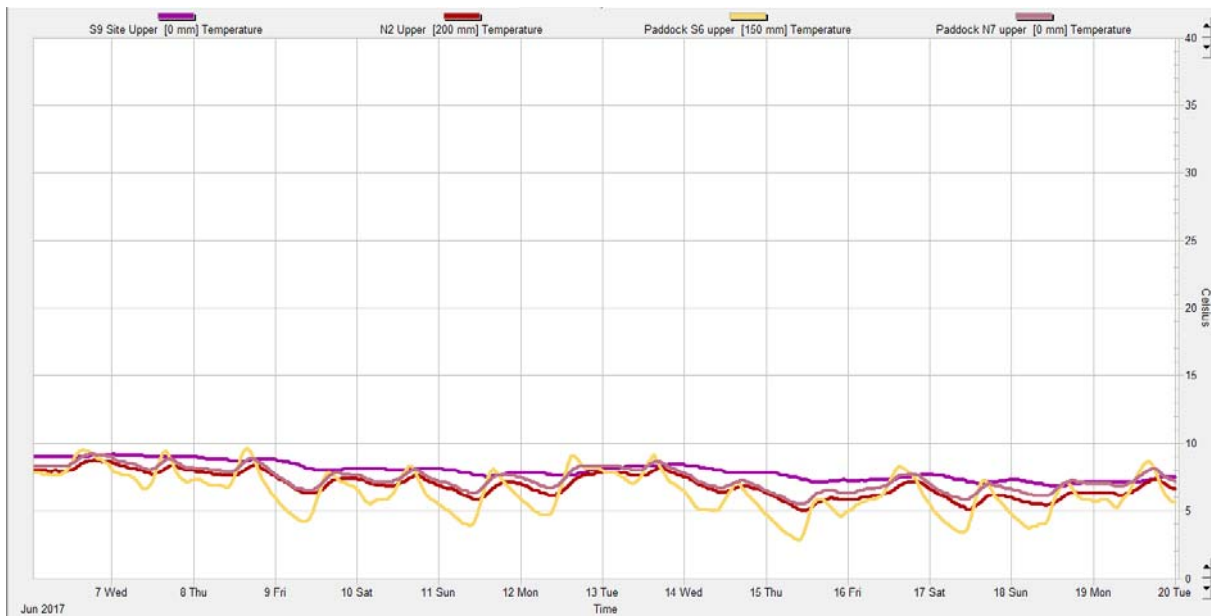
### Herd Management

5. There are no cows on the milking platform at this stage.
6. 566 cows are being wintered at Silverwood farm and 13 lame cows have remained close-by and are being grazed at Jackie's (neighbouring farm)
7. At Silverwood, the herd has been split in 3 mobs:
  - a. Light and early calving cows. Offered 11 kg FB/cow/day and 5 kgDM/cow/day silage
  - b. Middle BCS cows: 11 kg FB/cow/day and 3 kg DM/cow/day silage.
  - c. Fat cows: 7 kgDM FB/cow/day and 3 kgDM/cow/day low energy silage. These will be in grass paddocks overnight to avoid break out problems.
8. 1 cow and 1 heifer have slipped; and there were 3 cows treated for acidosis and 11 cows treated for lameness.
9. The first load of (early-calving) heifers will be brought back from Silverwood around the 10<sup>th</sup> July.

### Growing Conditions

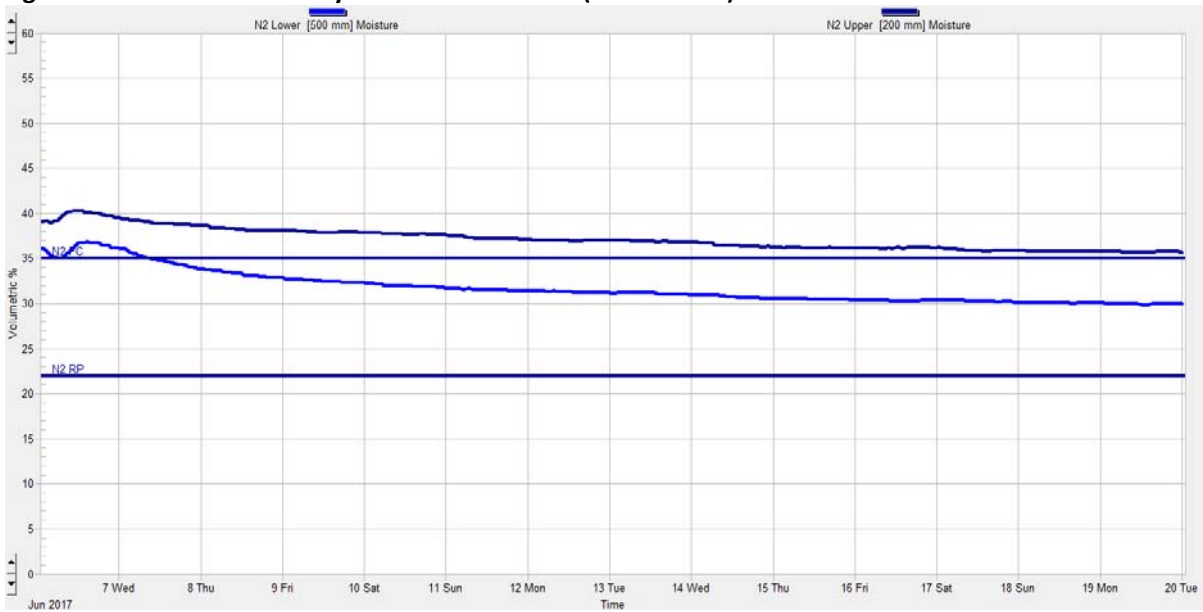
10. The average 9 am soil temperature has continued to drop over the past three weeks and is now 6.5 °C (0.5°C below this same time last season).
11. There have only been 2 frosts so far.

### Figure 1: Soil temperature history for the last 2 weeks



12. The farm received its last rainfall in the early part of June.

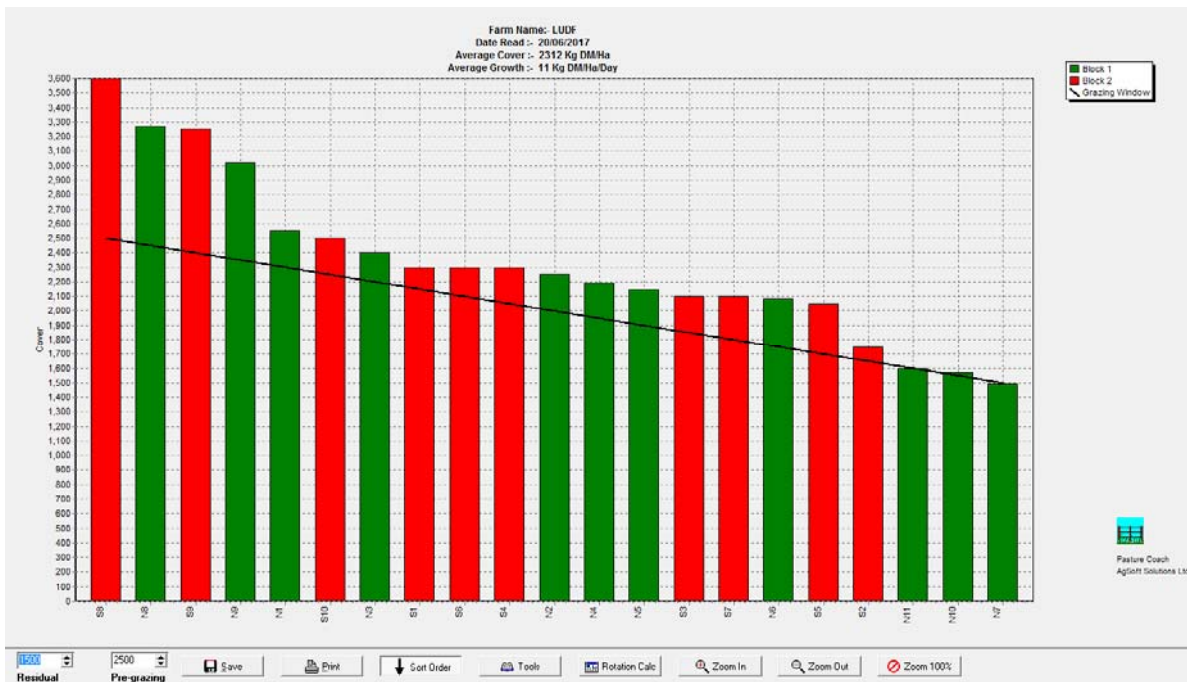
**Figure 2: Soil moisture history for the last 2 weeks (Paddock N2).**



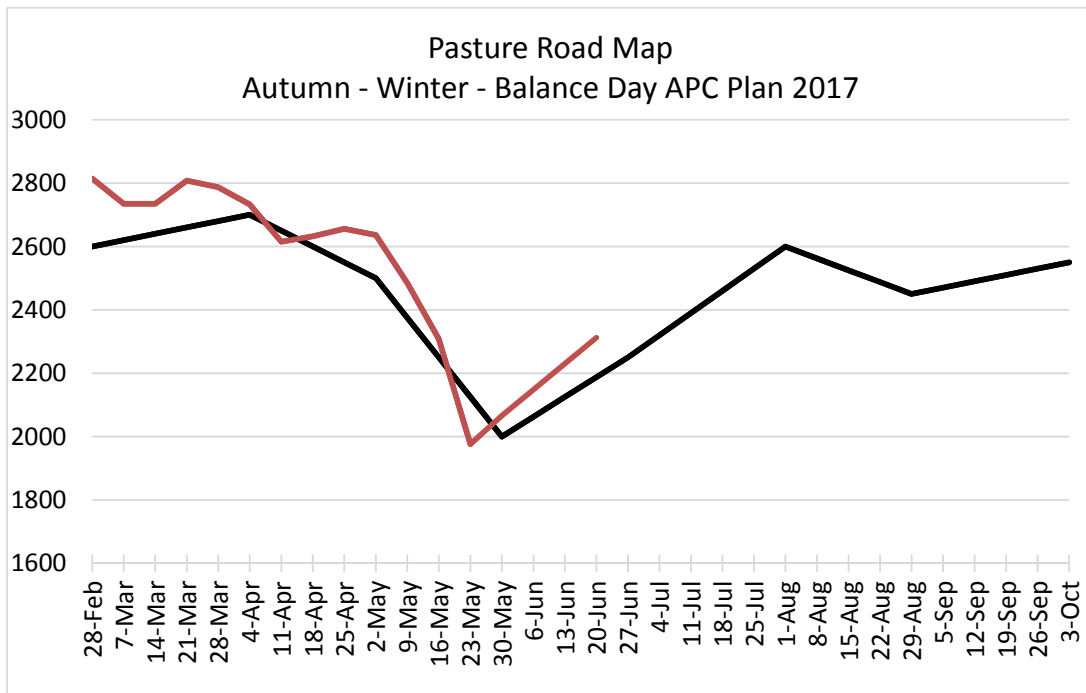
### Pasture and Feed Management

- 13. The farm is looking good, even though paddocks are soft underfoot. There is no dead matter in the pasture, even in paddocks with the highest covers.
- 14. Some heavy rolling has occurred on areas that were pugged with the autumn rain, and more will be done as conditions allow.
- 15. The highest current cover is in paddock S9 with 3600 kgDM/ha.

**Figure 3: This week's feed wedge**



16. Below is our Pasture Road map to track covers through this period.



**Feeding Management for the coming month:**

- 17. There will be no animals on platform until heifers start calving.
- 18. We expect to continue accumulating cover on the farm until August when demand will increase as cows are brought onto the platform as they calf. Springers can be brought back onto the farm earlier if required to manage any higher cover paddocks to maintain pasture quality.
- 19. Wintering of the herd is going well, cows will be condition scored again in early July to assess BCS gains through the first month of winter. At that time, tweaks may be made to feeding levels and or groups of cows to ensure as much as possible all MA cows calve at BCS of 5 and all first and second calving heifers calve at BCS of 5.5. (and no cows are over-fat).

Note that farm walks will be no happen on **4<sup>th</sup> July and 18<sup>th</sup> July at 9am**, then weekly from 1<sup>st</sup> August.

LUDF Weekly report	23-May-17	30-May-17	6-Jun-17	13-Jun-17	20-Jun-17
Farm grazing ha (available to milkers)	160	160	160	160	160
Dry Cows on farm / East blk /Jackies/other	66/0/0/0	32/0/0/437	0/0/13/566	0/0/13/566	0/0/13/566
Culls (Includes culls put down & empties)	0	0	0	0	0
Culls total to date	22	22	0	0	0
Deaths (Includes cows put down)	1	2	0	0	0
Deaths total to date	18	20	0	0	0
Calved Cows available (Peak Number 560...)	474	0	0	0	0
Treatment / Sick mob total	2	0	0	0	0
Mastitis clinical treatment	1	0	0	0	0
Mastitis clinical YTD (tgt below 64 yr end)	75	75	0	0	0
Bulk milk SCC (tgt Avg below 150)	185	238	0	0	0
Lame new cases	10	0	0	0	0
Lame ytd	219	219	0	0	0
Lame days YTD (Tgt below 1000 yr end)	5614	5614	0	0	0
Other/Colostrum	0	0	0	0	0
Milking twice a day into vat	441	0	0	0	0
Milking once a day into vat	31	0	0	0	0
Small herd	0	0	0	0	0
Main Herd	472	0	0	0	0
MS/cow/day (Actual kg / Cows into vat only)	1.30	1.28	0.00	0.00	0.00
Milk Protein/Fat ratio	0.82	0.80			
Milk Fat %	6.23	6.40			
Milk Protein %	5.09	5.14			
MS/cow to date (total kgs / Peak Cows 560	514	516	0	0	0
MS/ha/day (total kgs / ha used	3.83	0.90	0.0	0.0	0.0
Herd Average Cond'n Score	4.30	0.00	0.00	0.00	0.00
Monitor group LW kg WOW 281 early calvers	501	0	0	0	0
Soil Temp Avg Aquaflex	8.0	7.7	8.5	7.1	6.5
Growth Rate (kgDM/ha/day)	20	22	0	0	11
Plate meter height - ave half-cms	10.5	11.2	0.0	0.0	12.9
Ave Pasture Cover (x140 + 500)	1976	2066	0	0	2312
Surplus/[deficit] on feed wedge- tonnes	0	0	0	0	0
Pre Grazing cover (ave for week)	3070	0	0	0	0
Post Grazing cover (ave for week)	1600	1500	0	0	0
Highest pregrazing cover	3400	0	0	0	0
Area grazed / day (ave for week)	7.40	0.49	0.00	0.00	0.00
Grazing Interval	22	327			
Milkers Offered/grazed kg DM pasture	0.0	0.0	0.0	0.0	0.0
Estimated intake pasture MJME	0	0	0	0	0
Milkers offered kg DM Grass silage	0	0	0	0	0
Silage MJME/cow offered	0	0	0	0	0
Estimated intake Silage MJME	0	0	0	0	0
Estimated total intake MJME	0	0	0	0	0
Target total MJME Offered/eaten (includes 6% waste)	0	0	0	0	0
Pasture ME (pre grazing sample)	0.0	0.0	0.0	0.0	0.0
Pasture % Protein	0.0	0.0	0.0	0.0	0.0
Pasture % DM - Concern below 16%	0.0	0.0	0.0	0.0	0.0
Pasture % NDF Concern < 33	0.0	0.0	0.0	0.0	0.0
Mowed pre or post grazing YTD	277.2	277.2			
Total area mowed YTD	310.4	310.4			

Supplements fed to date kg per cow (555peak)	500.9	500.9	0.0	0.0	0.0
Supplements Made Kg DM / ha cumulative	361.47	361.47	0	0	0
Units N applied/ha and % of farm	0	0	0	0	0
Kgs N to Date (whole farm)	173	173	0	0	0
Rainfall (mm)	24.4	0.6	0	0	0
Aquaflex topsoil relative to fill point target 60 - 80%	100-100	90-100	0	0	0

Next farm walks: **Tuesday 4<sup>th</sup> July and 18<sup>th</sup> July at 9am**, then weekly from 1<sup>st</sup> August. Farmers or their managers and staff are always welcome to walk with us. Please call to notify us of your intention and bring your plate meter and gumboots. Phone SIDDC – 03 423 0022.

---

Peter Hancox, Farm Manager, Natalia Benquet, Chris Norton.