

Lincoln University Dairy Farm - Farm Walk notes

Tuesday 17th June 2014

Critical issues for the short term

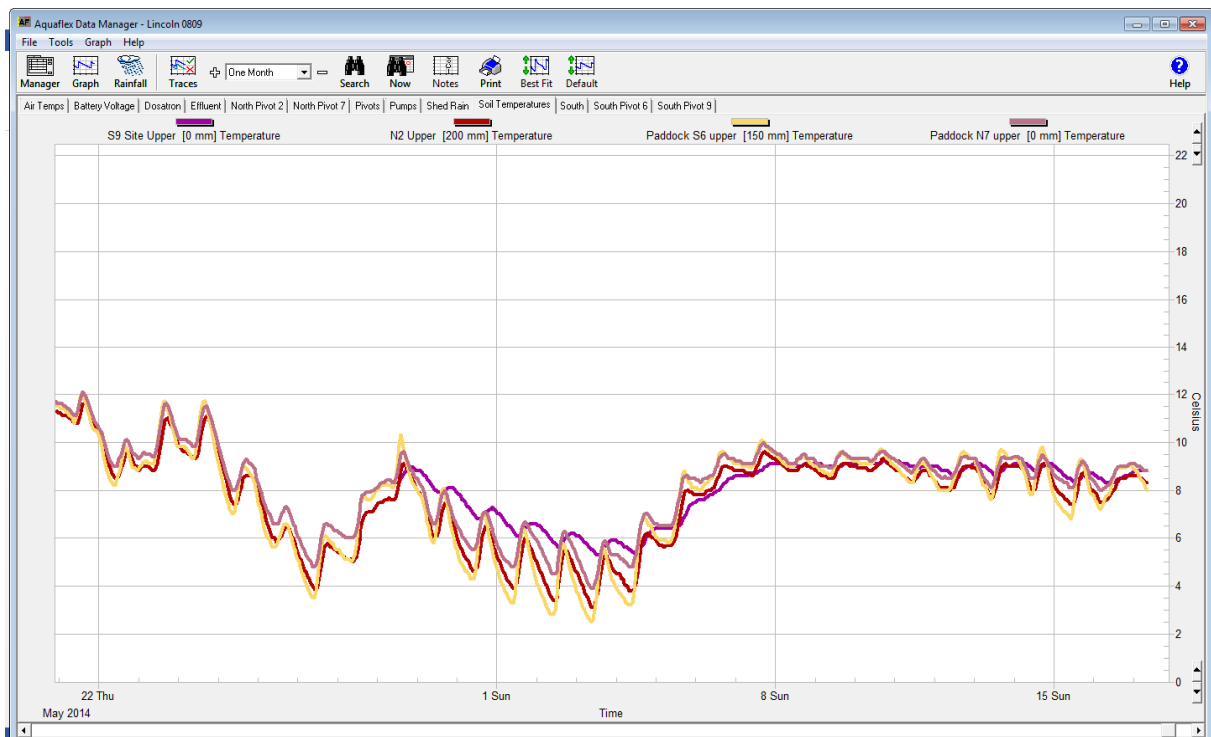
1. **Achieving target grazing residuals and manage pasture cover to achieve desired target at calving.**
2. **Use dry cows to manage pasture cover and graze out paddock which need tidying up.**
3. **Use back-fences on all herds whenever paddock grazing takes more than 36 hours.**
4. **Manage ground conditions minimise damage to soil and pastures.**
5. **Monitor Cows on winter grazing to achieve targets at calving**
6. **Get programmed winter maintenance done.**

Herd Management

1. We currently have 63 cows on farm. These are our fattest cows and we have kept these on farm as we can on /off graze them if ground conditions become wet as they are currently. Over the last two weeks these cows have spent time standing on concrete and were moved off farm to our nearby lease block for 6 days after the 35mls of rain we got early last week. They returned back to the platform yesterday.

Growing Conditions

2. 9 am average soil temperature was 8.3 degrees, 3.2 degrees warmer than 2 weeks ago.
3. The farm had 34.8mm rain over the last week.
4. Soil temperature and soil moisture graphs follow showing soil temperature over the last 4 weeks. Soil temperature has increased due to the lack of frosts



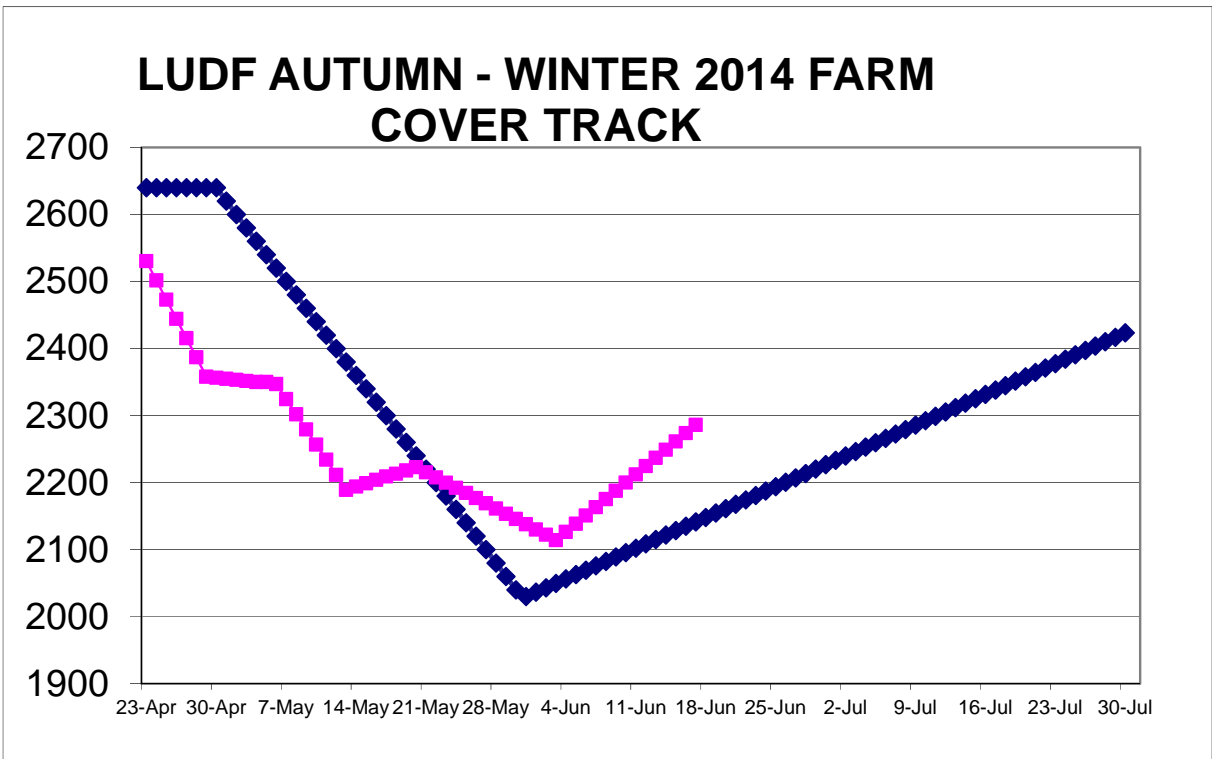


Pasture Production and Management

- 5. This weeks measured average pasture cover is 2286 kgDM/ha up 172 kg DM/ha, from two weeks ago. Our estimated average daily pasture growth rate for the last two weeks has been 27 kg DM/ha.

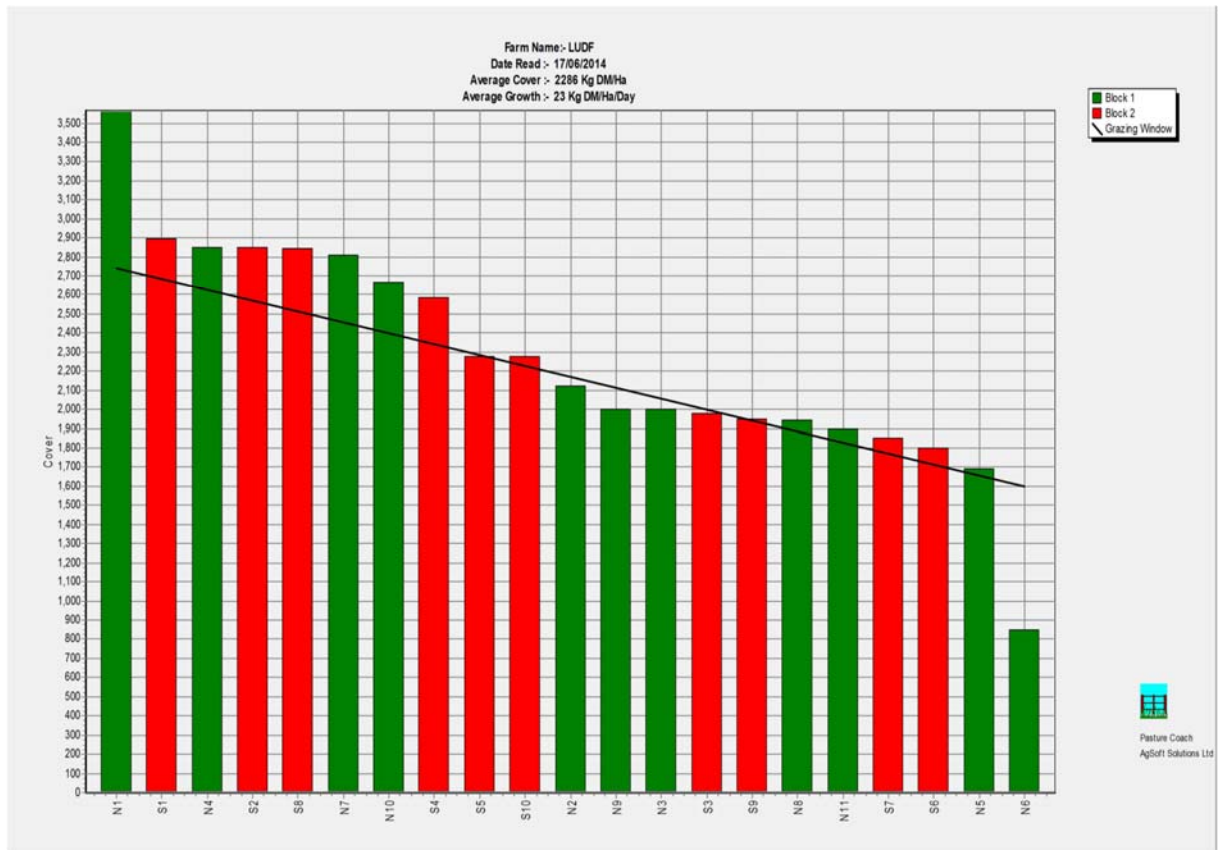
Feeding Management

- 6. Below is our Autumn Winter Farm average pasture cover track, the budgeted track is how we would normally plan to run the farm.



- 7.

8. Below is the feed wedge for this week, this is done on the basis of having 63 cows on farm and APC target of 2114kg DM/ha. We currently have a 17.1 tonne surplus.



Herd Management and Mating

9. The herd was body condition scored before leaving for winter grazing, the average was still 4 and 10% were below BCS 4.0. We are confident that we will meet our required targets (every cow minimum 5 Cs at calving and first and second calvers 5.5 at calving). To achieve this we have put our lowest Cs early calving cows (127) on grass and silage 12Kg Dm of grass and 4Kg Dm of silage offered, our later calving and better condition score cows (270) have gone on crop 12 Kg Dm crop and 2Kg Dm oat balage this is part of the P21 research project. We will keep our fattest 63 cows on the milking platform over winter to help keep the shape of our feed wedge as we have the option of removing these if growth gets too low. Of the 507 cows condition scored, 49 were below 4.0, 75 were above 4.5 and the balance are still between 4.0 and 4.5 hence are recorded as a 4.0 score.
10. Data sheet

LUDF Weekly report	20-May-14	3-Jun-14	10-Jun-14	17-Jun-14
Farm grazing ha (available to milkers)	160	160	160	160
Dry Cows on farm / East blk /Jackies/other	126/0/0	116/0/0/517	68/0/0/517	63/0/0/517
Culls (Includes culls put down & empties)	0	0	0	0
Culls total to date	132	0	0	0
Deaths (Includes cows put down)	0	0	0	0
Deaths total to date	5	0	0	0
Calved Cows available (Peak Number 630...)	259	0	0	0
Treatment / Sick mob total	0	0	0	0
Mastitis clinical treatment	0	0	0	0
Mastitis clinical YTD (tgt below 64 yr end)	91	0	0	0
Bulk milk SCC (tgt Avg below 150)	256	0	0	0
Lame new cases	0	0	0	0
Lame ytd	131	0	0	0

Lame days YTD (Tgt below 1000 yr end)	818	0	0	0
Other/Colostrum	0/0	0	0	0
Milking twice a day into vat	0	0	0	0
Milking once a day into vat	259	0	0	0
Small herd	0	0	0	0
Main Herd	259	0	0	0
MS/cow/day (Actual kg / Cows into vat only)	0.95	0.00	0.00	0.00
MS/cow to date (total kgs / Peak Cows 630	439	0	0	0
MS/ha/day (total kgs / ha used	1.54	0.0	0.0	0.0
Herd Average Cond'n Score	4.00	0.00	0.00	0.00
Monitor group LW kg WOW 347 early MA calvers	0	0	0	0
Soil Temp Avg Aquaflux	9.1	5.1	0.0	8.3
Growth Rate (kgDM/ha/day)	0	11	0	27
Plate meter height - ave half-cms	-3.6	11.5	0.0	12.8
Ave Pasture Cover (x140 + 500)	0	2114	0	2286
Surplus/[deficit] on feed wedge- tonnes	0	9.6	0	17.1
Pre Grazing cover (ave for week)	2964	2690	0	0
Post Grazing cover (ave for week)	1550	1500	0	0
Highest pregrazing cover	3335	3594	0	0
Area grazed / day (ave for week)	3.60	1.97	0.00	0.00
Grazing Interval	43	81	0	0
Milkers Offered/grazed kg DM pasture	0.0	0.0	0.0	0.0
Estimated intake pasture MJME	0	0	0	0
Milkers offered kg DM Grass silage	0	0	0	0
Silage MJME/cow offered	0	0	0	0
Estimated intake Silage MJME	0	0	0	0
Estimated total intake MJME	0	0	0	0
Target total MJME Offered/eaten (incl. 6% waste)	0	0	0	0
Pasture ME (pre grazing sample)	0.0	0.0	0.0	0.0
Pasture % Protein	0.0	0.0	0.0	0.0
Pasture % DM - Concern below 16%	0.0	0.0	0.0	0.0
Pasture % NDF Concern < 33	0.0	0.0	0.0	0.0
Mowed pre or post grazing YTD	0.0			
Total area mowed YTD	367.7			
Supplements fed to date kg per cow (630 peak)	506.8	0.0	0.0	0.0
Supplements Made Kg DM / ha cumulative	0	0	0	0
Units N applied/ha and % of farm	0	0	0	0
Kgs N to Date (whole farm)	250	0	0	0
Rainfall (mm)	24	7.8	4	34.8
Aquaflux topsoil relative to fill point target 60 - 80%	90-100	100	100	100

Farm walks occur every Tuesday morning (currently every second Tuesday during winter). Farmers or their managers and staff are always welcome to walk with us. Please call to notify us of your intention and bring your plate meter and gumboots. Phone SIDDC – 03 423 0022.

Peter Hancox, Farm Manager

Lincoln University Dairy Farm - Farm Walk notes

Tuesday 3rd June 2014

Critical issues for the short term

1. **Achieving target grazing residuals and manage pasture cover to achieve desired target at calving.**
2. **Use dry cows to manage pasture cover and graze out paddock which need tidying up.**
3. **Use back-fences on all herds whenever paddock grazing takes more than 36 hours.**
4. **Manage ground conditions minimise damage to soil and pastures.**
5. **Monitor Cows on winter grazing to achieve targets at calving**
6. **Get programmed winter maintenance done.**

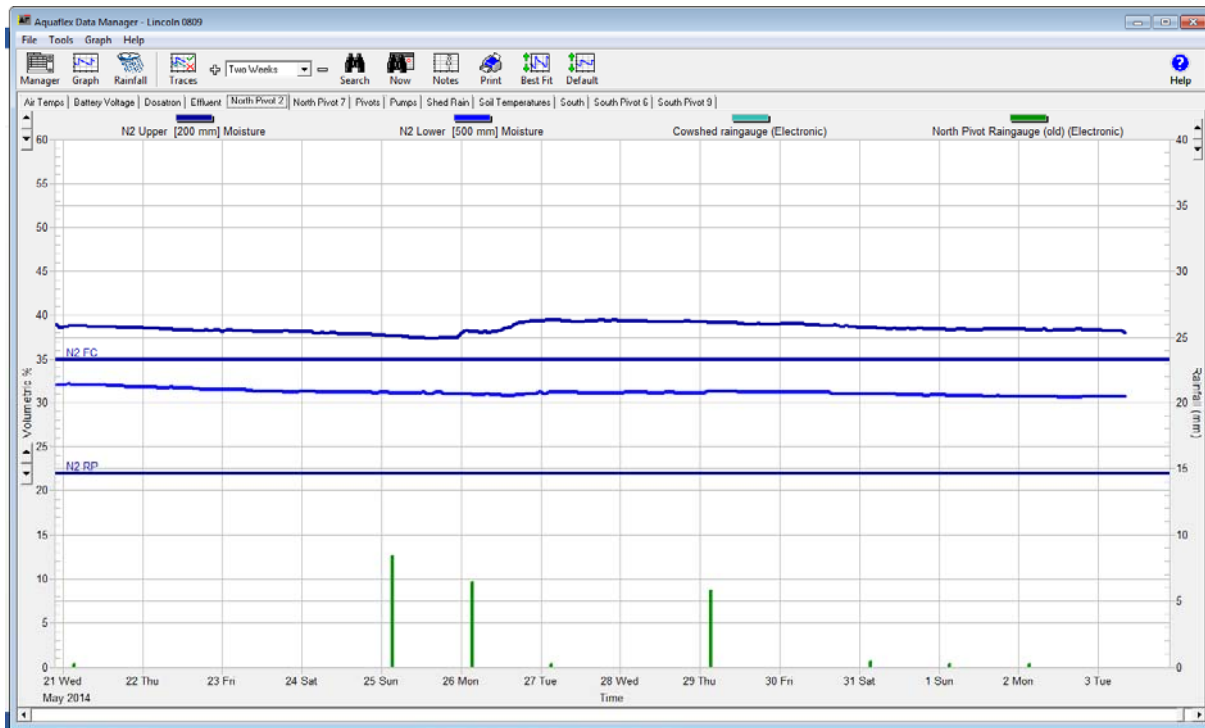
Herd Management

1. All cows have now been dried off. We have 116 cows on farm at the moment, we still have 16 culls and 34 surplus cows to go. We have not rushed to get rid of these because of the surplus feed we have had available on the milking platform but they will leave the farm over the next week. 66 of the remaining cows will stay on farm / nearby over the winter.
2. All cows were teat sealed, cows that had exceeded the SCC threshold [150,000 for cows and 120,000 for heifers] got long acting dry cow therapy, and all others got short acting.

Growing Conditions

3. 9 am average soil temperature was 5.1 degrees 2.6 degrees cooler than last week.
4. The farm had 7.8mm rain over the week.
5. Soil temperature and soil moisture graphs follow showing soil temperature over the last 2 weeks. Soil temperature continued to decline as a result of continued frosts



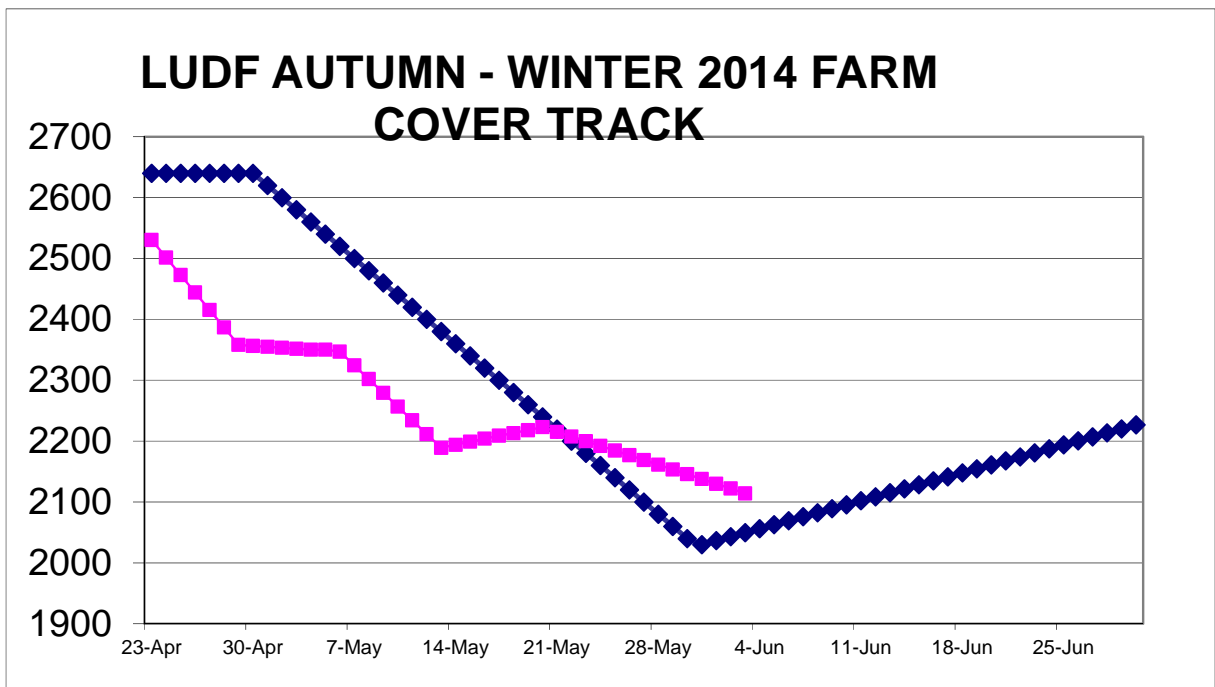


Pasture Production and Management

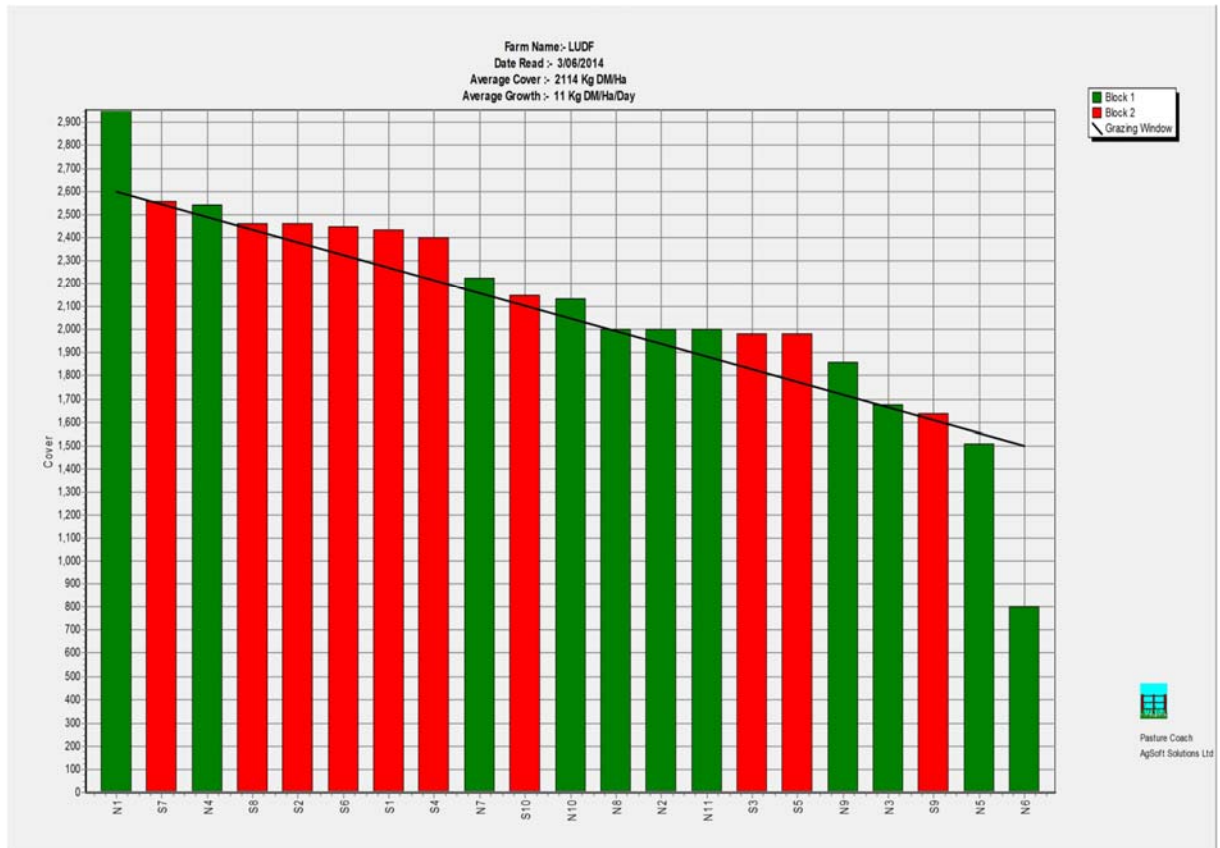
- 6. This weeks measured average pasture cover is 2114 kgDM/ha down 55 kg DM/ha, from last week. Our estimated average daily pasture growth rate for the last week has been 11 kg DM/ha.
- 7. The round length was 81 days this week [from 65].

Feeding Management

- 8. Below is our Autumn Winter Farm average pasture cover track, the budgeted track is how we would normally plan to run the farm.



9. Below is the feed wedge for this week, this is done on the basis of having 116 cows on farm and APC target of 2050kg DM/ha. We currently have a 9.6 tonne surplus but expect this to be taken care of with the surplus cows still on farm



10.

Herd Management and Mating

11. The herd was body condition scored before leaving for winter grazing, the average was still 4 and 10% were below BCS 4.0. We are confident that we will meet our required targets (every cow minimum 5 Cs at calving and first and second calvers 5.5 at calving). To achieve this we have put our lowest Cs early calving cows (127) on grass and silage 12Kg Dm of grass and 4Kg Dm of silage offered, our later calving and better condition score cows (270) have gone on crop 12 Kg Dm crop and 2Kg Dm oat balage this is part of the P21 research project. We will keep our fattest 66 cows on the milking platform over winter to help keep the shape of our feed wedge as we have the option of removing these if growth gets too low. Of the 507 cows condition scored, 49 were below 4.0, 75 were above 4.5 and the balance are still between 4.0 and 4.5 hence are recorded as a 4.0 score.
12. Data sheet

LUDF Weekly report	13-May-14	13-May-14	20-May-14	3-Jun-14
Farm grazing ha (available to milkers)	160	160	160	160
Dry Cows on farm / East blk /Jackies/other	0/0/151	0/0/248	126/0/0	116/0/0/517
Culls (Includes culls put down & empties)	0	0	0	0
Culls total to date	132	132	132	0
Deaths (Includes cows put down)	0	0	0	0
Deaths total to date	5	5	5	0
Calved Cows available (Peak Number 630...)	361	259	259	0
Treatment / Sick mob total	6	1	0	0
Mastitis clinical treatment	4	4	0	0
Mastitis clinical YTD (tgt below 64 yr end)	87	91	91	0
Bulk milk SCC (tgt Avg below 150)	344	266	256	0
Lame new cases	4	0	0	0

Lame ytd	131	131	131	0
Lame days YTD (Tgt below 1000 yr end)	818	818	818	0
Other/Colostrum	0/0	0/0	0/0	0
Milking twice a day into vat	0	0	0	0
Milking once a day into vat	357	255	259	0
Small herd	0	0	0	0
Main Herd	357	255	259	0
MS/cow/day (Actual kg / Cows into vat only)	1.11	1.07	0.95	0.00
MS/cow to date (total kgs / Peak Cows 630	433	436	439	0
MS/ha/day (total kgs / ha used	2.47	1.70	1.54	0.0
Herd Average Cond'n Score	4.10	0.00	4.00	0.00
Monitor group LW kg WOW 347 early MA calvers	0	0	0	0
Soil Temp Avg Aquaflex	9.8	9.8	9.1	5.1
Growth Rate (kgDM/ha/day)	41	20	0	11
Plate meter height - ave half-cms	13.2	12.1	-3.6	11.5
Ave Pasture Cover (x140 + 500)	2347	2189	0	2114
Surplus/[deficit] on feed wedge- tonnes	9.7	[6.7]	0	9.6
Pre Grazing cover (ave for week)	3087	3109	2964	2690
Post Grazing cover (ave for week)	1800	1650	1550	1500
Highest pregrazing cover	3356	3365	3335	3594
Area grazed / day (ave for week)	4.20	3.71	3.60	1.97
Grazing Interval	36	41	43	81
Milkers Offered/grazed kg DM pasture	0.0	0.0	0.0	0.0
Estimated intake pasture MJME	0	0	0	0
Milkers offered kg DM Grass silage	0	0	0	0
Silage MJME/cow offered	0	0	0	0
Estimated intake Silage MJME	0	0	0	0
Estimated total intake MJME	0	0	0	0
Target total MJME Offered/eaten (incl. 6% waste)	0	0	0	0
Pasture ME (pre grazing sample)	11.7	0.0	0.0	0.0
Pasture % Protein	21.8	0.0	0.0	0.0
Pasture % DM - Concern below 16%	14.0	0.0	0.0	0.0
Pasture % NDF Concern < 33	42.4	0.0	0.0	0.0
Mowed pre or post grazing YTD	0.0	0.0	0.0	
Total area mowed YTD	367.7	367.7	367.7	
Supplements fed to date kg per cow (630 peak)	506.8	506.8	506.8	0.0
Supplements Made Kg DM / ha cumulative	0	0	0	0
Units N applied/ha and % of farm	0	0	0	0
Kgs N to Date (whole farm)	250	250	250	0
Rainfall (mm)	29	31	24	7.8
Aquaflex topsoil relative to fill point target 60 - 80%	100	100	90-100	100

Farm walks occur every Tuesday morning. Farmers or their managers and staff are always welcome to walk with us. Please call to notify us of your intention and bring your plate meter and gumboots. Phone SIDDC – 03 423 0022.

Peter Hancox, Farm Manager