

Lincoln University Dairy Farm - Farm Walk notes

Tuesday 30-June 2015

LUDF – focus for 2015/16 Season: Nil-Infrastructure, low input, low N-loss, high profit.
Farm system comprises 3.5 cows/ha (peak milked), 150kgN/ha, 300kgDM/cow imported supplement, plus winter most cows off farm. FWE of less than \$1.12million and Target production of 500kgMS/cow.

Critical issues for the short term

1. Monitor cows on winter pasture and silage to achieve required condition score at calving
2. Monitor average pasture cover on the milking platform
3. Use back fences
4. Observing cows for signs of mastitis

Key Numbers - week ending Tuesday 16 June 2015

Ave Past Cover	2076KgDM/ha	Past Growth Rate	1 kgDM/ha/day
Round length	615 days	Ave Supplement used	0 kgDM/cow/day
No Cows on farm	24	Ave Soil Temp (week)	3.6 degrees

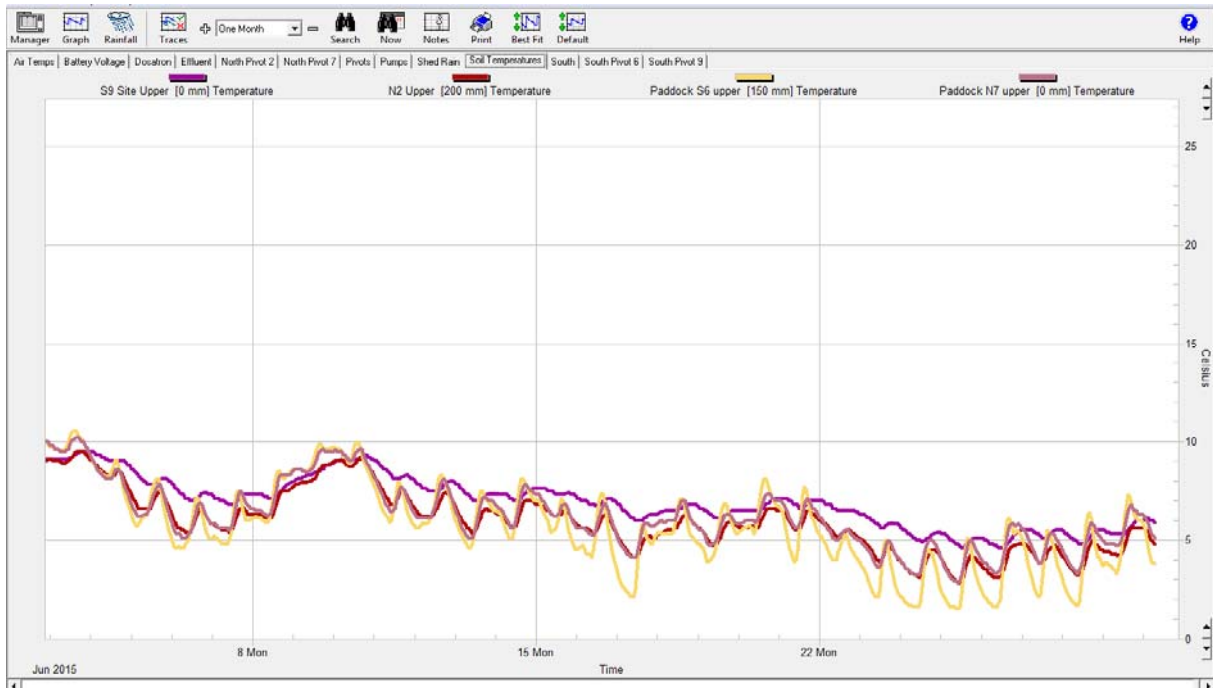
Herd Management

5. We are currently managing 24 dry cows on farm
6. 122 of our light early calving cows went to winter grazing on Saturday 30th May. They are offered 16 Kg DM per cow made up of 14 kgDM grass and 2kgDM of silage. Another 225 cows went to winter grazing on the 3rd of June and are offered 14 Kg DM made up of 12 kgDM of grass and 2kgDM of silage. These will be split into 2 mobs on calving date giving us the option of leaving one mob out grazing into August if required.
7. The balance of the MA cows (80) were on the platform until 18th June when they moved next door to the runoff (due to limited winter growth on the milking platform)
8. BCS done at the end of May recorded an average BCS of 4.55, increasing 0.14 of a condition score from 2 weeks before. 328 cows (72.8%) were either 4 or 4.5 BCS, giving a very narrow range. Of the remainder, 4 were below BCS 4 and 78 are BCS 5 or greater.

Growing Conditions

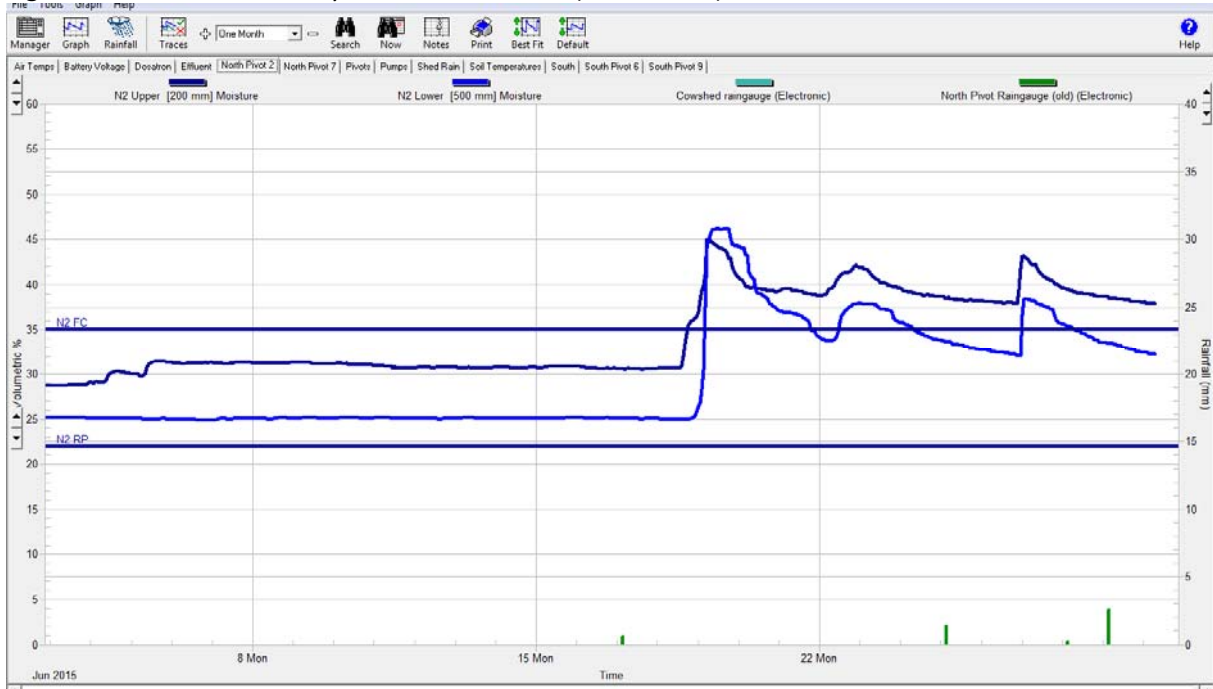
9. 9 am average soil temperature for the week was 3.6 degrees (1.4 degrees lower than 2 weeks earlier).

Figure 1: Soil temperature history for the last 4 weeks



10. We have had 49.2 mills of rain over the last 2 weeks.

Figure 2: Soil moisture history for the last 4 weeks (Paddock N2).



Pasture Management

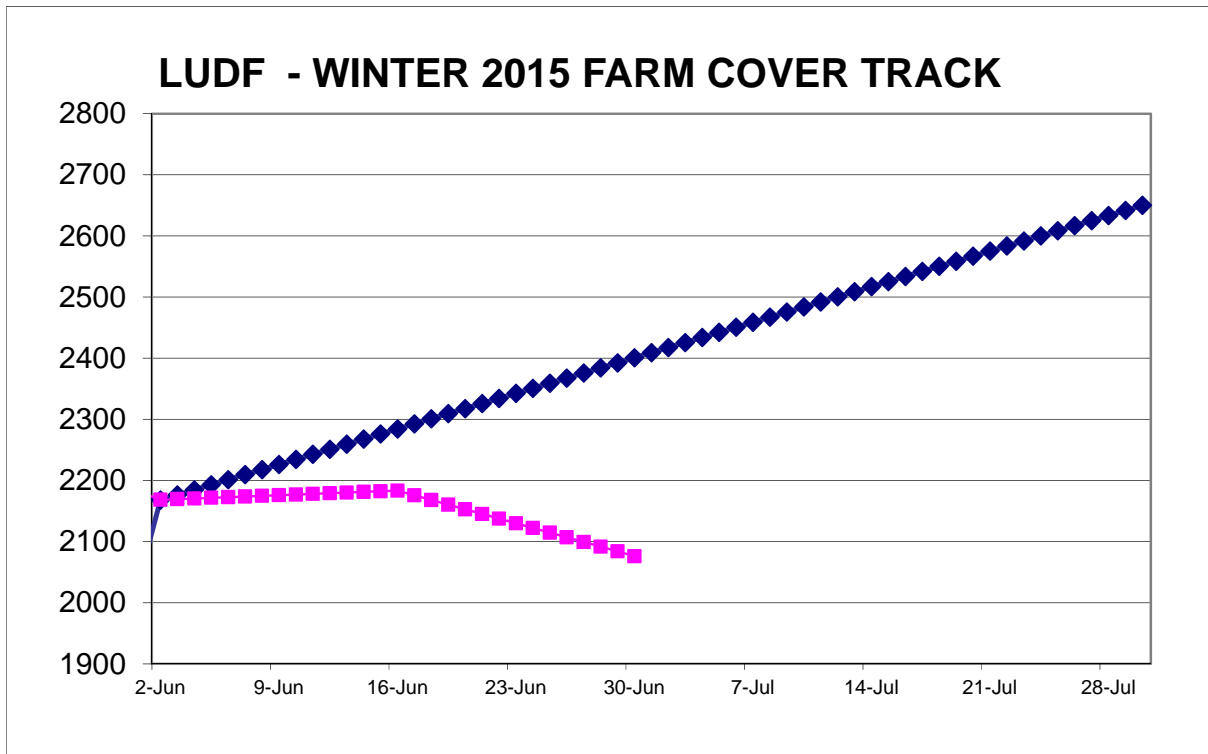
11. Area grazed this week was 1.82 Ha giving a 615 day round across 160 ha
12. The post-grazing residuals are now typically plating at about 1500 kgDM/ha.
13. Our current stocking rate is 0.15 cows/ha
14. Our demand line this week is not calculated based on current demand but according to the target average pasture cover tracker for winter. This targets an APC of 2401kgDM/ha at the 30th of June. Using this APC and target residual of 1550kgDM/ha allows the pregraze target to be calculated as follows. Pregraze

cover = (APC minus residual) x2 + residual or (2401 – 1550) x2 + 1550 = 3252 kgDM/ha. This provides a better understanding of where the farm is in terms of cover compared to where we had budgeted to be.

Figure 3: This week's feed wedge:



Figure 4: Autumn – Winter Target APC:



Feeding Management for the coming week

15. Estimated pasture growth over the last 2 weeks, based on the pasture cover as plated is 1 kgDM/ha/day, There has only been 6 paddocks that have had a positive growth over the last 2 weeks the other 15 paddocks have lost cover
16. Current demand for cows on farm is 1.8 kgDM/ha/day plus we need to accumulate 17.4 Kg DM /ha/day to allow APC to lift from current 2076 kgDM/ha to the target of 2650kgDM/ha by 30th July (31 days). This gives a total demand of 19.2kgDM grown per ha per day over the winter period.
17. The feed wedge estimates a feed deficit of about 50.5 tonnes (effectively the difference between target APC and current APC). To reach the target APC at calving, we therefore have to reduce demand on the farm.
18. Given the above, the management for the next 2 weeks will be:
 - a. The 24 cows will be staying on farm for another 4 days and then they will be removed. These will be offered 12 Kg DM cow a day. They will finish there current break in N1 and then move to S6 to eat a 0.8 ha break that was left when the other 80 cows were moved off farm due to wet ground conditions 2 weeks ago.
 - b. An average growth rate of 17.4kgDM/ha/day is therefore required for the next 31 days to achieve target cover at the start of calving.

Data sheet

LUDF Weekly report	31-May-15	9-Jun-15	16-Jun-15	23-Jun-15	30-Jun-15
Farm grazing ha (available to milkers)	160	160	160	160	160
Dry Cows on farm / East blk /Jackies/other	329/0/0/122	104/0/0/47 4	104/0/0/ 474	24/0/80/ 474	24/0/80 474
Culls (Includes culls put down & empties)	0	0	0	0	0
Culls total to date	137	0	0	0	0
Deaths (Includes cows put down)	0	0	0	0	0
Deaths total to date	7	0	0	0	0
Calved Cows available (Peak Number 560)	0	0	0	0	0
Treatment / Sick mob total	0	0	0	0	0
Mastitis clinical treatment	0	0	0	0	0
Mastitis clinical YTD (tgt below 64 yr end)	57	0	0	0	0
Bulk milk SCC (tgt Avg below 150)	0	0	0	0	0
Lame new cases	0	0	0	0	0
Lame ytd	165	0	0	0	0
Lame days YTD (Tgt below 1000 yr end)	1891	0	0	0	0
Other/Colostrum	0	0	0	0	0
Milking twice a day into vat	326	0	0	0	0
Milking once a day into vat	0	0	0	0	0
Small herd	0	0	0	0	0
Main Herd	326	0	0	0	0
MS/cow/day (Actual kg / Cows into vat only)	1.31	0.00	0.00	0.00	0.00
MS/cow to date (total kgs / Peak Cows	498	0	0	0	0
MS/ha/day (total kgs / ha used)	0.67	0.0	0.0	0.0	0.0
Herd Average Cond'n Score	4.55	0.00	0.00	0.00	0.00
Monitor group LW kg WOW early MA calvers	0	0	0	0	0
Soil Temp Avg Aquaflex	5.4	6.8	6.4	5.0	3.6
Growth Rate (kgDM/ha/day)	15	0	14	0	1
Plate meter height - ave half-cms	11.9	0.0	12.0	0.0	11.3
Ave Pasture Cover (x140 + 500)	2168	0	2183	0	2076
Surplus/[deficit] on feed wedge- tonnes	0	0	[14.7]	0	[50.5]
Pre Grazing cover (ave for week)	3182	2900	3000	3020	3050

Post Grazing cover (ave for week)	1550	1500	1500	1500	1500
Highest pregrazing cover	3200	2900	3000	3020	3050
Area grazed / day (ave for week)	1.76	1.14	1.06	0.09	0.26
Grazing Interval	91	140	151	1778	615
Milkers Offered/grazed kg DM pasture	0.0	0.0	0.0	0.0	0.0
Estimated intake pasture MJME	0	0	0	0	0
Milkers offered kg DM Grass silage	0	0	0	0	0
Silage MJME/cow offered	0	0	0	0	0
Estimated intake Silage MJME	0	0	0	0	0
Estimated total intake MJME	0	0	0	0	0
Target MJME Offered/eaten (includes 6% waste)	0	0	0	0	0
Pasture ME (pre grazing sample)	0.0	0.0	0.0	0.0	0.0
Pasture % Protein	0.0	0.0	0.0	0.0	0.0
Pasture % DM - Concern below 16%	0.0	0.0	0.0	0.0	0.0
Pasture % NDF Concern < 33	0.0	0.0	0.0	0.0	0.0
Mowed pre or post grazing YTD	251.8	0	0		
Total area mowed YTD	266.2	0	0		
Supplements fed to date kg per cow (560 peak)	341.9	0.0	0.0	0.0	0.0
Supplements Made Kg DM / ha cumulative	139.4	0	0	0	0
Units N applied/ha and % of farm	0	0	0	0	0
Kgs N to Date (whole farm)	143	0	0	0	0
Rainfall (mm)	0	21	8.9	39.8	9.4
Aquaflex topsoil rel. to fill point target 60 - 80%	60-80	60-80	60-80	100-100	90-100

Farm walks over the winter period will occur every 2nd Tuesday morning (30/6 and 14/7) then weekly. Farmers or their managers and staff are always welcome to walk with us. Please call to notify us of your intention and bring your plate meter and gumboots. Phone SIDDC – 03 423 0022.

Peter Hancox, Farm Manager, Natalia Benquet, Charlotte Westwood.

Lincoln University Dairy Farm - Farm Walk notes

Tuesday 16-June 2015

LUDF – focus for 2015/16 Season: Nil-Infrastructure, low input, low N-loss, high profit.
Farm system comprises 3.5 cows/ha (peak milked), 150kgN/ha, 300kgDM/cow imported supplement, plus winter most cows off farm. FWE of less than \$1.12million and Target production of 500kgMS/cow.

Critical issues for the short term

1. Monitor cows on winter pasture and silage to achieve required condition score at calving
2. Monitor average pasture cover on the milking platform
3. Use back fences
4. Observing cows for signs of mastitis

Key Numbers - week ending Tuesday 16 June 2015

Ave Past Cover	2183kgDM/ha	Past Growth Rate	14 kgDM/ha/day
Round length	151 days	Ave Supplement used	0 kgDM/cow/day
No Cows on farm	104	Ave Soil Temp (week)	6.4 degrees

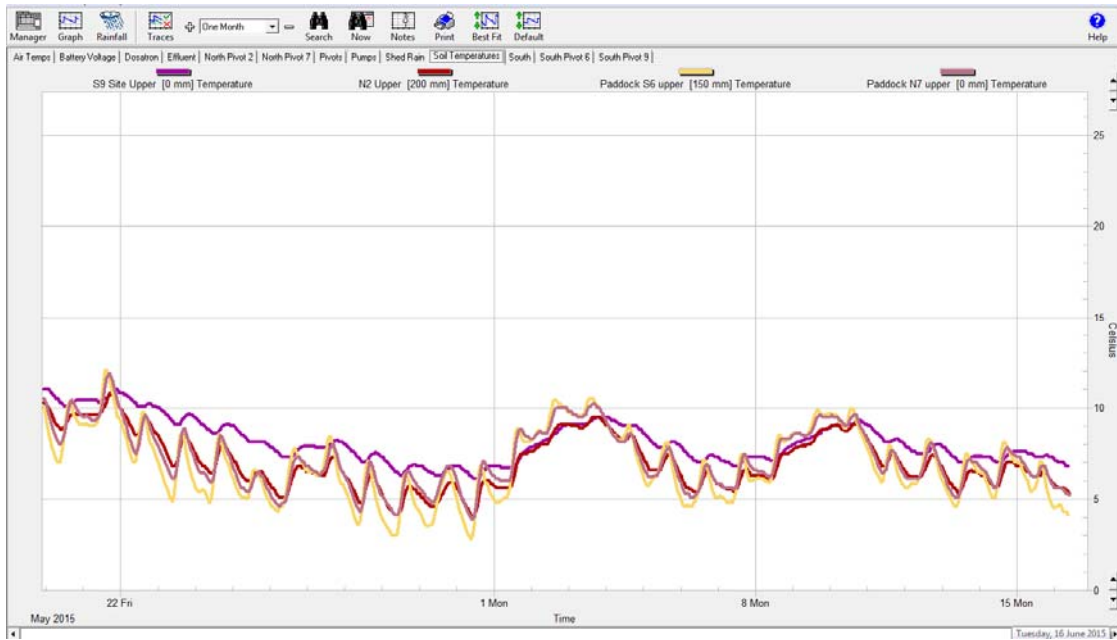
Herd Management

5. We are currently managing 104 dry cows on farm
6. 122 of our light early calving cows went to winter grazing on Saturday 30th May. They are offered 16 Kg DM per cow made up of 14 kgDM grass and 2kgDM of silage. Another 225 cows went to winter grazing on the 3rd of June and are offered 14 Kg DM made up of 12 kgDM of grass and 2kgDM of silage. These will be split into 2 mobs on calving date giving us the option of leaving one mob out grazing into August if required. This leaves 104 cows on farm made up of 82 fat cows already at condition score 5 and a group of 22 lame cows.
7. BCS done at the end of May. Average BCS came back as 4.55, increasing 0.14 of a condition score from 2 weeks before. 328 cows (72.8%) are either 4 or 4.5 BCS, giving a very narrow range. Of the remainder, 4 were below BCS 4 and 78 are BCS 5 or greater.

Growing Conditions

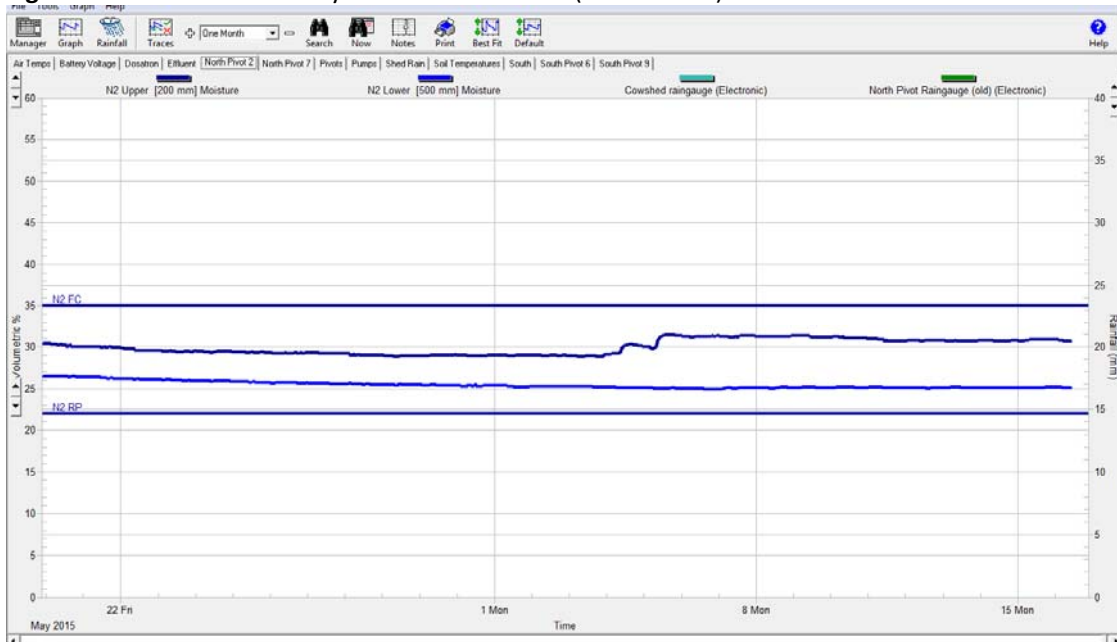
8. 9 am average soil temperature for the week was 6.4 degrees (.04 degrees lower than last week).

Figure 1: Soil temperature history for the last 4 weeks



9. We have had 29.8 mills of rain over the last 2 weeks.

Figure 2: Soil moisture history for the last 4 weeks (Paddock N2).



Pasture Management

10. Area grazed this week was 7.42 Ha giving a 151 day round across 160 ha
11. The post-grazing residuals are now typically plating at about 1500 kgDM/ha.
12. Our current stocking rate is 0.65 cows/ha
13. Our demand line this week is not calculated based on current demand but according to the target average pasture cover tracker for winter. This targets an APC of 2284kgDM/ha at the 16th of June. Using this APC and target residual of 1550kgDM/ha allows the pregraze target to be calculated as follows. Pregraze cover = (APC minus residual) x 2 + residual or $(2284 - 1550) \times 2 + 1550 = 3018$ kgDM/ha. This provides better understanding of where the farm is in terms of cover compared to where we had budgeted to be.

Figure 3: This week's feed wedge:

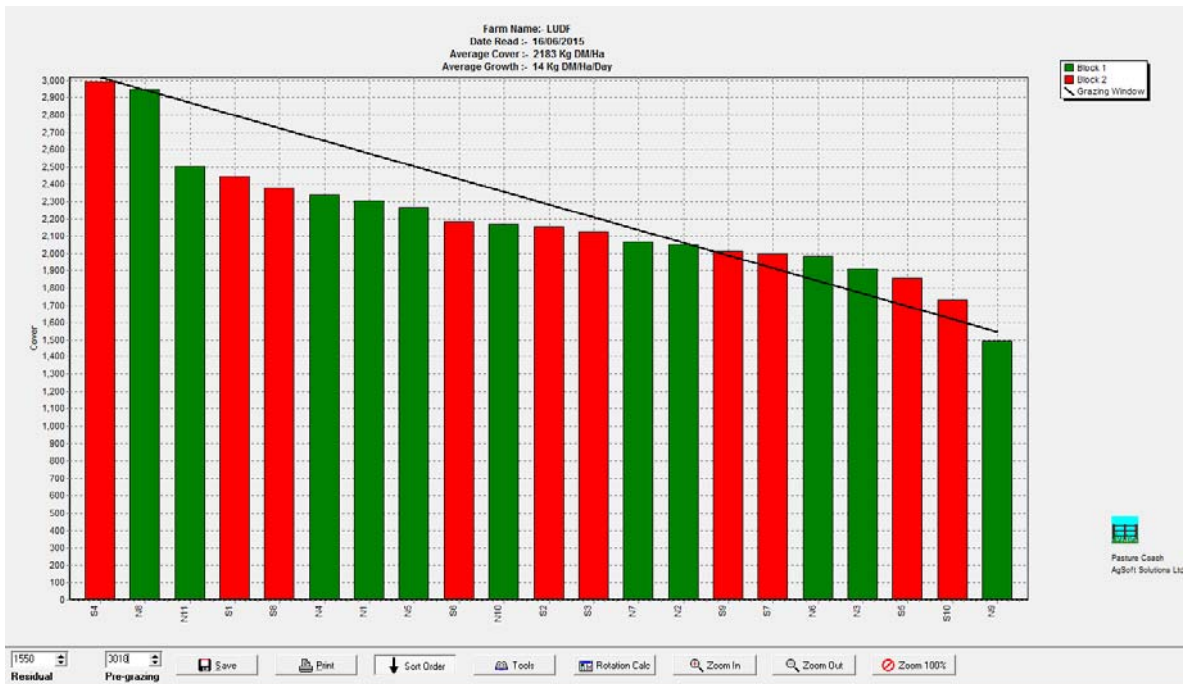
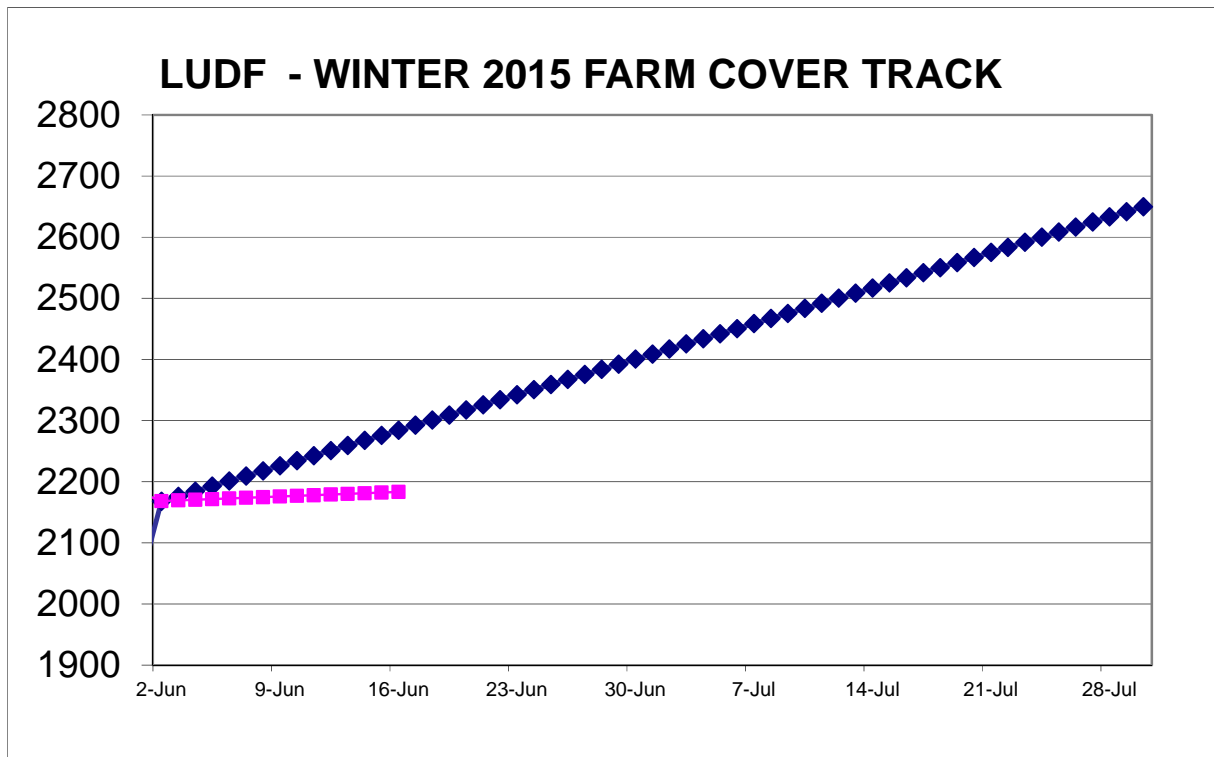


Figure 4: Autumn – Winter Target APC:



Feeding Management for the coming week

14. Estimated pasture growth this week, based on the pasture cover as plated is 14 kgDM/ha/day, however this appears to overstate the growth as APC has not substantially changed over the past fortnight.
15. Current demand for cows on farm is 7.8 kgDM/ha/day plus we need to accumulate 10.3 Kg DM /ha/day to allow APC to lift from current 2183 kgDM/ha to the target of 2650kgDM/ha by 30th July (45 days). This gives a total demand of 17.8kgDM grown per ha per day over the winter period.
16. The feed wedge estimates a feed deficit of about 14.7 tonnes (effectively the difference between target APC and current APC). To reach the target APC at calving, we therefore have to reduce demand on the farm.
17. Given the above, the management for the next 2 weeks will be:
 - a. The 82 fat cows on farm will finish grazing paddock S6 and will then be moved to the support block. They'll be on a diet of grass and silage (only maintenance as they have reached calving target BCS).
 - b. The 22 lame cows will be staying on farm. These will be offered 12 Kg DM cow a day. They will continue to graze the highest paddocks of the wedge.
 - c. This would allow us to drop demand to 1.65 kgDM/ha/day for feeding cows, leaving the remainder of the daily growth to build the feed supply on farm for the start of calving.
 - d. An average growth rate of 12kgDM/ha/day is therefore required for the next 45 days to achieve target cover at the start of calving.
18. At this stage we do not plan to feed silage to dry cows on the milking platform, although silage will be fed if they leave the milking platform.

Data sheet

LUDF Weekly report	19-May-15	26-May-15	31-May-15	9-Jun-15	16-Jun-15
Farm grazing ha (available to milkers)	160	160	160	160	160
Dry Cows on farm / East blk /Jackies/other	0/51/0	126/0/0	329/0/0/1 22	104/0/0/4 74	104/0/0/4 74
Culls (Includes culls put down & empties)	35	5	0	0	0
Culls total to date	132	137	137	0	0
Deaths (Includes cows put down)	0	0	0	0	0
Deaths total to date	7	7	7	0	0
Calved Cows available (Peak Number 560)	402	326	0	0	0
Treatment / Sick mob total	0	0	0	0	0
Mastitis clinical treatment	0	0	0	0	0
Mastitis clinical YTD (tgt below 64 yr end)	57	57	57	0	0
Bulk milk SCC (tgt Avg below 150)	158	171	0	0	0
Lame new cases	8	6	0	0	0
Lame ytd	159	165	165	0	0
Lame days YTD (Tgt below 1000 yr end)	1856	1891	1891	0	0
Other/Colostrum	0	0	0	0	0
Milking twice a day into vat	387	321	326	0	0
Milking once a day into vat	15	5	0	0	0
Small herd	0	0	0	0	0
Main Herd	387	321	326	0	0
MS/cow/day (Actual kg / Cows into vat only)	1.55	1.54	1.31	0.00	0.00
MS/cow to date (total kgs / Peak Cows)	488	496	498	0	0
MS/ha/day (total kgs / ha used)	3.91	3.34	0.67	0.0	0.0
Herd Average Cond'n Score	4.41	0.00	4.55	0.00	0.00

Monitor group LW kg WOW early MA calvers	515	517	0	0	0
Soil Temp Avg Aquaflex	10.0	7.0	5.4	6.8	6.4
Growth Rate (kgDM/ha/day)	52	17	15	0	14
Plate meter height - ave half-cms	14.7	12.5	11.9	0.0	12.0
Ave Pasture Cover (x140 + 500)	2553	2244	2168	0	2183
Surplus/[deficit] on feed wedge- tonnes		21	0	0	[14.7]
Pre Grazing cover (ave for week)	3549	3416	3182	2900	3000
Post Grazing cover (ave for week)	1650	1650	1550	1500	1500
Highest pregrazing cover	3636	3578	3200	2900	3000
Area grazed / day (ave for week)	4.30	5.13	1.76	1.14	1.06
Grazing Interval	37	31	91	140	151
Milkers Offered/grazed kg DM pasture	18.0	18.0	0.0	0.0	0.0
Estimated intake pasture MJME	218	218	0	0	0
Milkers offered kg DM Grass silage	0	0	0	0	0
Silage MJME/cow offered	12	12	0	0	0
Estimated intake Silage MJME	0	0	0	0	0
Estimated total intake MJME	218	218	0	0	0
Target MJME Offered/eaten (includes 6% waste)	0	0	0	0	0
Pasture ME (pre grazing sample)	12.2	12.2	0.0	0.0	0.0
Pasture % Protein	23.7	21.9	0.0	0.0	0.0
Pasture % DM - Concern below 16%	15.6	15.8	0.0	0.0	0.0
Pasture % NDF Concern < 33	37.1	35.3	0.0	0.0	0.0
Mowed pre or post grazing YTD	251.8	251.8	251.8	0	0
Total area mowed YTD	266.2	266.2	266.2	0	0
Supplements fed to date kg per cow (560 peak)	341.9	341.9	341.9	0.0	0.0
Supplements Made Kg DM / ha cumulative	139.4	139.4	139.4	0	0
Units N applied/ha and % of farm	0	0	0	0	0
Kgs N to Date (whole farm)	143	143	143	0	0
Rainfall (mm)	4.2	2.2	0	21	8.9
Aquaflex topsoil rel. to fill point target 60 - 80%	60-80	60-80	60-80	60-80	60-80

Farm walks over the winter period will occur every 2nd Tuesday morning (30/6 and 14/7) then weekly. Farmers or their managers and staff are always welcome to walk with us. Please call to notify us of your intention and bring your plate meter and gumboots. Phone SIDDC – 03 423 0022.

Peter Hancox, Farm Manager, Natalia Benquet, Charlotte Westwood.

Event: Innovate or Stagnate – Doug Avery

Thursday 16th July 2015, 7pm. Free to attend

Doug Avery and invited guests will talk about their hard won experience down on the farm. Doug will relate how he managed to turn desperation, after seven years of Marlborough drought, into a rural success story. Register here [Doug's website](#)

S1 Lecture Theatre, Stewart Building, Lincoln Campus



Lincoln University Dairy Farm - Farm Walk notes

Tuesday 02-June 2015

LUDF – focus for 2015/16 Season: Nil-Infrastructure, low input, low N-loss, high profit.
Farm system comprises 3.5 cows/ha (peak milked), 150kgN/ha, 300kgDM/cow imported supplement, plus winter most cows off farm. FWE of less than \$1.12million and Target production of 500kgMS/cow.

Critical issues for the short term

1. Monitor cows on winter pasture and silage to achieve required condition score at calving
2. Monitor average pasture cover on the milking platform
3. Observing cows for signs of mastitis

Key Numbers - week ending Tuesday 2 June 2015

Ave Past Cover	2168gDM/ha	Past Growth Rate	15 kgDM/ha/day
Ave Milk Production	1.31 kgMS/cow*	(Ave) No Cows In Milk	326
Round length	91 days	Ave Supplement used	0 kgDM/cow/day
SCC	Not available	Ave Soil Temp (week)	5.4 degrees

(* milk to factory from current cows milking; all cows dried off 28th May 2015)

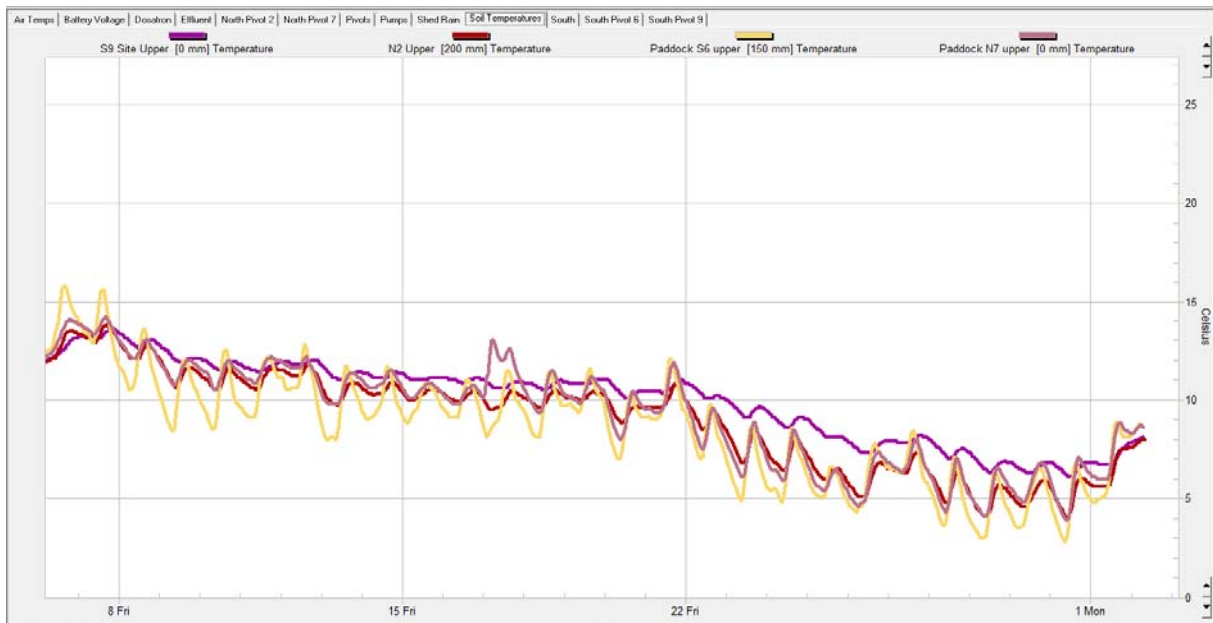
Herd Management

4. We are currently managing 329 dry cows on farm
5. All cows were dried off last Thursday 28th May - all cows received dry cow and teat seal. Dry cow therapy decisions were made following the SAMM plan approach to allocation of dry cow type.
6. 122 of our light early calving cows went to winter grazing on Saturday 30th May. They will be offered 16 Kg DM per cow made up of 14 kgDM grass and 2kgDM of silage. Another 225 cows will go to winter grazing tomorrow these will be offered 14 Kg DM made up of 12 KgDM of grass and 2kgDM of silage. These will be split into 2 mobs on calving date giving us the option of leaving one mob out grazing into August if required. This will leave us with 104 cows on farm made up of 82 fat cows already at condition score 5 and a group of 22 lame cows.
7. BCS done last week. Average BCS came back as 4.55, increasing 0.14 of a condition score from 2 weeks before. 328 cows (72.8%) are either 4 or 4.5 BCS, giving a very narrow range. Of the remainder, 4 were below BCS 4 and 78 are BCS 5 or greater.

Growing Conditions

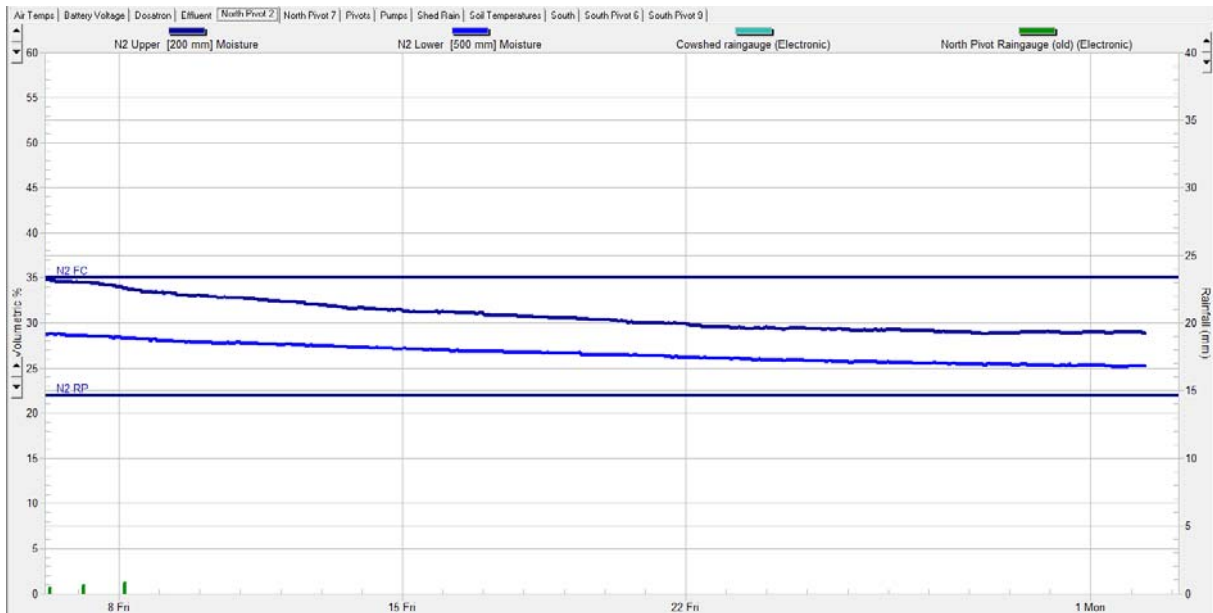
8. 9 am average soil temperature for the week was 5.4 degrees (1.6 degrees lower than last week).

Figure 1: Soil temperature history for the last 4 weeks



9. We have had no rain this week.

Figure 2: Soil moisture history for the last 4 weeks (Paddock N2).



Pasture Management

10. Area grazed this week was 12.34 Ha giving a 91 day round across 160 ha
11. The post-grazing residuals are now typically plating at about 1550 kgDM/ha.
12. Our current stocking rate is 2.06 cows/ha this will reduce tomorrow to 0.65 cows /Ha
13. Calculating demand at this time of season is quite complicated as stock is leaving the platform and requirements are constantly dropping as cows get dried off.
14. Our demand line this week is not calculated based on current demand but according to the target average pasture cover tracker for winter. This targets an APC of 2168kgDM/ha at the beginning of June. Using this APC and target residual of 1550kgDM/ha allows the pregraze target to be calculated as follows.
 Pregraze cover = (APC minus residual) x 2 + residual or $(2168 - 1550) \times 2 + 1550 = 2786$ kgDM/ha. This

provides better understanding of where the farm is as in terms of cover compared to where we had budgeted to be.

Figure 3: This week's feed wedge:

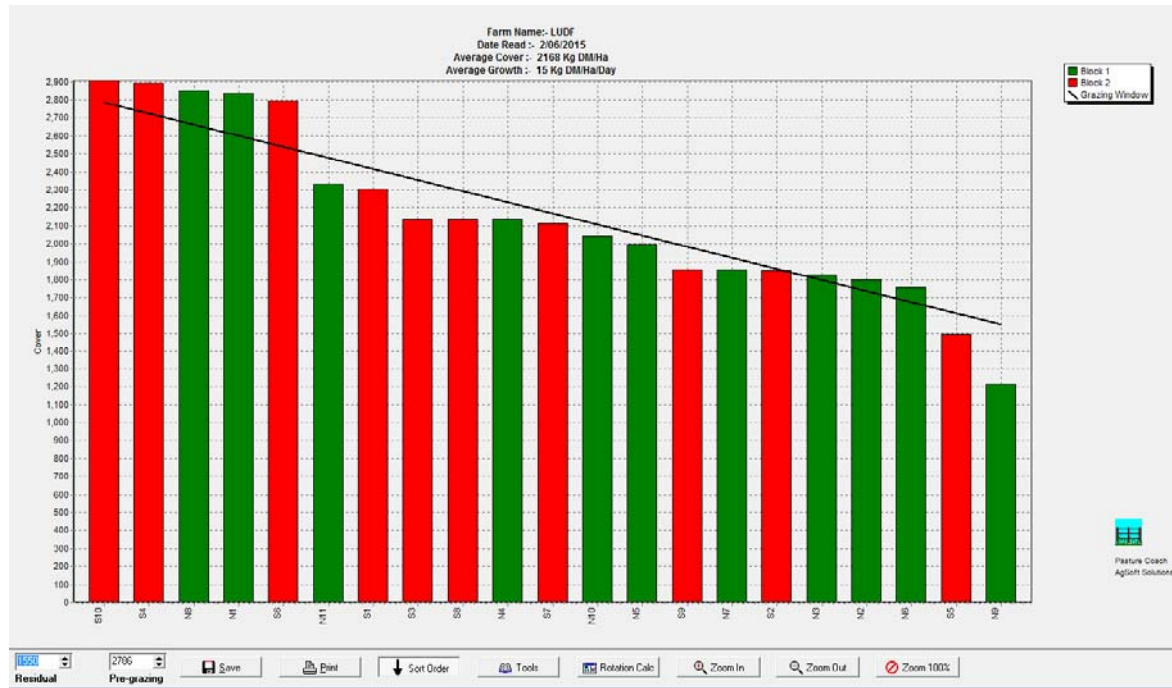
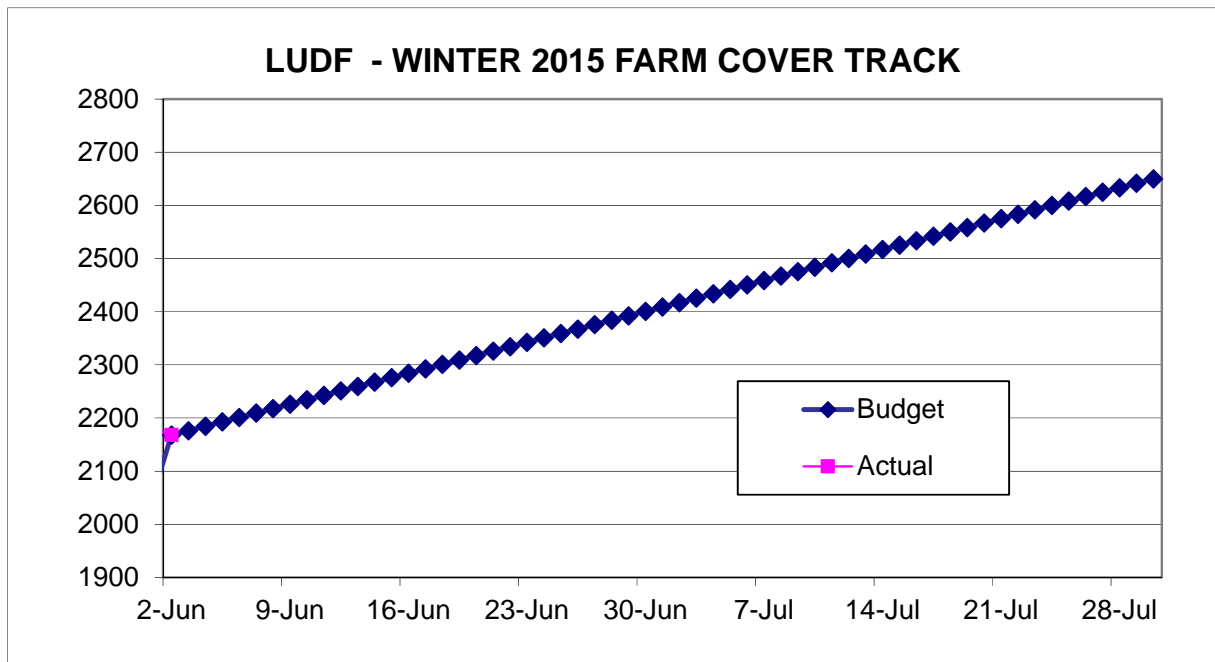


Figure 4: Autumn – Winter Target APC:



Feeding Management for the coming week

- 15. Estimated pasture growth this week, based on the pasture cover as plated is 15 kgDM/ha/day.
- 16. We will be managing our group of 82 fat cows on farm and 24 lame cows .These will be offered 12 Kg DM cow a day. We will use these to eat out our 3 highest cover paddocks. We're targeting to eat out our

paddocks that contain the more winter active cultivars of ryegrass so covers don't get too high on these paddocks.

17. Demand for cows on farm once dried off cows leave the farm is 7.8 Kg DM per Ha per day plus we need to accumulate 8.31 Kg DM per ha a day (to allow APC to lift from current 2168 to a target of 2650kgDM/ha by 30th July) giving a total demand of 16.1kgDM grown per ha per day over the winter period. If fortnightly farm walks identify that we are not reaching this target, we have the option of removing the 82 fat cows to our run off. At this stage we do not plan to feed silage to dry cows on the milking platform, although silage will be fed if they leave the milking platform.
18. The clover in the pasture have started to wilt with the sudden drop in temperature. It is, though, fairly unusual to even have clover in the sward at this time of year.

Data sheet

LUDF Weekly report	5-May-15	12-May-15	19-May-15	26-May-15	31-May-15
Farm grazing ha (available to milkers)	160	160	160	160	160
Dry Cows on farm / East blk /Jackies/other	0/2/0	0/39/0	0/51/0	126/0/0	329/0/0/122
Culls (Includes culls put down & empties)	0	0	35	5	0
Culls total to date	97	97	132	137	137
Deaths (Includes cows put down)	0	0	0	0	0
Deaths total to date	7	7	7	7	7
Calved Cows available (Peak Number 560)	468	433	402	326	0
Treatment / Sick mob total	0	0	0	0	0
Mastitis clinical treatment	0	0	0	0	0
Mastitis clinical YTD (tgt below 64 yr end)	57	57	57	57	57
Bulk milk SCC (tgt Avg below 150)	139	138	158	171	0
Lame new cases	8	6	8	6	0
Lame ytd	145	151	159	165	165
Lame days YTD (Tgt below 1000 yr end)	1639	1716	1856	1891	1891
Other/Colostrum	0	0	0	0	0
Milking twice a day into vat	450	422	387	321	326
Milking once a day into vat	18	11	15	5	0
Small herd	0	0	0	0	0
Main Herd	450	422	387	321	326
MS/cow/day (Actual kg / Cows into vat only)	1.56	1.52	1.55	1.54	1.31
MS/cow to date (total kgs / Peak Cows)	472	482	488	496	498
MS/ha/day (total kgs / ha used)	3.41	4.12	3.91	3.34	0.67
Herd Average Cond'n Score	4.36	0.00	4.41	0.00	4.55
Monitor group LW kg WOW early MA calvers	514	517	515	517	0
Soil Temp Avg Aquaflex	10.3	11.4	10.0	7.0	5.4
Growth Rate (kgDM/ha/day)	36	50	52	17	15
Plate meter height - ave half-cms	15.2	15.0	14.7	12.5	11.9
Ave Pasture Cover (x140 + 500)	2630	2593	2553	2244	2168
Surplus/[deficit] on feed wedge- tonnes				21	0
Pre Grazing cover (ave for week)	3773	3606	3549	3416	3182
Post Grazing cover (ave for week)	1700	1650	1650	1650	1550
Highest pregrazing cover	3930	3836	3636	3578	3200
Area grazed / day (ave for week)	3.77	4.27	4.30	5.13	1.76
Grazing Interval	42	37	37	31	91
Milkers Offered/grazed kg DM pasture	13.0	14.5	18.0	18.0	0.0

Estimated intake pasture MJME	157	175	218	218	0
Milkers offered kg DM Grass silage	5	4	0	0	0
Silage MJME/cow offered	12	12	12	12	0
Estimated intake Silage MJME	59	41	0	0	0
Estimated total intake MJME	216	216	218	218	0
Target MJME Offered/eaten (includes 6% waste)	0	0	0	0	0
Pasture ME (pre grazing sample)	11.9	12.3	12.2	12.2	0.0
Pasture % Protein	18.5	23.9	23.7	21.9	0.0
Pasture % DM - Concern below 16%	14	15.9	15.6	15.8	0.0
Pasture % NDF Concern < 33	38	39.0	37.1	35.3	0.0
Mowed pre or post grazing YTD	251.8	251.8	251.8	251.8	251.8
Total area mowed YTD	266.2	266.2	266.2	266.2	266.2
Supplements fed to date kg per cow (560 peak)	323.0	341.9	341.9	341.9	341.9
Supplements Made Kg DM / ha cumulative	139.4	139.4	139.4	139.4	139.4
Units N applied/ha and % of farm	0	0	0	0	0
Kgs N to Date (whole farm)	143	143	143	143	143
Rainfall (mm)	4.2	0	4.2	2.2	0
Aquaflex topsoil rel. to fill point target 60 - 80%	70-90	70-90	60-80	60-80	60-80

Farm walks over the winter period will occur every 2nd Tuesday morning (2/6 -16/6- 30/6 14/7) then weekly. Farmers or their managers and staff are always welcome to walk with us. Please call to notify us of your intention and bring your plate meter and gumboots. Phone SIDDC – 03 423 0022.

Peter Hancox, Farm Manager, Natalia Benquet, Charlotte Westwood.