

Westland Monitor Farm Project

Weekly Update 24 November 2017

CO comment

Pasture silage is an important source of supplementary feed on New Zealand dairy farms. The better the silage quality, the higher the milksolids (MS) production and body condition score (BCS) gain in cows. It is impossible to produce high quality silage from low quality pasture, no matter how good the fermentation is. Both the quality of the ensiled pasture and the quality of the fermentation must be considered.

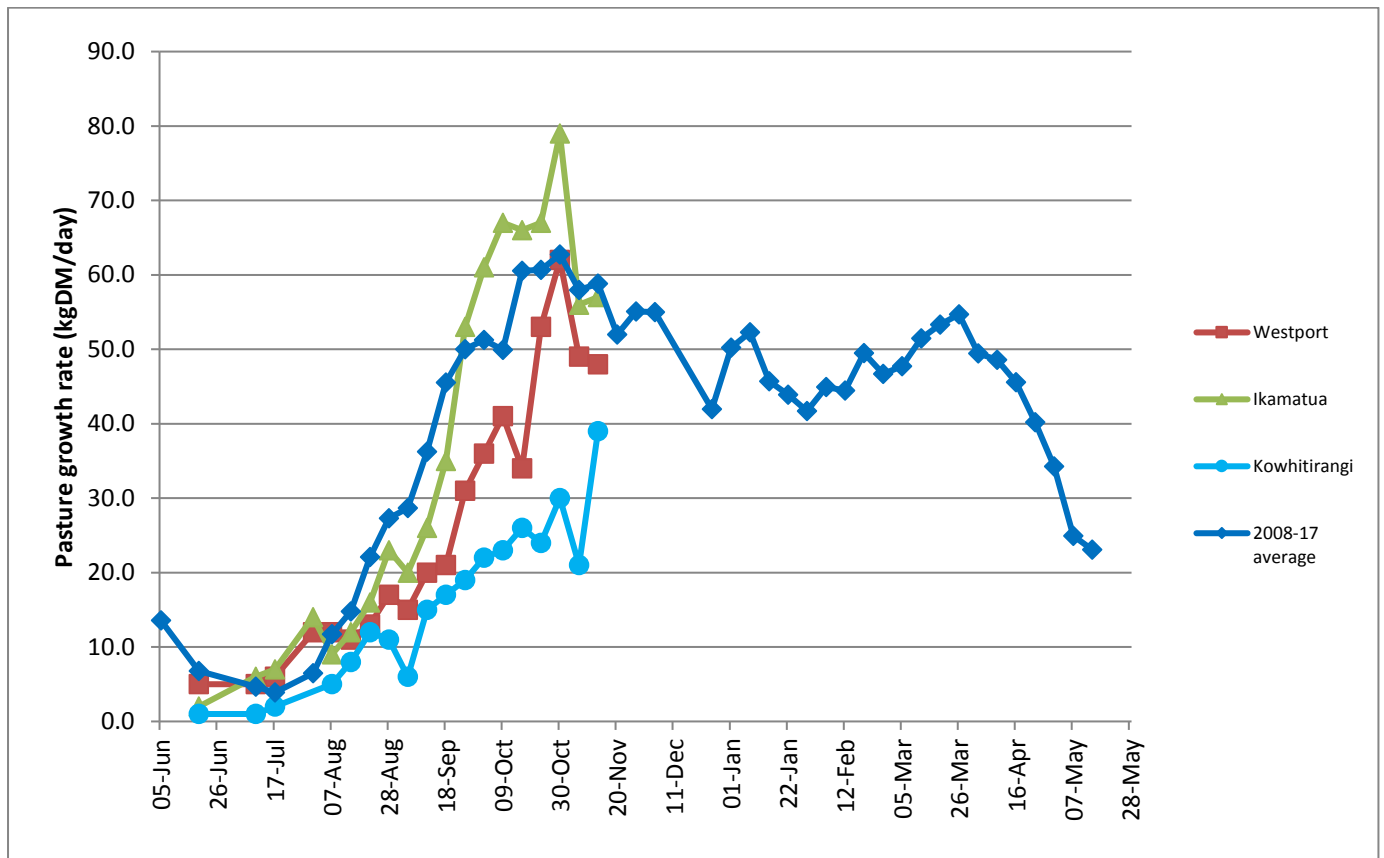
- Cut in the morning of a sunny day, for rapid wilting. Cutting after 1-2 days' sunny weather will result in good sugar levels in the pasture, even when cut in the morning.
- Avoid wilting for any more than 24 hours.
- A fast wilt will leave good sugar concentrations in the pasture.
- Fast sealing will keep out oxygen, making conditions more suitable for bacteria to convert sugars into lactic acid.
- Fast production of lactic acid will quickly reduce the pH, to prevent protein losses.

Farm Summary

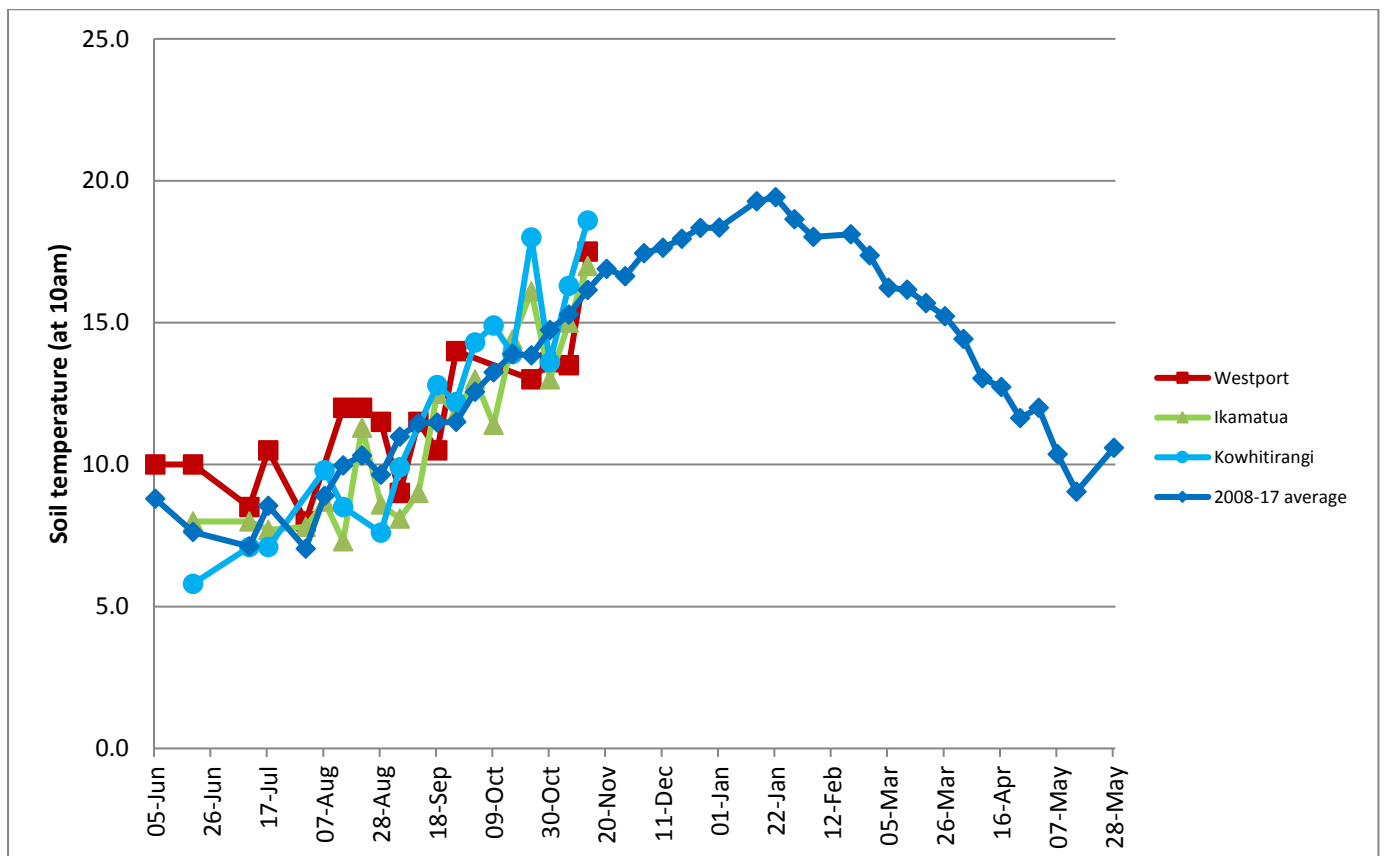
	Westport	Ikamatua	Kowhitirangi
Average cover (kg DM/ha)	2130	2024	1854
APC (16 November)	2096	2019	1888
Rotation length (days)	18	20	26
Stocking rate	2.9	2.7	2.4
Percentage in milk	100	100	100
Milksolids kg/cow	1.99	2.15	
Milksolids kg/ha	5.7	5.8	
MS/cow (season to date)	130	173	
MS/ha (season to date)	382	468	
N (kg/ha) year to date	68	87	
Current N application rate kg N/ha	15	20	
	30 Oct	31 Oct	1 Nov
DM%	13.5	16.2	15.6
Pasture ME	11.8	12.6	12.1
Pasture NDF	6.4	10.6	11.2
Pasture CP	26.9	26.8	21.0
Target Intake (kg DM/cow/d)	18	20	18
Supplement (kg/cow/day)	1.5	4.0	
Soil temperature (°C)	17.5	17	18.6
Growth Rate (kg DM/day)	48	57	39
Rainfall	0	6	
Conditions for farmwalk	Very hot day; Farm getting dry; No sign of rain	Very hot; Farm drying off; Irrigators going	Very hot; Farm drying out; No sign of rain
Comments			

NB: pasture quality data are for 1 sample collected from each farm

Weekly Pasture Growth Rates

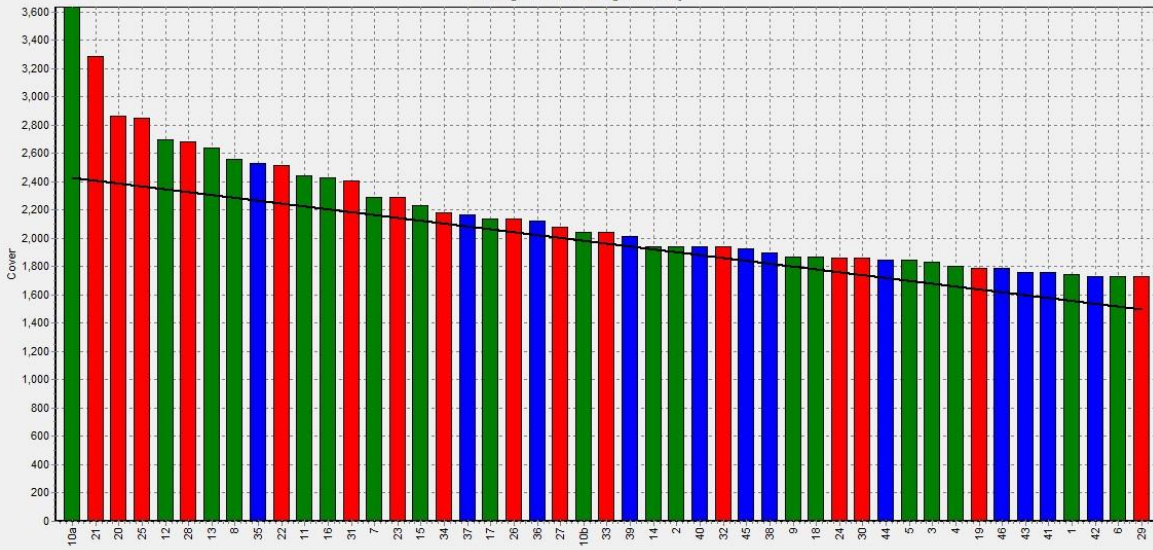


Weekly Soil Temperature



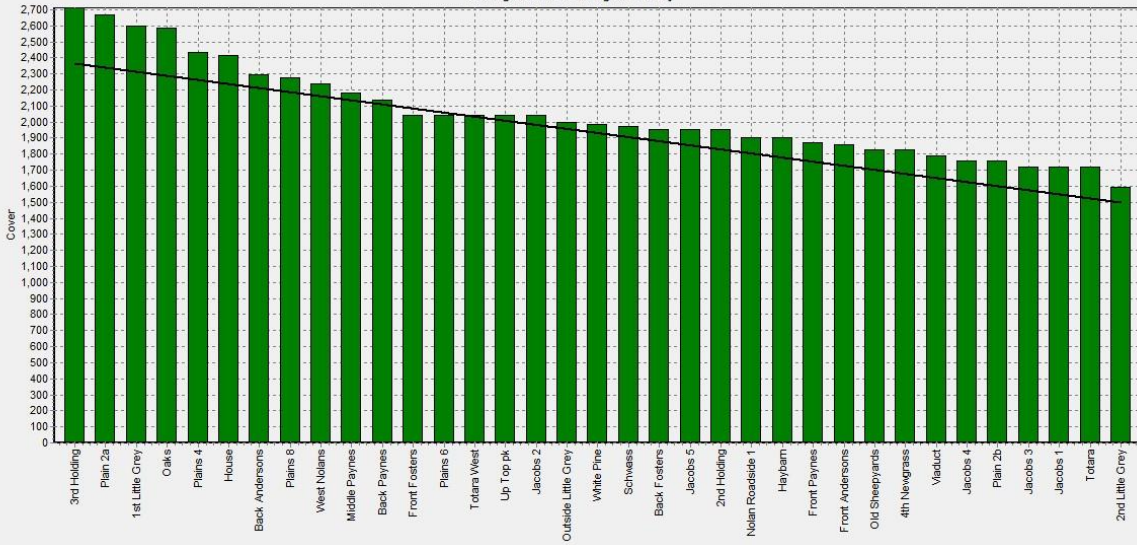
Westport

Farm Name: ADRIAN & CHERYL GALLAGHER
 Date Read : 20/11/2017
 Average Cover : 2130 Kg DM/Ha
 Average Growth : 48 Kg DM/Ha/Day



Ikamatua

Farm Name: ANDREW_NIKI_MIRFIN
 Date Read : 21/11/2017
 Average Cover : 2024 Kg DM/Ha
 Average Growth : 57 Kg DM/Ha/Day



Kowhitirangi

