

Westland Monitor Farm Project

Weekly Update as at week ending Wednesday 28th March 2018

CO comment

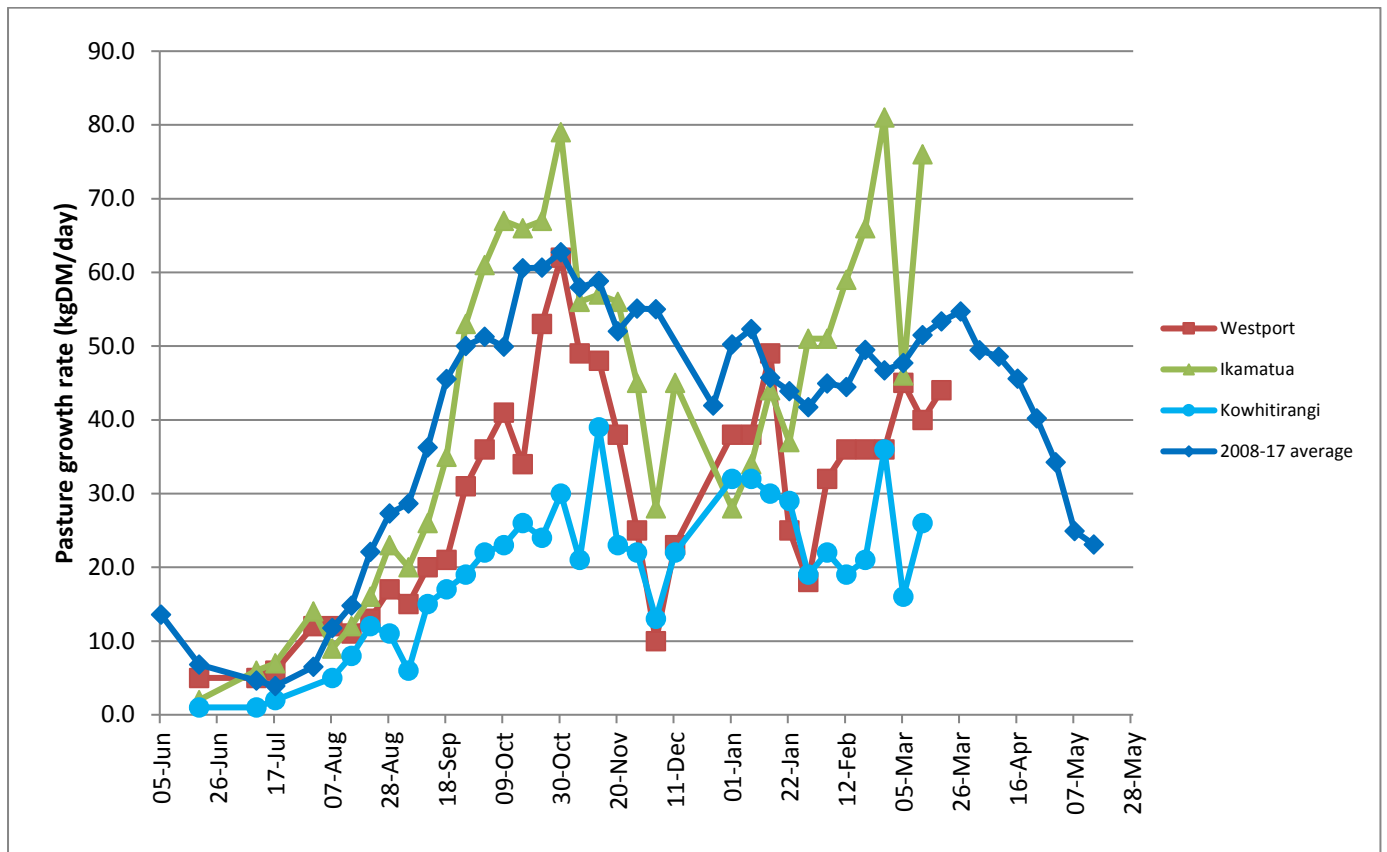
Growth rates will slow and are a reason for careful planning of lactation days during April and May is low average body condition score (BCS). It's difficult to increase BCS while cows are still milking. In comparison, BCS increases more rapidly when cows are offered sufficient feed after they have been dried off. There is a strong link between calving at target BCS and reproductive performance of herds. If you are seeking improvement in reproductive performance of your herd, improving BCS for at least part of your herd is one starting point. Farms with completed feed budgets will already know the amount of feed available for milk production during April and May, compared with the amount of feed required for BCS gain. Feed budget tools can be found at <http://www.dairynz.co.nz/feed/pasture-management/assessing-farm-performance/feed-budgets/> Recent DairyNZ research has highlighted that different feeds are used with different efficiencies for BCS gain. Details of this information can be found in the DairyNZ body condition scoring reference guide <http://www.dairynz.co.nz/page/pageid/2145864561?resourceId=703>

Farm Summary

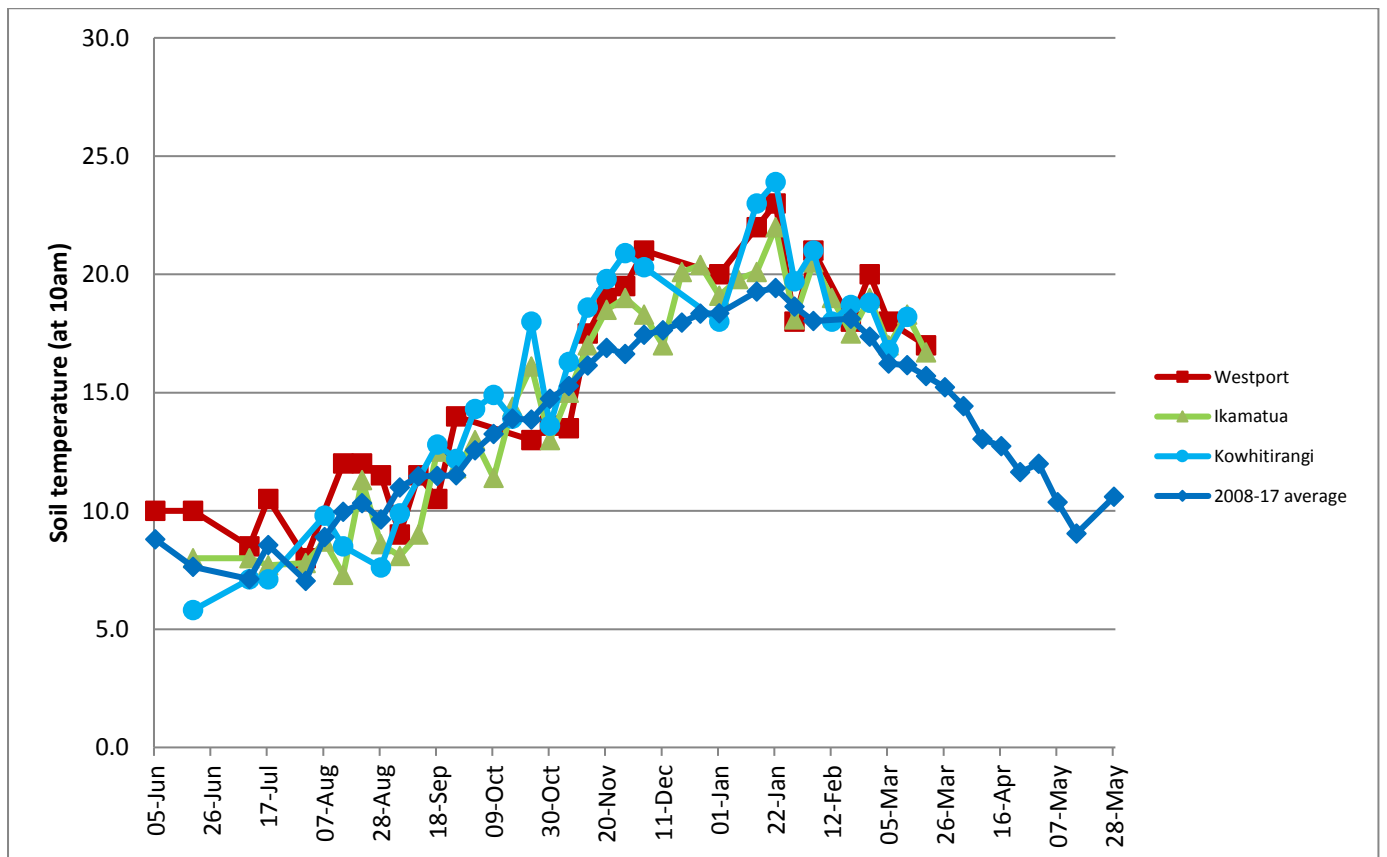
	Westport	Ikamatua	Kowhitirangi
Average cover (kg DM/ha)	2065	2085	2010
APC	2026	2097	1935
Rotation length (days)	20	22	
Stocking rate	2.9	2.7	2.4
Percentage in milk	100	97	100
Milksolids kg/cow	1.26	1.54	
Milksolids kg/ha	3.2	4.0	
MS/cow (season to date)	330	404	
MS/ha (season to date)	966	1087	
N (kg/ha) year to date	154	156	
Current N application rate kg N/ha	20	30	
	5 March	6 March	7 March
DM%	10.6	11.2	13.7
Pasture ME	12.4	>12.7	>12.7
Pasture NDF	48.5	49.5	46.8
Pasture CP	29.3	33.8	31.7
Target Intake (kg DM/cow/d)	18	18	
Supplement (kg/cow/day)	2	2.5	
Soil temperature (°C)	17	16.7	16.6
Growth Rate (kg DM/day)	46		36
Rainfall	101	46	
Conditions for farmwalk			
Comments			

NB: pasture quality data are for 1 sample collected from each farm

Weekly Pasture Growth Rates

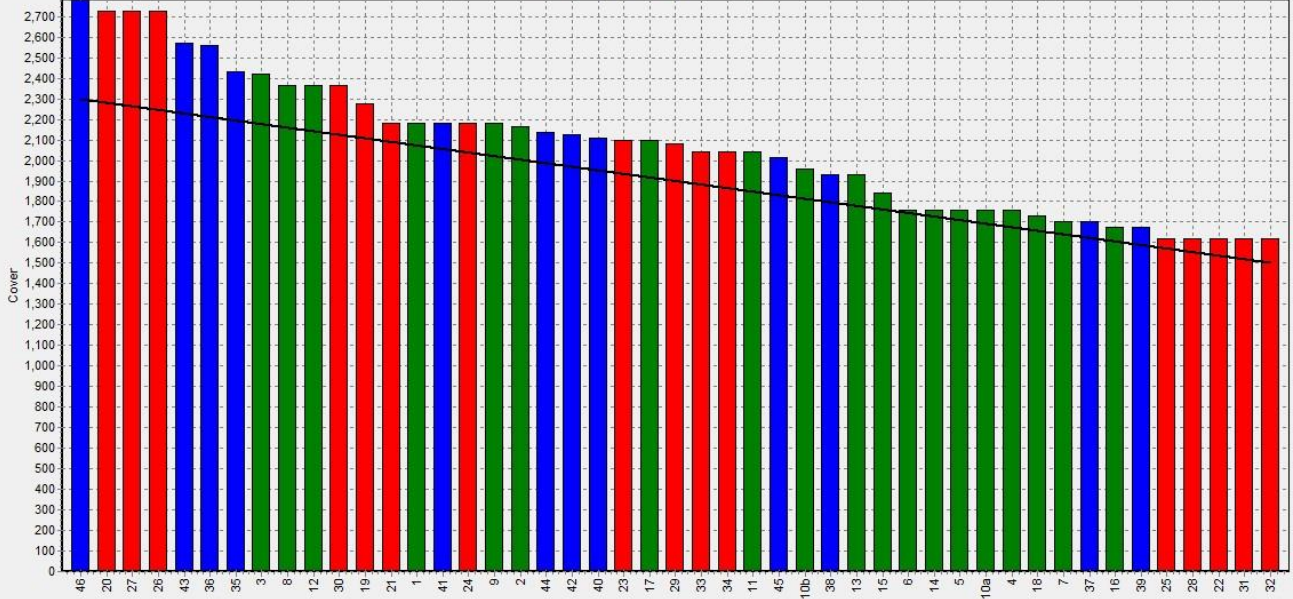


Weekly Soil Temperature



Westport

Farm Name:- ADRIAN & CHERYL GALLAGHER
Date Read :- 26/03/2018
Average Cover :- 2065 Kg DM/Ha
Average Growth :- 44 Kg DM/Ha/Day



1500

2300

Residual

Pre-grazing



Save



Print



Sort Order



Tools



Rotation Calc



Zoom In



Zoom Out



Zoom 100%

Ikamatua

Kowhitirangi

Ikamatua

Description	Date	RPM	% DM	% Prot	% Lipid	% ADF	% NDF	Sol Sugar	OMD %	MJME/kg
Haybarn	06/06/2017	14.8	16.3	29	5.4	19.6	37.4	12.7	>85	12.7
Totara east	03/08/2017	10.3	15.7	26.9	5.1	20.2	35.8	16.7	>85	>12.7
Totara west	03/08/2017	10.9	17.4	24.4	5.1	20.8	37.2	19.9	>85	>12.7
Plain 5	03/08/2017	12.2	17.3	24.5	4.7	20.5	41.4	16.7	>85	>12.7
Viaduct	03/08/2017	13.6	16.4	22.8	4.6	21.8	37.9	21.3	>85	>12.7
Mid-Payne	03/08/2017	15.8	16.7	22.2	4.7	23.7	41	16.1	80.8	11.8
Jacobs 2	03/08/2017	10.3	16.7	27	5.5	21.1	38	13.6	>85	12.5
Front Payne	05/09/2017	8.8	15.7	25	5	26.4	41	8.6	81.1	11.8
Schwass	04/10/2017	16.4	13	29	5	21.4	44.5	10.2	90.3	>12.7
Jacobs 2	31/10/2017	16.6	16.2	26.8	10	39.7	10.6			12.6
Back Foster	05/12/2017	15.9	17.7	28.8	4.8	22.9	46.7	11.6	87.1	12.7
Old sheep yards	16/1/2018	13.0	13.2	30.1	4.5	25.6	52.7	3.1	82.4	12.0
Jacobs 4	6/2/2018	10.8	15.4	27.7	4.8	25.8	45.9	8.7	79.4	11.6
Pine	6/3/2018	14.8	11.2	33.8	3.8	23.8	49.5	4.6	90.8	>12.7

Kowhitirangi

Description	Date	RPM	% DM	% Prot	% Lipid	% ADF	% NDF	Sol Sugar	OMD %	MJME/kg
6	7/6/2017	10.1	15	24.2	5	18.8	34.9	18.8	>85	>12.7
10	3/8/2017	10.7	17.6	21.0	4.7	25.2	44.8	15.4	80.9	11.6
21	6/9/2017	10.6	15.4	23.6	3.8	22.8	42.4	14.3	89.1	>12.7
4	5/10/2017	9.9	13.8	21.5	4.4	21.3	37.9	16.1	89.0	>12.7
2	1/11/2017	10.4	15.6	21.0	9.5	41.6	11.2			12.1
33	6/12/2017	12.3	19.1	24.6	4.2	24.3	55.1	9.2	84.9	12.4
27	17/1/2018	14.3	12.0	27.5	3.9	25.4	53.8	4.3	84.2	12.3
16	7/2/2018	13.9	14.6	24.1	3.4	25.9	47.8	6.2	81.4	11.9
52	7/3/2018	12.7	13.7	31.7	4.4	23	46.8	5.2	89.9	>12.7