

Westland Monitor Farm Project

Weekly Update as at week ending Wednesday 7th March 2018

CO comment

March 1st is often referred to as the start of the next production year. While the current conditions remain favourable, the need for planning and monitoring relating to targets for the next production season has started.

Some of the risks to look out for:

- Sudden changes in pasture cover when temperatures cool as the pasture growth from summer grass declines.
- Milking some cows for too long. Early calving cows with low body condition score (< score 4) are starting to run out of time to recover condition back to score 5 by calving.
- Facial eczema. Keep preventative measures going.

To aid in making decisions to ensure this season complements the next, use the Autumn Management Tool to identify options for achieving average pasture cover and cow body condition targets.

Feed supply and demand should be matched for the autumn and winter so target cow condition can be achieved for the spring and the new lactation.

The Autumn Management Tool tests options on whether to dry-off, buy supplementary feed, cull or alter milking frequency.

It will help to:

- Identify the profitability of the various options, while achieving body condition score (BCS) and average pasture cover targets
- Set appropriate dry-off rules, ensuring there is enough time and feed to meet BCS targets

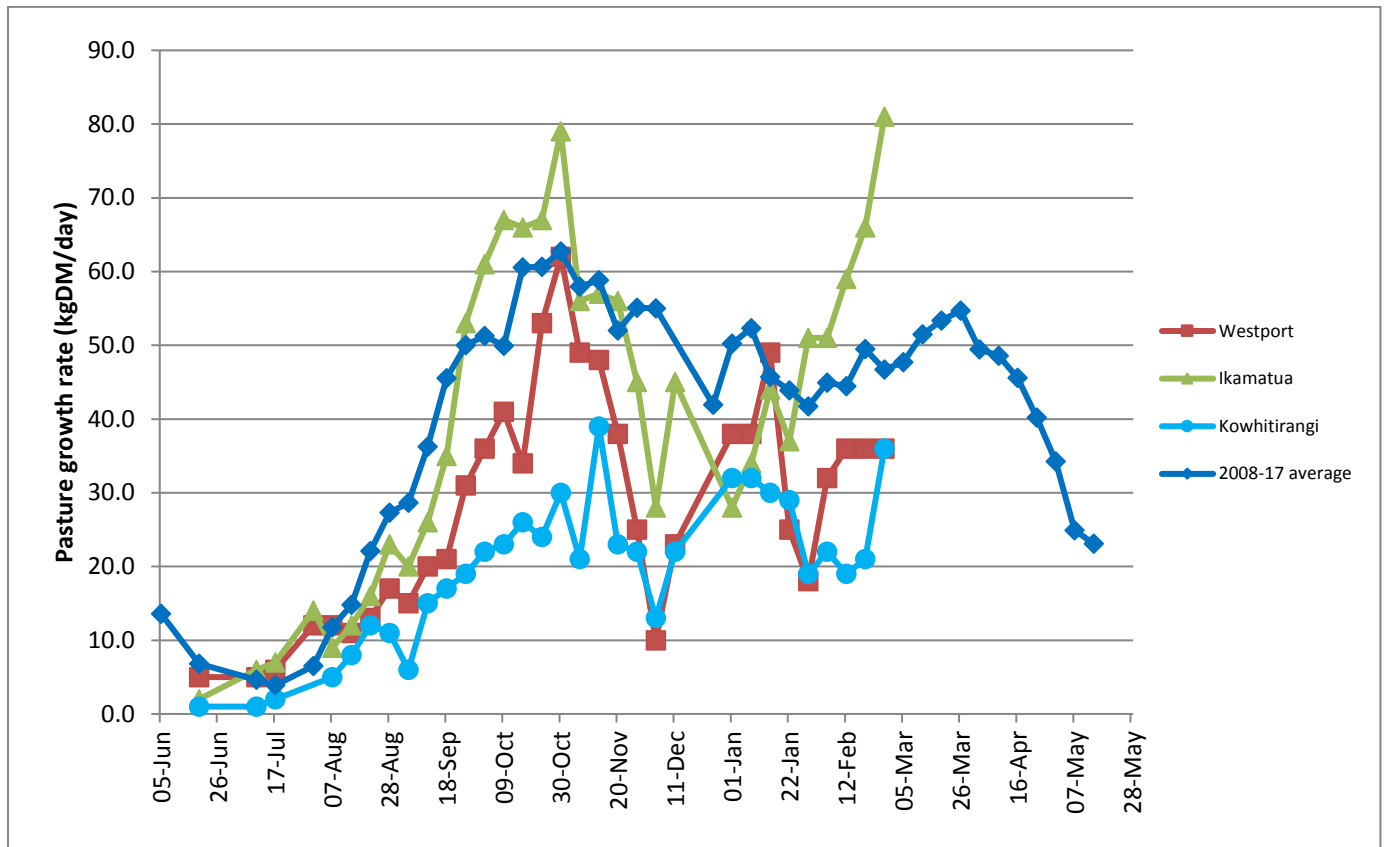
Download the tool at <https://www.dairynz.co.nz/feed/pasture-management/assessing-farm-performance/autumn-management-tool/>

Farm Summary

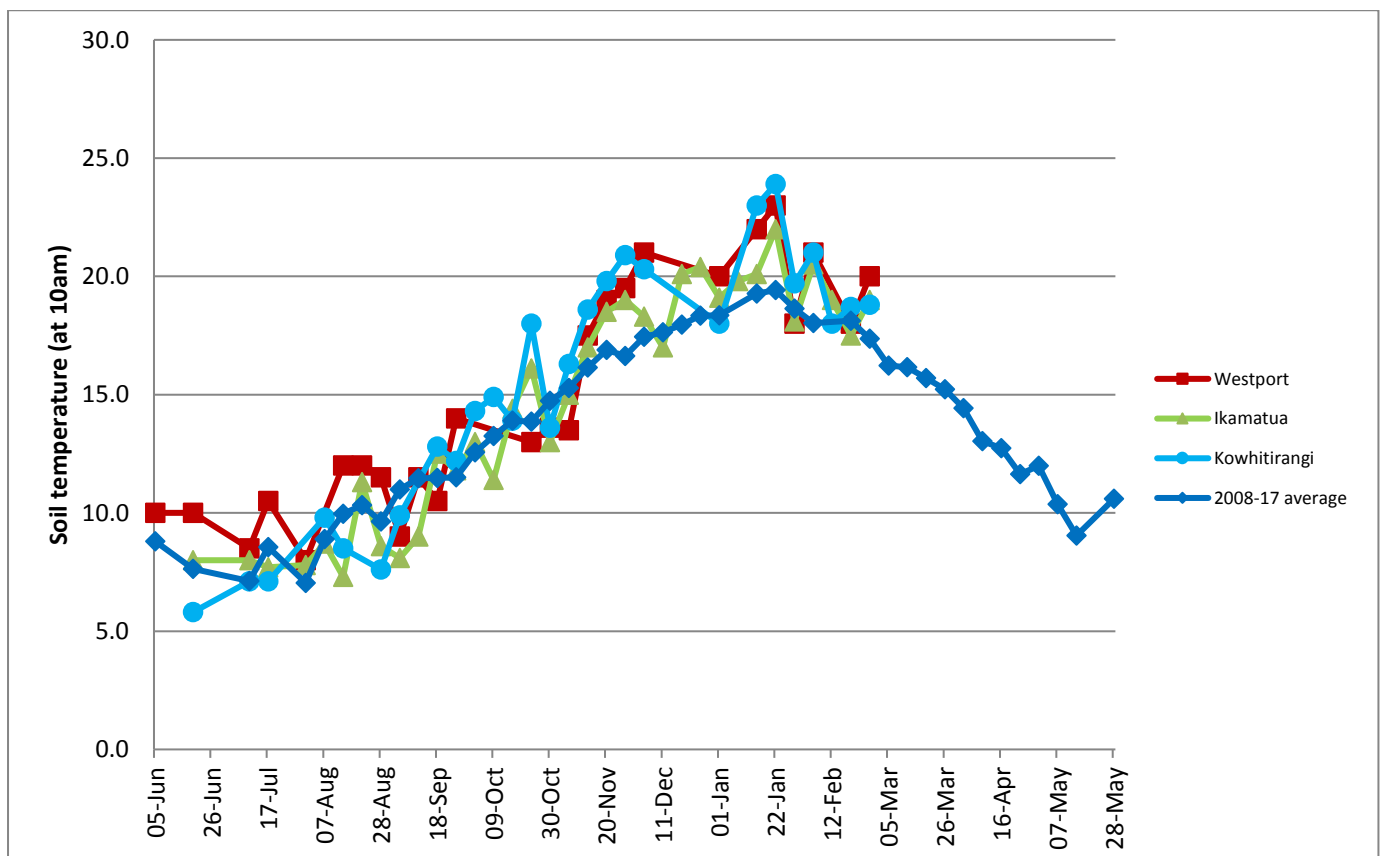
	Westport	Ikamatua	Kowhitirangi
Average cover (kg DM/ha)	2002	2179	1935
APC	1984	2102	1887
Rotation length (days)	22	22	26
Stocking rate	2.9	2.7	2.4
Percentage in milk	100	100	100
Milksolids kg/cow	1.25	1.64	1.32
Milksolids kg/ha		4.4	2.8
MS/cow (season to date)	310	372	268
MS/ha (season to date)	907	1002	638
N (kg/ha) year to date	137	133	88
Current N application rate kg N/ha	20	None	None
	5 Feb	6 Feb	7 Feb
DM%	16.3	15.4	14.6
Pasture ME	11.8	11.6	11.9
Pasture NDF	55.3	45.9	47.8
Pasture CP	27.3	27.7	24.1
Target Intake (kg DM/cow/d)	18	18	18
Supplement (kg/cow/day)	2.5	2.5	1
Soil temperature (°C)	20	19	18.8
Growth Rate (kg DM/day)	36	81	36
Rainfall	18	22	75
Conditions for farmwalk	Warm; Overcast with showers	Fine and warm	Fine and warm
Comments			

NB: pasture quality data are for 1 sample collected from each farm

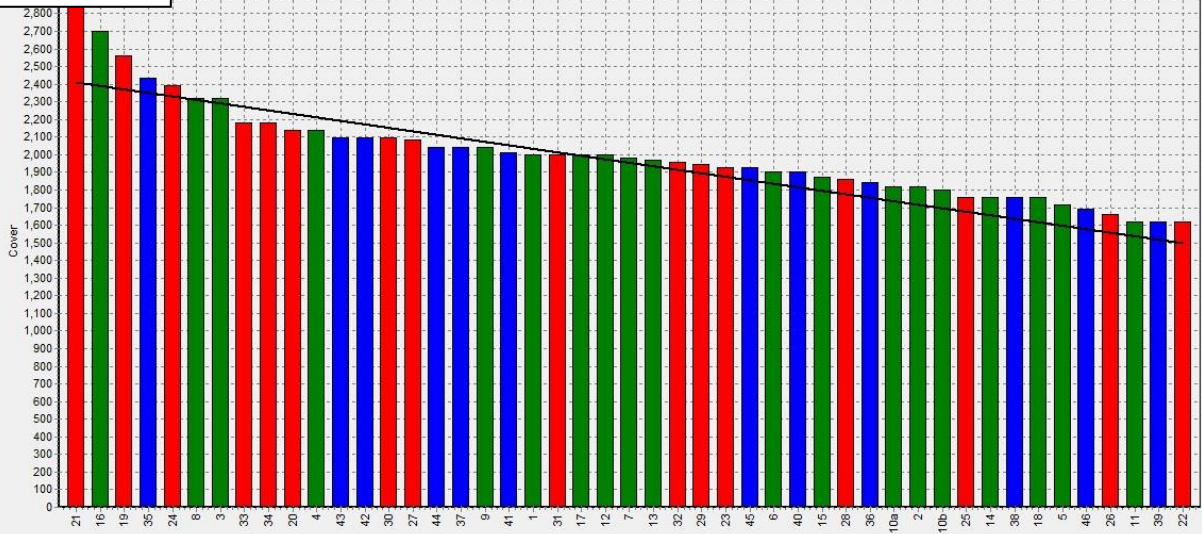
Weekly Pasture Growth Rates



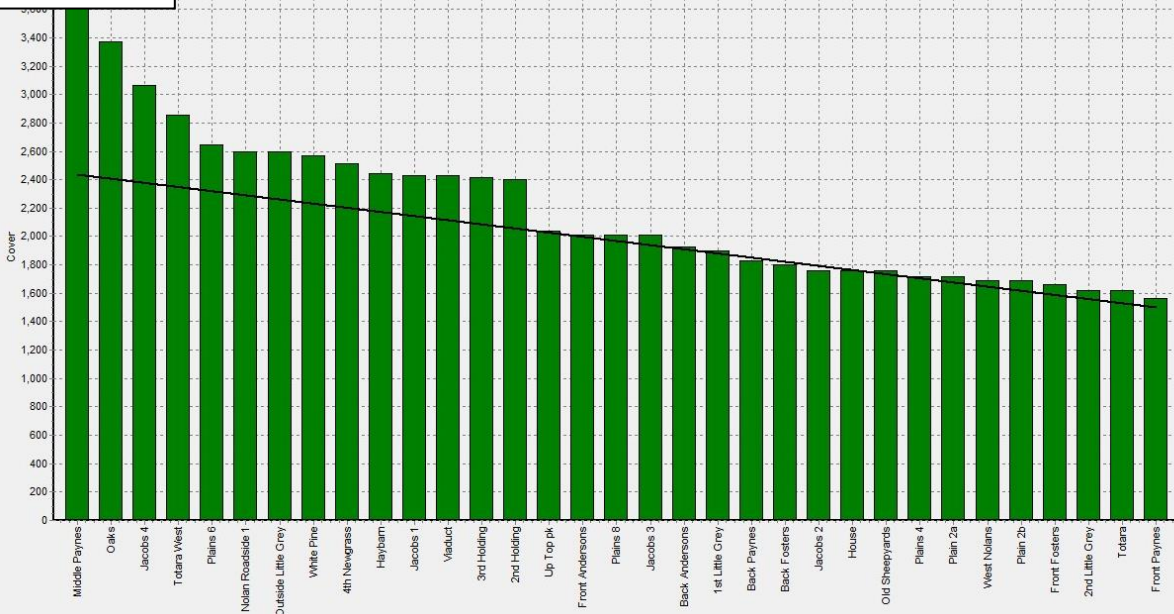
Weekly Soil Temperature



Westport



Ikamatua



Kowhitirangi



