

Westland Monitor Farm Project

Weekly Update 1 December 2017

CO comment

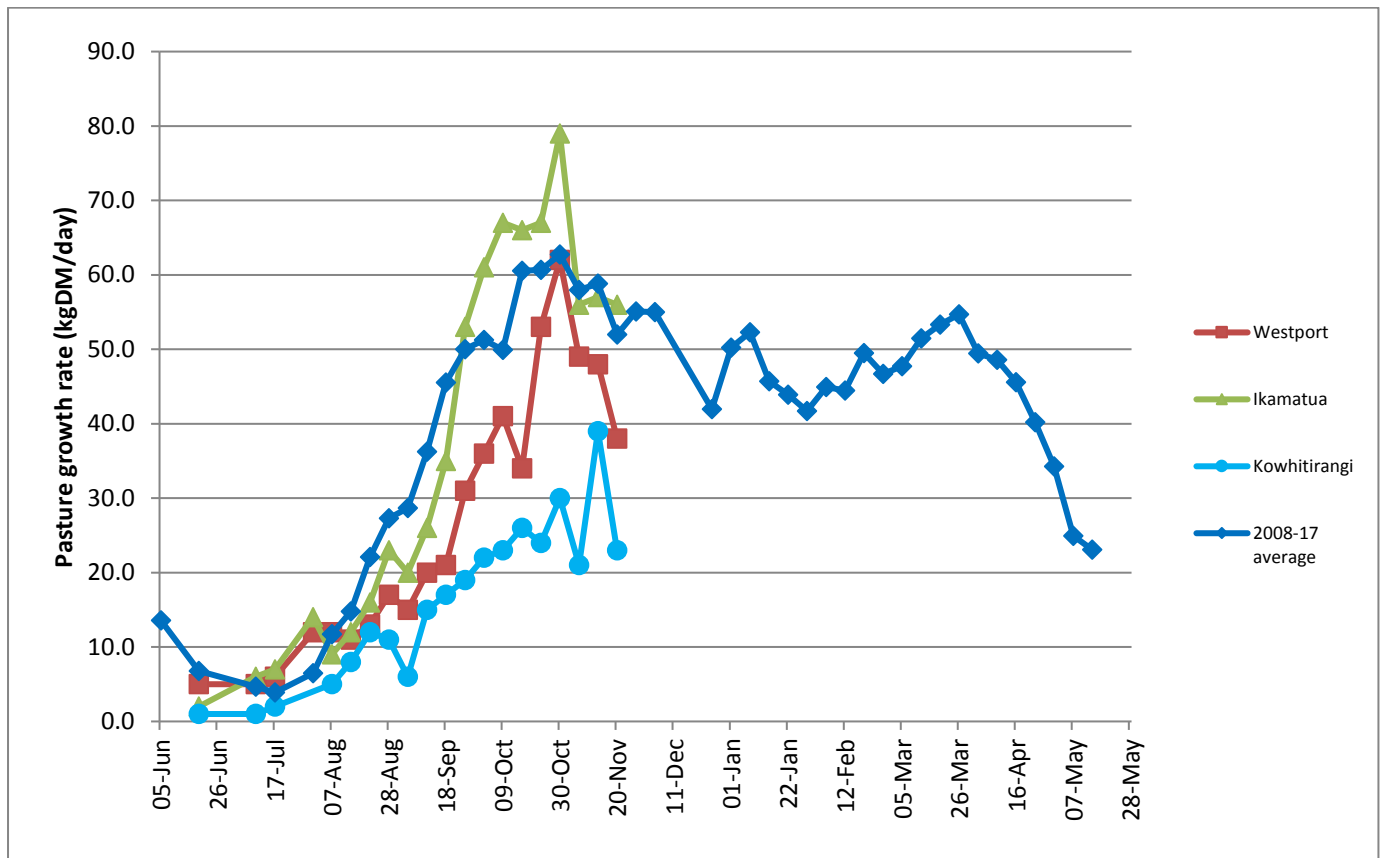
Over this latest fine period, it may be timely to pay some attention to the farm water supply. Observations from farmers are that currently hot days are placing a high demand on water supply for the cows. It's important that you and your team are briefed to check troughs before and after cows are in the paddock, monitor water pressure, and quickly fix any leaks otherwise production could be negatively affected. A recent DairyNZ study, using water meters, defined the daily drinking water requirements for cows at 44 litres/day at the trough and a flow rate required at the trough of 15 litres/cow/hour. Leakage was found to be a significant user of water on many farms, accounting for between 29-47% of the water used at the pump. That's quite a bit of water to be pumping especially if the cows are still thirsty. Be aware that feeding high DM% supplements (such as PKE, grain & hay) will increase the demand for water by the cows.

Farm Summary

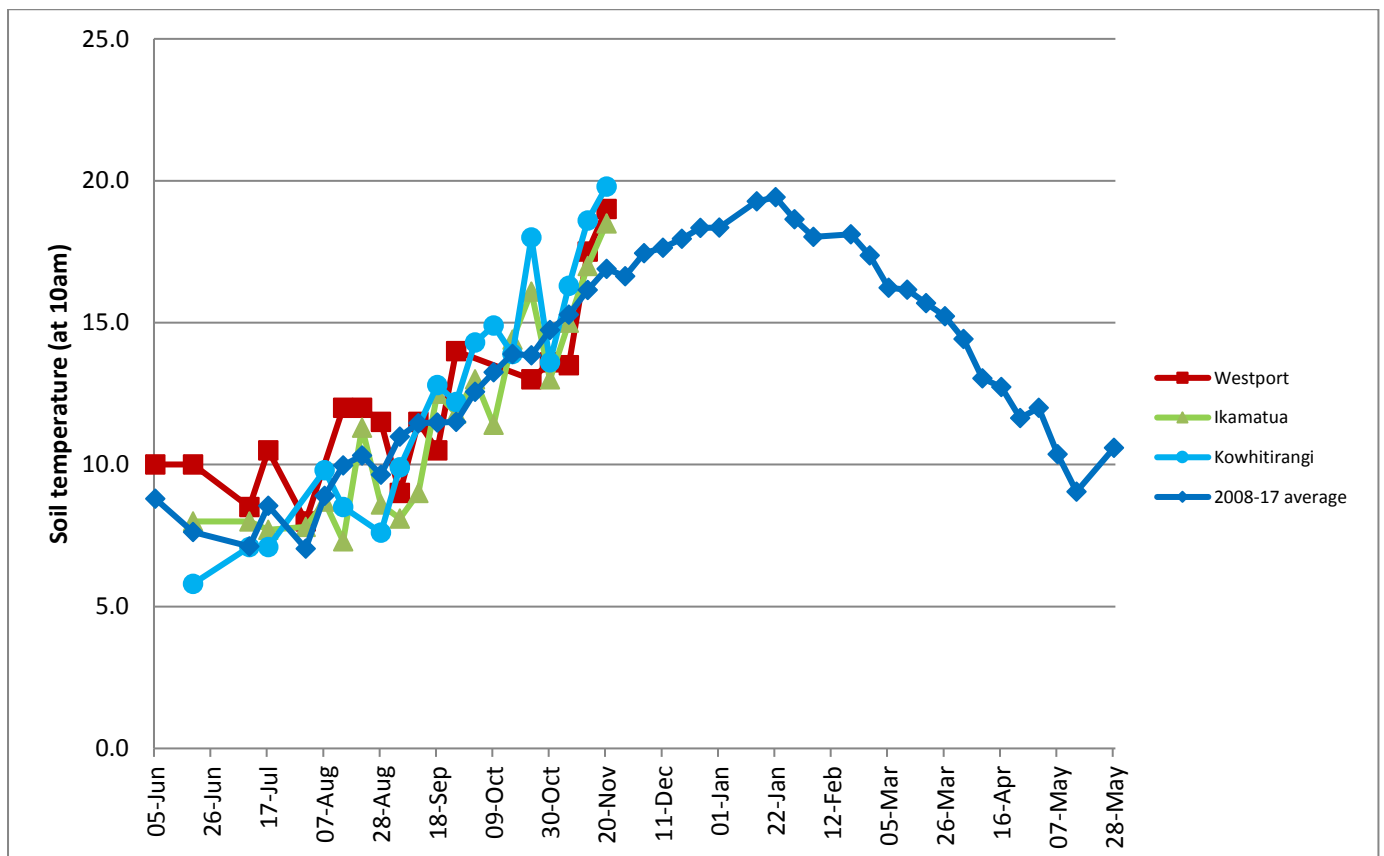
	Westport	Ikamatua	Kowhitirangi
Average cover (kg DM/ha)	2169	2055	1853
APC (24 November)	2130	2024	1854
Rotation length (days)	19	25	26
Stocking rate	2.9	2.7	2.4
Percentage in milk	100	100	100
Milksolids kg/cow	1.96	2.07	1.71
Milksolids kg/ha	5.6	5.7	3.8
MS/cow (season to date)	142	189	105
MS/ha (season to date)	415	508	251
N (kg/ha) year to date	72	87	60
Current N application rate kg N/ha	15	None	None
	30 Oct	31 Oct	1 Nov
DM%	13.5	16.2	15.6
Pasture ME	11.8	12.6	12.1
Pasture NDF	6.4	10.6	11.2
Pasture CP	26.9	26.8	21.0
Target Intake (kg DM/cow/d)	18	20	18
Supplement (kg/cow/day)	2	5	0
Soil temperature (°C)	19	18.5	19.8
Growth Rate (kg DM/day)	38	56	23
Rainfall	0	0	0
Conditions for farmwalk	Very hot; farm getting very dry	Hot; very dry; irrigation going flat out	How, dry; everyone needs rain but none in sight
Comments			

NB: pasture quality data are for 1 sample collected from each farm

Weekly Pasture Growth Rates

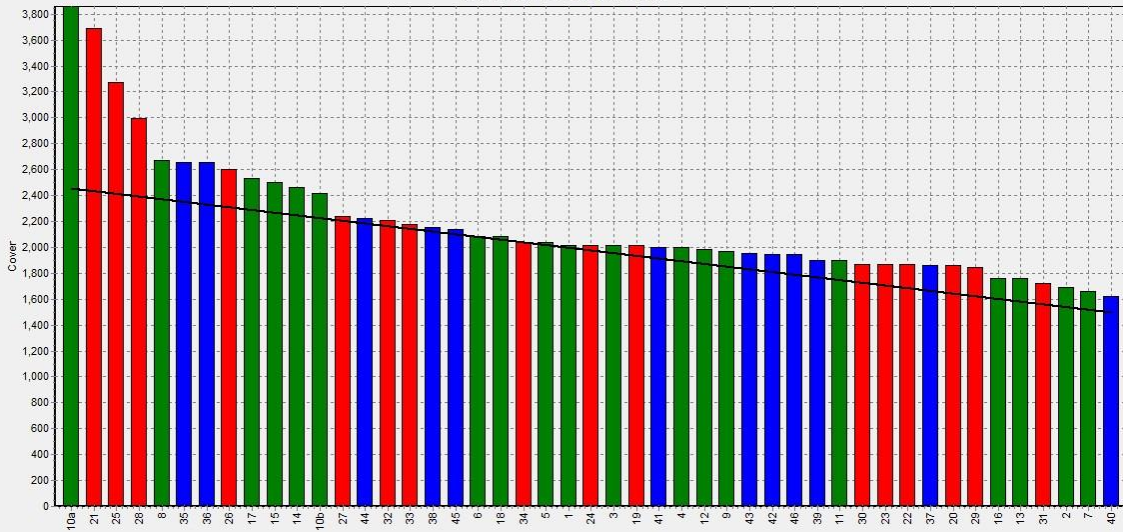


Weekly Soil Temperature



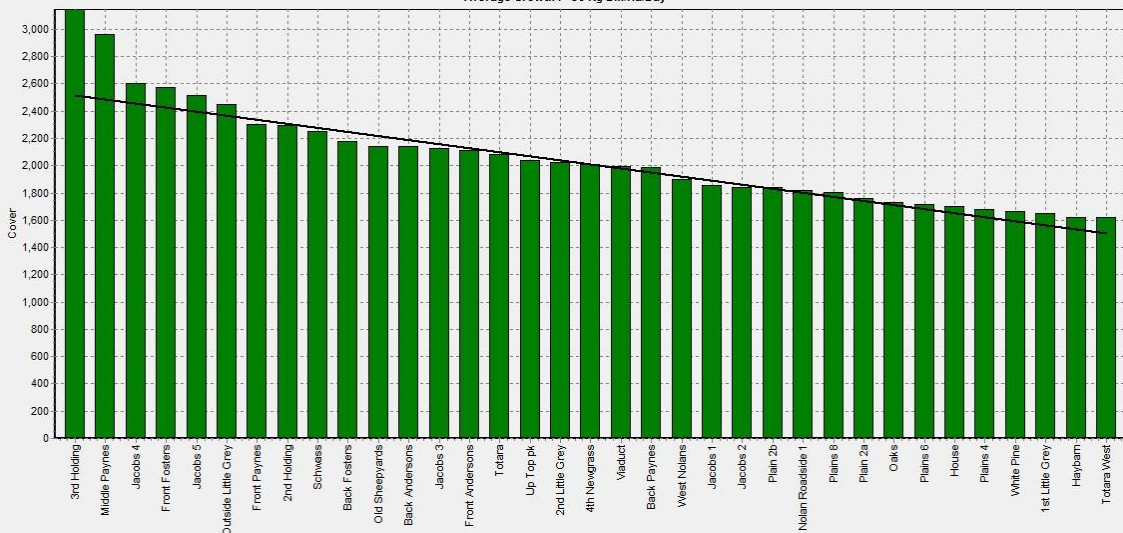
Westport

Farm Name:- ADRIAN & CHERYL GALLAGHER
 Date Read :- 27/11/2017
 Average Cover :- 2169 Kg DM/Ha
 Average Growth :- 38 Kg DM/Ha/Day



Ikamatua

Farm Name:- ANDREW_NIKI_MIRFIN
 Date Read :- 28/11/2017
 Average Cover :- 2055 Kg DM/Ha
 Average Growth :- 56 Kg DM/Ha/Day



Kowhitirangi

Farm Name:- TANE & RACHEL LITTLE
 Date Read :- 29/11/2017
 Average Cover :- 1853 Kg DM/Ha
 Average Growth :- 23 Kg DM/Ha/Day



