

Westland Monitor Farm Project

Weekly Update as at week ending Wednesday 14th February 2018

CO comment

In farm systems using low levels of supplementary feed, mature cows should be BCS 4.0 at least 100 days before calving. Cows do not gain BCS in the month before calving because so much energy is required for pregnancy (approximately 60% of the energy needed for pregnancy is required in the last month before calving). This equates to approximately 4-5 kg DM/cow/day for pregnancy. For those with a 1 August planned start of calving this means that by the 23rd March most mature cows should score 4 or above. Obviously, not all cows will calve on this day but by having a target in mind for your farm, you can then assess cows that are not meeting this and look specifically at when they will calve and what their individual needs will be. It is important to work through a plan on how targets can be achieved and it is still early enough to implement a plan to do so. There are several strategies that allow you to achieve BCS targets at calving. Drafting cows based on BCS, age and time of calving, milking OAD and running more than one herd may be appropriate. It is likely that a mix of the strategies will need to be implemented to ensure all cows achieve the BCS targets. For more information on BCS strategies visit <https://www.dairynz.co.nz/animal/body-condition-scoring/bcs-strategies/>

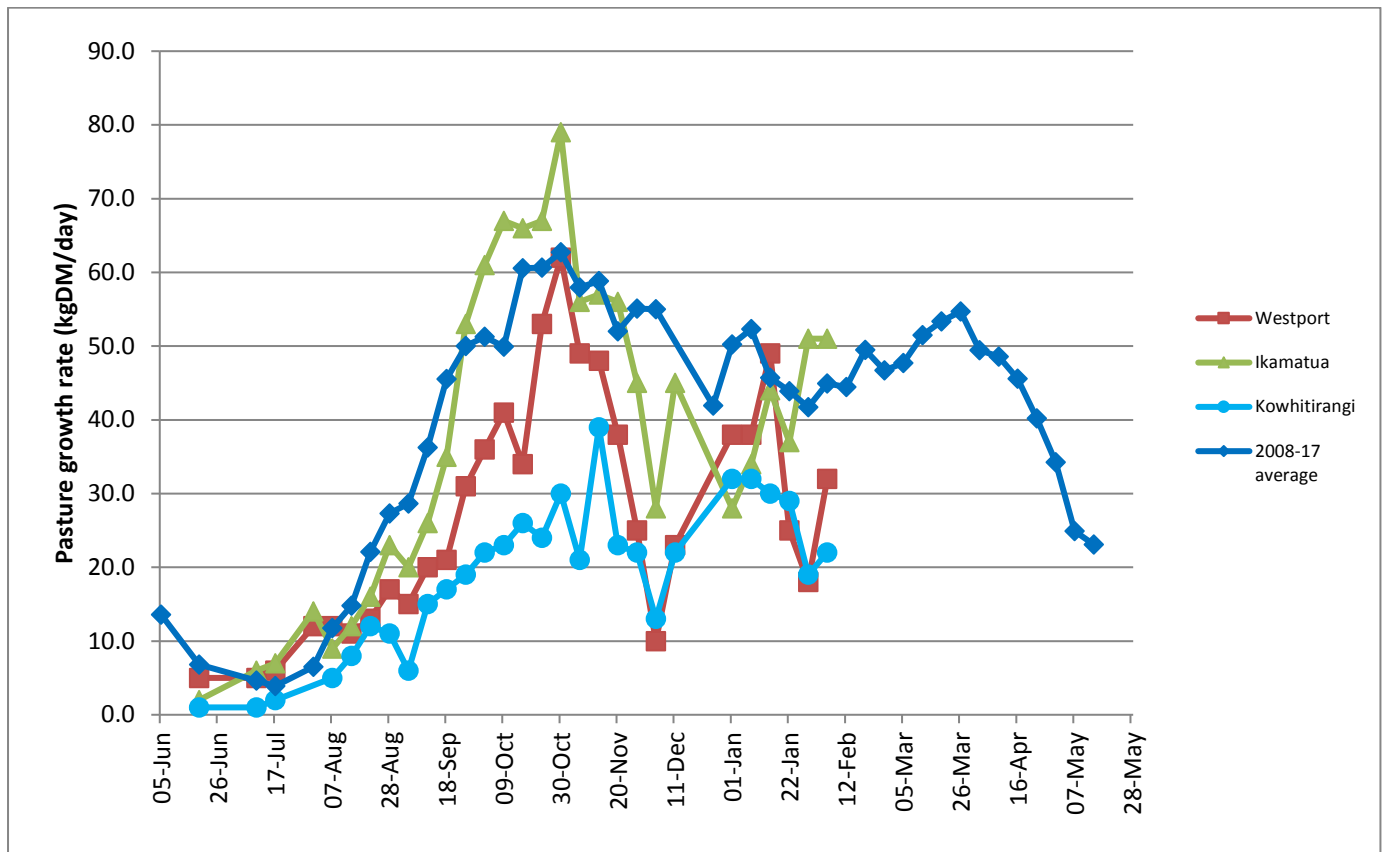
Mycoplasma Bovis farmer meetings are being held this week. For information on when they are in your area visit <https://www.dairynz.co.nz/animal/cow-health/mycoplasma-bovis/>

Farm Summary

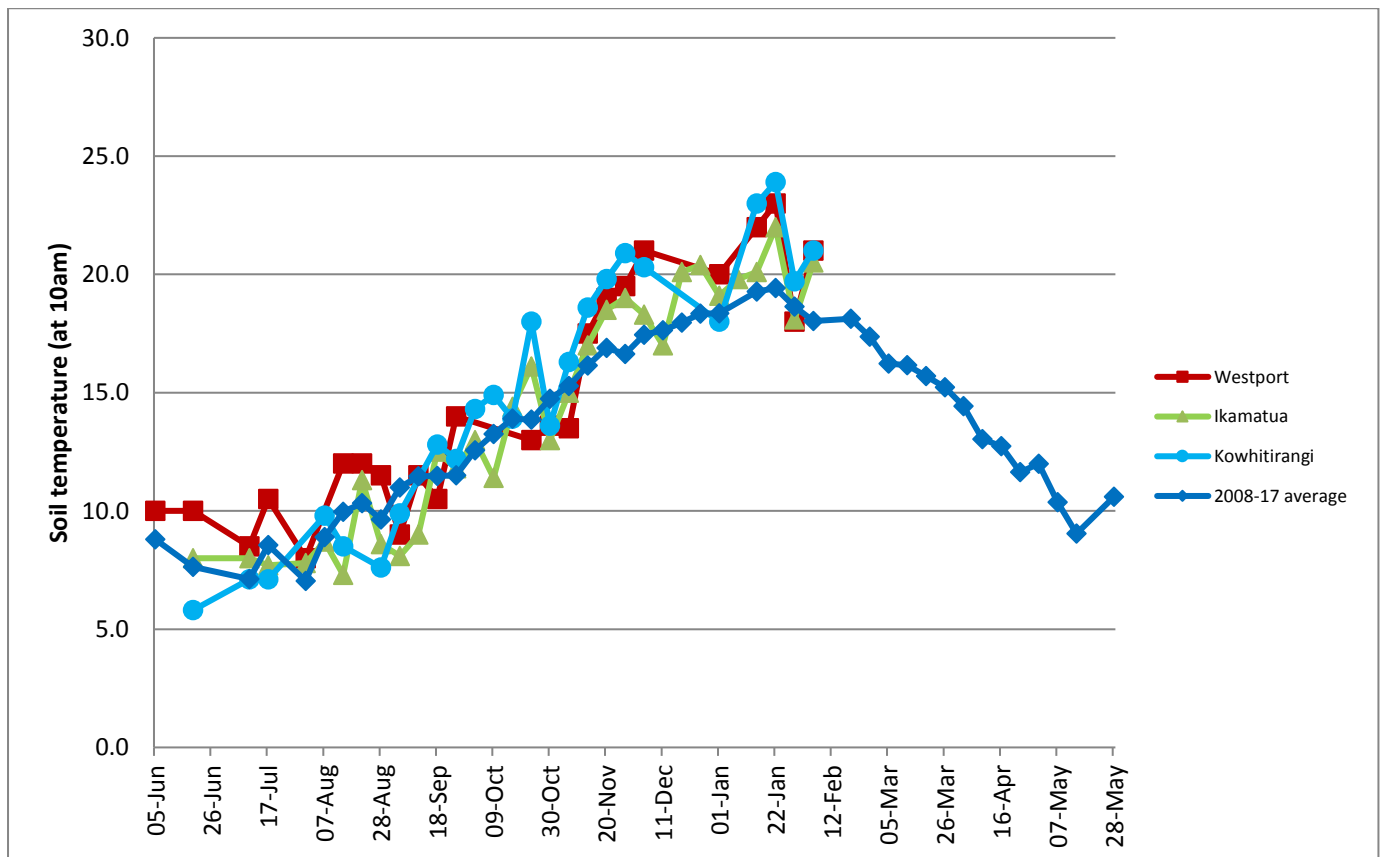
	Westport	Ikamatua	Kowhitirangi
Average cover (kg DM/ha)	1930	2135	1886
APC (7 February)	1879	2118	1898
Rotation length (days)	22	25	26
Stocking rate	2.9	2.7	2.4
Percentage in milk	100	100	100
Milksolids kg/cow	1.58	1.73	1.40
Milksolids kg/ha	4.5	4.7	3.0
MS/cow (season to date)	290	338	243
MS/ha (season to date)	848	910	578
N (kg/ha) year to date	117	118	60
Current N application rate kg N/ha	20	25	
	5 Feb	6 Feb	7 Feb
DM%	16.3	15.4	14.6
Pasture ME	11.8	11.6	11.9
Pasture NDF	55.3	45.9	47.8
Pasture CP	27.3	27.7	24.1
Target Intake (kg DM/cow/d)	18	18	18
Supplement (kg/cow/day)	3	3.5	1
Soil temperature (°C)	21	20.5	21
Growth Rate (kg DM/day)	32	51	22
Rainfall	82	74	85
Conditions for farmwalk	Hot and fine	Hot and fine	Hot and fine
Comments			

NB: pasture quality data are for 1 sample collected from each farm

Weekly Pasture Growth Rates

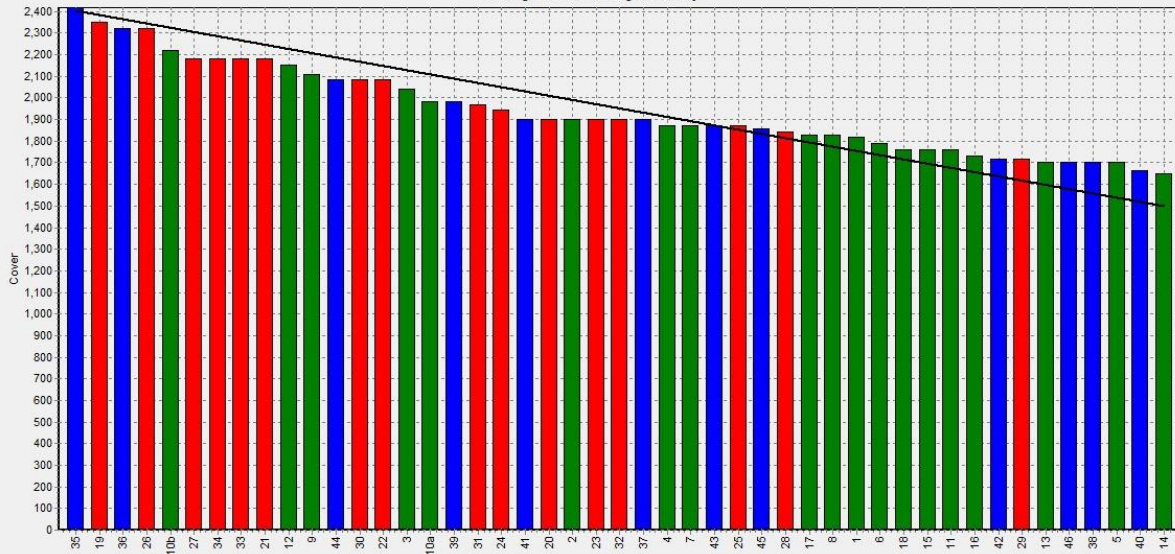


Weekly Soil Temperature



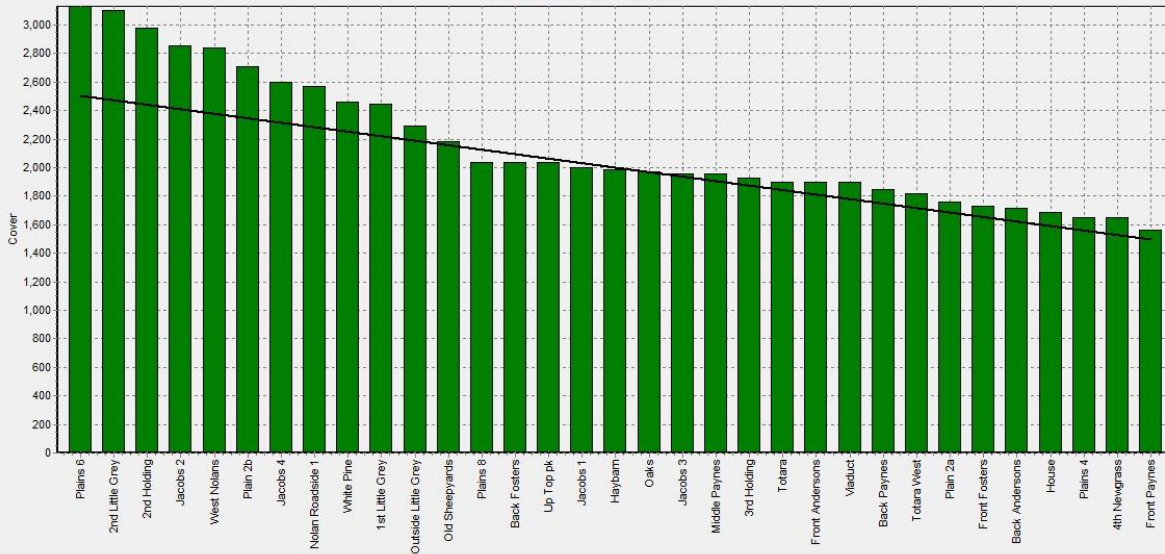
Westport

Farm Name:- ADRIAN & CHERYL GALLAGHER
 Date Read :- 12/02/2018
 Average Cover :- 1930 Kg DM/Ha
 Average Growth :- 32 Kg DM/Ha/Day



Ikamatua

Farm Name:- ANDREW_NIKI_MIRFIN
 Date Read :- 13/02/2018
 Average Cover :- 2135 Kg DM/Ha
 Average Growth :- 51 Kg DM/Ha/Day



Kowhitirangi

Farm Name:- TANE & RACHEL LITTLE
 Date Read :- 14/02/2018
 Average Cover :- 1896 Kg DM/Ha
 Average Growth :- 22 Kg DM/Ha/Day



