

# Westland Monitor Farm Project

Weekly Update as at week ending Wednesday 16 May 2018

## CO comment

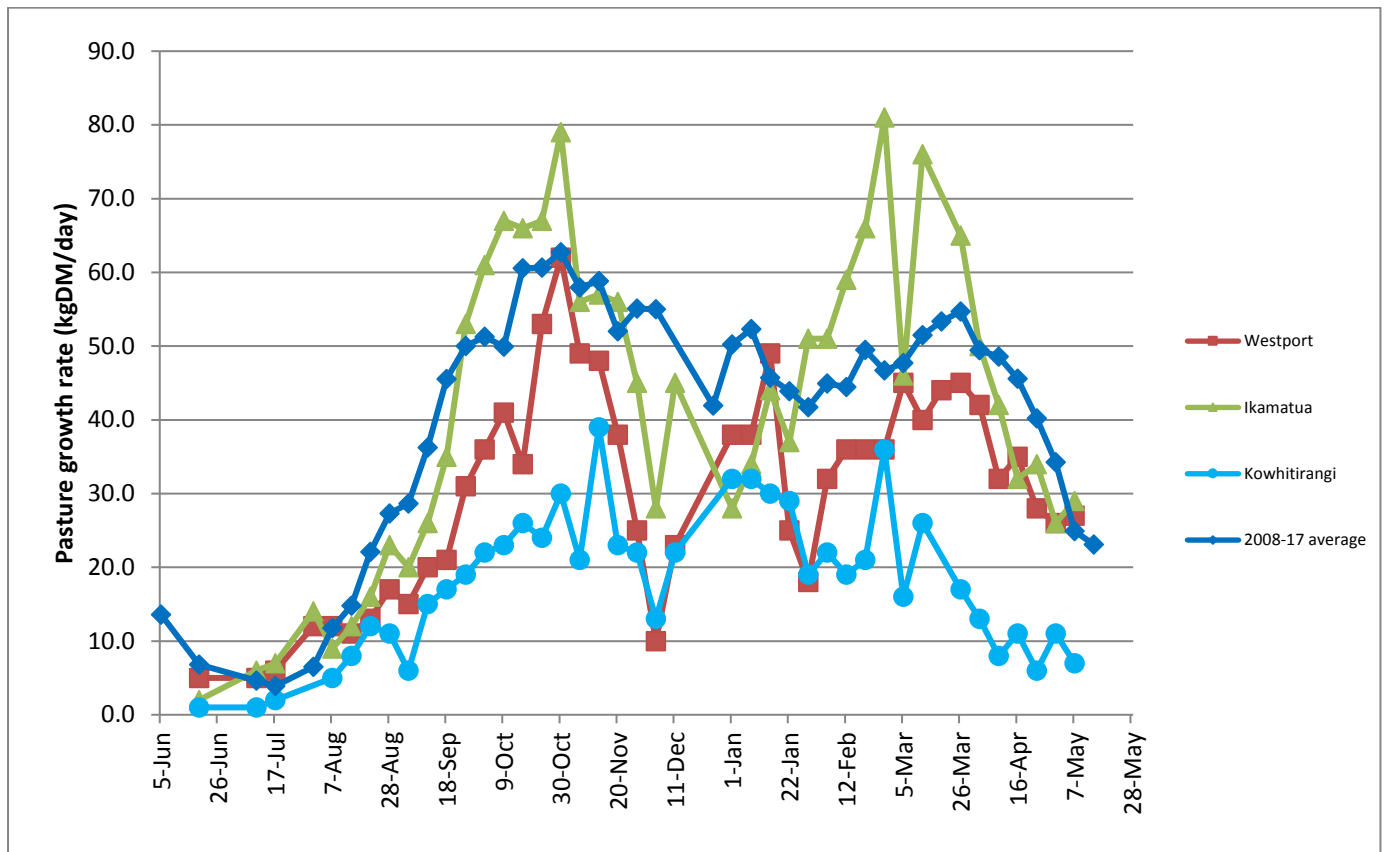
May is a month of variable growth rates, and that is being reinforced by quite the range in pasture growth rates from the Monitor Farms. Continue to regularly monitor pasture cover with a farm walk. Your focus now should be on setting up the farm for next season and achieving target pasture covers and body condition score at dry off and calving. Make sure you have a plan for drying off the herd and have revised your autumn feed budget with figures based on what you have been growing. It is one thing to have enough supplements in your feed budget and suitable average pasture cover, but do you have enough time for cows to physically gain the body condition they need for calving. Confirm your dry cow therapy options with your veterinarian. Give priority to drying off earlier calving cows as they will have less time over the dry period to put on the required body condition. If drying cows off in smaller groups make sure they are adequately marked and there is no opportunity for them to re-enter the milking herd, especially if dry cow therapy is being used.

## Farm Summary

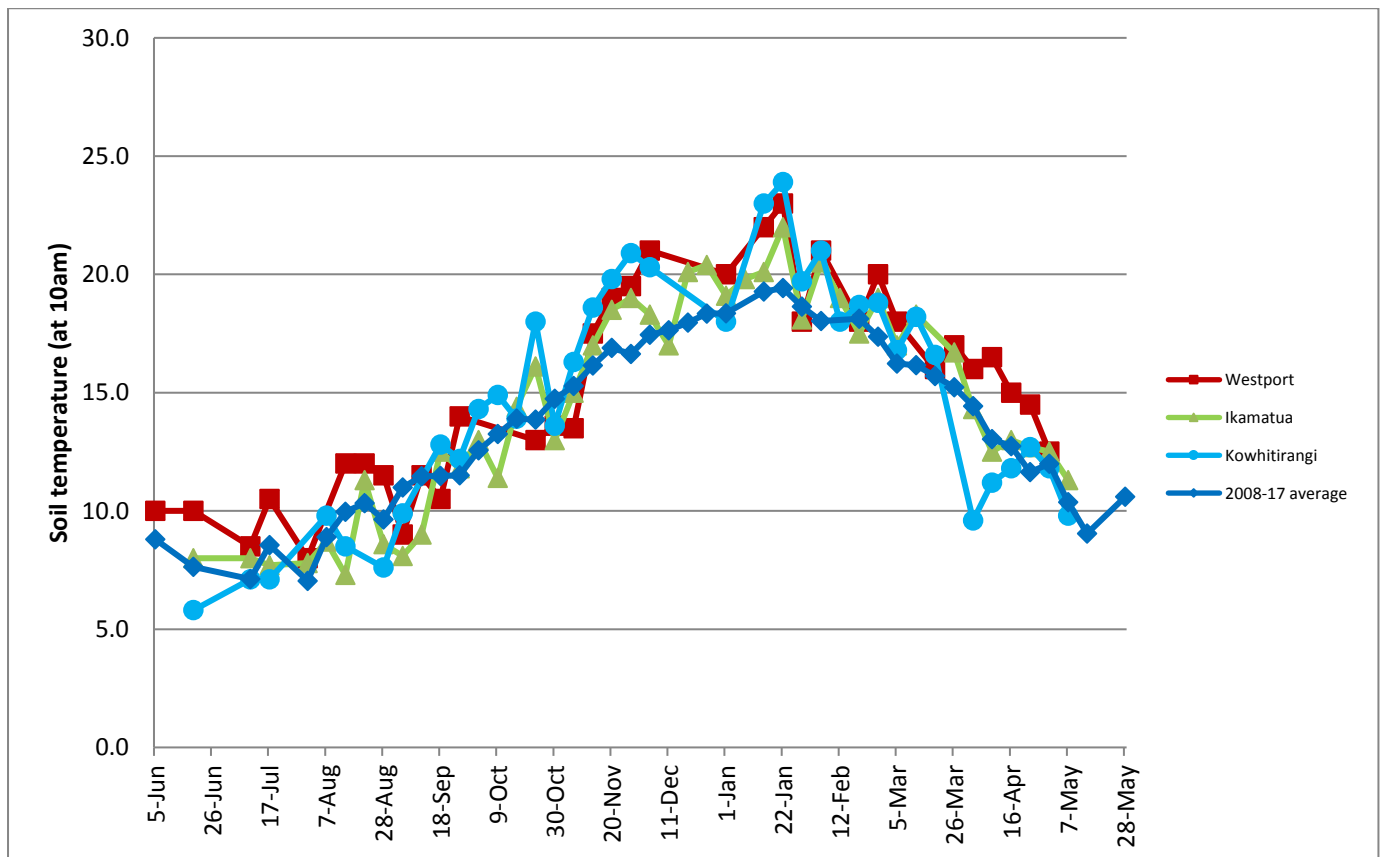
	Westport	Ikamatua	Kowhitirangi
Average cover (kg DM/ha)	1955	1943	1727
APC (9 May)	1940	1922	1733
Rotation length (days)	32	30	
Stocking rate	2.25	2.1	
Percentage in milk	69.0	75.0	
Milksolids kg/cow	1.02	1.55	
Milksolids kg/ha	2.2	2.7	
MS/cow (season to date)	368	465	
MS/ha (season to date)	1078	1251	
N (kg/ha) year to date	190	216	88
Current N application rate kg N/ha	20	30	
	2 April	3 April	4 April
DM%	16.9	12.9	10.7
Pasture ME	>12.7	12.3	>12.7
Pasture NDF	45.4	44.4	39.4
Pasture CP	26.3	32.2	29.5
Target Intake (kg DM/cow/d)	17	16	
Supplement (kg/cow/day)	1.92	5	
Soil temperature (°C)		11.3	9.8
Growth Rate (kg DM/day)	27	29	7
Rainfall	37	11.3	
Conditions for farmwalk	Fine; Been raining a lot	Fine but cold	Fine and warm
Comments			

NB: pasture quality data are for 1 sample collected from each farm

## Weekly Pasture Growth Rates

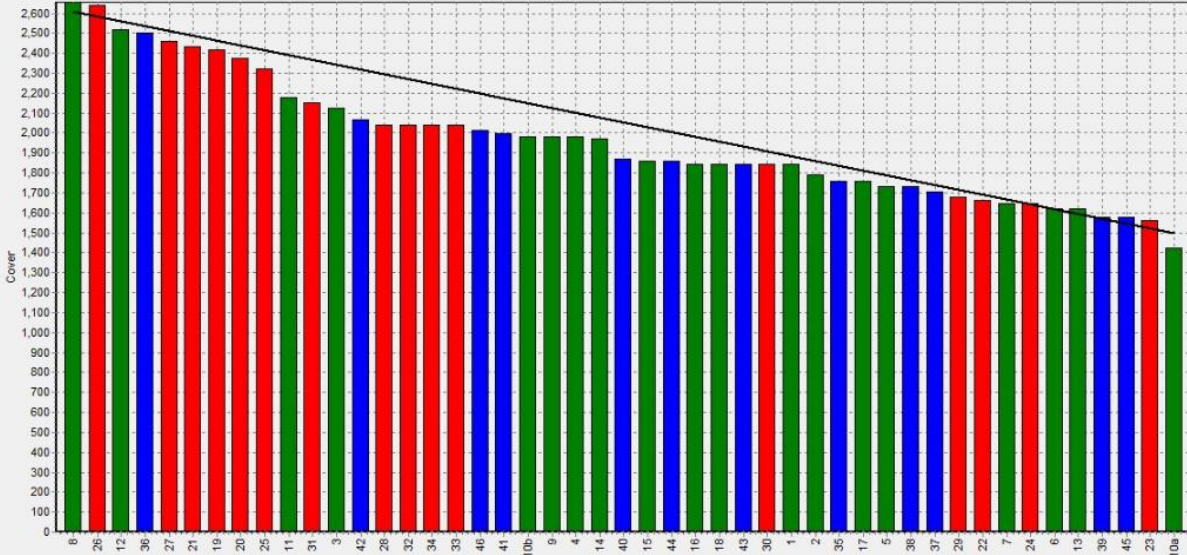


## Weekly Soil Temperature



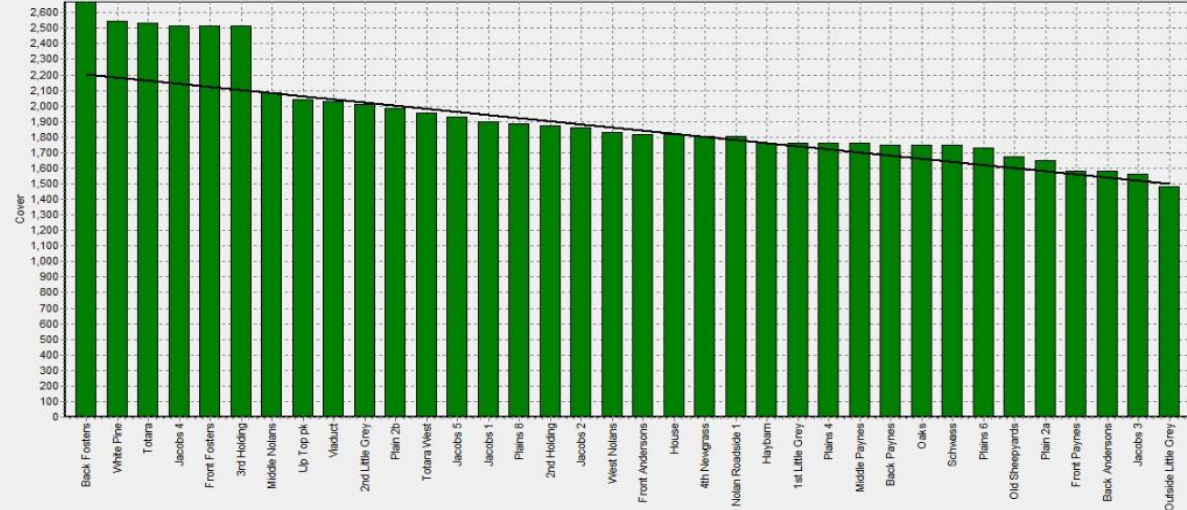
# Westport

Farm Name:- ADRIAN & CHERYL GALLAGHER  
 Date Read :- 14/05/2018  
 Average Cover :- 1955 Kg DM/Ha  
 Average Growth :- 27 Kg DM/Ha/Day



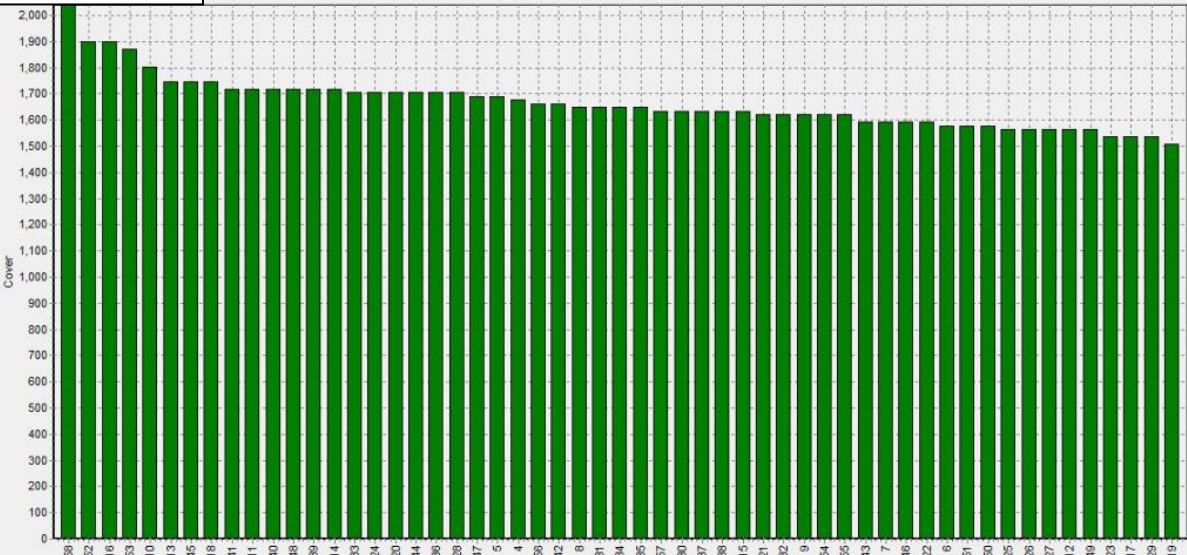
# Ikamatua

Farm Name:- ANDREW\_NIKI\_MIRFIN  
 Date Read :- 15/05/2018  
 Average Cover :- 1943 Kg DM/Ha  
 Average Growth :- 29 Kg DM/Ha/Day



# Kowhitirangi

Farm Name:- TANE & RACHEL LITTLE  
 Date Read :- 16/05/2018  
 Average Cover :- 1727 Kg DM/Ha  
 Average Growth :- 7 Kg DM/Ha/Day





# Ikamatua

Description	Date	RPM	% DM	% Prot	% Lipid	% ADF	% NDF	Sol Sugar	OMD %	MJME/kg
Haybarn	06/06/2017	14.8	16.3	29	5.4	19.6	37.4	12.7	>85	12.7
Totara east	03/08/2017	10.3	15.7	26.9	5.1	20.2	35.8	16.7	>85	>12.7
Totara west	03/08/2017	10.9	17.4	24.4	5.1	20.8	37.2	19.9	>85	>12.7
Plain 5	03/08/2017	12.2	17.3	24.5	4.7	20.5	41.4	16.7	>85	>12.7
Viaduct	03/08/2017	13.6	16.4	22.8	4.6	21.8	37.9	21.3	>85	>12.7
Mid-Payne	03/08/2017	15.8	16.7	22.2	4.7	23.7	41	16.1	80.8	11.8
Jacobs 2	03/08/2017	10.3	16.7	27	5.5	21.1	38	13.6	>85	12.5
Front Payne	05/09/2017	8.8	15.7	25	5	26.4	41	8.6	81.1	11.8
Schwass	04/10/2017	16.4	13	29	5	21.4	44.5	10.2	90.3	>12.7
Jacobs 2	31/10/2017	16.6	16.2	26.8	10	39.7	10.6			12.6
Back Foster	05/12/2017	15.9	17.7	28.8	4.8	22.9	46.7	11.6	87.1	12.7
Old sheep yards	16/1/2018	13.0	13.2	30.1	4.5	25.6	52.7	3.1	82.4	12.0
Jacobs 4	6/2/2018	10.8	15.4	27.7	4.8	25.8	45.9	8.7	79.4	11.6
Pine	6/3/2018	14.8	11.2	33.8	3.8	22.7	49.5	4.6	90.8	>12.7
West Nolan	3/4/2018	15.3	12.9	32.2	5.7	23.8	44.4	4.5	84.2	12.3
Plain 4	8/5/18	11.3	12.8	28.9	4.8	22.5	42.6	8.0	86.9	12.7

## Kowhitirangi

Description	Date	RPM	% DM	% Prot	% Lipid	% ADF	% NDF	Sol Sugar	OMD %	MJME/kg
6	7/6/2017	10.1	15	24.2	5	18.8	34.9	18.8	>85	>12.7
10	3/8/2017	10.7	17.6	21.0	4.7	25.2	44.8	15.4	80.9	11.6
21	6/9/2017	10.6	15.4	23.6	3.8	22.8	42.4	14.3	89.1	>12.7
4	5/10/2017	9.9	13.8	21.5	4.4	21.3	37.9	16.1	89.0	>12.7
2	1/11/2017	10.4	15.6	21.0	9.5	41.6	11.2			12.1
33	6/12/2017	12.3	19.1	24.6	4.2	24.3	55.1	9.2	84.9	12.4
27	17/1/2018	14.3	12.0	27.5	3.9	25.4	53.8	4.3	84.2	12.3
16	7/2/2018	13.9	14.6	24.1	3.4	25.9	47.8	6.2	81.4	11.9
52	7/3/2018	12.7	13.7	31.7	4.4	23	46.8	5.2	89.9	>12.7
20	6/4/2018	12.3	10.7	29.5	5.8	21.3	39.4	8.9	>85	>12.7