

Westland Monitor Farm Project

Weekly Update 16 November 2017

CO comment

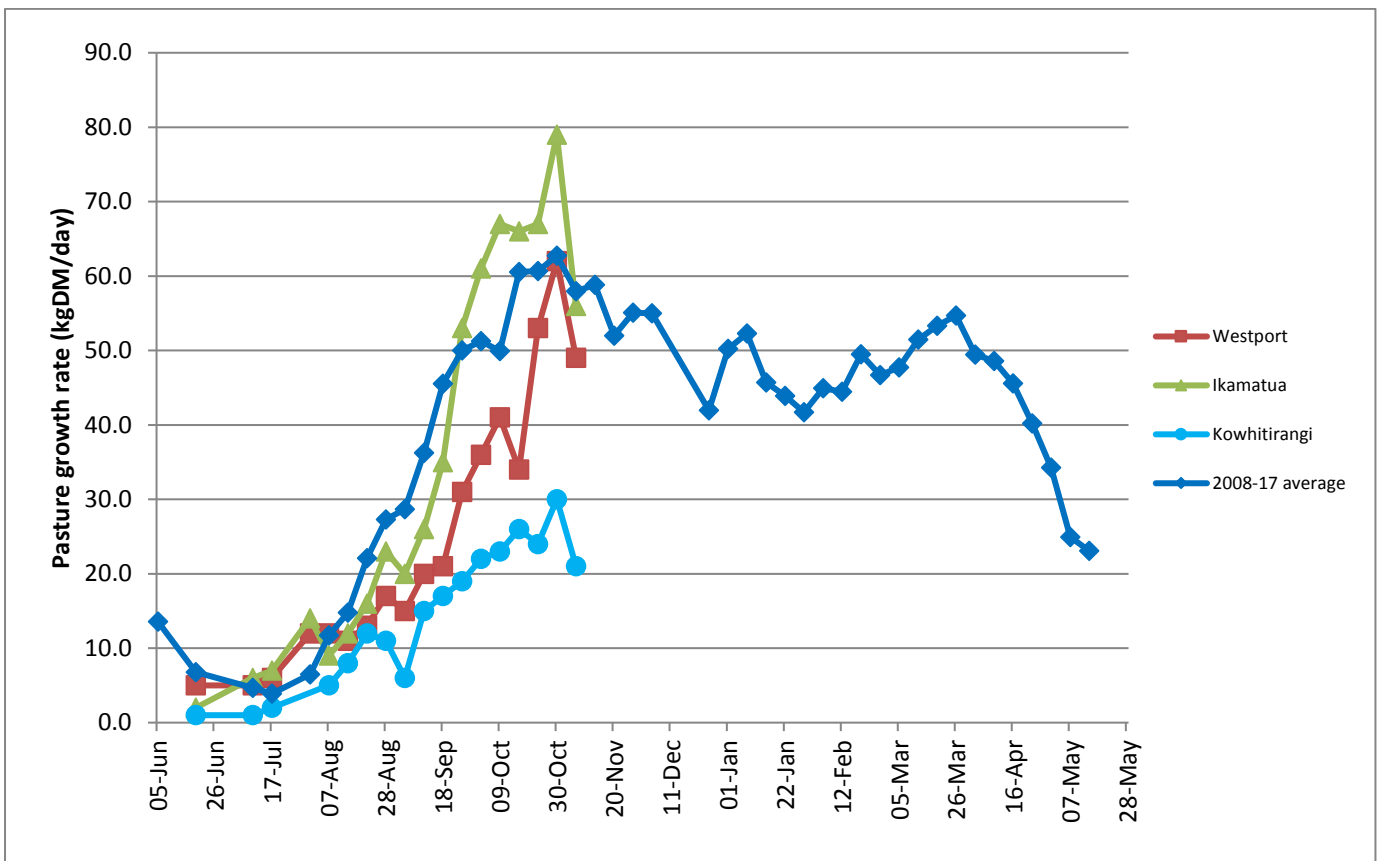
Keep the vigilance around heat detection going. Second and third cycles are often more difficult for heat detection as fewer cows are participating in heat activity. Keeping heat detection aids such as tail paint, up to date will help to identify cycling cows. Make sure enthusiasm is maintained amongst staff for the heat detection task. Using short gestation semen can help recover some days in milk for later mated cows. With so much going on at this time of year it can be easy to overlook the replacement heifer calves. Achieving target liveweights at weaning is critical if performance targets are to be met down the track. Basing decisions on a measured liveweight is going to be far more effective than weaning decisions based on age or guesswork. Once weaned onto pasture, keep providing access to meal or other protein rich feedstuffs, at up to 2kg/head/day, gradually reducing this over the next few months. Check the liveweight progress by regular weighing's and if there are animals not putting on weight they should be pulled out for preferential feeding.

Farm Summary

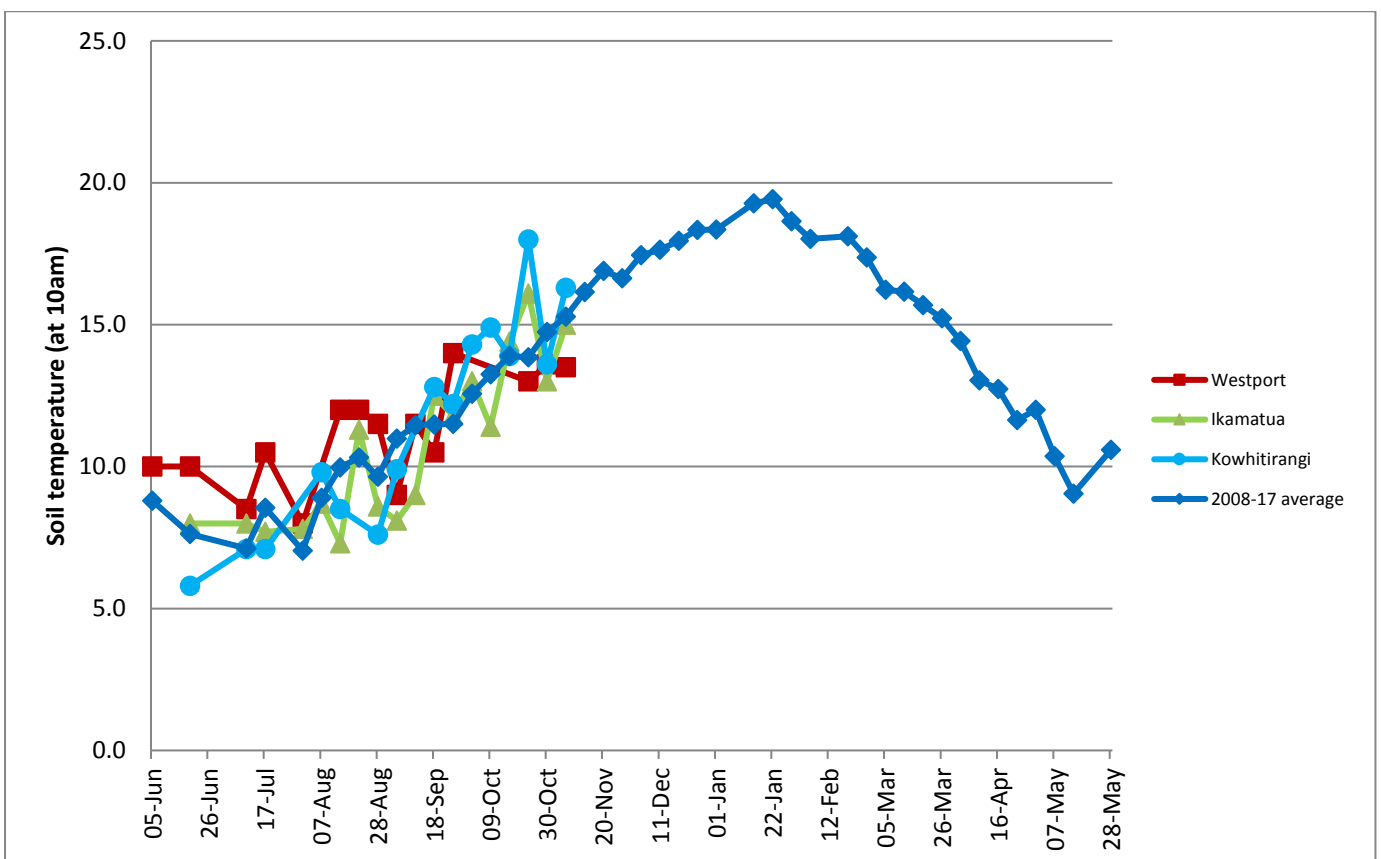
	Westport	Ikamatua	Kowhitirangi
Average cover (kg DM/ha)	2096	2019	1888
APC (9 November 2017)	2127	2061	1893
Rotation length (days)	18	20	26
Stocking rate	2.9	2.7	2.4
Percentage in milk	100	100	100
Milksolids kg/cow	1.94	2.19	1.77
Milksolids kg/ha	5.6	5.9	4.0
MS/cow (season to date)	118.6	158.8	94.1
MS/ha (season to date)	347	428	224
N (kg/ha) year to date	62	81	60
Current N application rate kg N/ha	15	25	None
	30 Oct	31 Oct	1 Nov
DM%	13.5	16.2	15.6
Pasture ME	11.8	12.6	12.1
Pasture NDF	6.4	10.6	11.2
Pasture CP	26.9	26.8	21.0
Target Intake (kg DM/cow/d)	18	20	18
Supplement (kg/cow/day)	1.5	4.0	2.5
Soil temperature (°C)	13.5	15.0	16.3
Growth Rate (kg DM/day)	49	56	21
Rainfall	16	24	6.5
Conditions for farmwalk	Fine, warm	Fine, warm	Fine, warm
Comments			

NB: pasture quality data are for 1 sample collected from each farm

Weekly Pasture Growth Rates

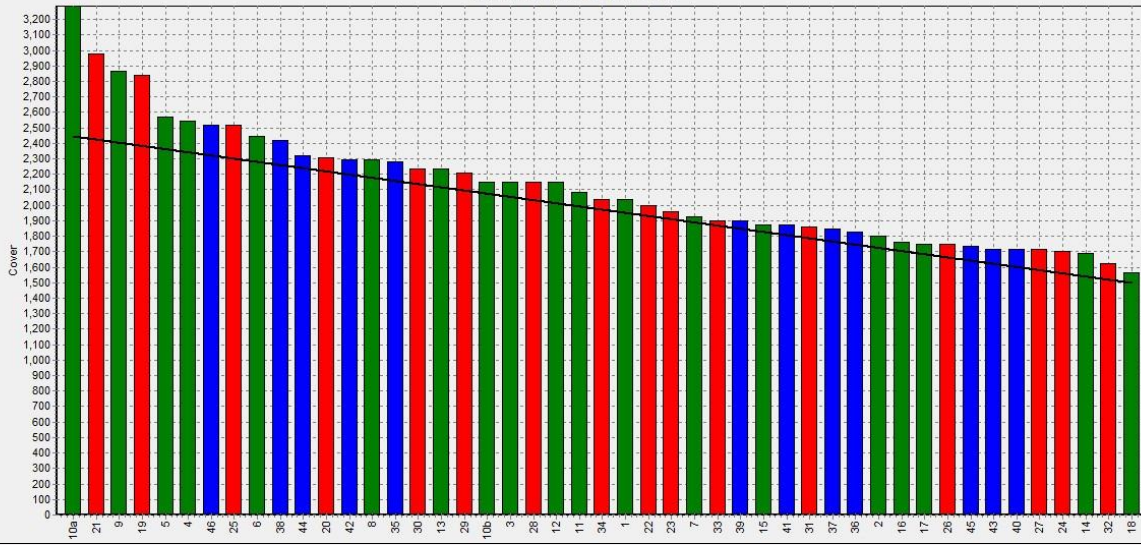


Weekly Soil Temperature



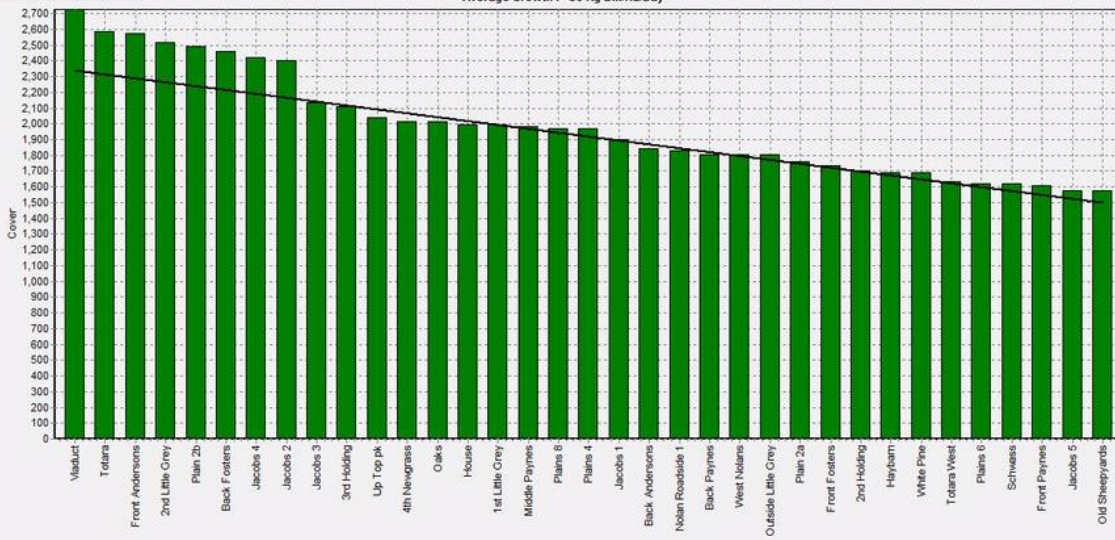
Westport

Farm Name:- ADRIAN & CHERYL GALLAGHER
 Date Read :- 13/11/2017
 Average Cover :- 2096 Kg DM/Ha
 Average Growth :- 49 Kg DM/Ha/Day



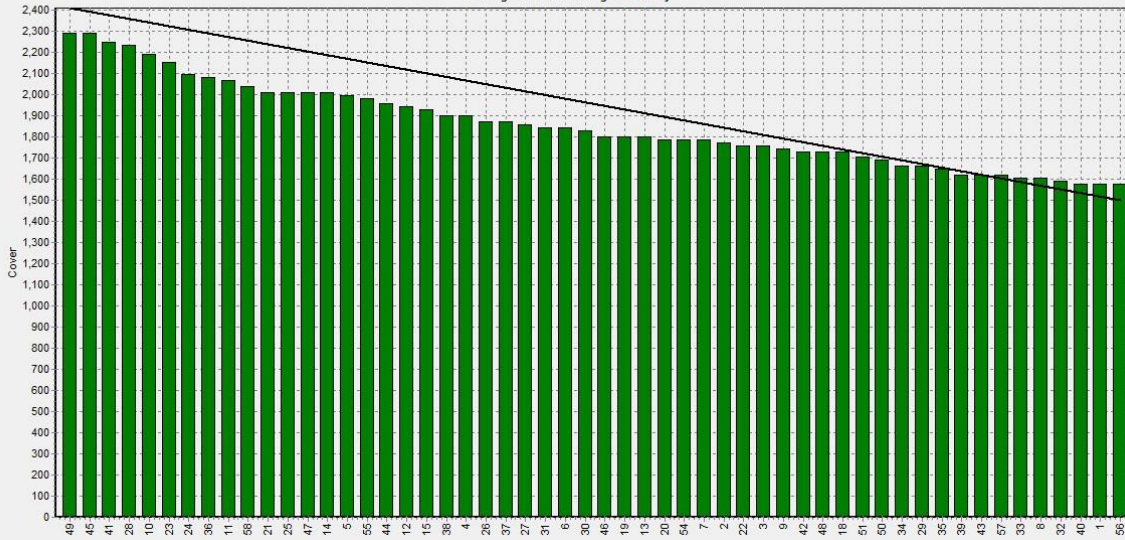
Ikamatua

Farm Name:- ANDREW_NIKI_MIRFIN
 Date Read :- 14/11/2017
 Average Cover :- 2019 Kg DM/Ha
 Average Growth :- 56 Kg DM/Ha/Day



Kowhitirangi

Farm Name:- TANE & RACHEL LITTLE
 Date Read :- 15/11/2017
 Average Cover :- 1888 Kg DM/Ha
 Average Growth :- 21 Kg DM/Ha/Day



Pasture Quality

NOTE: We sample the paddocks immediately in front of the milkers, to height of 3.5cm (7 clicks on the rising plate meter). The RPM data in the table is the pre-grazing clicks recorded on the day of sampling.

Westport

Description	Date	RPM	% DM	% Prot	% Lipid	% ADF	% NDF	Sol Sugar	OMD %	MJME /kg
42	5/6/2017	10.0	16.7	37.8	5.4	20.4	43.6	5.1	>85	>12.7
44	3/8/2017	14.8	20.0	27.3	5.2	22.9	46.4	8.0	84.6	12.4
4	4/9/2017	10.3	15.4	31.9	5.3	22.4	42.2	5.9	88.5	12.9
26	3/10/2017	13.8	11.8	30.1	3.8	23.7	49.8	5.5	91.2	>12.7
40	3/10/2017	11.4	13.5	26.9	10.9	40.0	6.4			11.8

Kowhitirangi

Description	Date	RPM	% DM	% Prot	% Lipid	% ADF	% NDF	Sol Sugar	OMD %	MJME/kg
6	7/6/2017	10.1	15	24.2	5	18.8	34.9	18.8	>85	>12.7
10	3/8/2017	10.7	17.6	21.0	4.7	25.2	44.8	15.4	80.9	11.6
21	6/9/2017	10.6	15.4	23.6	3.8	22.8	42.4	14.3	89.1	>12.7
4	5/10/2017	9.9	13.8	21.5	4.4	21.3	37.9	16.1	89.0	>12.7
2	1/11/2017	10.4	15.6	21.0	9.5	41.6	11.2			12.1