

Westland Monitor Farm Project

Weekly Update as at week ending Wednesday 18 April 2018

CO comment

With the cold snap that hit a couple of weeks ago, we have seen growth rates across the West Coast drop.

Having a feed budget is essential to making the best decisions around managing your feed requirements.

The simple feed budget is a useful tool for proactive decision making. This budget can be used at any stage of the season but is best used as a partial budget for the following periods:

- As an autumn budget through to June 1 or dry off cover target.
- As a winter budget from June 1 through to Planned Start of Calving.
- From Planned Start of Calving through to Balance Date.

For more information, visit <https://www.dairynz.co.nz/feed/pasture-management/assessing-farm-performance/feed-budgets/>

Whilst a feed budget can aid in decision making, the body condition score (BCS) of your herd should also be considered.

Cows with 1 BCS lower than target will:

- Take 8-10 days longer to start cycling
- Result in a later calving date the following year
- Produce approx. 15kg milk solids less in the following lactation.

Remember realistically dry cows only gain ½ BCS in 30 days unless very well fed with high quality supplement. Do not expect cows to gain BCS during their final month of pregnancy.

For body condition score strategies visit <https://www.dairynz.co.nz/animal/body-condition-scoring/bcs-strategies/>

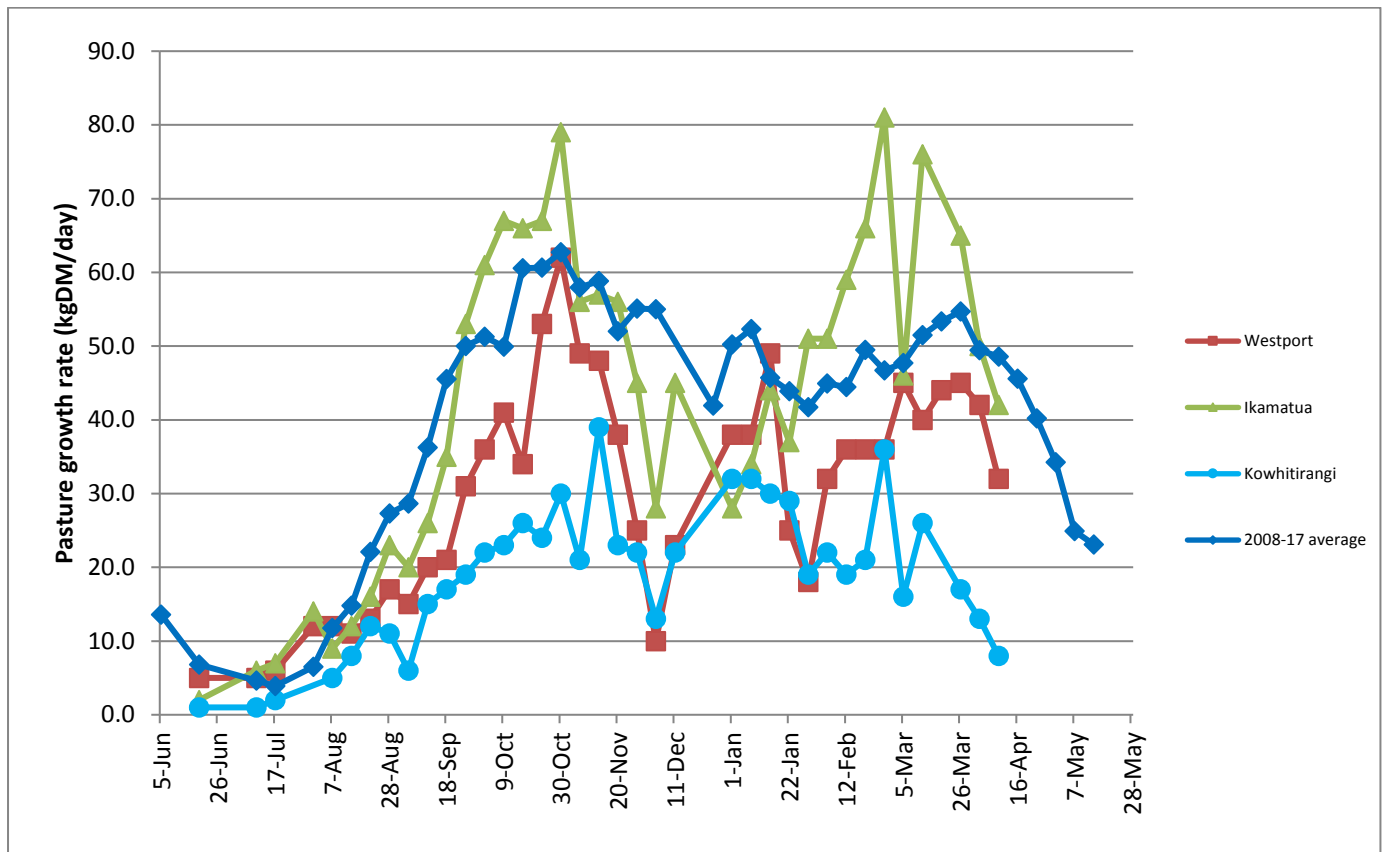
Farm Summary

	Westport	Ikamatua	Kowhitirangi
Average cover (kg DM/ha)	1969	2005	1788
APC (11 April)	2029	2037	1855
Rotation length (days)	23	24	
Stocking rate	2.4	2.5	
Percentage in milk	81	96	
Milksolids kg/cow	1.09	1.69	
Milksolids kg/ha	2.6	3.8	
MS/cow (season to date)	349	433	
MS/ha (season to date)	1020	1165	
N (kg/ha) year to date	170	181	88
Current N application rate kg N/ha	20	30	

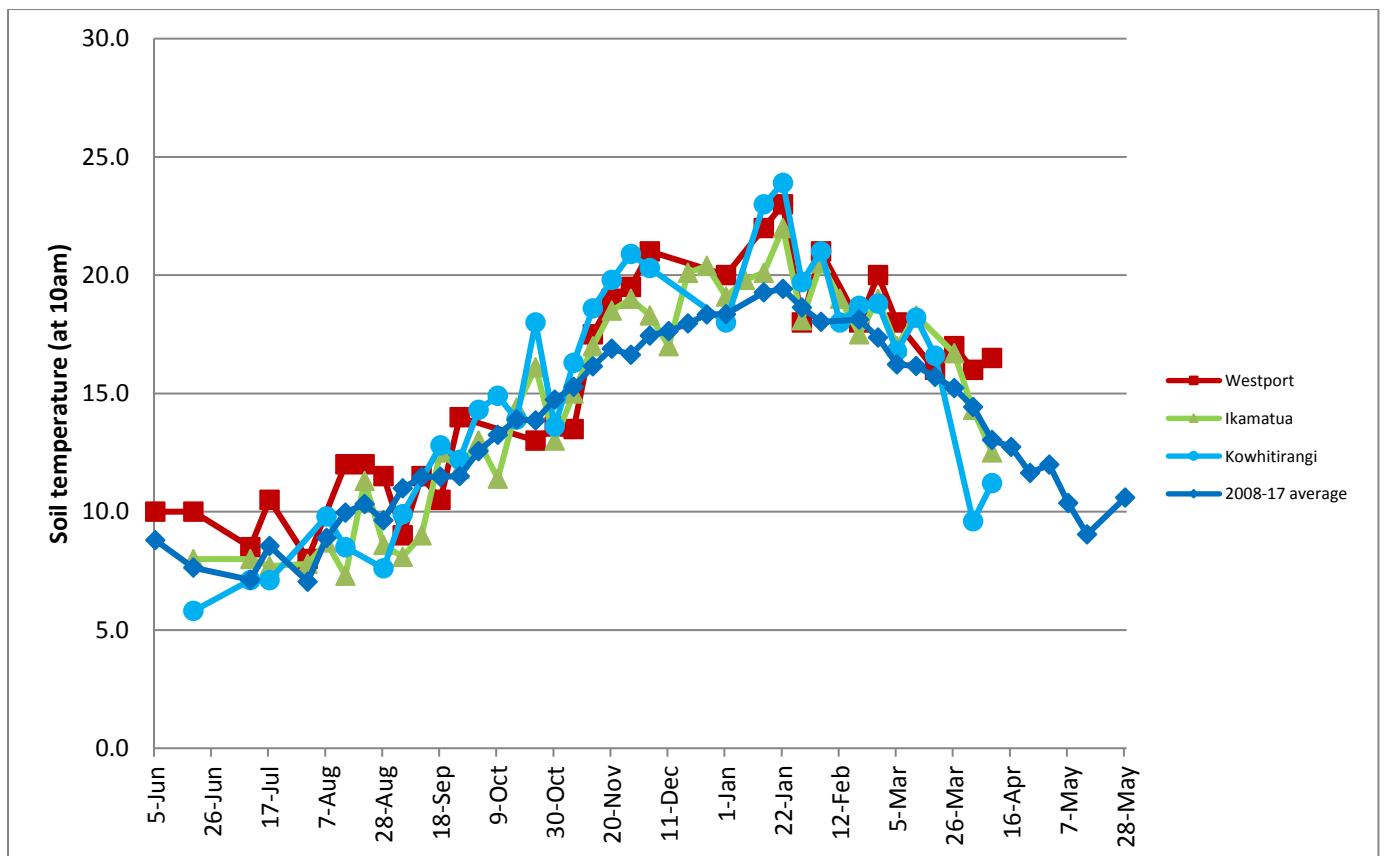
	2 April	3 April	4 April
DM%	16.9	12.9	10.7
Pasture ME	>12.7	12.3	>12.7
Pasture NDF	45.4	44.4	39.4
Pasture CP	26.3	32.2	29.5
Target Intake (kg DM/cow/d)	18	18	
Supplement (kg/cow/day)	2.5	4	
Soil temperature (°C)	16.5	12.5	11.2
Growth Rate (kg DM/day)	32	42	8
Rainfall	63	105	
Conditions for farmwalk	Shocking day; torrential rain, thunder and lightening	All farms affected this week with frosts, low snow, high winds and high rainfalls	Fine warm day; Farm very wet, been a lot of rain.
Comments			

NB: pasture quality data are for 1 sample collected from each farm

Weekly Pasture Growth Rates

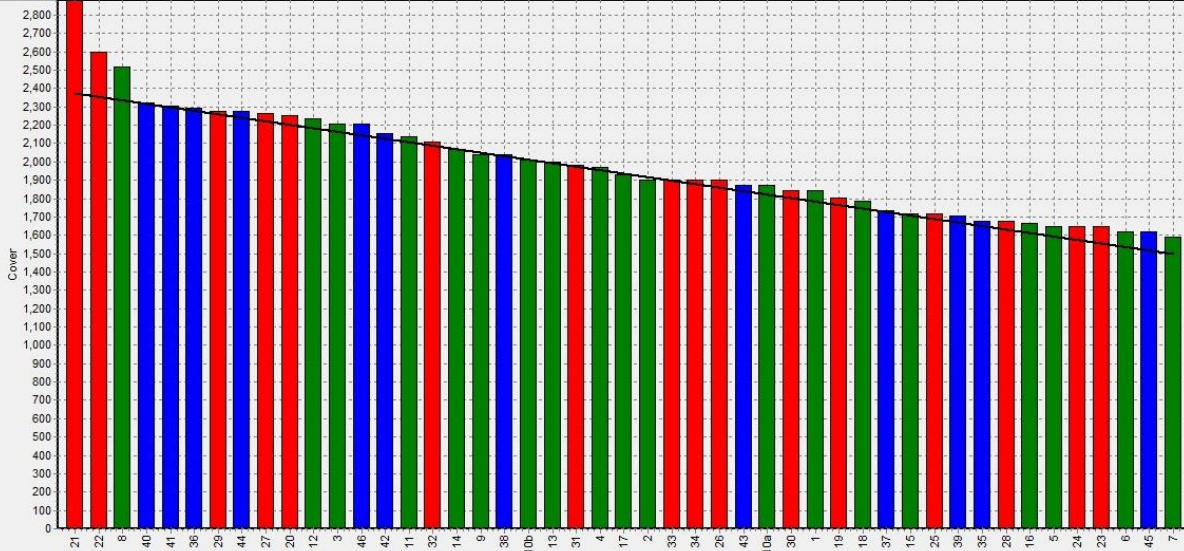


Weekly Soil Temperature



Westport

Farm Name: ADRIAN & CHERYL GALLAGHER
 Date Read :- 16/04/2018
 Average Cover :- 1969 Kg DM/Ha
 Average Growth :- 32 Kg DM/Ha/Day

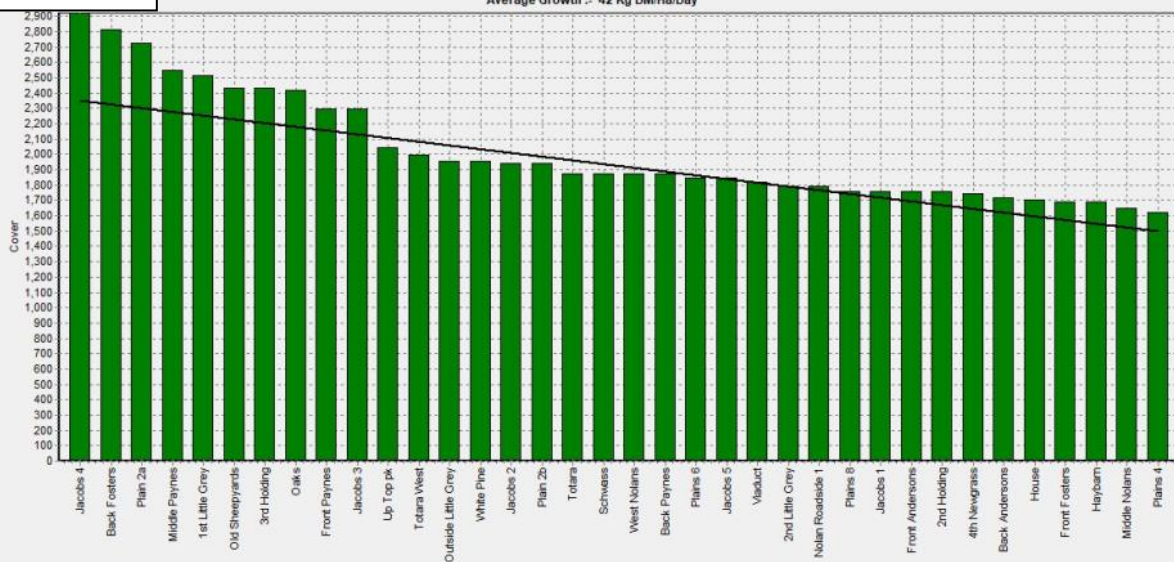


- Block 1
- Block 2
- Block 3
- Grazing Window



Ikamatua

Farm Name: ANDREW_NIKI_MIRFIN
 Date Read :- 17/04/2018
 Average Cover :- 2005 Kg DM/Ha
 Average Growth :- 42 Kg DM/Ha/Day

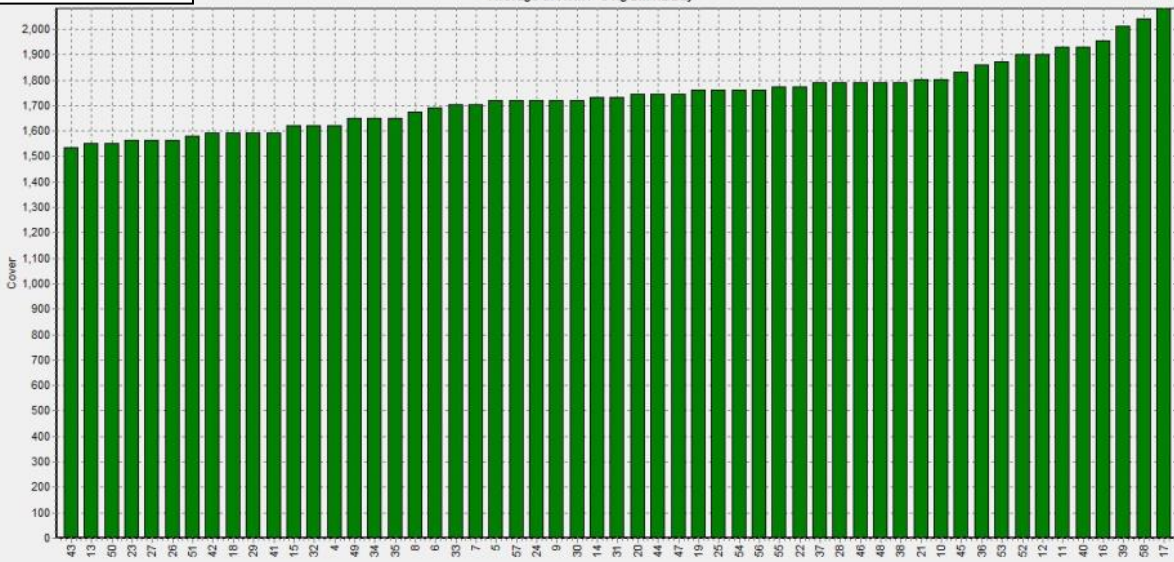


- Block 1
- Grazing Window



Kowhitirangi

Farm Name: TANE & RACHEL LITTLE
 Date Read :- 18/04/2018
 Average Cover :- 1788 Kg DM/Ha
 Average Growth :- 8 Kg DM/Ha/Day



- Block 1
- Grazing Window



