

Westland Monitor Farm Project

Weekly Update as at week ending Wednesday 2 May 2018

CO comment

For many farms the focus is on restoring BCS and feed cover targets for next calving. There have been some poorer reproduction and production results in the region for the 17-18 season which reflect the difficulty in getting cows to target BCS during last autumn and winter, and then the difficulty maintaining high intakes during the wet spring.

Be careful not to be tempted into milking on longer and losing the opportunity to gain some valuable body condition score that will contribute to longer term goals. If you have made the decision to milk on, then be strategic with which cows this is done with.

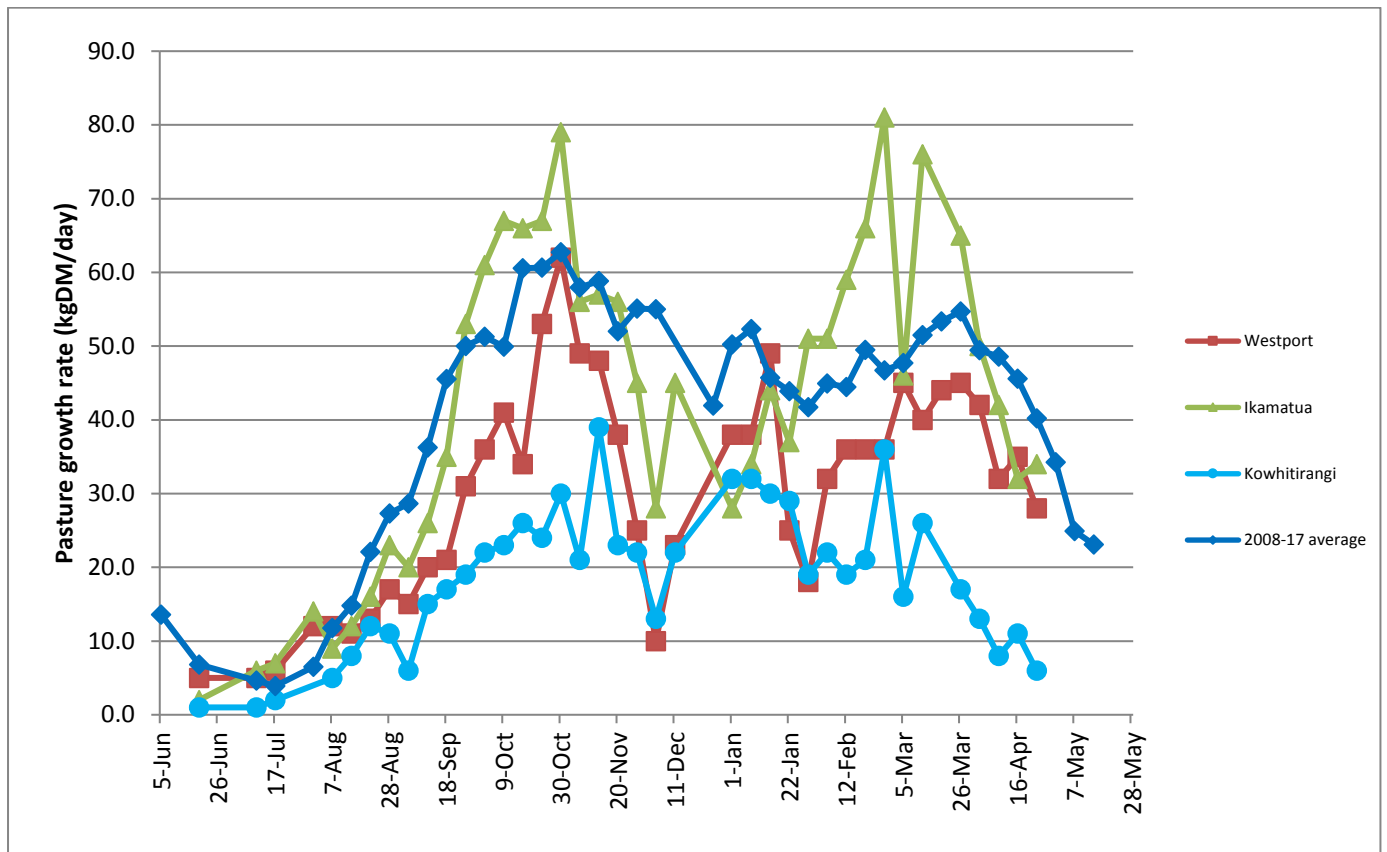
As the season draws to a close, it is time to reflect on the strengths and weaknesses of your farm business. To assist this process DairyNZ has developed Farm Gauge. Use this to help find where your time and resources are best invested in your business. Answer 10-20 multi-choice questions to determine how well you are doing in a category. Then choose a focus area and discover options to lift performance. <http://www.dairynz.co.nz/farm-gauge/>

Farm Summary

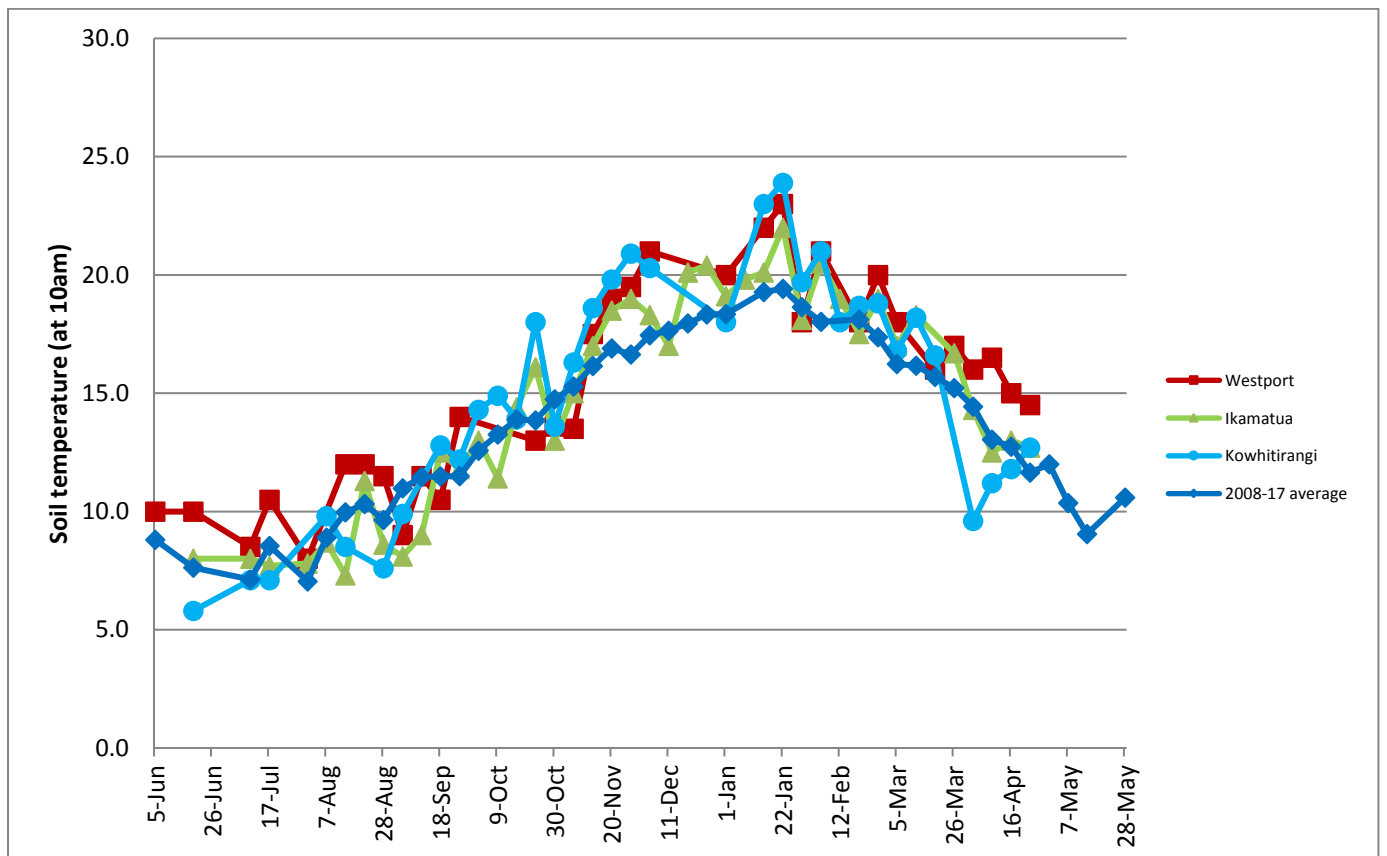
	Westport	Ikamatua	Kowhitirangi
Average cover (kg DM/ha)	1973	1940	1730
APC (25 April)	2013	1908	1765
Rotation length (days)	30	25	26
Stocking rate	2.3	2.25	1.92
Percentage in milk	79.0	86.0	77.0
Milksolids kg/cow	1.15	1.71	1.00
Milksolids kg/ha	2.6	3.4	1.8
MS/cow (season to date)	359	451	326
MS/ha (season to date)	1051	1213	778
N (kg/ha) year to date	181	180	88
Current N application rate kg N/ha	20	30	None
	2 April	3 April	4 April
DM%	16.9	12.9	10.7
Pasture ME	>12.7	12.3	>12.7
Pasture NDF	45.4	44.4	39.4
Pasture CP	26.3	32.2	29.5
Target Intake (kg DM/cow/d)	18	16	16
Supplement (kg/cow/day)	2.6	5	3
Soil temperature (°C)	14.5	12.7	12.7
Growth Rate (kg DM/day)	28	34	6
Rainfall	31	79	139
Conditions for farmwalk	Heavy rain	Beautiful warm fine day	Beautiful warm fine day
Comments			

NB: pasture quality data are for 1 sample collected from each farm

Weekly Pasture Growth Rates

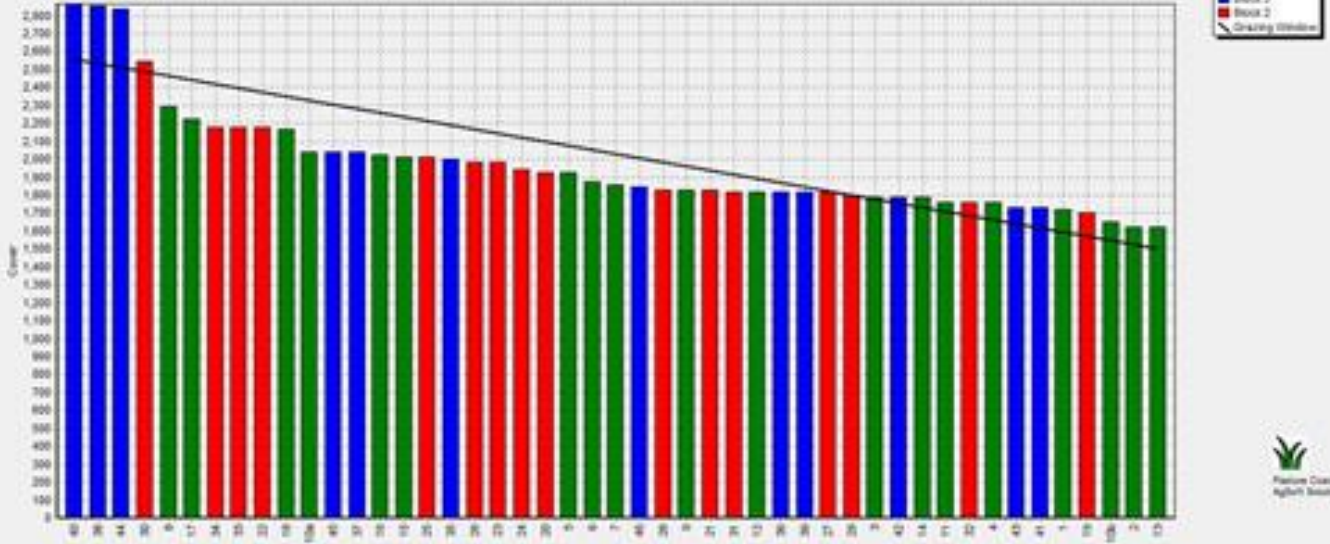


Weekly Soil Temperature



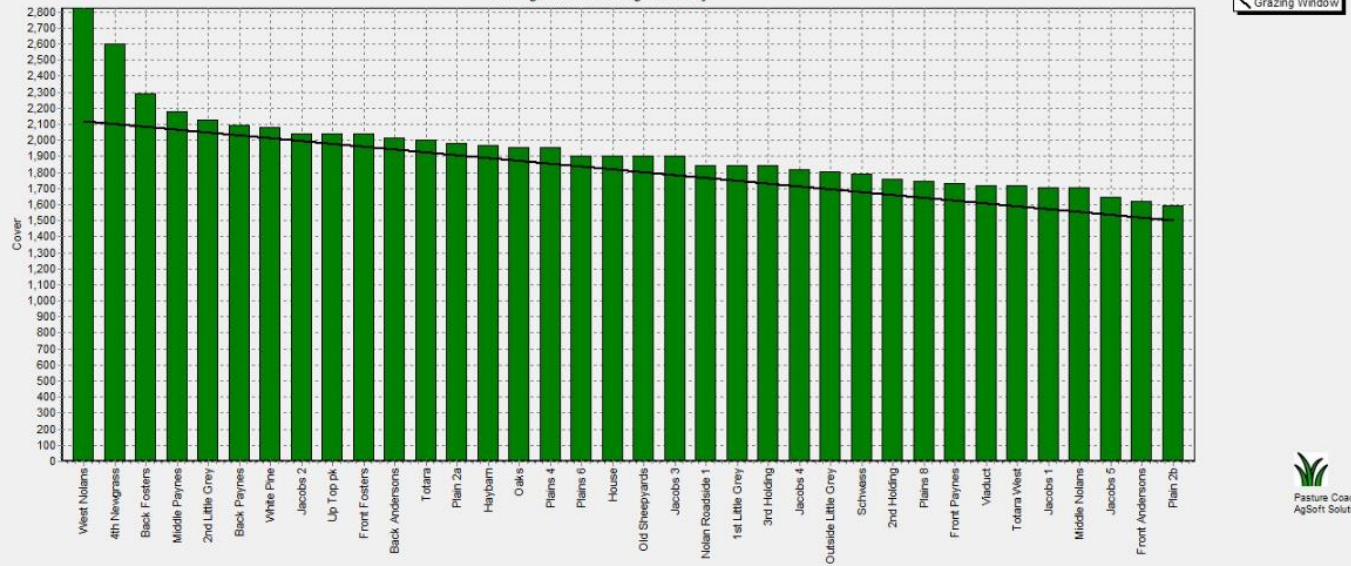
Westport

Farm Name: ADRIAN & CHERYL GALLAGHER
 Date Read : 30/04/2018
 Average Cover : 1973 Kg DM/Ha
 Average Growth : 28 Kg DM/Ha/Day



Ikamatua

Farm Name: ANDREW NIKI MIRFIN
 Date Read : 1/05/2018
 Average Cover : 1940 Kg DM/Ha
 Average Growth : 34 Kg DM/Ha/Day



Kowhitirangi

Farm Name: TANE & RACHEL LITTLE
 Date Read : 2/05/2018
 Average Cover : 1730 Kg DM/Ha
 Average Growth : 6 Kg DM/Ha/Day

