

# Westland Monitor Farm Project

Weekly Update 21 September 2017

## CO comment

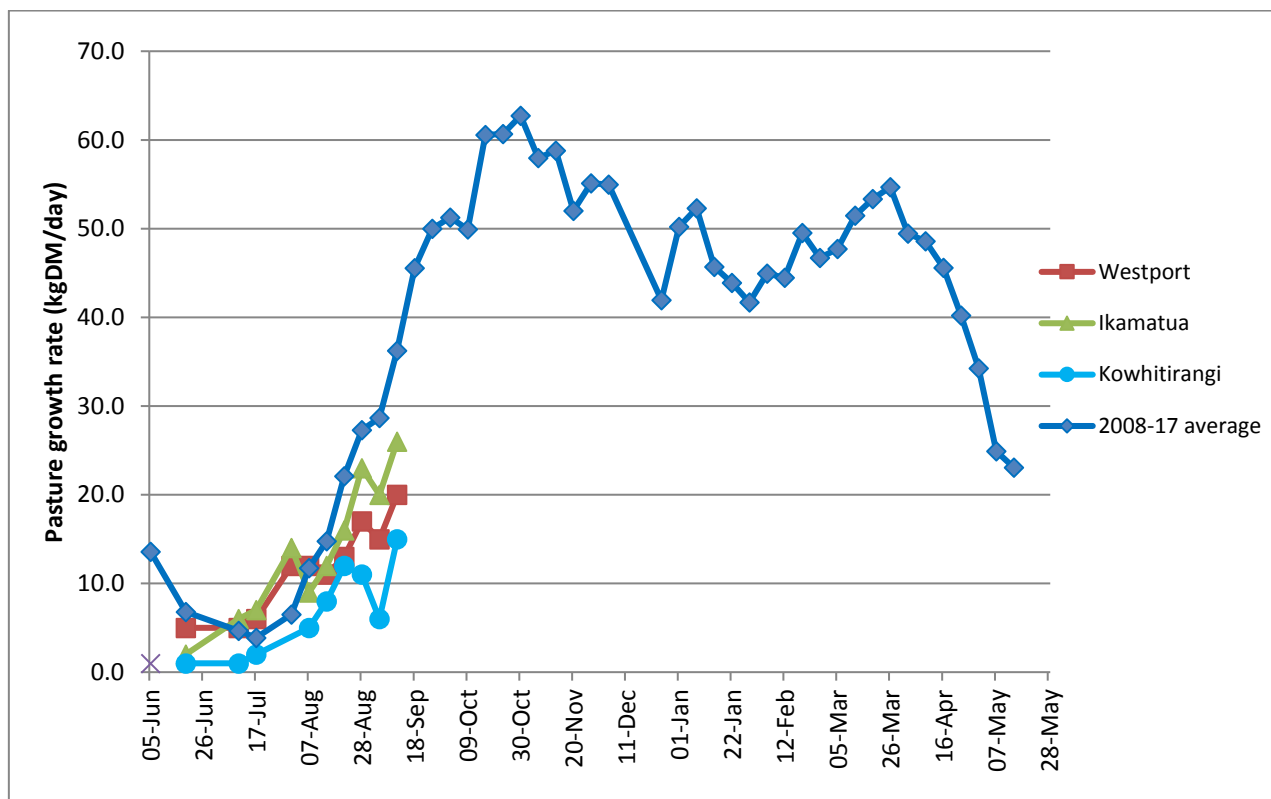
Mating is around the corner, so it is time to develop and implement an efficient heat detection policy for your farm. Farmers who achieve good heat detection results use a combination of good observation and effective use of heat detection aids. Use the time between calving and mating to work on a heat detection policy for your farm. Tail painting cows 35 days before mating and identifying those cows that haven't cycled before mating starts are both strategies to minimise problems. For more details go to <https://www.dairynz.co.nz/animal/reproduction/heat-detection/> and access the tools and resources available on the website. There are trained InCalf advisers available on the West Coast – contact them if you have reproduction issues that you want to solve.

## Farm Summary

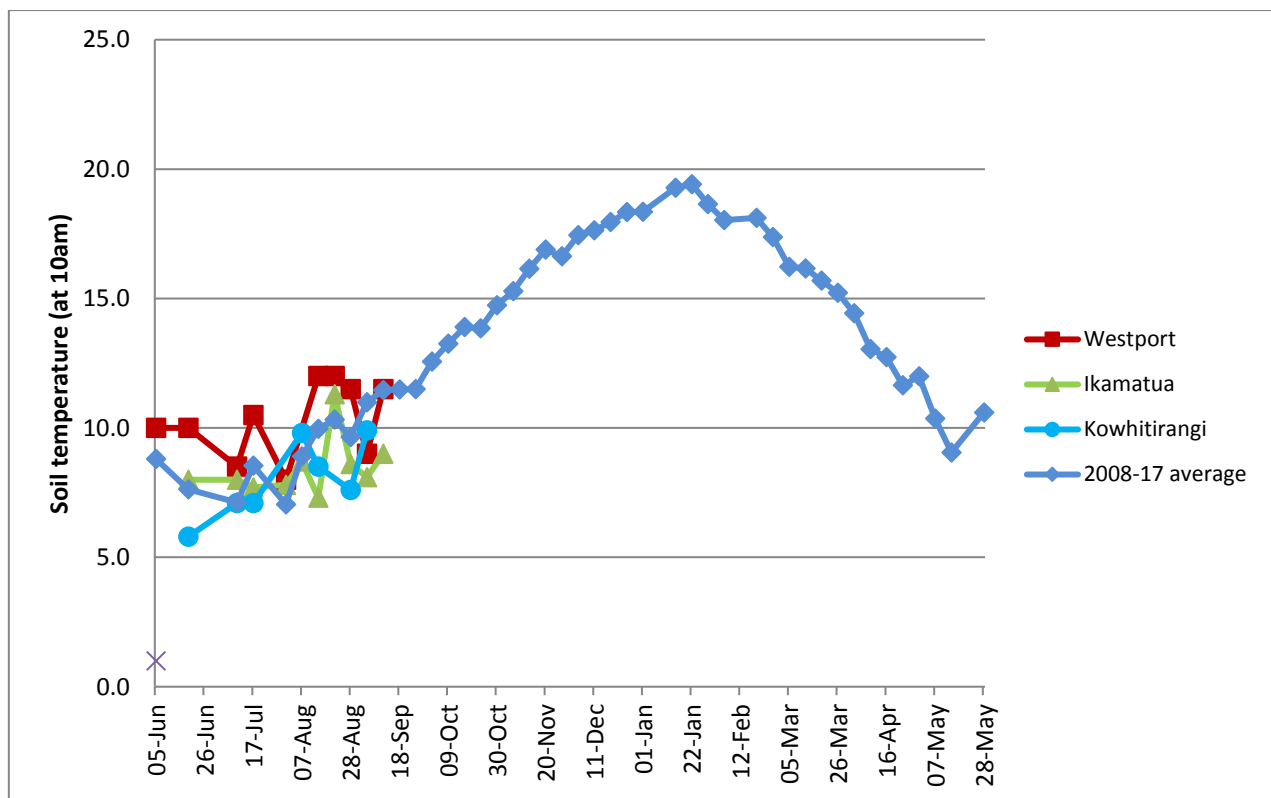
	Westport	Ikamatua	Kowhitirangi
Average cover (kg DM/ha)	1798	1969	1811
APC (14 September)	1820	1979	1736
Rotation length (days)	20	30	28
Stocking rate			
Percentage in milk	96	88	87
Milksolids kg/cow	1.66	1.98	1.64
Milksolids kg/ha	4.3	4.3	3.1
MS/cow (season to date)	34.6	44.2	23.0
MS/ha (season to date)	101.2	118.0	54.8
N (kg/ha) year to date	23	30	
Current N application rate kg N/ha	20	30	None
	4 Sep	5 Sep	6 Sep
DM%	15.4	15.7	15.4
Pasture ME	12.9	11.8	13.0
Pasture NDF	42.2	41.0	42.4
Pasture CP	31.9	25.0	23.6
Target Intake (kg DM/cow/d)	16-18	20	17
Supplement (kg/cow/day)	2.6	4.0	3.5
Soil temperature (°C)	11.5	9.0	
Growth Rate (kg DM/day)	20.0	26.0	15.0
Rainfall		114.0	82.0
Conditions for farmwalk			
Comments			

NB: pasture quality data are for 1 sample collected from each farm

### Weekly Pasture Growth Rates

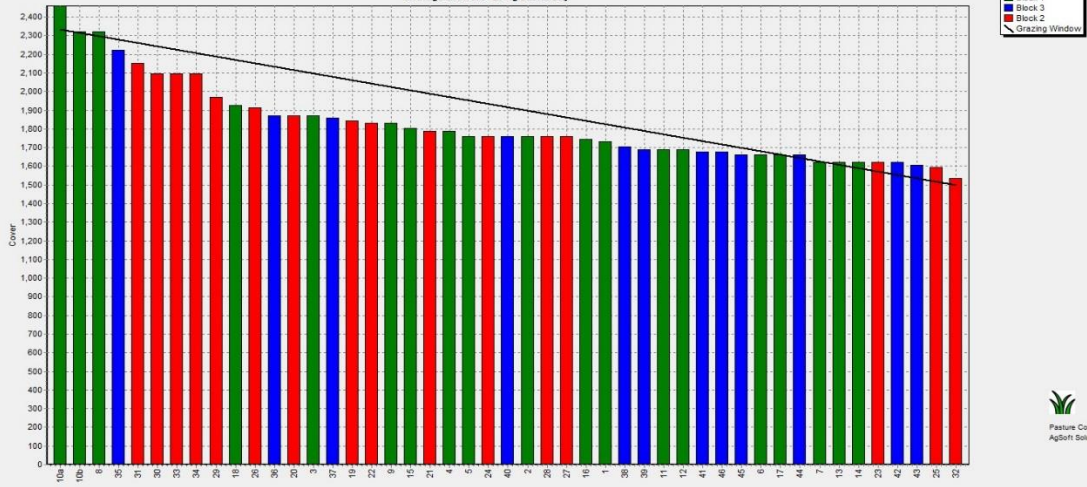


### Weekly Soil Temperature



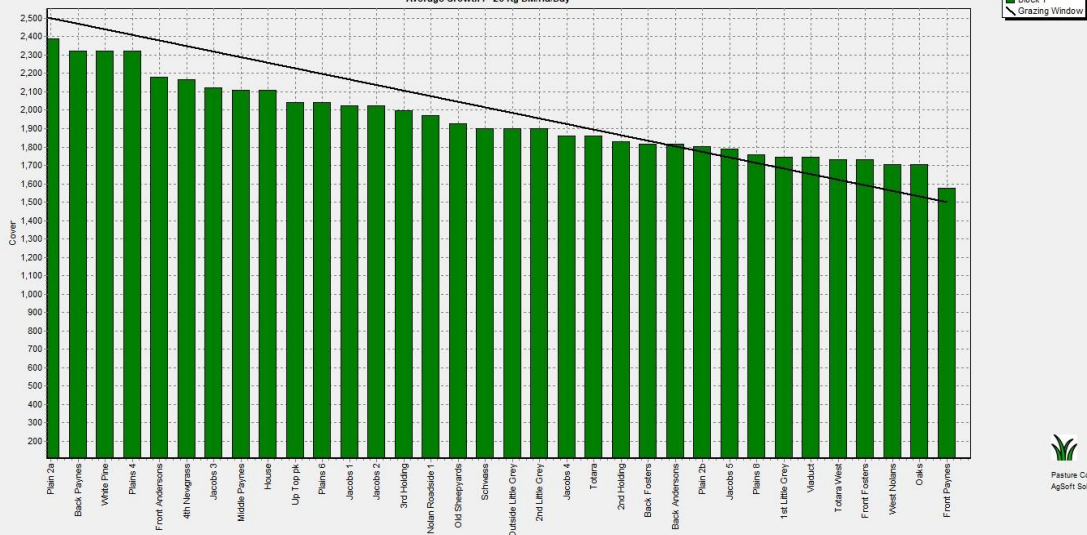
# Westport

Farm Name: ADRIAN & CHERYL GALLAGHER  
 Date Read : 18/09/2017  
 Average Cover : 1789 Kg DM/Ha  
 Average Growth : 20 Kg DM/Ha/Day



# Ikamatua

Farm Name: ANDREW\_NIKI\_MIRFIN  
 Date Read : 19/09/2017  
 Average Cover : 1969 Kg DM/Ha  
 Average Growth : 26 Kg DM/Ha/Day



# Kowhitirangi

Farm Name: TANE & RACHEL LITTLE  
 Date Read : 20/09/2017  
 Average Cover : 1811 Kg DM/Ha  
 Average Growth : 15 Kg DM/Ha/Day



Pasture Quality

NOTE: We sample the paddocks immediately in front of the milkers, to height of 3.5cm (7 clicks on the rising plate meter). The RPM data in the table is the pre-grazing clicks recorded on the day of sampling.

Westport

Description	Date	RPM	% DM	% Prot	% Lipid	% ADF	% NDF	Sol Sugar	OMD %	MJME /kg
42	5/6/2017	10.0	16.7	37.8	5.4	20.4	43.6	5.1	>85	>12.7
44	3/8/2017	14.8	20.0	27.3	5.2	22.9	46.4	8.0	84.6	12.4
4	4/9/2017		15.4	31.9	5.3	22.4	42.2	5.9	88.5	12.9

Ikamatua

Description	Date	RPM	% DM	% Prot	% Lipid	% ADF	% NDF	Sol Sugar	OMD %	MJME/kg
Haybarn	6/6/2017	14.8	16.3	29	5.4	19.6	37.4	12.7	>85	12.7
Totara east	3/8/2017	10.3	15.7	26.9	5.1	20.2	35.8	16.7	>85	>12.7
Totara west	3/8/2017	10.9	17.4	24.4	5.1	20.8	37.2	19.9	>85	>12.7
Plain 5	3/8/2017	12.2	17.3	24.5	4.7	20.5	41.4	16.7	>85	>12.7
Viaduct	3/8/2017	13.6	16.4	22.8	4.6	21.8	37.9	21.3	>85	>12.7
Mid-Payne	3/8/2017	15.8	16.7	22.2	4.7	23.7	41	16.1	80.8	11.8
Jacobs 2	3/8/2017	10.3	16.7	27	5.5	21.1	38	13.6	>85	12.5
Front Payne	5/9/2017		15.7	25.0	5.0	26.4	41.0	8.6	81.1	11.8

Kowhitirangi

Description	Date	RPM	% DM	% Prot	% Lipid	% ADF	% NDF	Sol Sugar	OMD %	MJME/kg
6	7/6/2017	10.1	15	24.2	5	18.8	34.9	18.8	>85	>12.7
10	3/8/2017	10.7	17.6	21.0	4,7	25.2	44.8	15.4	80.9	11.6
21	6/9/2017		15.4	23.6	3.8	22.8	42.4	14.3	89.1	13.0

--	--	--	--	--	--	--	--	--	--	--