

Westland Monitor Farm Project

Weekly Update as at week ending Wednesday 23 May 2018

CO comment

All known or suspect *M. bovis* infected properties are under Restricted Place Notices under the Biosecurity Act and cattle cannot be moved (except to slaughter).

It's still possible that some unknown infected cattle are about, and they usually don't show symptoms. This is one reason caution and good practice is needed for any cattle movement. Another reason already exists, as it's expected standard practice in today's environment. As moving day approaches and you plan cattle movement to a new location, focus on preventing contact with cattle from other herds at those locations. Ensure that any grazing, or new property has good biosecurity measures in place, such as preventing your stock from having nose to nose contact with cattle on the farm or neighbouring properties. *M. bovis* is not just a dairy industry problem and this includes all cattle.

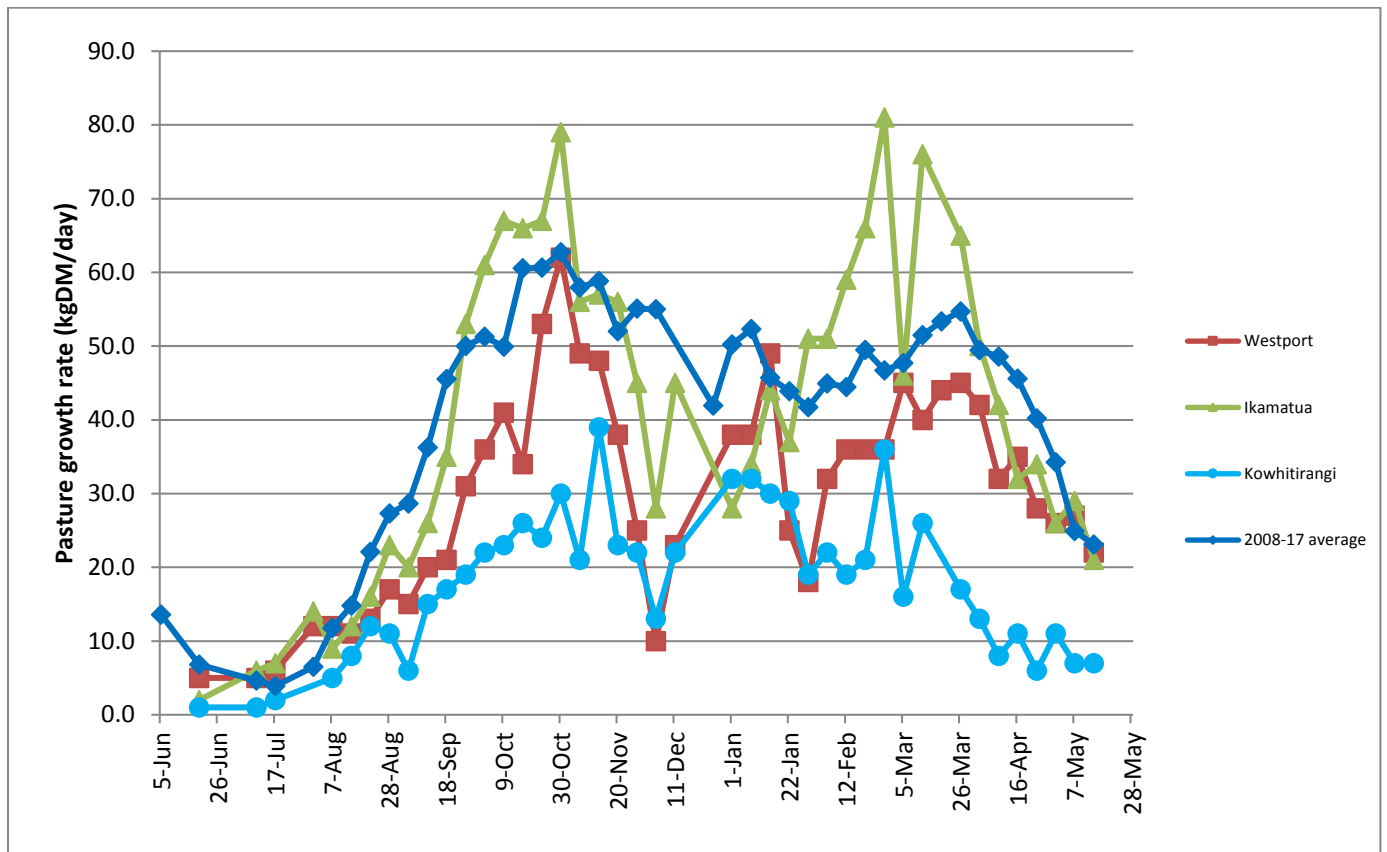
Find out more at <http://www.dairynz.co.nz/animal/cow-health/mycoplasma-bovis/>

Farm Summary

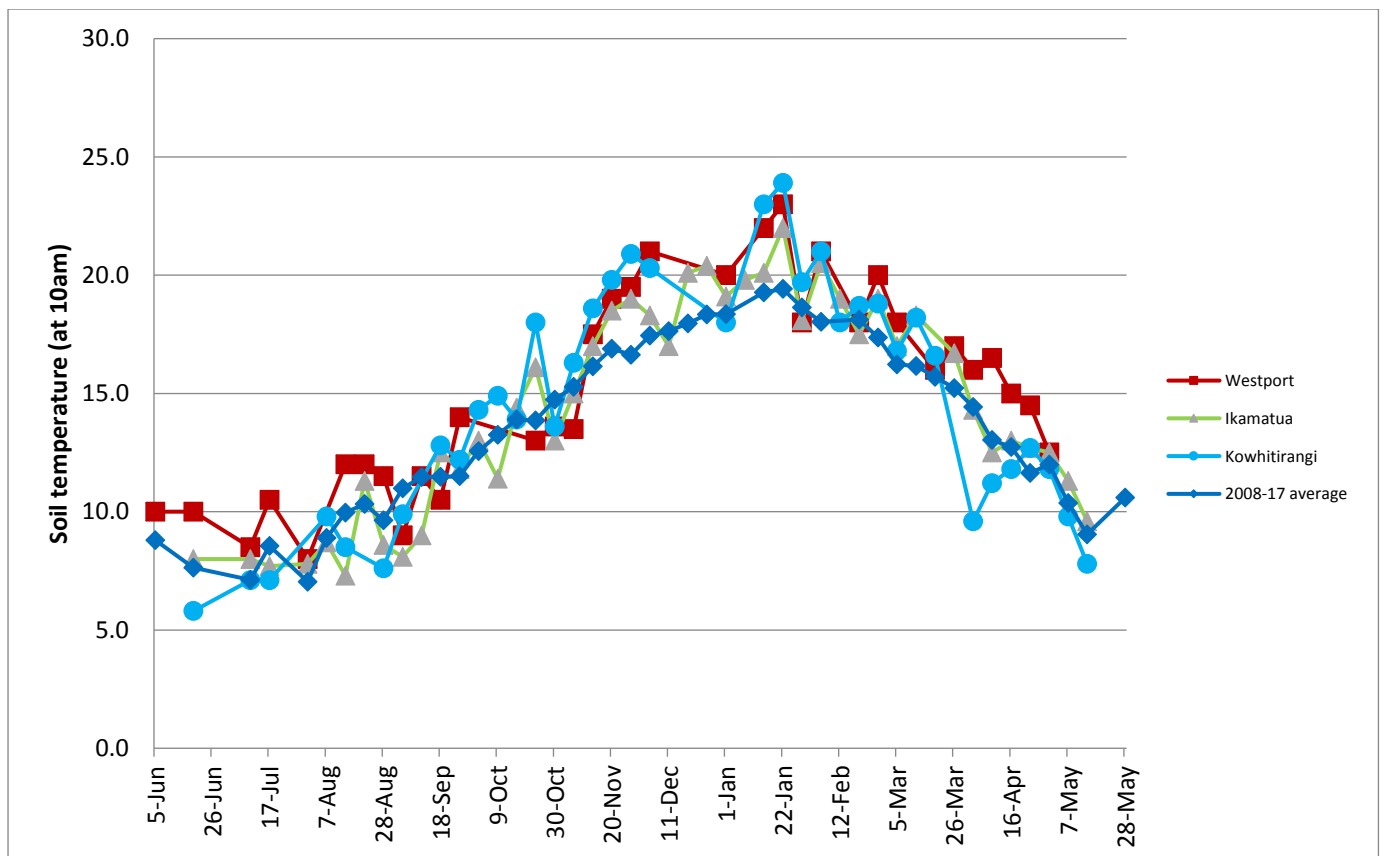
	Westport	Ikamatua	Kowhitirangi
Average cover (kg DM/ha)	1968	2014	1741
APC (16 May)	1955	1943	1727
Rotation length (days)	38	35	
Stocking rate	2.0		
Percentage in milk	67.0		
Milksolids kg/cow	1.01		
Milksolids kg/ha	2.0		
MS/cow (season to date)	373	465	
MS/ha (season to date)	1090	1251	
N (kg/ha) year to date	193	218	88
Current N application rate kg N/ha	20	35	
	7 May	8 May	
DM%	12.7	12.8	
Pasture ME	12.9	12.7	
Pasture NDF	46.2	42.6	
Pasture CP	32.7	28.9	
Target Intake (kg DM/cow/d)	17	15	
Supplement (kg/cow/day)	2.75		
Soil temperature (°C)		9.6	7.8
Growth Rate (kg DM/day)	22	21	7
Rainfall	82	90	
Conditions for farmwalk	Heavy rain; cold	Heavy rain; Very cold; Cows dried off	Freezing cold; Snow low on mountains; Farm very wet; Cows dried off and on crop
Comments			

NB: pasture quality data are for 1 sample collected from each farm

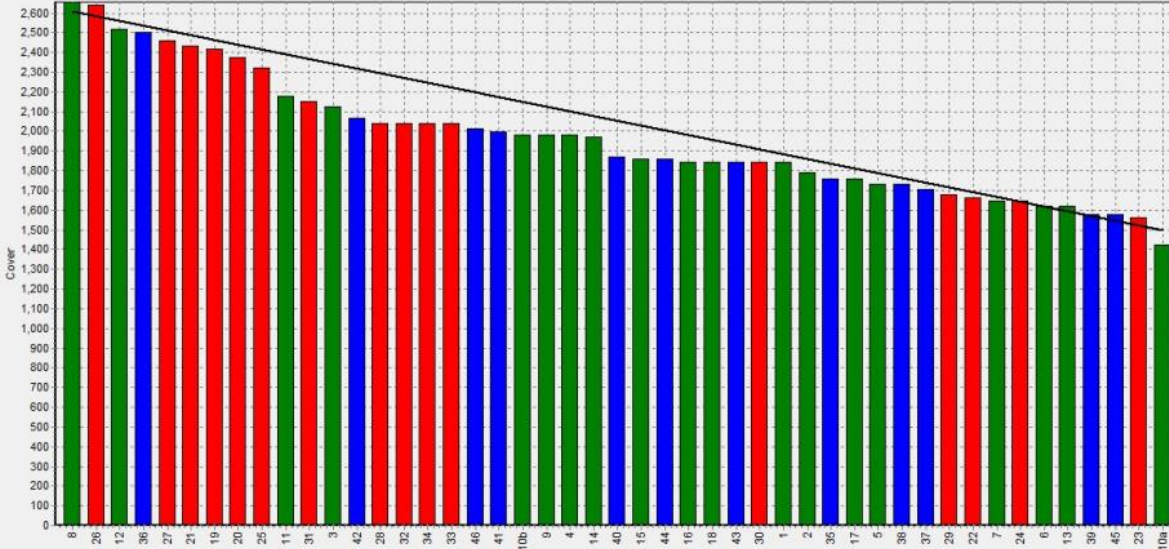
Weekly Pasture Growth Rates



Weekly Soil Temperature



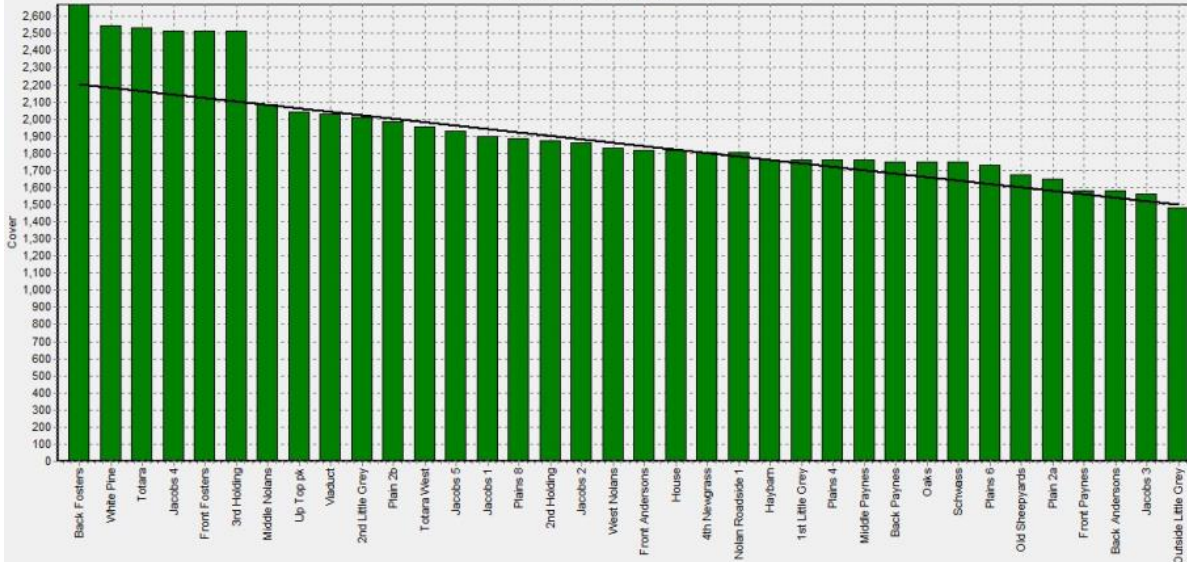
Farm Name:- ADRIAN & CHERYL GALLAGHER
 Date Read :- 14/05/2018
 Average Cover :- 1955 Kg DM/Ha
 Average Growth :- 27 Kg DM/Ha/Day



Block 1
 Block 2
 Block 3
 Grazing Window



Farm Name:- ANDREW_NIKI_MIRFIN
 Date Read :- 15/05/2018
 Average Cover :- 1943 Kg DM/Ha
 Average Growth :- 29 Kg DM/Ha/Day



Block 1
 Grazing Window



Farm Name:- TANE & RACHEL LITTLE
 Date Read :- 16/05/2018
 Average Cover :- 1727 Kg DM/Ha
 Average Growth :- 7 Kg DM/Ha/Day



Block 1
 Grazing Window



