

Westland Monitor Farm Project

Weekly Update 26 October 2017

CO comment

Little sign of surplus grass as yet, but its quick identification remains important.

Mating management with a restricted budget reinforces the importance of heat detection. Retaining the calving pattern and the fertility of the herd for future years is an important part of regaining momentum as milk price lifts. Mating management should be business as usual with little to be gained from making “cuts”. In some cases, where calving pattern targets have not been met, doing more than usual is probably required. Most of the investment is time, not cash. Have simple systems in place, with people clear about their roles and actions required. Alterations such as once a day milking, or 3 milkings in 2 days, need to be handled with care as they can disrupt heat detection routines and timing of insemination in relation to standing heat. The evidence that **short term** reductions in milking frequency enhance fertility is not strong.

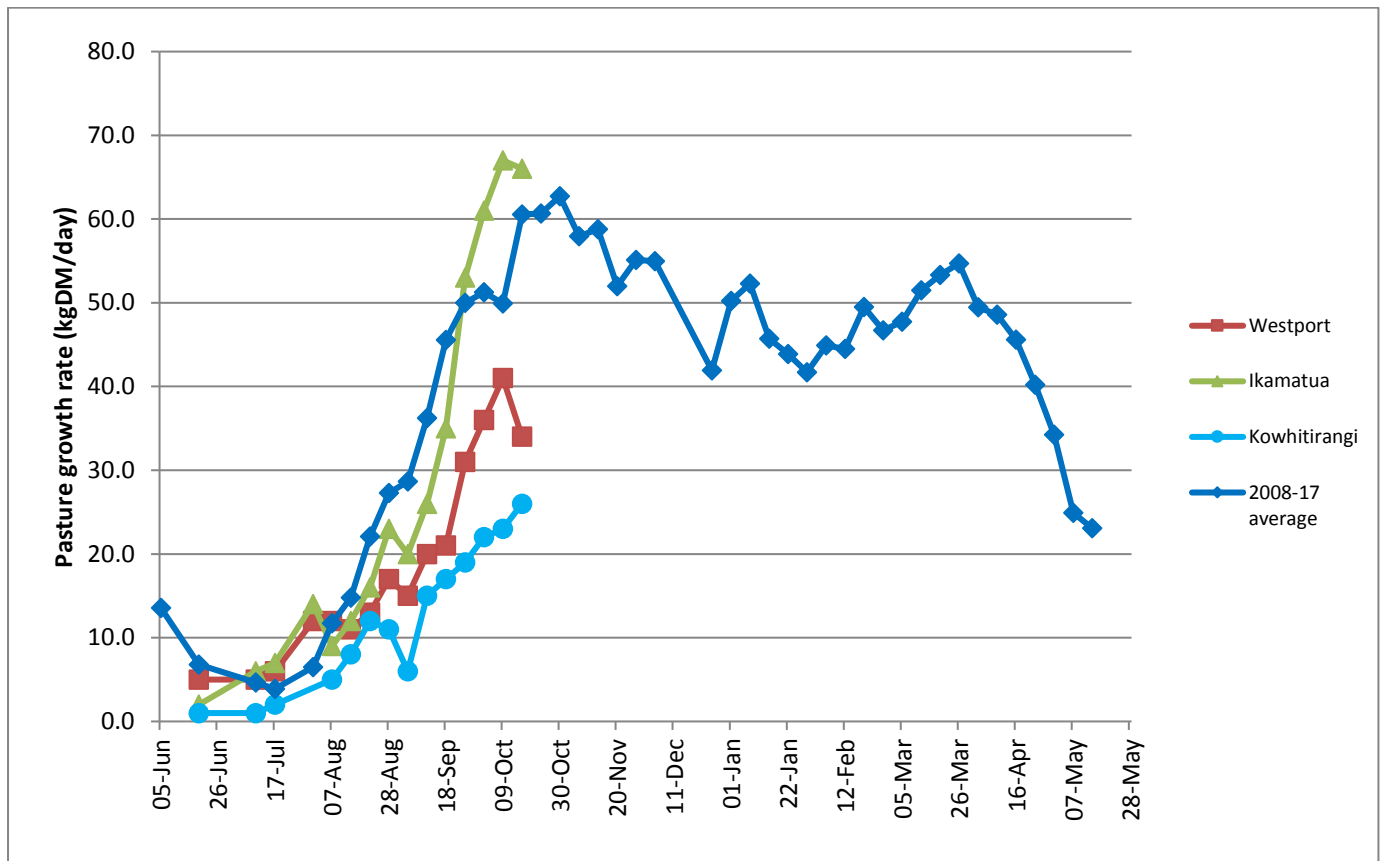
If proceeding with a synchrony programme and a group of animals has been identified to receive treatment, draught them out and get a couple of sets of eyes over them as you may have missed some of the subtle signs of pre mating heat due to wet weather conditions.

Farm Summary

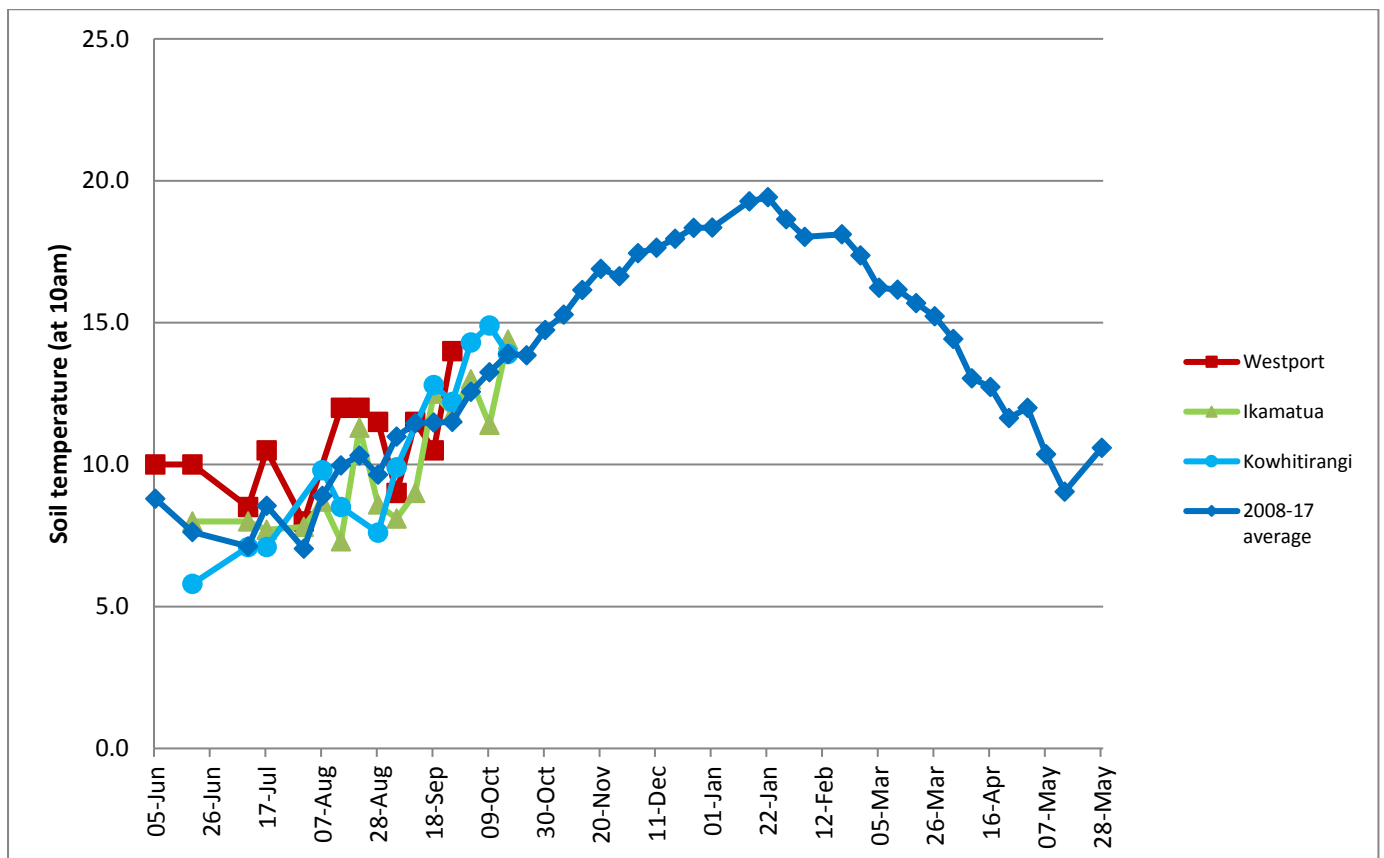
	Westport	Ikamatua	Kowhitirangi
Average cover (kg DM/ha)	1916	2036	1861
APC (20 October)	1896	2145	1863
Rotation length (days)	17.5	20	26
Stocking rate	2.8	2.6	2.3
Percentage in milk	100	100	100
Milksolids kg/cow	1.94	2.14	1.88
Milksolids kg/ha	3.7	5.6	4.3
MS/cow (season to date)	83.5	109.9	70.4
MS/ha (season to date)	244	301	168
N (kg/ha) year to date	49	63	60
Current N application rate kg N/ha	20	30	None
	3 Oct	4 Oct	5 Oct
DM%	11.8	13.0	13.8
Pasture ME	>12.7	>12.7	>12.7
Pasture NDF	49.8	44.5	37.9
Pasture CP	30.1	29.0	21.5
Target Intake (kg DM/cow/d)	18	20	18
Supplement (kg/cow/day)	0.9	4.5	1.5
Soil temperature (°C)		14.4	13.9
Growth Rate (kg DM/day)	34	66	26
Rainfall		27	50
Conditions for farmwalk	Wet	Wet	Very wet
Comments			

NB: pasture quality data are for 1 sample collected from each farm

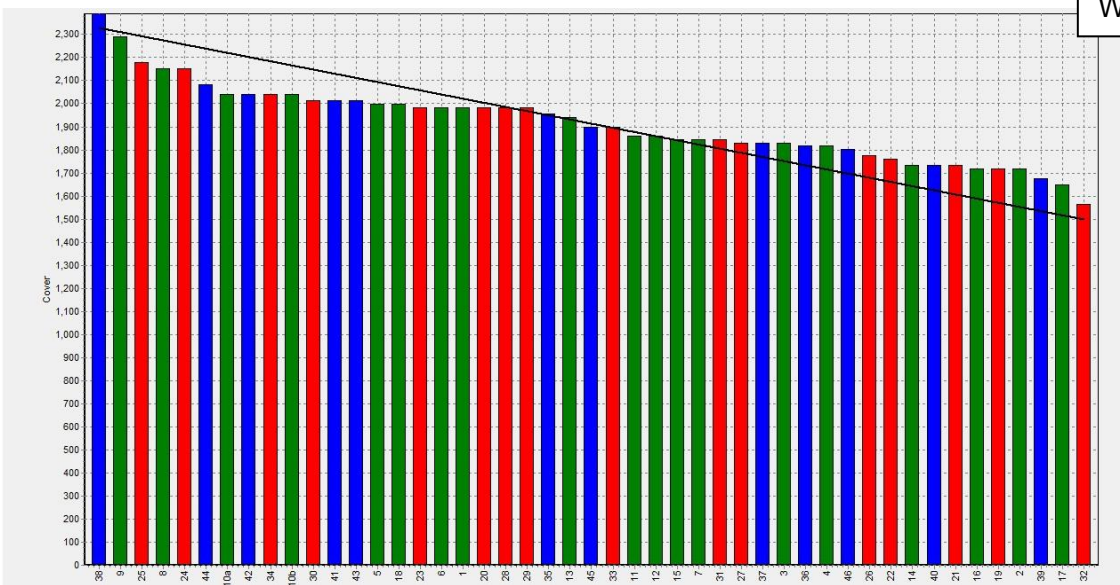
Weekly Pasture Growth Rates



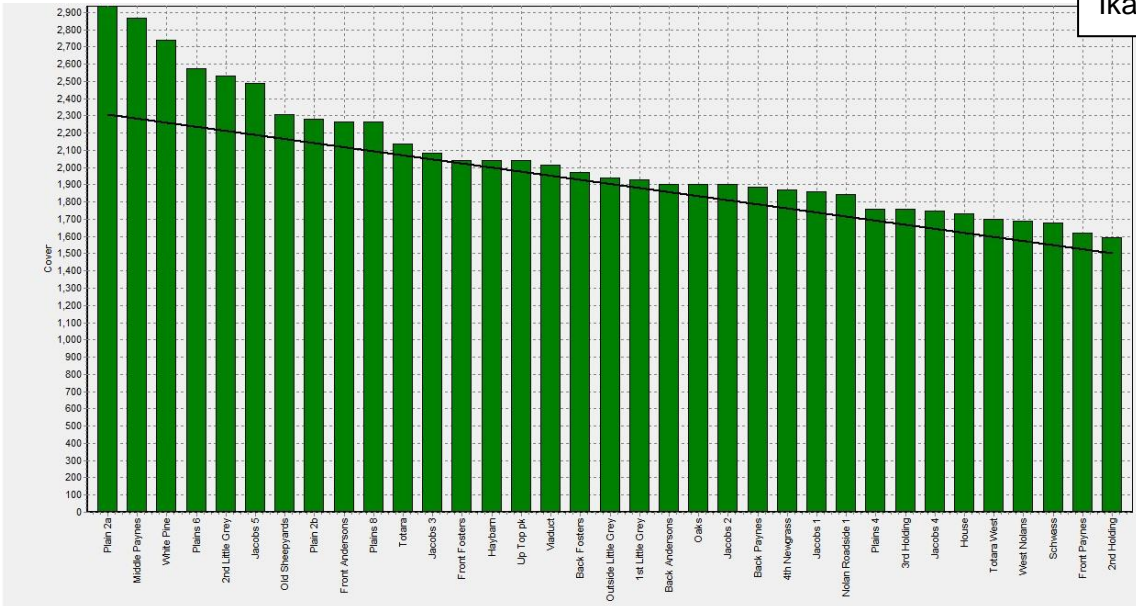
Weekly Soil Temperature



Westport



Ikamatua



Kowhitirangi



