

Westland Monitor Farm Project

Weekly Update 3 November 2017

CO comment

Pasture growth rates have been low on waterlogged soils but could change quickly with the warmer weather. If pasture cover remains low, it's tempting to speed up the rotation to improve feeding levels. The risk that accompanies this is that pasture growth is penalised by paddocks being grazed again too soon after the previous grazing. Fast rotations only work well when grass is growing well.

Expect the consequences of wet conditions and any resulting failures to achieve grazing residuals to show up over time. You will see elongated stems as plants change towards reproduction. Higher residuals lead to physically taller plants that have higher fibre levels and are less digestible.

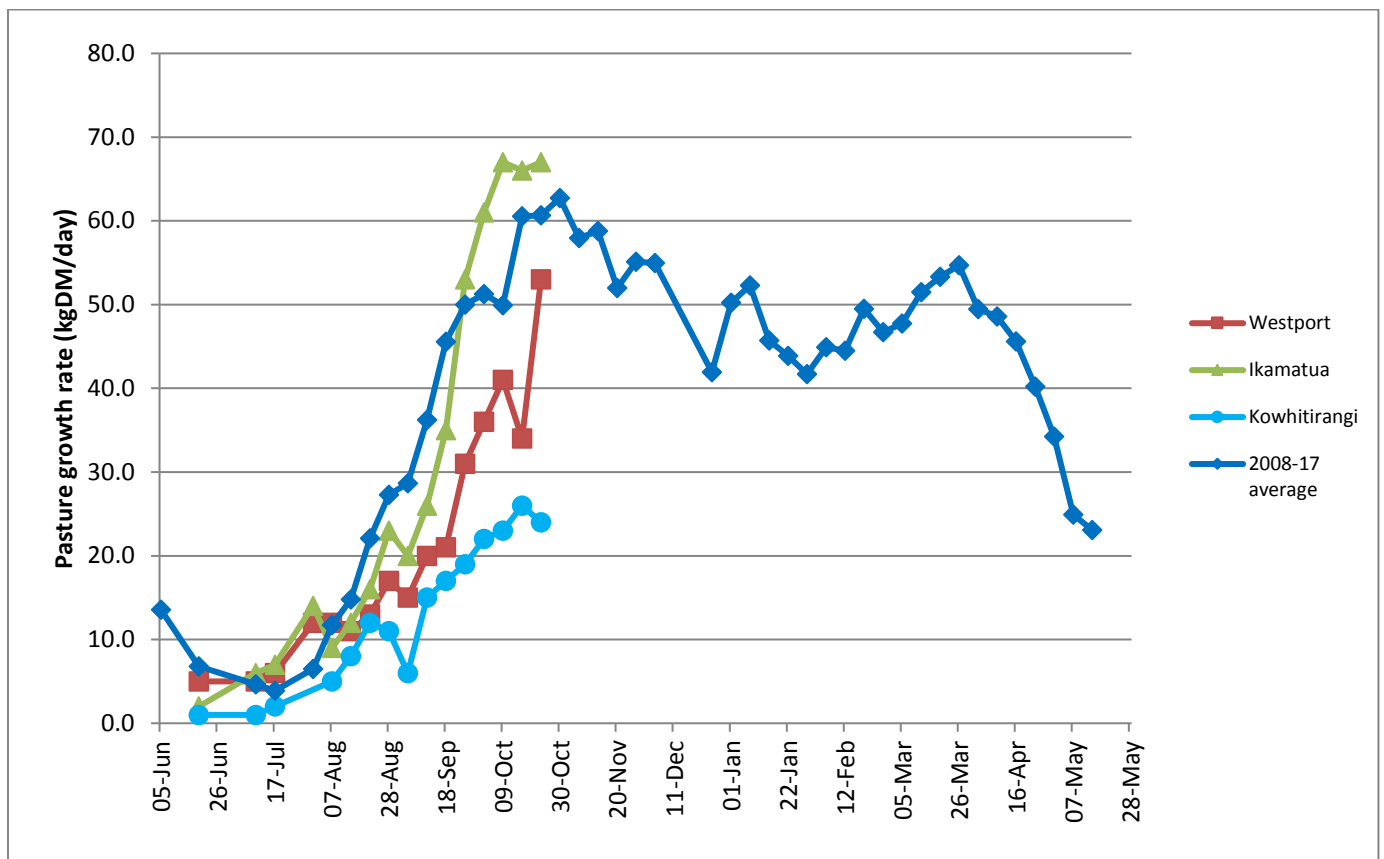
Herds with a lower than usual body condition score will potentially have lower than expected three-week submission rates. This means more than normal bull power will be required after AB finishes. One bull is required to be in the herd for every 30 non pregnant cows. A drop in submission rate by 10% from normal for 300 cows means one additional bull will need to be in the herd for natural mating compared to normal. Also review the bulls on hand to cover breakdowns where necessary. If bull numbers are locked in, consider continuing AB matings for longer than normal to reduce the pressure on bulls.

Farm Summary

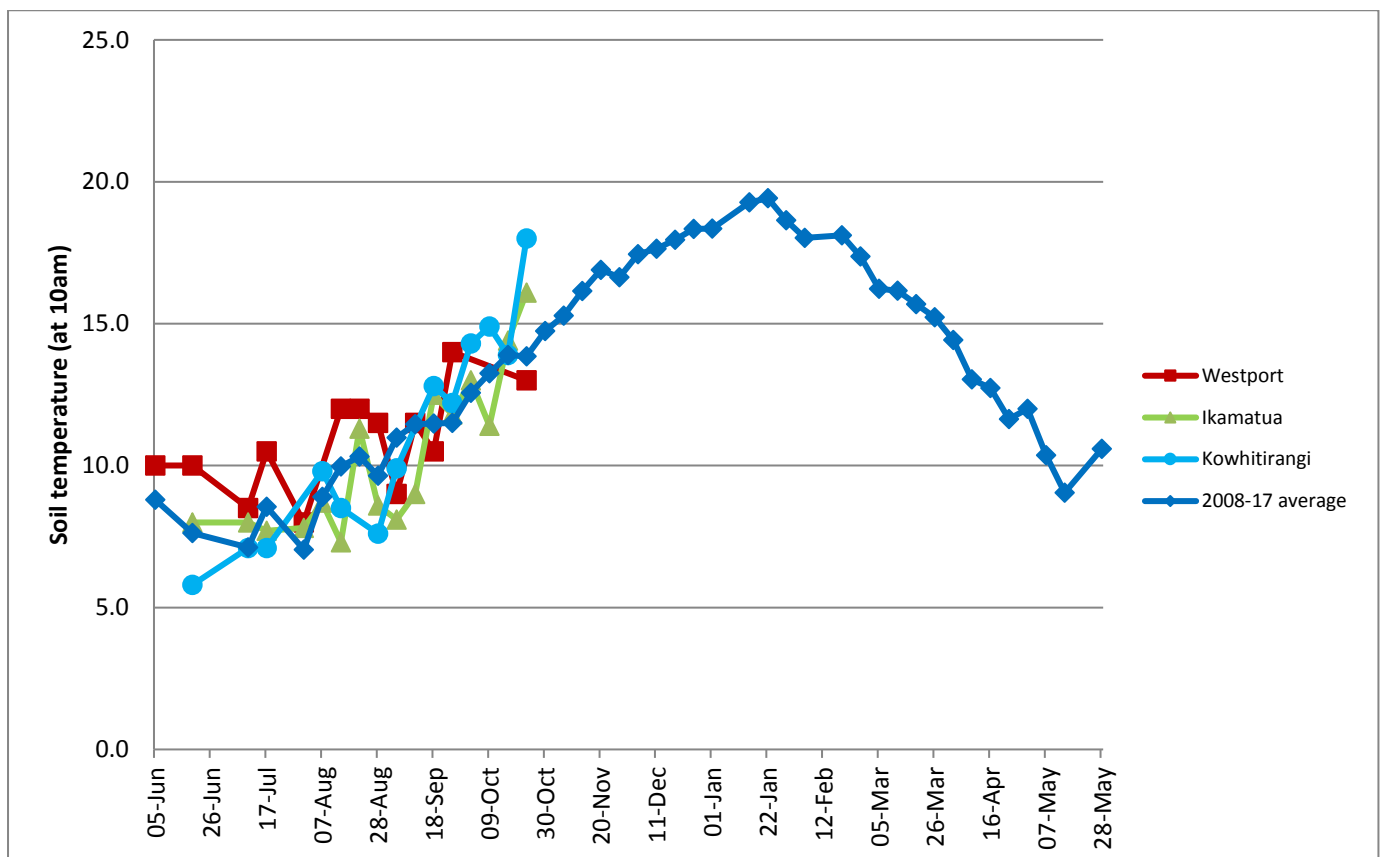
	Westport	Ikamatua	Kowhitirangi
Average cover (kg DM/ha)	2016	2113	1874
APC (26 October)	1916	2036	1861
Rotation length (days)	18	20	26
Stocking rate	2.9	2.7	2.4
Percentage in milk	100	100	100
Milksolids kg/cow	1.98	2.25	
Milksolids kg/ha	5.7	6.1	
MS/cow (season to date)	95.2	127.7	70.4
MS/ha (season to date)	279	344	168
N (kg/ha) year to date	53	68	60
Current N application rate kg N/ha	20	20	None
	3 Oct	4 Oct	5 Oct
DM%	11.8	13.0	13.8
Pasture ME	>12.7	>12.7	>12.7
Pasture NDF	49.8	44.5	37.9
Pasture CP	30.1	29.0	21.5
Target Intake (kg DM/cow/d)	18	20	
Supplement (kg/cow/day)	2.0	4.0	1.5
Soil temperature (°C)	13.0	16.1	18.0
Growth Rate (kg DM/day)	53	67	24
Rainfall	23	25	50
Conditions for farmwalk	Fine, warm	Fine, warm	Fine and hot
Comments			

NB: pasture quality data are for 1 sample collected from each farm

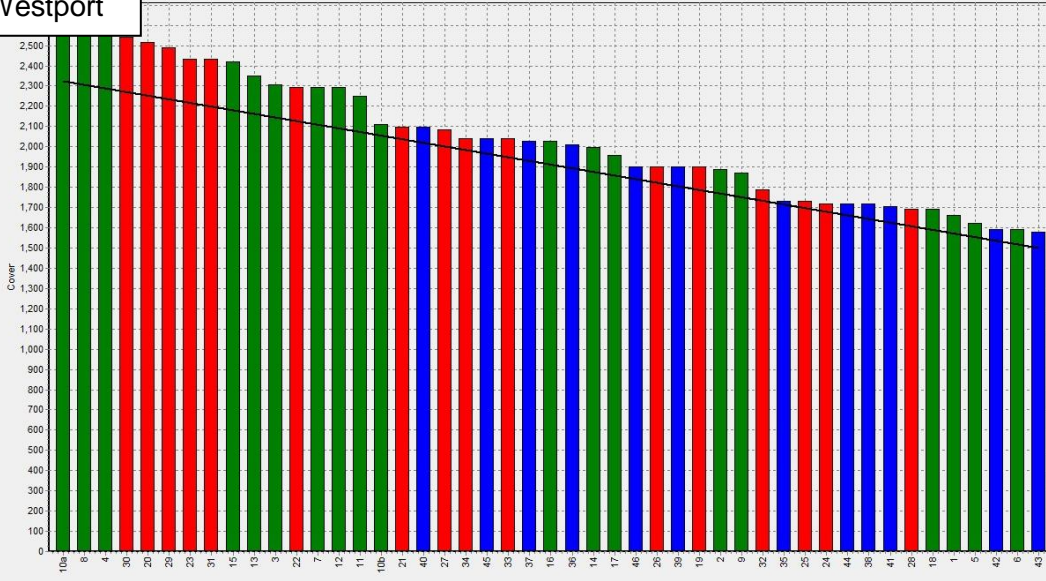
Weekly Pasture Growth Rates



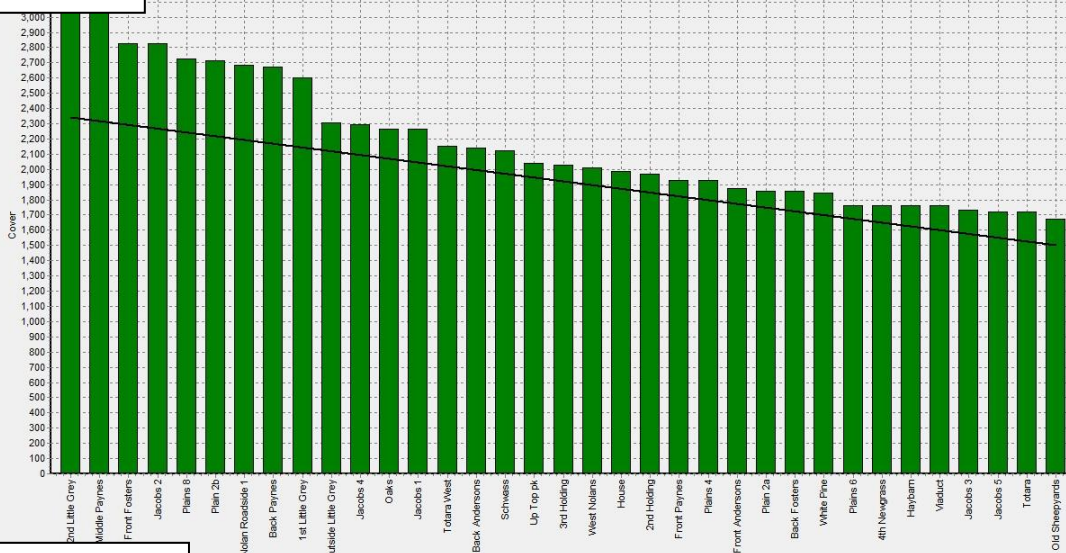
Weekly Soil Temperature



Westport



Ikamatua



Kowhitirangi



Pasture Quality

NOTE: We sample the paddocks immediately in front of the milkers, to height of 3.5cm (7 clicks on the rising plate meter). The RPM data in the table is the pre-grazing clicks recorded on the day of sampling.

Westport

Description	Date	RPM	% DM	% Prot	% Lipid	% ADF	% NDF	Sol Sugar	OMD %	MJME /kg
42	5/6/2017	10.0	16.7	37.8	5.4	20.4	43.6	5.1	>85	>12.7
44	3/8/2017	14.8	20.0	27.3	5.2	22.9	46.4	8.0	84.6	12.4
4	4/9/2017	10.3	15.4	31.9	5.3	22.4	42.2	5.9	88.5	12.9
26	3/10/2017	13.8	11.8	30.1	3.8	23.7	49.8	5.5	91.2	>12.7

Ikamatua

Description	Date	RPM	% DM	% Prot	% Lipid	% ADF	% NDF	Sol Sugar	OMD %	MJME/kg
Haybarn	6/6/2017	14.8	16.3	29	5.4	19.6	37.4	12.7	>85	12.7
Totara east	3/8/2017	10.3	15.7	26.9	5.1	20.2	35.8	16.7	>85	>12.7
Totara west	3/8/2017	10.9	17.4	24.4	5.1	20.8	37.2	19.9	>85	>12.7
Plain 5	3/8/2017	12.2	17.3	24.5	4.7	20.5	41.4	16.7	>85	>12.7
Viaduct	3/8/2017	13.6	16.4	22.8	4.6	21.8	37.9	21.3	>85	>12.7
Mid-Payne	3/8/2017	15.8	16.7	22.2	4.7	23.7	41	16.1	80.8	11.8
Jacobs 2	3/8/2017	10.3	16.7	27	5.5	21.1	38	13.6	>85	12.5
Front Payne	5/9/2017	8.8	15.7	25.0	5.0	26.4	41.0	8.6	81.1	11.8
Schwass	4/10/2017	16.4	13.0	29.0	5.0	21.4	44.5	10.2	90.3	>12.7

Kowhitirangi

Description	Date	RPM	% DM	% Prot	% Lipid	% ADF	% NDF	Sol Sugar	OMD %	MJME/kg
6	7/6/2017	10.1	15	24.2	5	18.8	34.9	18.8	>85	>12.7
10	3/8/2017	10.7	17.6	21.0	4,7	25.2	44.8	15.4	80.9	11.6
21	6/9/2017	10.6	15.4	23.6	3.8	22.8	42.4	14.3	89.1	>12.7
4	5/10/2017	9.9	13.8	21.5	4.4	21.3	37.9	16.1	89.0	>12.7