

Westland Monitor Farm Project

Weekly Update as at week ending Wednesday 6 June 2018

CO comment

The majority of herds are now dry and the winter grazing plan should now be in place. Keep an eye on the feed wedge over winter and manage the round length accordingly. The paddocks grazed early in winter are likely to be those calved on or milked off early next season, so the grazing pressure and timing of grazing will be important. The winter plan should identify key targets; careful management and monitoring will be needed to ensure you hit those targets that have been identified.

Use any down time on farm, now the cows are being wintered, to either sort out essential maintenance or take a break so everyone is fresh for calving.

There is a West Coast Dairy Farmers Conference in July that will be an ideal event to get off farm to for the day and evening. This conference will involve regionally specific content with a range of industry experts and leaders in attendance and is free to levy paying farmers.

To secure a limited spot visit <https://www.dairynz.co.nz/events/top-of-si-west-coast/west-coast-dairy-farmers-conference-july/>

For other events in your region visit <https://www.dairynz.co.nz/events//?region=5454>

Farm Summary

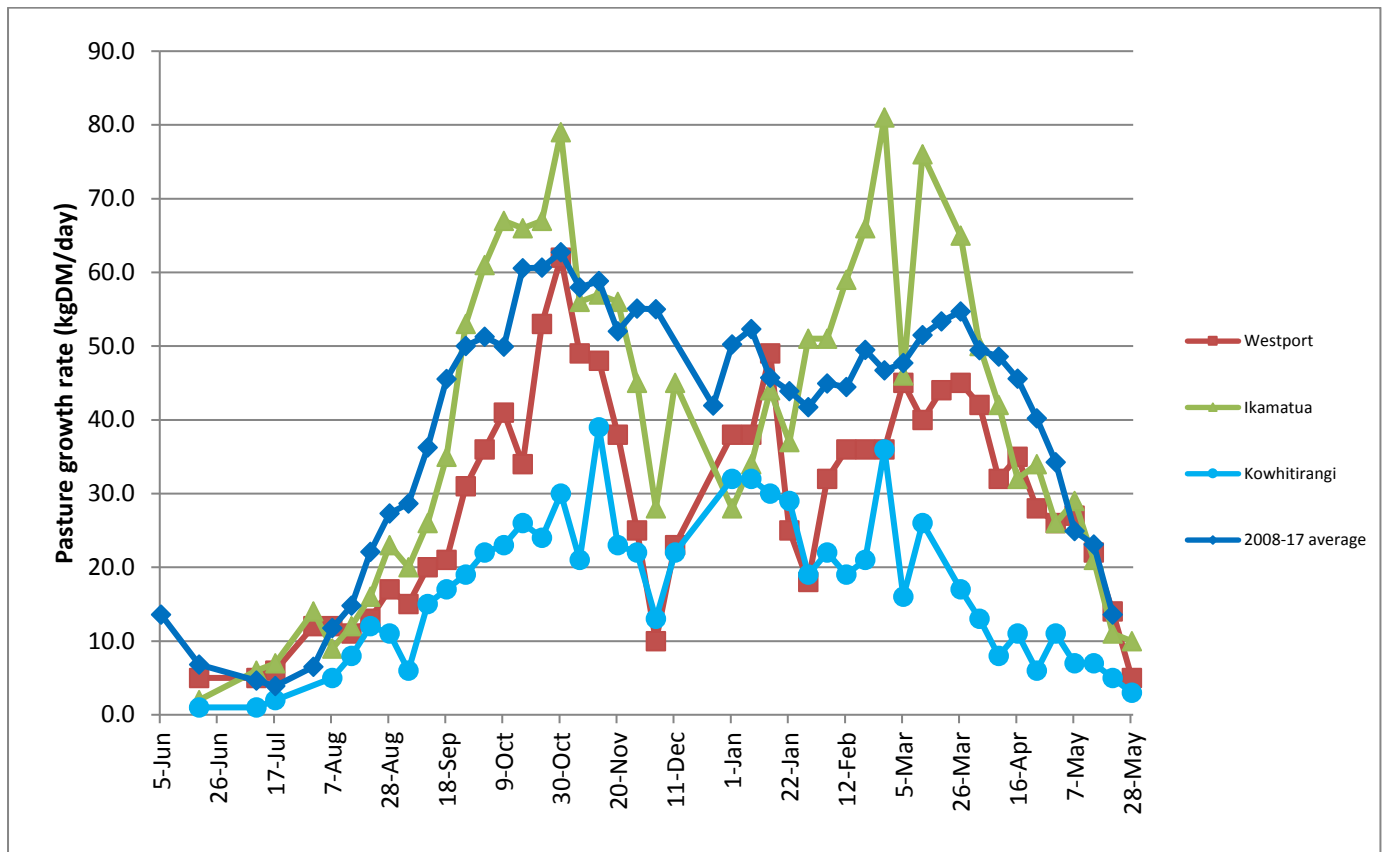
Note: All the cows are now dried off and data reporting will reduce in frequency over the next two months.

	Westport	Ikamatua	Kowhitirangi
Average cover (kg DM/ha)	1975	1987	1771
APC (30 May)	1988	1960	1763
Rotation length (days)	140		
Stocking rate			
Percentage in milk			
Milksolids kg/cow			
Milksolids kg/ha			
MS/cow (season to date)	374	465	326
MS/ha (season to date)	1093	1251	778
N (kg/ha) year to date	197	218	88
Current N application rate kg N/ha	20		
	7 May	8 May	
DM%	12.7	12.8	
Pasture ME	12.9	12.7	
Pasture NDF	46.2	42.6	
Pasture CP	32.7	28.9	
Target Intake (kg DM/cow/d)	8-12		
Supplement (kg/cow/day)	2.5		
Soil temperature (°C)	10	6.4	4.9
Growth Rate (kg DM/day)	5	10	3
Rainfall	0	0	0
Conditions for farmwalk	Very cold wind, but fine	Good frost; Sunny day	Fine, freezing cold wind

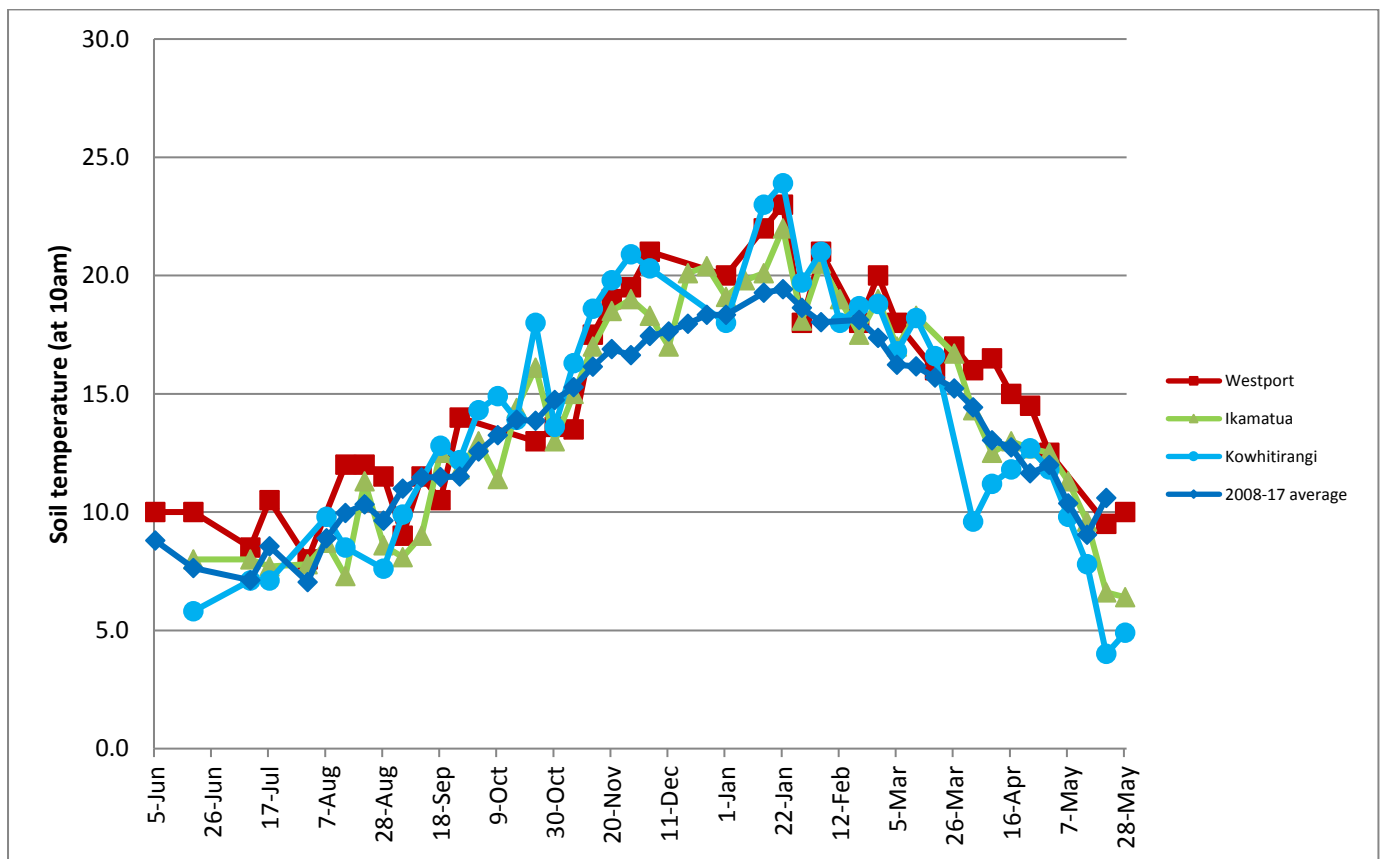
Comments			
----------	--	--	--

NB: pasture quality data are for 1 sample collected from each farm

Weekly Pasture Growth Rates

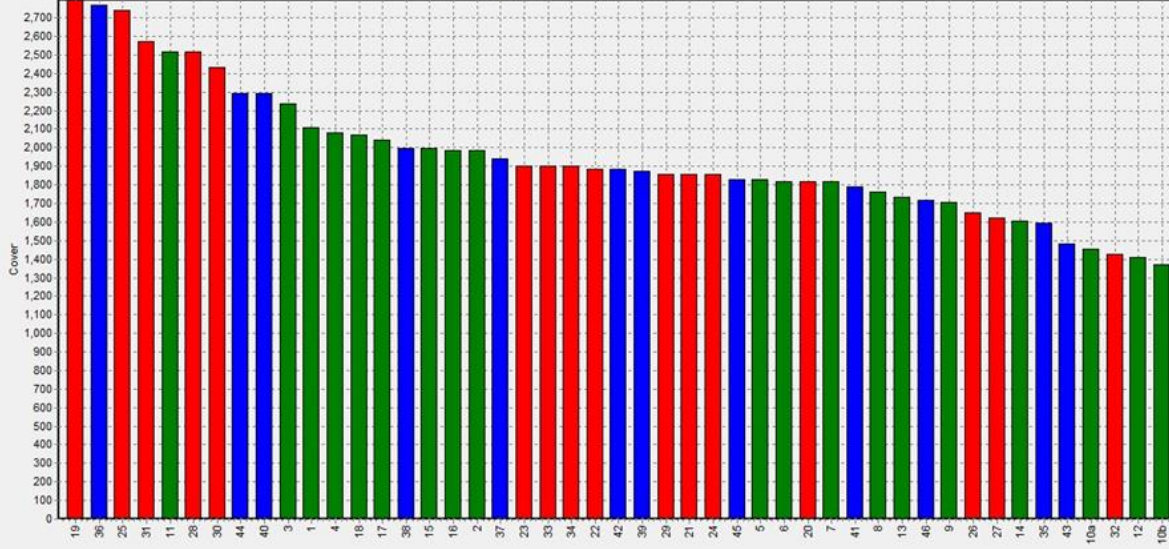


Weekly Soil Temperature



Westport

Farm Name: ADRIAN & CHERYL GALLAGHER
 Date Read : 4/06/2018
 Average Cover : 1975 Kg DM/Ha
 Average Growth : 5 Kg DM/Ha/Day

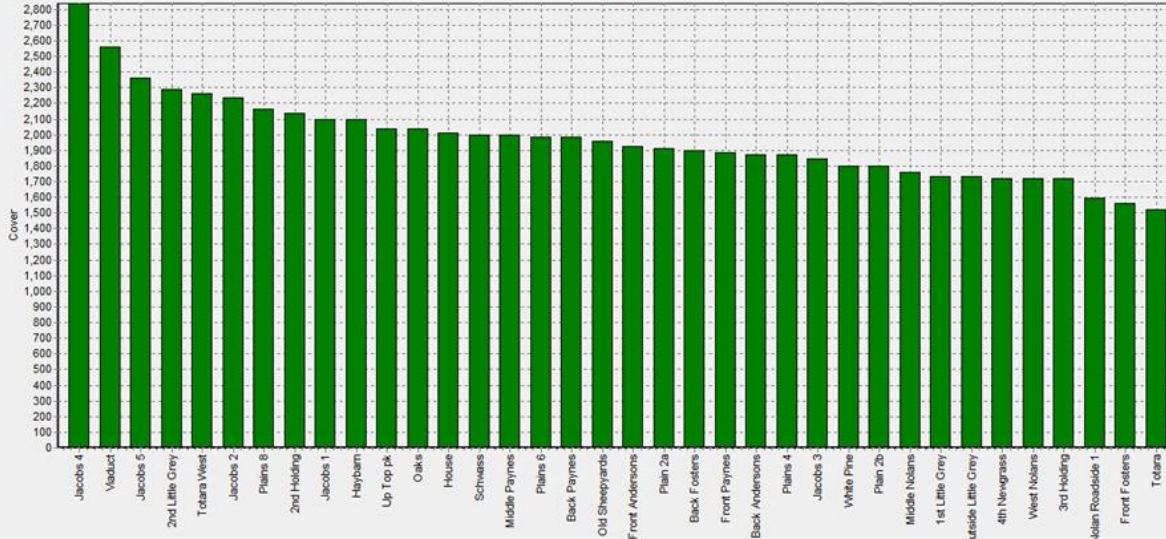


Block 1
 Block 2
 Block 3
 Grazing Window



Ikamatua

Farm Name: ANDREW_NIKI_MIRFIN
 Date Read : 5/06/2018
 Average Cover : 1987 Kg DM/Ha
 Average Growth : 10 Kg DM/Ha/Day

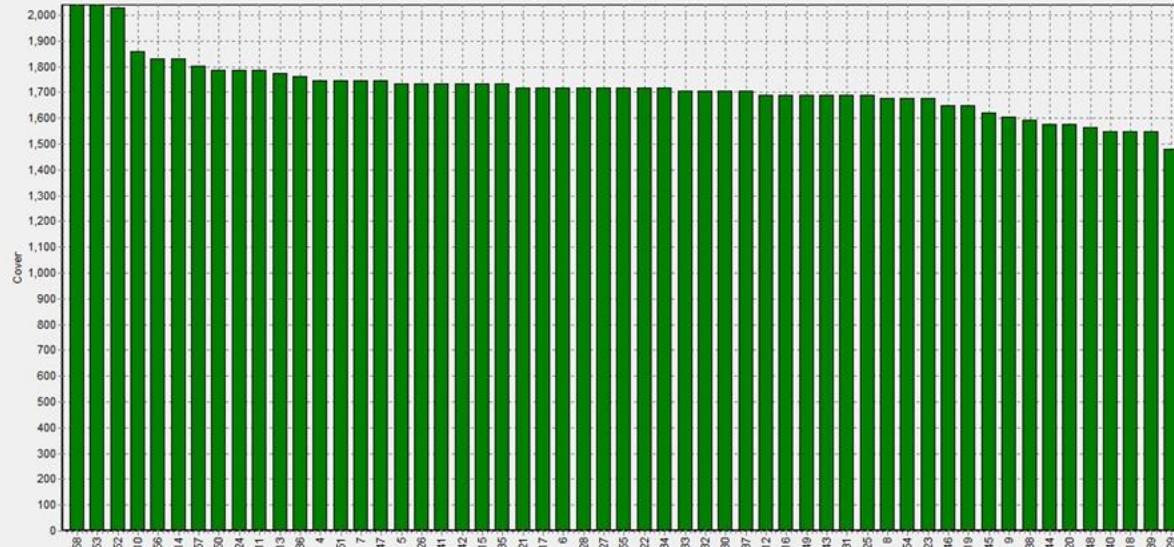


Block 1
 Grazing Window



Kowhitirangi

Farm Name: TANE & RACHEL LITTLE
 Date Read : 6/06/2018
 Average Cover : 1771 Kg DM/Ha
 Average Growth : 3 Kg DM/Ha/Day



Block 1
 Grazing Window



