

Westland Monitor Farm Project

Weekly Update 6 October 2017

CO comment

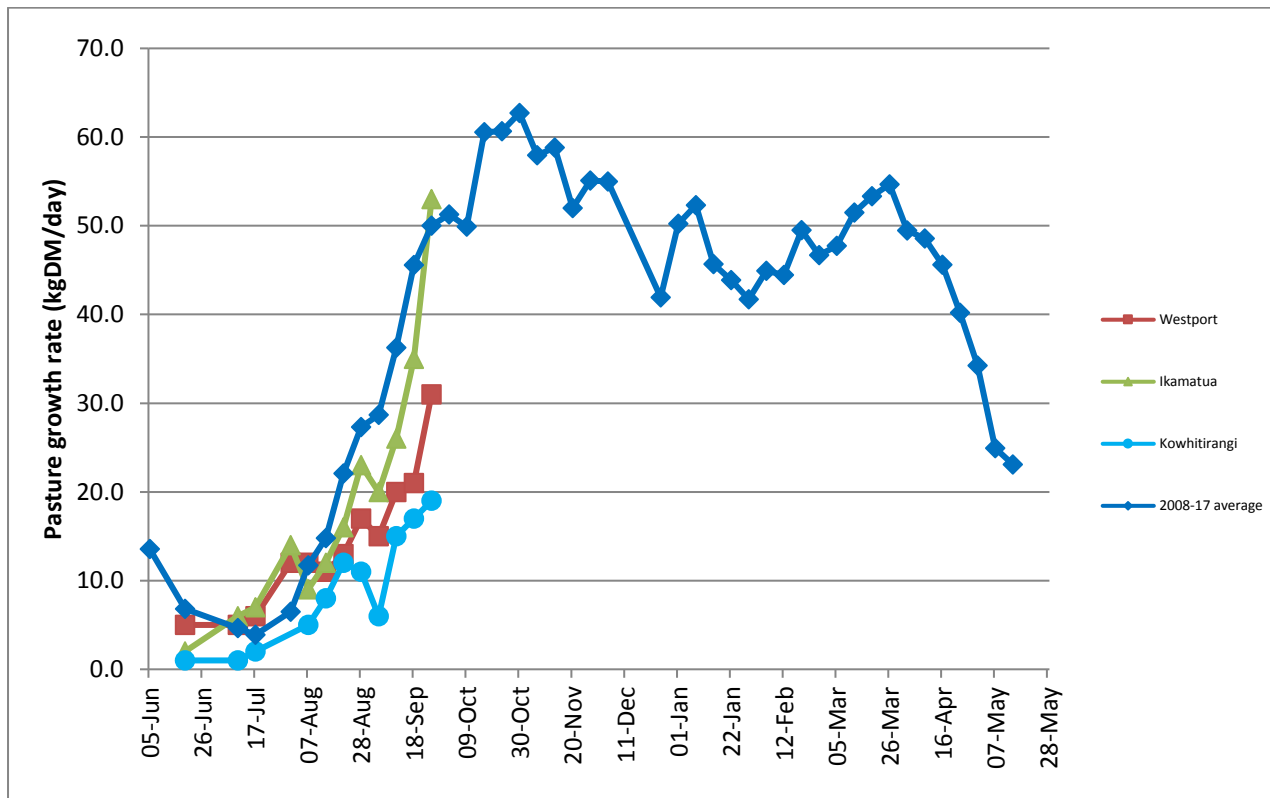
Cows can reach their peak milk production per cow in as little as 4 weeks after calving but peak dry matter (DM) intake potential is not reached until 7-10 weeks after calving. It is important to fully feed cows so that they can reach their maximum production peak. Filling feed deficits with supplements will allow cows to maintain energy intake and production. With a bit of luck (some fine weather would help too) balance date is hopefully around the corner with some possibly already there, now is time to take stock of supplement use and the reasons for it. There is no advantage to replacing good quality pasture with an alternative feed source. Supplements should only be used to provide energy when there is insufficient pasture available. If feeding supplements results in high grazing residuals, this is wasted feed and the reductions in future pasture growth and quality should be considered. When supplements are required in a deficit situation they can help to optimise the area grazed each day, the rotation length, and the pasture residual. Remember the profitability of feeding supplements varies depending on the situation. The key to making good decisions on supplement usage relies on consistent monitoring of pasture and animals. **When there is enough pasture, pasture is enough!**

Farm Summary

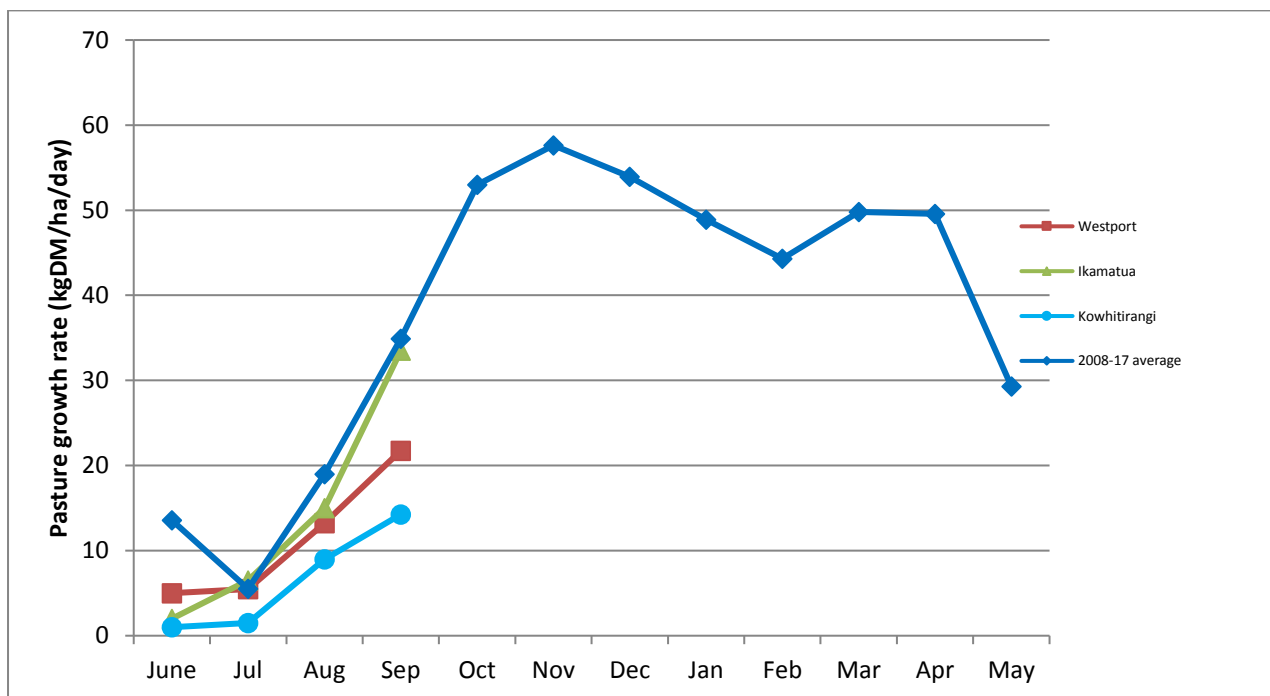
	Westport	Ikamatua	Kowhitirangi
Average cover (kg DM/ha)	1866	2065	1817
APC (29 September)	1811	1980	1824
Rotation length (days)	19	23	
Stocking rate	2.9		
Percentage in milk	100		
Milksolids kg/cow	1.72		
Milksolids kg/ha	4.8		
MS/cow (season to date)	54.4		
MS/ha (season to date)	159.3		
N (kg/ha) year to date	33		
Current N application rate kg N/ha	20		
	4 Sep	5 Sep	6 Sep
DM%	15.4	15.7	15.4
Pasture ME	12.9	11.8	13.0
Pasture NDF	42.2	41.0	42.4
Pasture CP	31.9	25.0	23.6
Target Intake (kg DM/cow/d)	18	20	
Supplement (kg/cow/day)	3.0	3.5	
Soil temperature (°C)	14	11.8	12.2
Growth Rate (kg DM/day)	31	53	19
Rainfall		29	
Conditions for farmwalk	Rain	Overcast/rain	Fine
Comments			

NB: pasture quality data are for 1 sample collected from each farm

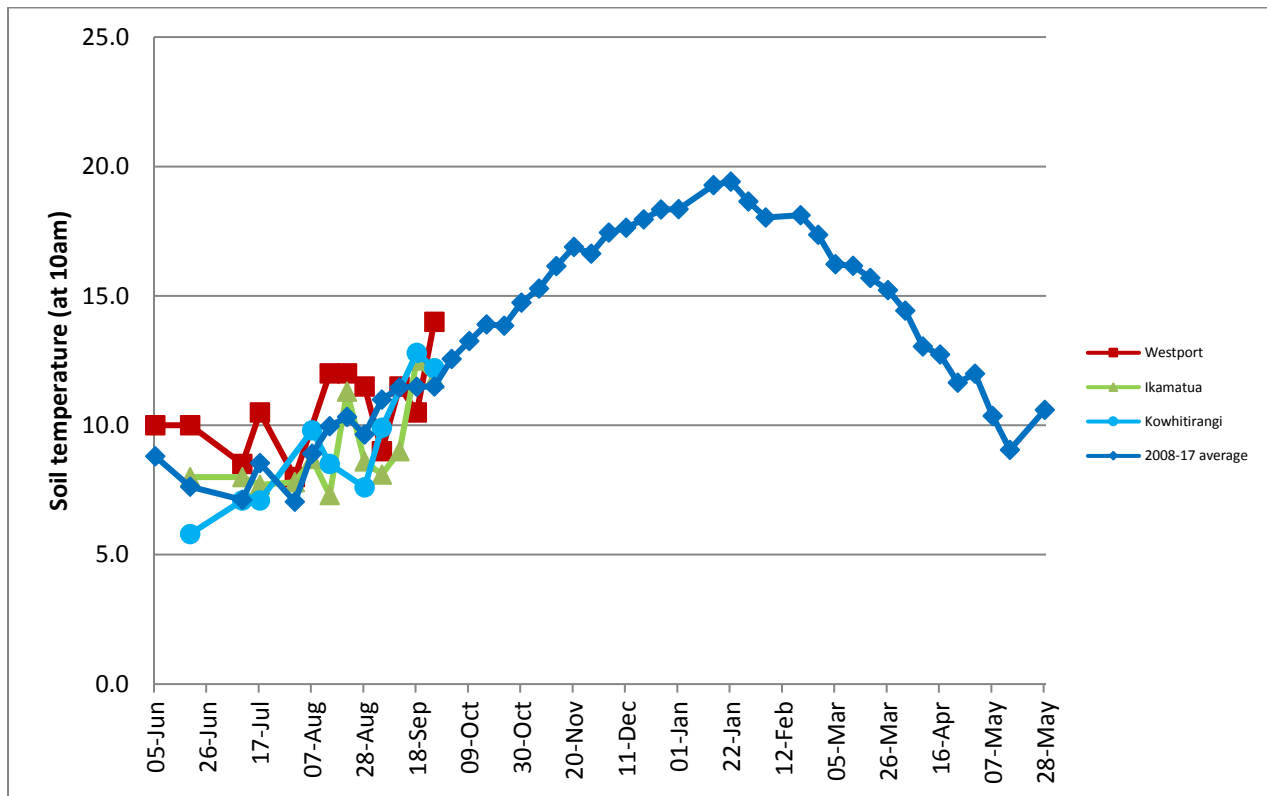
Weekly Pasture Growth Rates



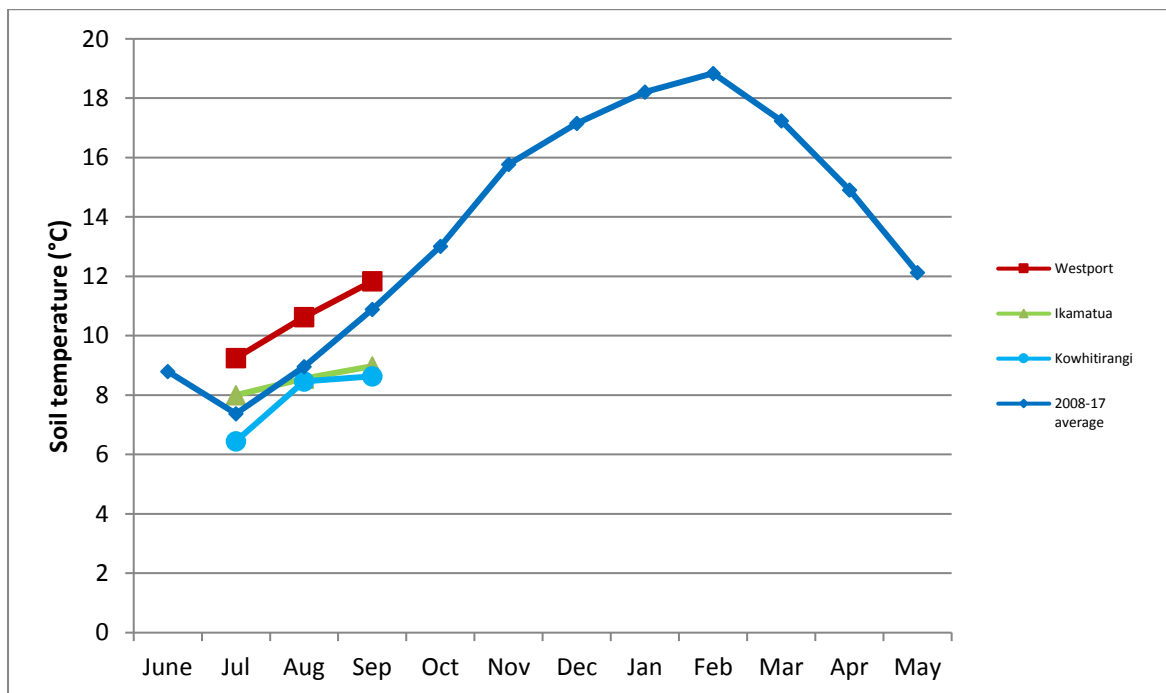
Monthly Pasture Growth Rates



Weekly Soil Temperature

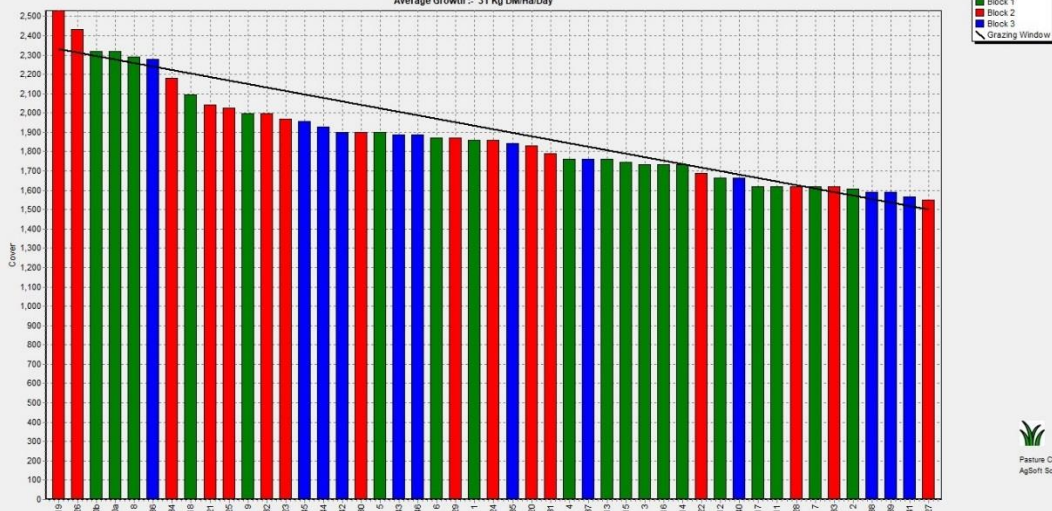


Monthly Soil Temperature



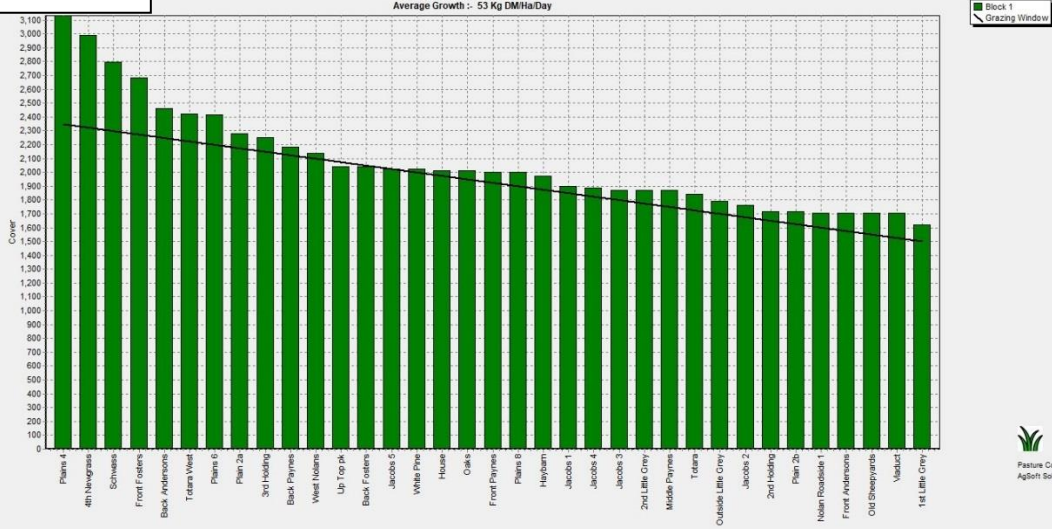
Westport

Farm Name: ADRIAN & CHERYL GALLAGHER
 Date Read: 2/10/2017
 Average Cover: 1866 Kg DM/Ha
 Average Growth: 31 Kg DM/Ha/Day



Ikamatua

Farm Name: ANDREW NIKI MIRFIN
 Date Read: 3/10/2017
 Average Cover: 2065 Kg DM/Ha
 Average Growth: 53 Kg DM/Ha/Day



Kowhitirangi

Farm Name: TANE & RACHEL LITTLE
 Date Read: 4/10/2017
 Average Cover: 1817 Kg DM/Ha
 Average Growth: 19 Kg DM/Ha/Day

