

Westland Monitor Farm Project

Weekly Update 8 December 2017

CO comment

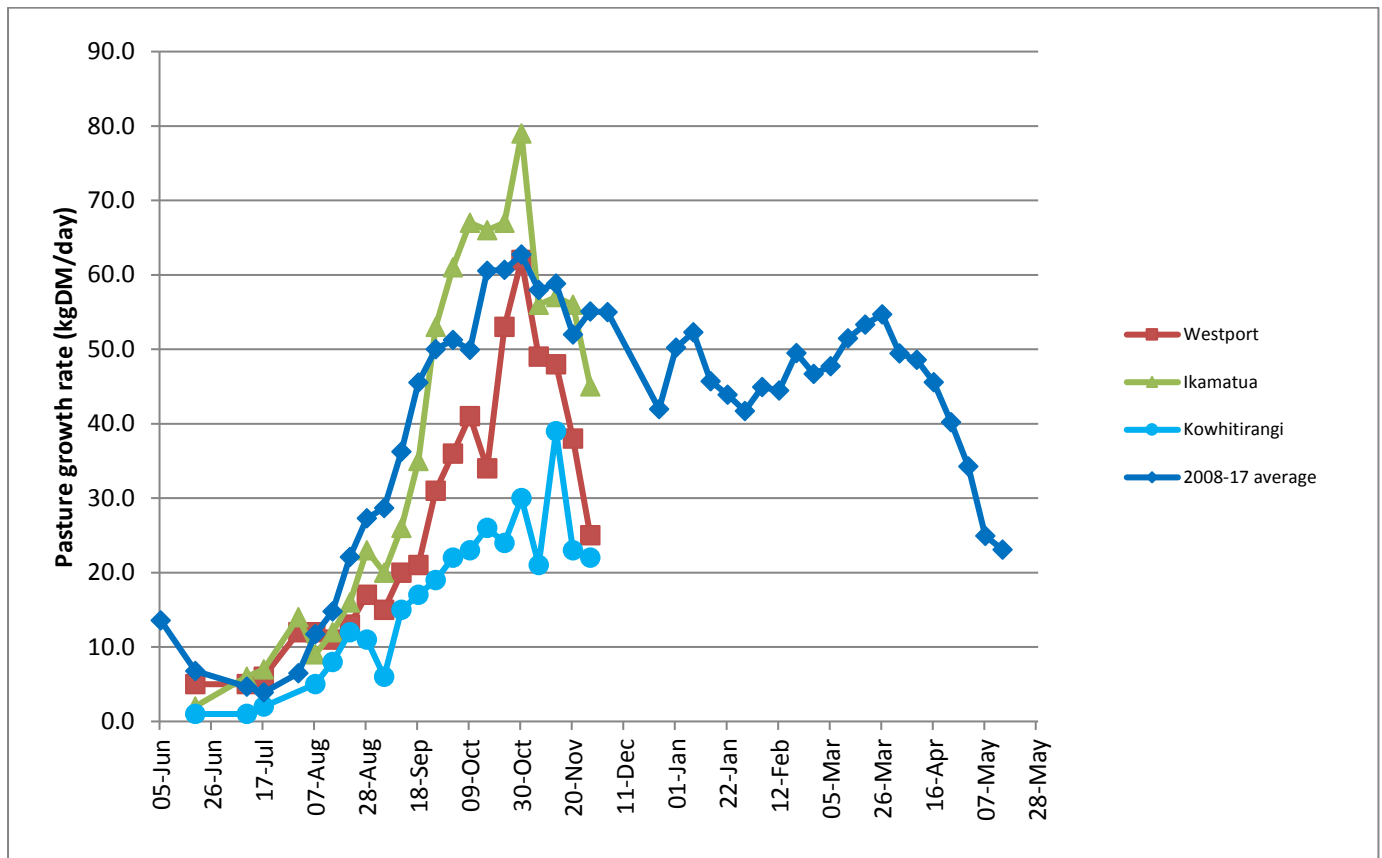
With the dry weather continuing and with minimal rain either falling or expected to, it is important to have a summer management strategy for your farm. Successful summer management depends on planning, monitoring and taking action. This applies to whatever type of summer arrives. Planning a summer strategy in early December helps focus on the profitability of the herd's production for the remainder of the season, and prevents next season from being compromised. Be clear about target dates and trigger points for any feeding out and drying off decisions, culling decisions, and changes to milking frequency (16 hours/OAD). It's preferable to have these targets and dates in place now rather than waiting to see what happens. When these targeted dates arrive there will still be yes and no decisions to make. Be realistic with estimates of supplement and milk prices, crop tonnages and pasture condition. For many farms, winter and spring pasture damage and the subsequent weed burdens could change expectations about how these pastures will perform over summer. Determine the facts, like an estimate of how much less silage is on hand and how much less crop I will have. Assess and measure the size of any potential deficit and have a plan to cope.

Farm Summary

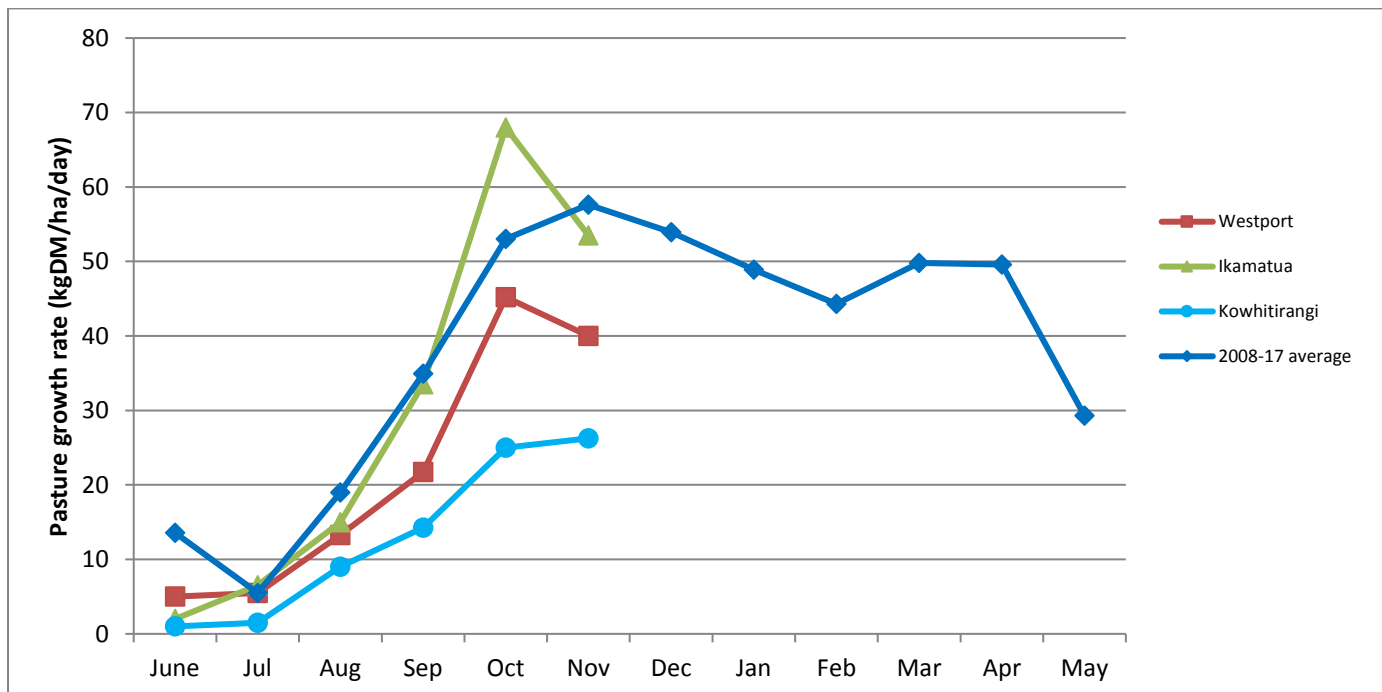
	Westport	Ikamatua	Kowhitirangi
Average cover (kg DM/ha)	1982	2085	1849
APC (1 December)	2169	2055	1853
Rotation length (days)	22	30	26
Stocking rate	2.9	2.7	2.3
Percentage in milk	100	100	100
Milksolids kg/cow	1.87	2.06	1.6
Milksolids kg/ha	5.3	5.7	3.6
MS/cow (season to date)	153	204	116
MS/ha (season to date)	447	549	276
N (kg/ha) year to date	76	87	60
Current N application rate kg N/ha	15	None	None
	30 Oct	31 Oct	1 Nov
DM%	13.5	16.2	15.6
Pasture ME	11.8	12.6	12.1
Pasture NDF	6.4	10.6	11.2
Pasture CP	26.9	26.8	21.0
Target Intake (kg DM/cow/d)	18	18	18
Supplement (kg/cow/day)	2	7	0
Soil temperature (°C)	19.5	19	20.9
Growth Rate (kg DM/day)	25	45	22
Rainfall	0	0	0
Conditions for farmwalk	Very hot; Farm getting very dry	Very dry and hot; Farm dry but not as bad as I have seen it; Irrigation a life saver, need more though	Even Little's looking dry; Rain coming at weekend
Comments			

NB: pasture quality data are for 1 sample collected from each farm

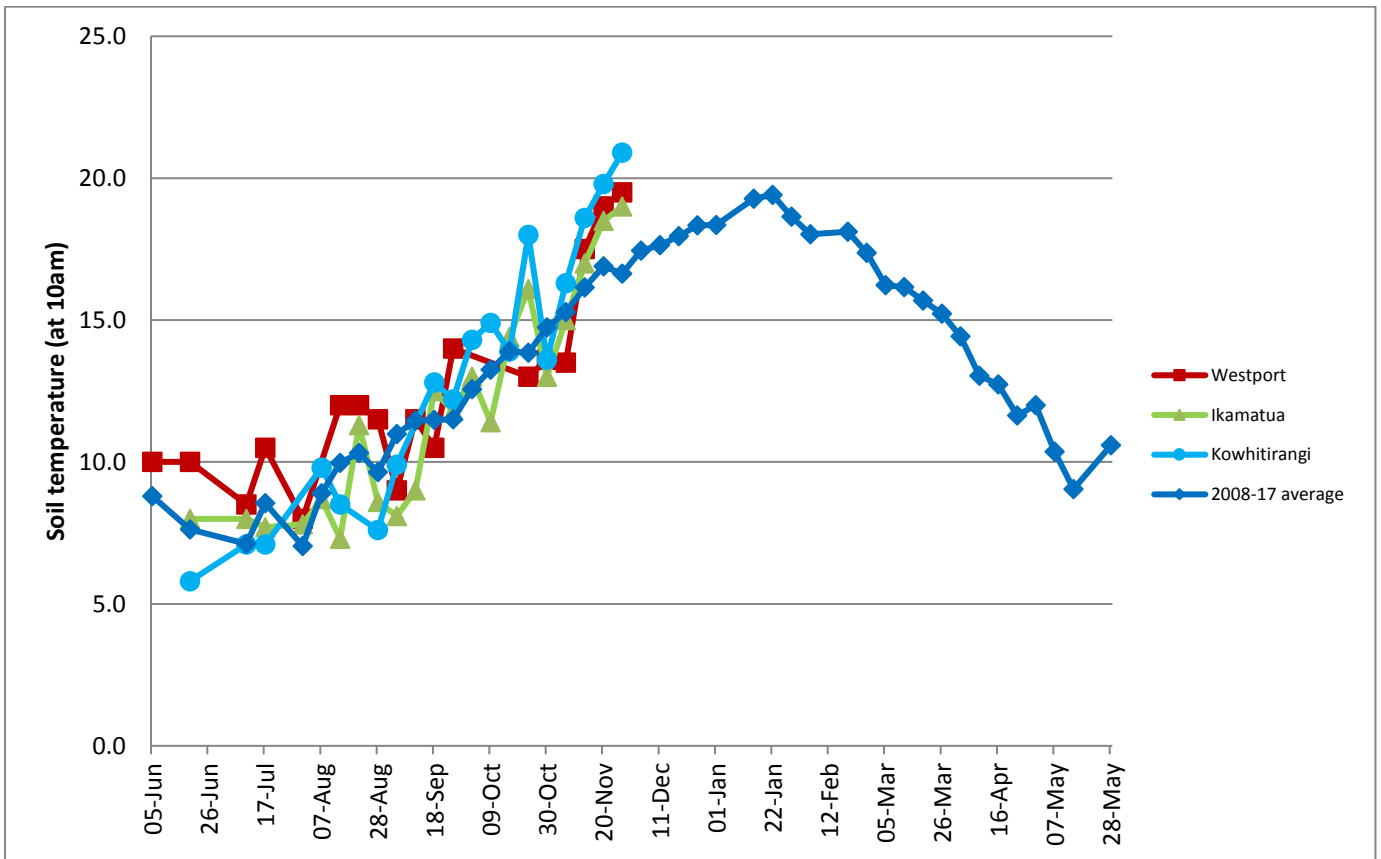
Weekly Pasture Growth Rates



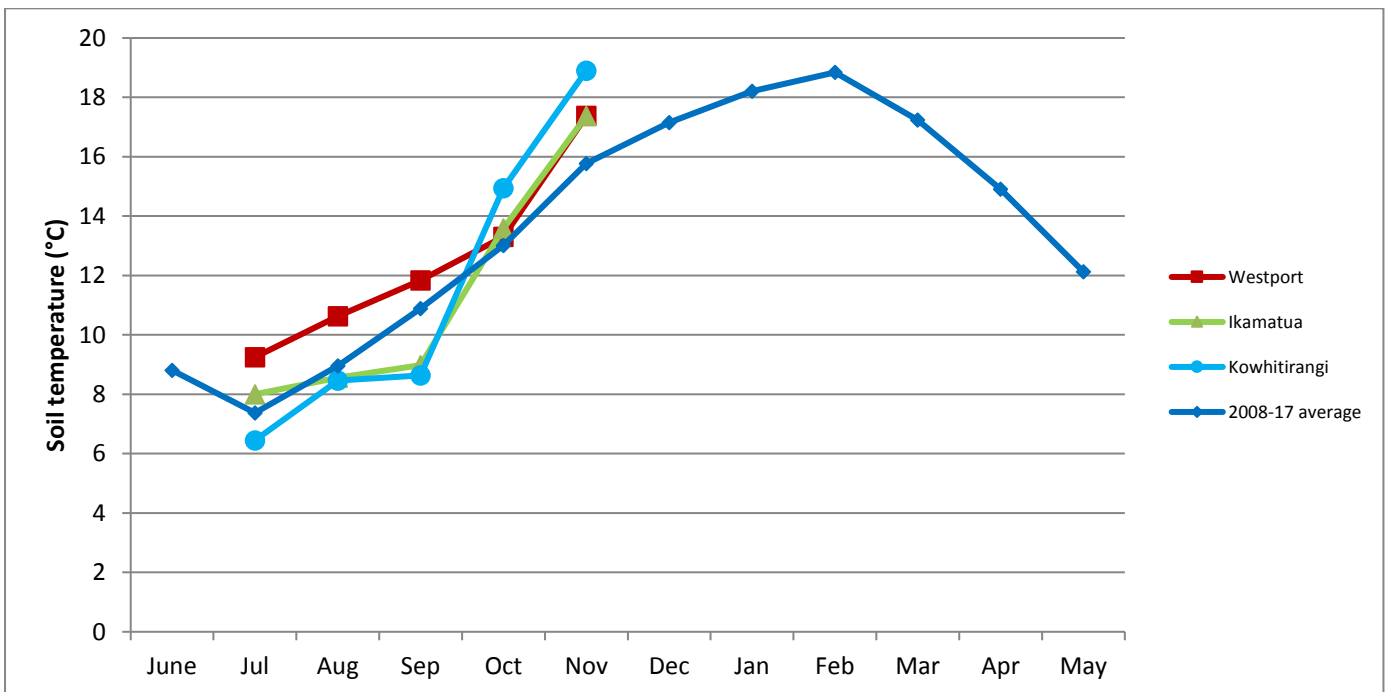
Monthly Pasture Growth Rates



Weekly Soil Temperature

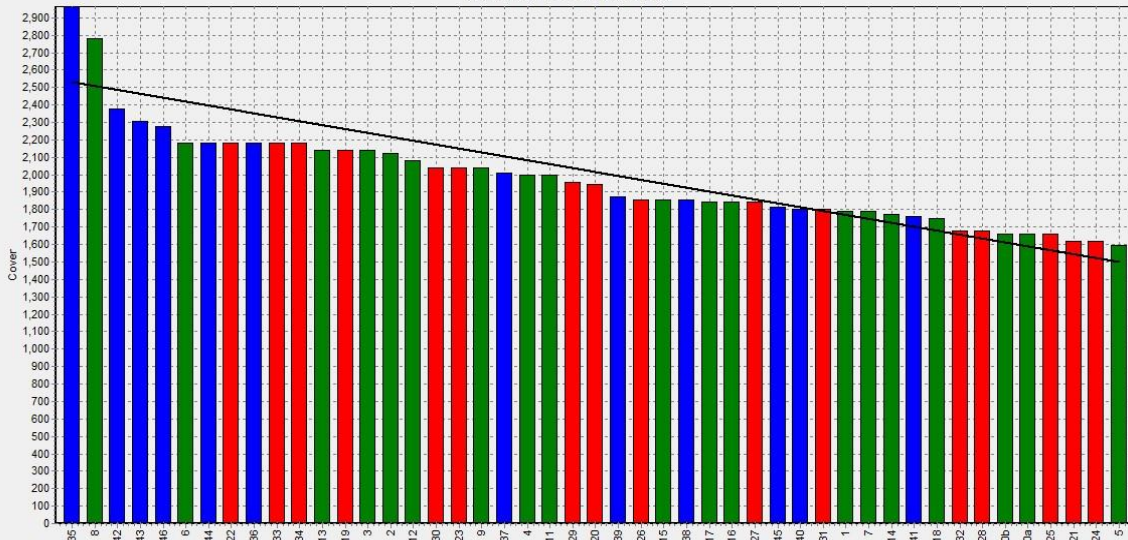


Monthly Soil Temperature



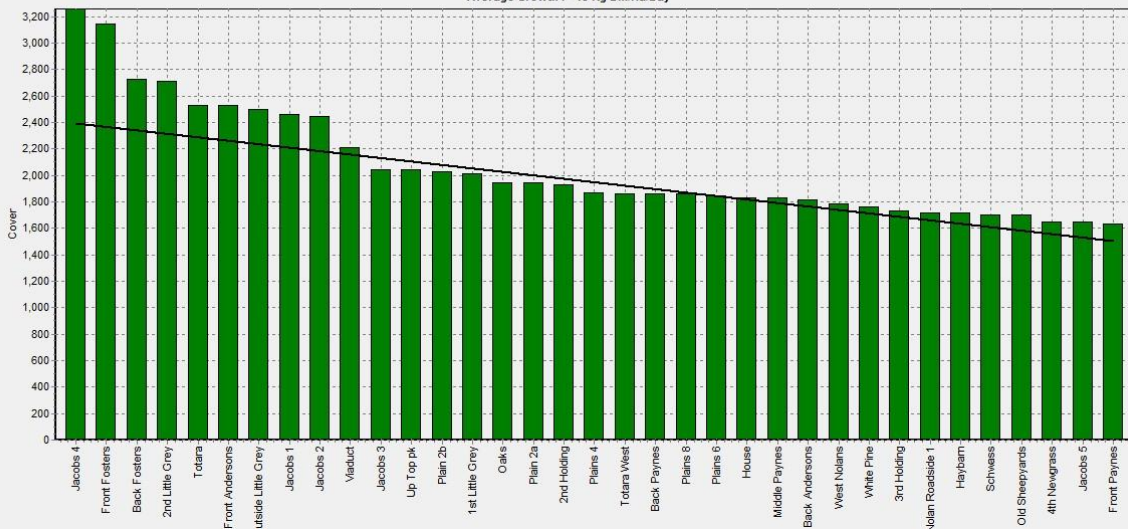
Westport

Farm Name:- ADRIAN & CHERYL GALLAGHER
 Date Read :- 4/12/2017
 Average Cover :- 1982 Kg DM/Ha
 Average Growth :- 25 Kg DM/Ha/Day



Ikamatua

Farm Name:- ANDREW_NIKI_MIRFIN
 Date Read :- 5/12/2017
 Average Cover :- 2085 Kg DM/Ha
 Average Growth :- 45 Kg DM/Ha/Day



Kowhitirangi

Farm Name:- TANE & RACHEL LITTLE
 Date Read :- 6/12/2017
 Average Cover :- 1849 Kg DM/Ha
 Average Growth :- 22 Kg DM/Ha/Day



Pasture Quality

NOTE: We sample the paddocks immediately in front of the milkers, to height of 3.5cm (7 clicks on the rising plate meter). The RPM data in the table is the pre-grazing clicks recorded on the day of sampling.

Westport

Description	Date	RPM	% DM	% Prot	% Lipid	% ADF	% NDF	Sol Sugar	OMD %	MJME /kg
42	5/6/2017	10.0	16.7	37.8	5.4	20.4	43.6	5.1	>85	>12.7
44	3/8/2017	14.8	20.0	27.3	5.2	22.9	46.4	8.0	84.6	12.4
4	4/9/2017	10.3	15.4	31.9	5.3	22.4	42.2	5.9	88.5	12.9
26	3/10/2017	13.8	11.8	30.1	3.8	23.7	49.8	5.5	91.2	>12.7
40	30/10/2017	11.4	13.5	26.9	10.9	40.0	6.4			11.8

Ikamatua

Description	Date	RPM	% DM	% Prot	% Lipid	% ADF	% NDF	Sol Sugar	OMD %	MJME/kg
Haybarn	6/6/2017	14.8	16.3	29	5.4	19.6	37.4	12.7	>85	12.7
Totara east	3/8/2017	10.3	15.7	26.9	5.1	20.2	35.8	16.7	>85	>12.7
Totara west	3/8/2017	10.9	17.4	24.4	5.1	20.8	37.2	19.9	>85	>12.7
Plain 5	3/8/2017	12.2	17.3	24.5	4.7	20.5	41.4	16.7	>85	>12.7
Viaduct	3/8/2017	13.6	16.4	22.8	4.6	21.8	37.9	21.3	>85	>12.7
Mid-Payne	3/8/2017	15.8	16.7	22.2	4.7	23.7	41	16.1	80.8	11.8
Jacobs 2	3/8/2017	10.3	16.7	27	5.5	21.1	38	13.6	>85	12.5
Front Payne	5/9/2017	8.8	15.7	25.0	5.0	26.4	41.0	8.6	81.1	11.8
Schwass	4/10/2017	16.4	13.0	29.0	5.0	21.4	44.5	10.2	90.3	>12.7
Jacobs 2	31/10/2017	16.6	16.2	26.8	10.0	39.7	10.6			12.6

Kowhitirangi

Description	Date	RPM	% DM	% Prot	% Lipid	% ADF	% NDF	Sol Sugar	OMD %	MJME/kg
6	7/6/2017	10.1	15	24.2	5	18.8	34.9	18.8	>85	>12.7
10	3/8/2017	10.7	17.6	21.0	4.7	25.2	44.8	15.4	80.9	11.6
21	6/9/2017	10.6	15.4	23.6	3.8	22.8	42.4	14.3	89.1	>12.7
4	5/10/2017	9.9	13.8	21.5	4.4	21.3	37.9	16.1	89.0	>12.7
2	1/11/2017	10.4	15.6	21.0	9.5	41.6	11.2			12.1