

Westland Monitor Farm Project

Weekly Update 9 November 2017

CO comment

Keep the vigilance around heat detection going.

Second and third cycles are often more difficult for heat detection as fewer cows are participating in heat activity. Keeping heat detection aids such as tail paint, up to date will help to identify cycling cows.

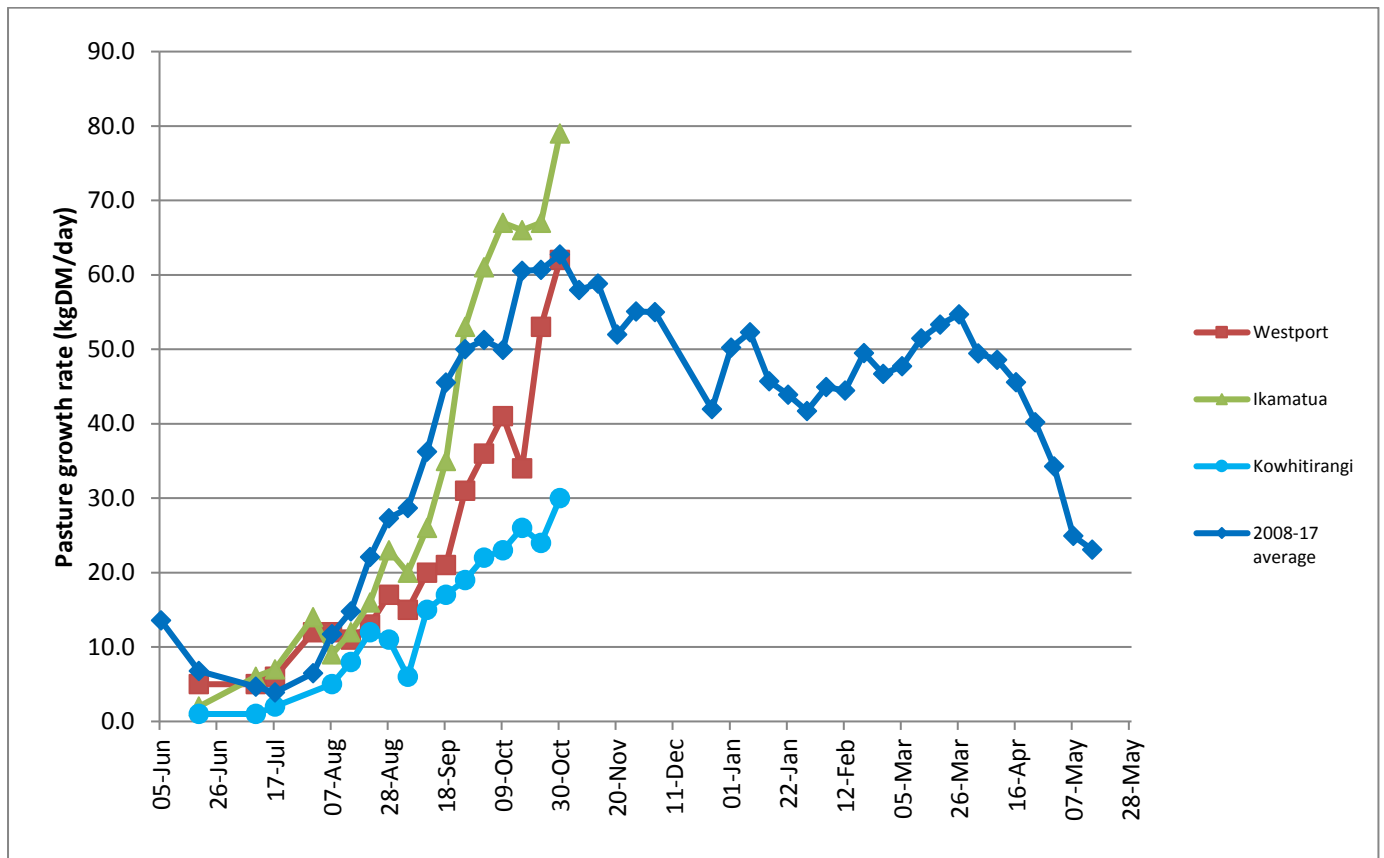
Make sure enthusiasm is maintained amongst staff for the heat detection task. Using short gestation semen can help recover some days in milk for later mated cows. With so much going on at this time of year it can be easy to overlook the replacement heifer calves. Achieving target liveweights at weaning is critical if performance targets are to be met down the track. Basing decisions on a measured liveweight is going to be far more effective than weaning decisions based on age or guesswork. Once weaned onto pasture, keep providing access to meal or other protein rich feedstuffs, at up to 2kg/head/day, gradually reducing this over the next few months. Check the liveweight progress by regular weighing's and if there are animals not putting on weight they should be pulled out for preferential feeding.

Farm Summary

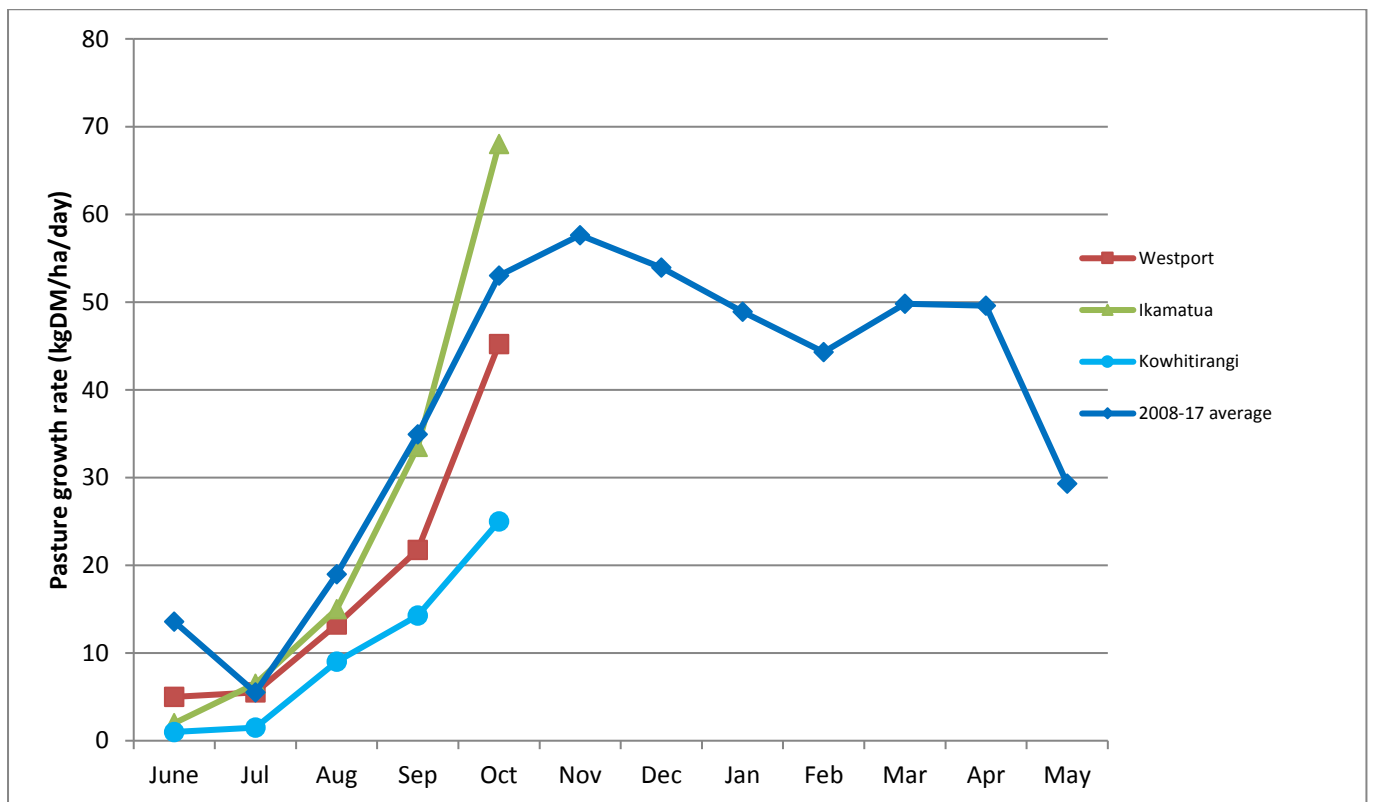
	Westport	Ikamatua	Kowhitirangi
Average cover (kg DM/ha)	2127	2061	1893
APC			
Rotation length (days)	18	20	26
Stocking rate	2.9	2.7	2.4
Percentage in milk	100	100	100
Milksolids kg/cow		2.25	1.80
Milksolids kg/ha		6.1	4.1
MS/cow (season to date)		143.5	82.3
MS/ha (season to date)		386	196
N (kg/ha) year to date		74	60
Current N application rate kg N/ha		20	None
	3 Oct	4 Oct	5 Oct
DM%	11.8	13.0	13.8
Pasture ME	>12.7	>12.7	>12.7
Pasture NDF	49.8	44.5	37.9
Pasture CP	30.1	29.0	21.5
Target Intake (kg DM/cow/d)	18	20	18
Supplement (kg/cow/day)	1.5	4.0	1.5
Soil temperature (°C)	13.6	13.0	13.6
Growth Rate (kg DM/day)	62	79	30
Rainfall	42	59	185
Conditions for farmwalk	Cold, clear day. Farm wet. Been a lot of rain	Very cold overcast	Heavy rain, gale winds. Very cold
Comments			

NB: pasture quality data are for 1 sample collected from each farm

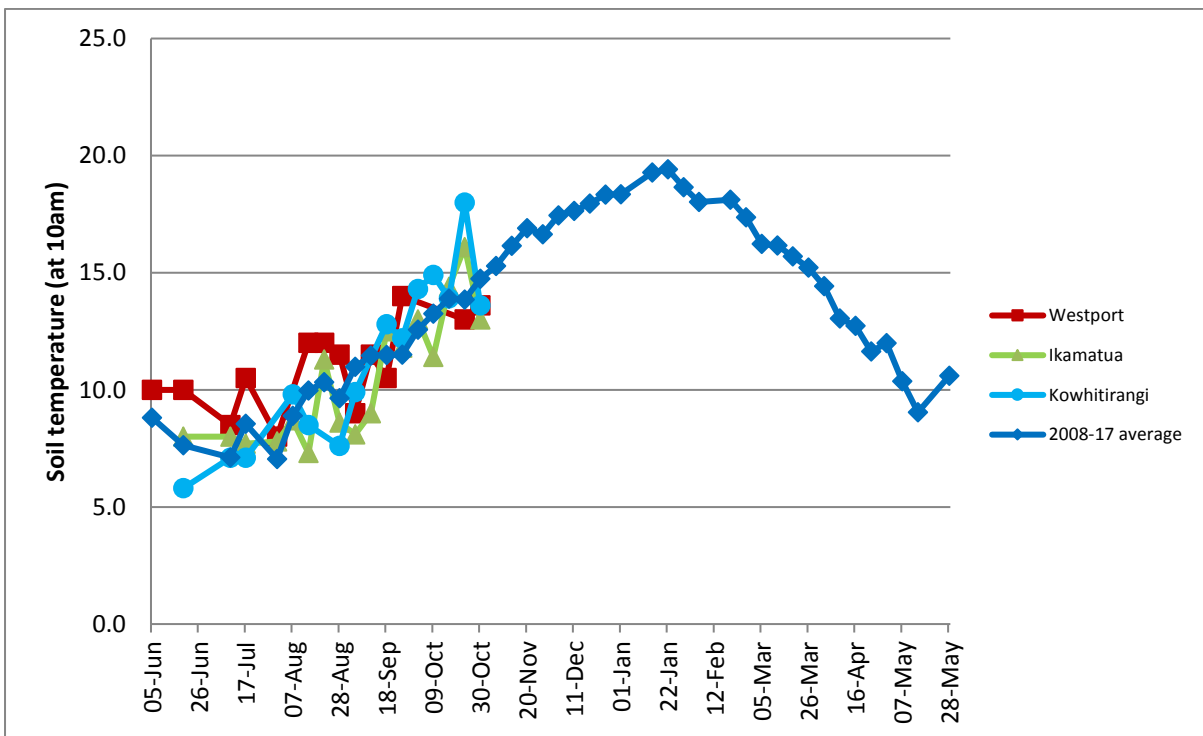
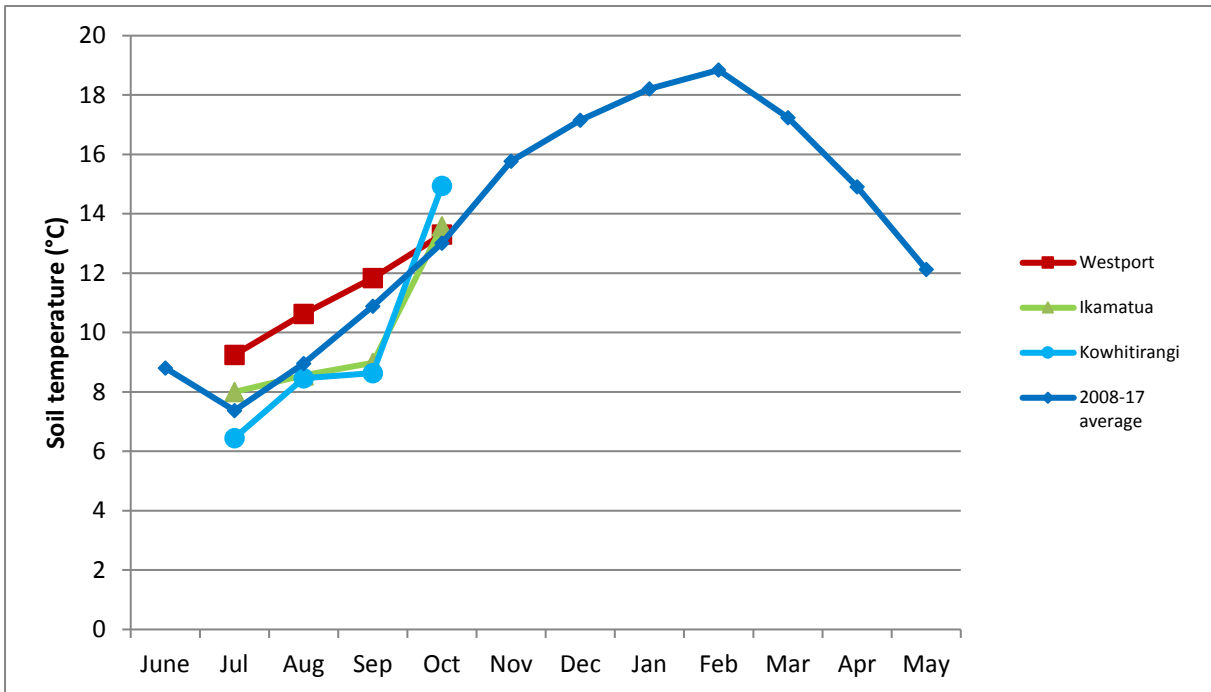
Weekly Pasture Growth Rates



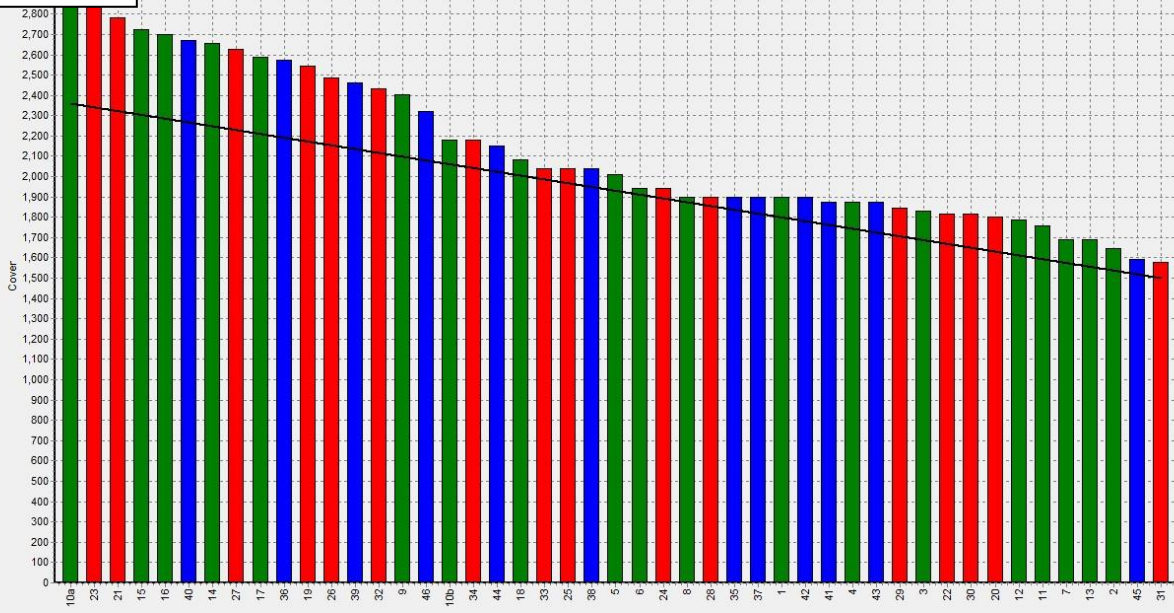
Monthly Pasture Growth Rates



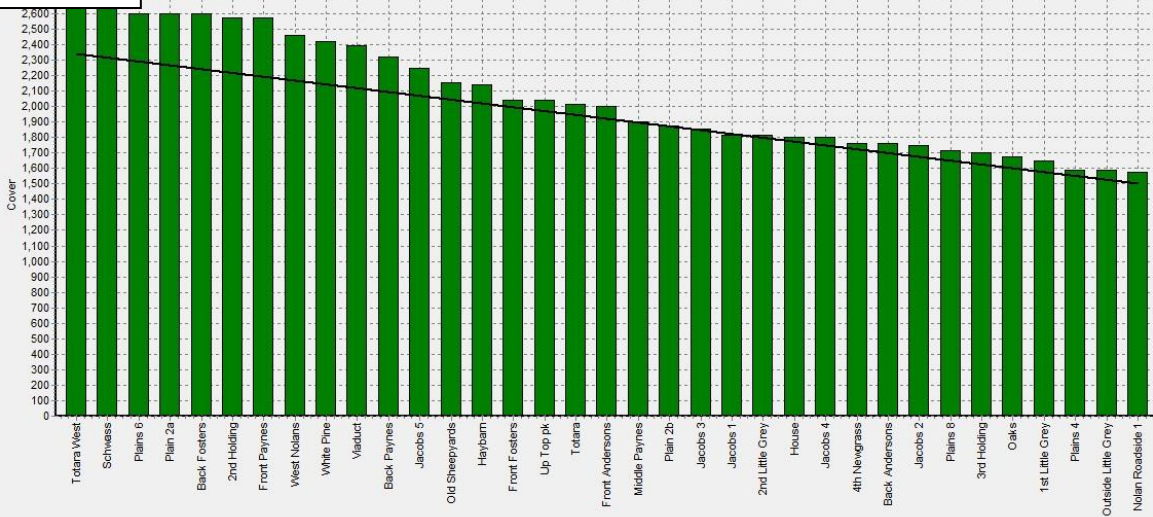
Weekly Soil Temperature



Westport



Ikamatua



Kowhitirangi



