

# Westland Monitor Farm Project

**Weekly Update** as at week ending Wednesday 4<sup>th</sup> April 2018

## CO comment

Good grazing management through autumn maximises the pasture you grow and utilise, balanced with allowing pastures to recover following any dry periods in the summer.

The secret to achieving this good grazing management is leaving consistent post-grazing residuals and graze pastures at the right time (2.5-3 leaves). Grazing ryegrass pastures too early reduces autumn growth and too late reduces quality.

### **Good management: improved persistence**

- Grazing at the 2½ - to 3-leaf stage. During May, the rotation length may be extended beyond this to start building feed for winter.
- Preventing grazing below 7 clicks/1500 kg DM/ha.
- If residuals are less than 7 clicks/1500 kg DM/ha, feed supplement to maintain herd intake and protect pasture.

Be mindful not to allocate too much pasture area (fast rotation) immediately after rain or intensely graze pasture before plants reach the three leaf stage which will reduce recovery of tiller numbers during autumn.

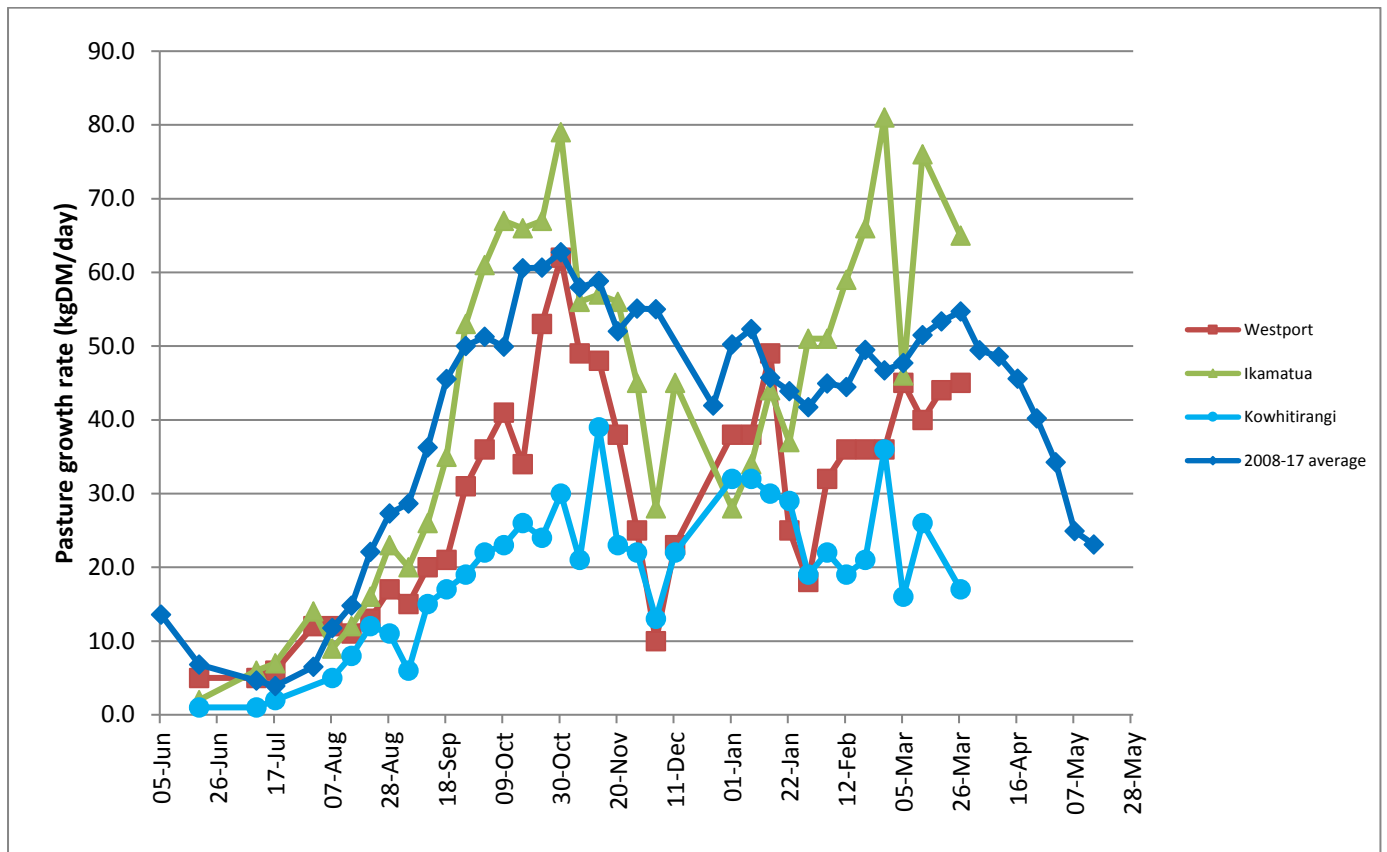
Use the Autumn Management Tool to identify the best options for achieving average pasture cover and cow body condition targets. The autumn management tool considers the profitability of milking versus drying cows off. Download it at <https://www.dairynz.co.nz/feed/pasture-management/assessing-farm-performance/autumn-management-tool/>

## Farm Summary

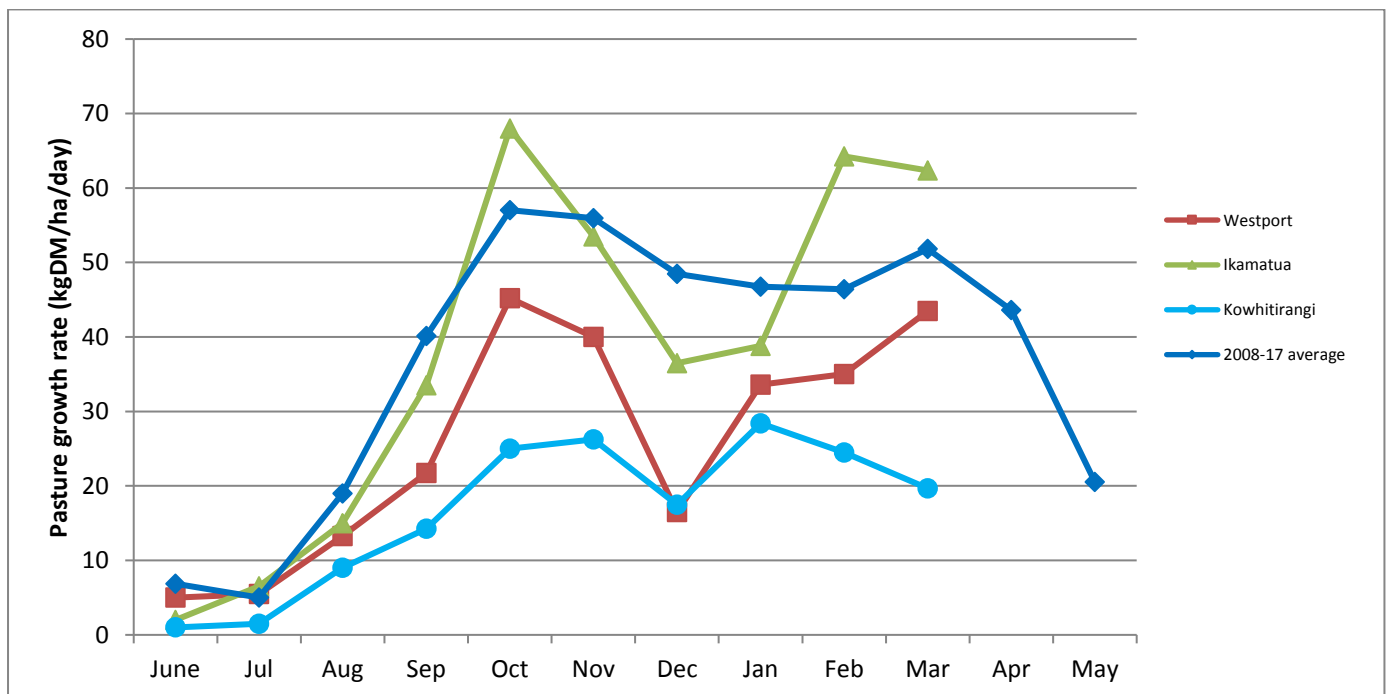
	Westport	Ikamatua	Kowhitirangi
Average cover (kg DM/ha)	2099	1992	1909
APC (28 <sup>th</sup> March)	2065	2085	2010
Rotation length (days)	20	22	31
Stocking rate	2.9	2.7	2.4
Percentage in milk	88	97	100
Milksolids kg/cow	1.27	1.54	1.13
Milksolids kg/ha	3.2	3.5	2.7
MS/cow (season to date)	337	413	301
MS/ha (season to date)	985	1111	717
N (kg/ha) year to date	158	166	88
Current N application rate kg N/ha	15	30	None
	5 March	6 March	7 March
DM%	10.6	11.2	13.7
Pasture ME	12.4	>12.7	>12.7
Pasture NDF	48.5	49.5	46.8
Pasture CP	29.3	33.8	31.7
Target Intake (kg DM/cow/d)	18	18	17
Supplement (kg/cow/day)	2	2.5	0
Soil temperature (°C)	17		16
Growth Rate (kg DM/day)	45	65	17
Rainfall	18	47	180
Conditions for farmwalk	Fine but overcast	Fine, warm day	Heavy rain
Comments			

NB: pasture quality data are for 1 sample collected from each farm

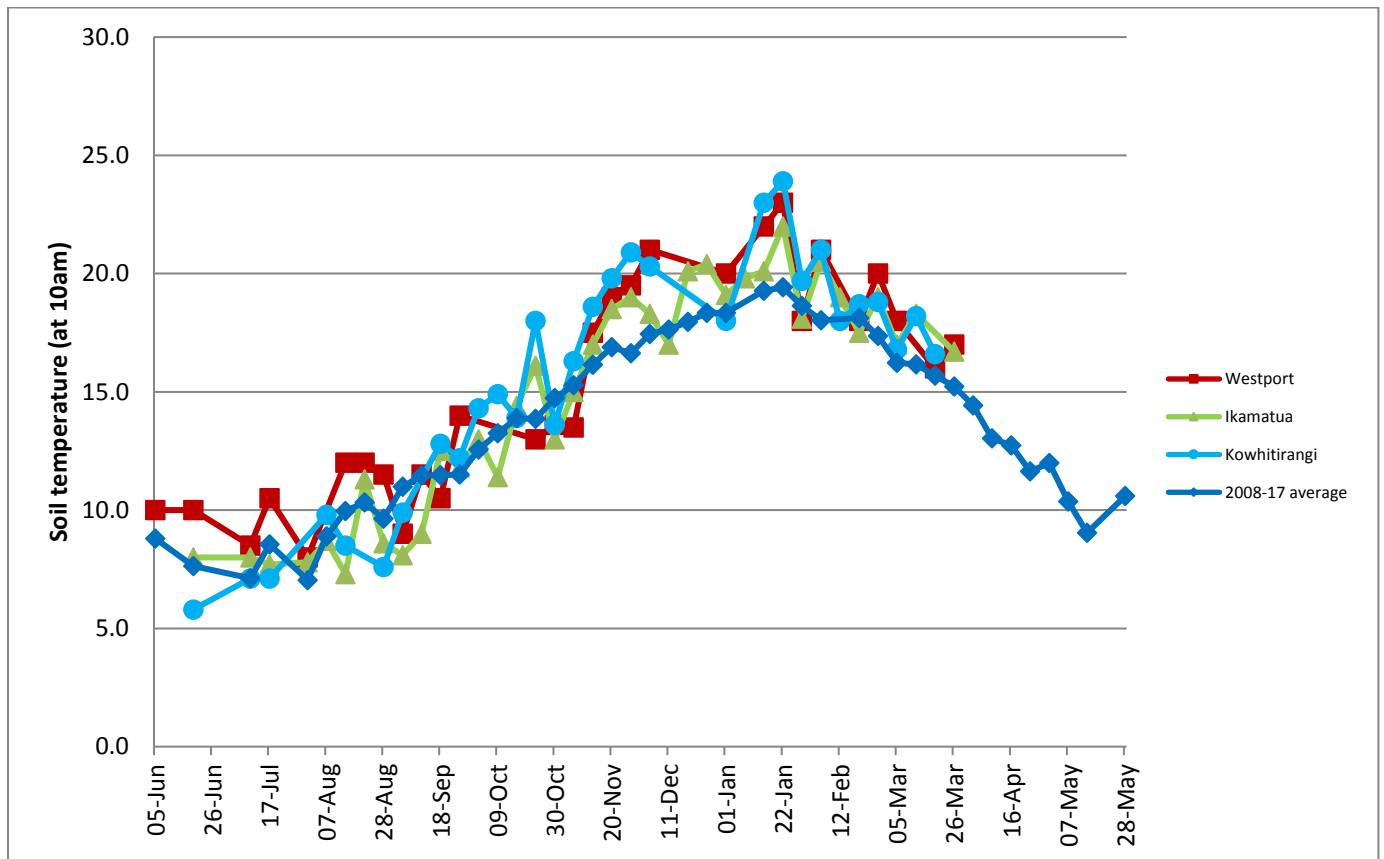
## Weekly Pasture Growth Rates



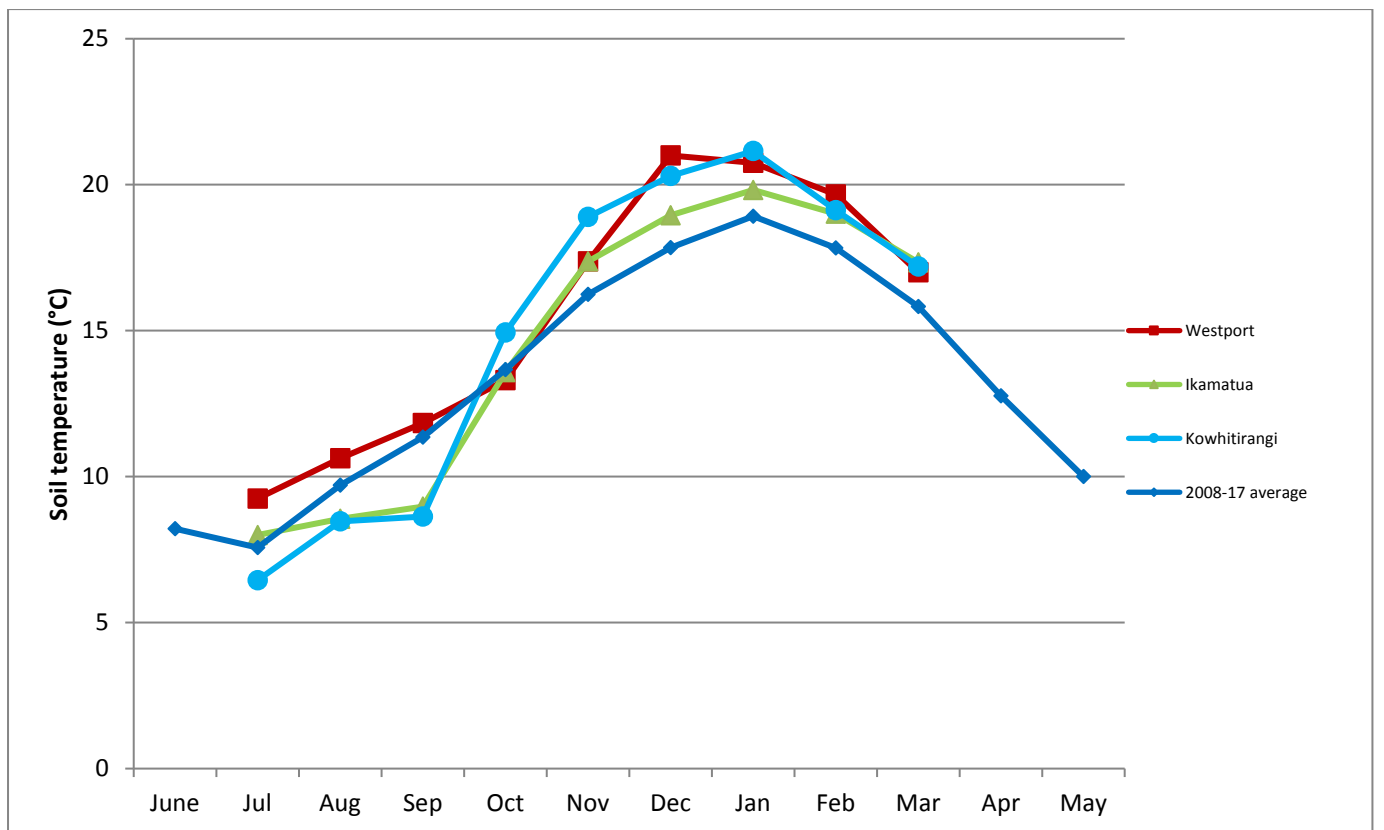
## Monthly Pasture Growth Rates



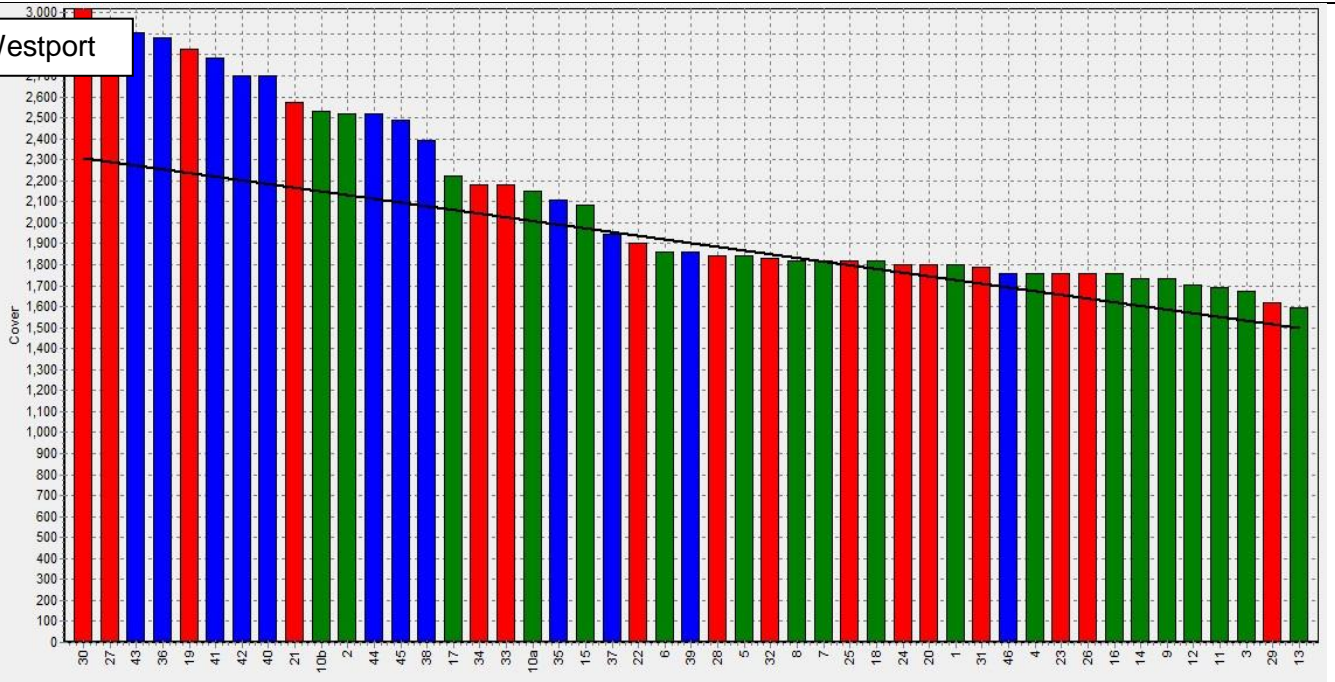
## Weekly Soil Temperature



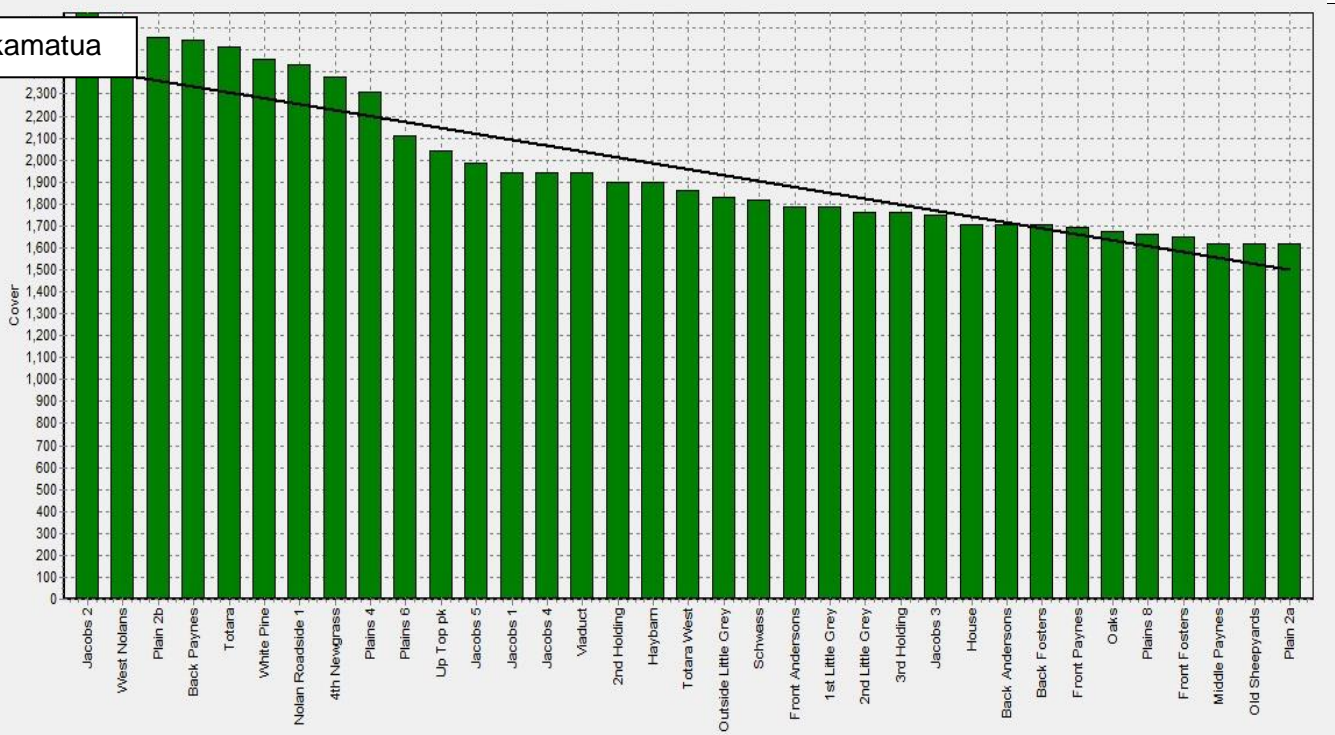
## Monthly Soil Temperature



### Westport



### Ikamatua



### Kowhitirangi

# Westport

Description	Date	RPM	% DM	% Prot	% Lipid	% ADF	% NDF	Sol Sugar	OMD %	MJME /kg
42	5/6/2017	10.0	16.7	37.8	5.4	20.4	43.6	5.1	>85	>12.7
44	3/8/2017	14.8	20.0	27.3	5.2	22.9	46.4	8.0	84.6	12.4
4	4/9/2017	10.3	15.4	31.9	5.3	22.4	42.2	5.9	88.5	12.9
26	3/10/2017	13.8	11.8	30.1	3.8	23.7	49.8	5.5	91.2	>12.7
40	30/10/2017	11.4	13.5	26.9	10.9	40.0	6.4			11.8
3	4/12/2017	11.7	21.3	17.9	3.4	30.0	57.3	11.7	79.5	11.6
46	15/1/2018	10.7	15.6	30.6	3.2	26.8	58.1	1.1	>85	12.4
5	5/2/2018	11.3	16.3	27.3	2.7	27.7	55.3	4.5	80.6	11.8
30	5/3/2018	11.4	10.6	29.3	2.1	27.6	48.5	1.3	85	12.4



Kowhitirangi

Description	Date	RPM	% DM	% Prot	% Lipid	% ADF	% NDF	Sol Sugar	OMD %	MJME/kg
6	7/6/2017	10.1	15	24.2	5	18.8	34.9	18.8	>85	>12.7
10	3/8/2017	10.7	17.6	21.0	4.7	25.2	44.8	15.4	80.9	11.6
21	6/9/2017	10.6	15.4	23.6	3.8	22.8	42.4	14.3	89.1	>12.7
4	5/10/2017	9.9	13.8	21.5	4.4	21.3	37.9	16.1	89.0	>12.7
2	1/11/2017	10.4	15.6	21.0	9.5	41.6	11.2			12.1
33	6/12/2017	12.3	19.1	24.6	4.2	24.3	55.1	9.2	84.9	12.4
27	17/1/2018	14.3	12.0	27.5	3.9	25.4	53.8	4.3	84.2	12.3
16	7/2/2018	13.9	14.6	24.1	3.4	25.9	47.8	6.2	81.4	11.9
52	7/3/2018	12.7	13.7	31.7	4.4	23	46.8	5.2	89.9	>12.7