

Westland Monitor Farm Project

Weekly Update as at week ending Wednesday 14th November 2018

CO comment

Many farms will now be completing the first three weeks of mating, so now's a good time to check how things are tracking. The target three-week submission rate is 90%. Keep everyone focussed on heat detection – reapply heat detection aids (paint or otherwise). Keep up with regular paddock checks too. The weather will be helping but it will be the extra details will make a difference to your mating results. Farmers are noticing seed head emergence. Maintaining consistent residuals (1500-1600) will ensure that the cows eat the seed head at immature stage, but beware that once seed head has emerged, pasture quality and palatability will decline. If pastures are allowed to become stalky, feed quality will decrease, and the herd's milk production will fall, even though there appears to be plenty of pasture. A rapid fall from peak production is usually a good indication that there has been poor pasture control.

There are a number of options available for managing surplus pasture, such as...

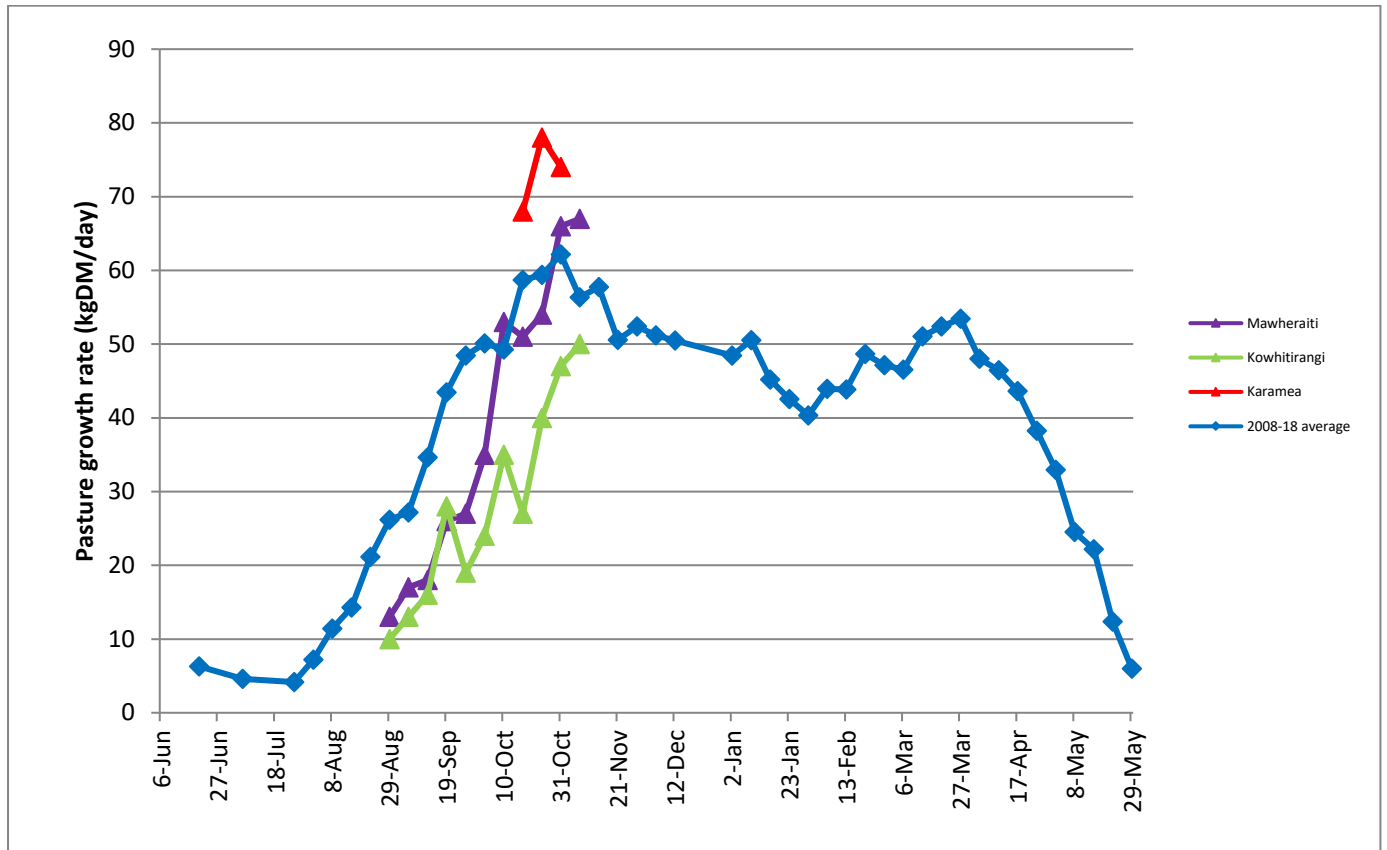
- Speeding up the rotation
- Make grass silage
- Take out paddocks for a summer crop

For more on managing a surplus visit <https://www.dairynz.co.nz/publications/farmfacts/farm-management/farmfact-1-38/>

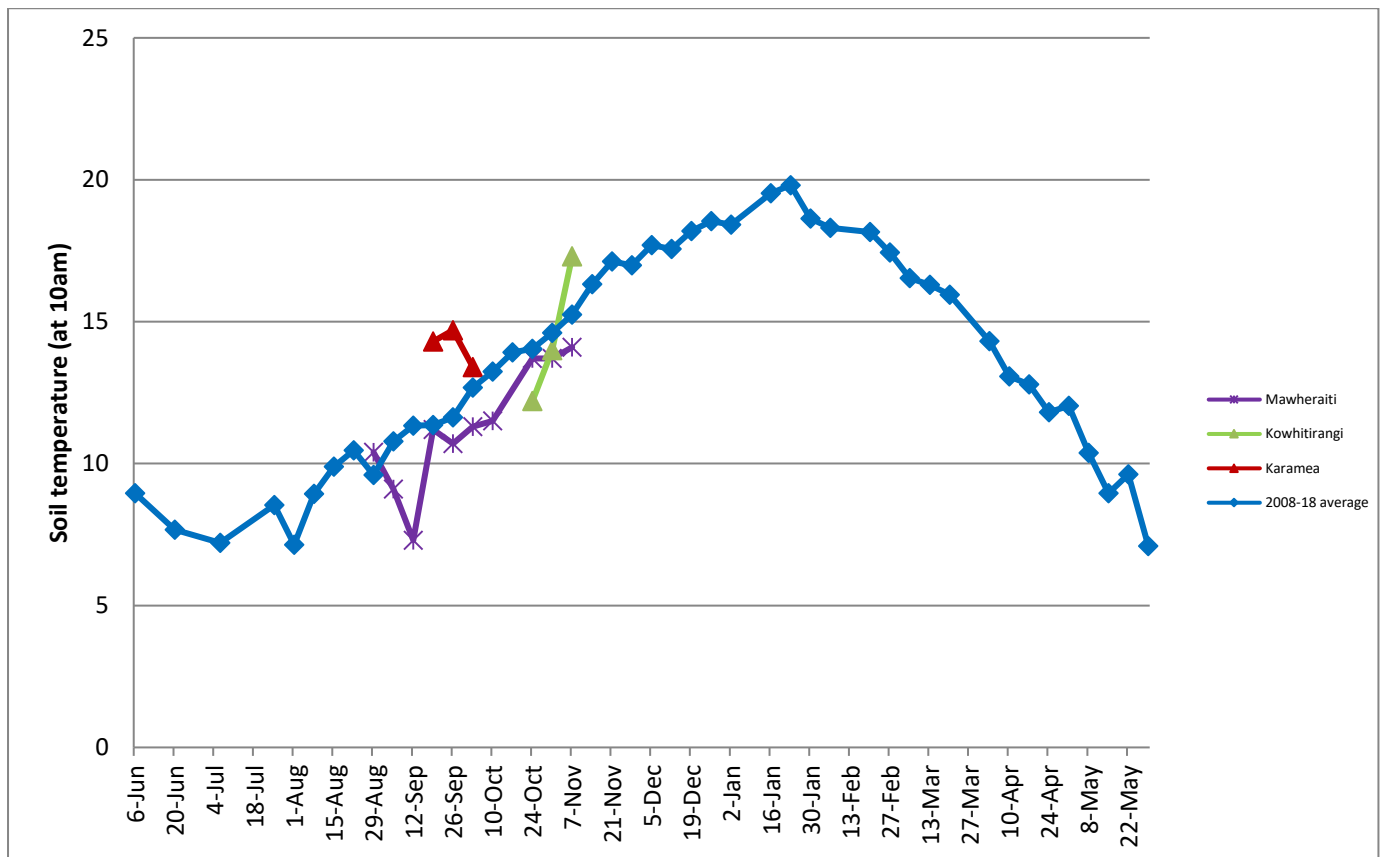
Farm Summary

	Mawheraiti	Kowhitirangi
Average cover (kg DM/ha)	2286	2192
APC (7 th Nov)	2199	2025
Rotation length (days)	23	23
Stocking rate	2.7	2.0
Percentage in milk	100	100
Milksolids kg/cow	2.09	2.07
Milksolids kg/ha	5.2	4.2
MS/cow (season to date)	128	125
MS/ha (season to date)	341	279
N (kg/ha) year to date		
Current N application rate kg N/ha	37	None
DM%	13.7	15.8
Pasture ME	>12.7	>12.7
Pasture NDF	43.8	47.6
Pasture CP	22.7	27.3
Target Intake (kg DM/cow/d)	20	18
Supplement (kg/cow/day)	0	2.1
Soil temperature (°C)	14.1	17.3
Growth Rate (kg DM/day)	67	50
Rainfall	93	220
Conditions for farmwalk	Fine and warm	Hot and fine today but heavy rain earlier in the week; flooding with 60% of farm underwater. A lot of silt in paddocks

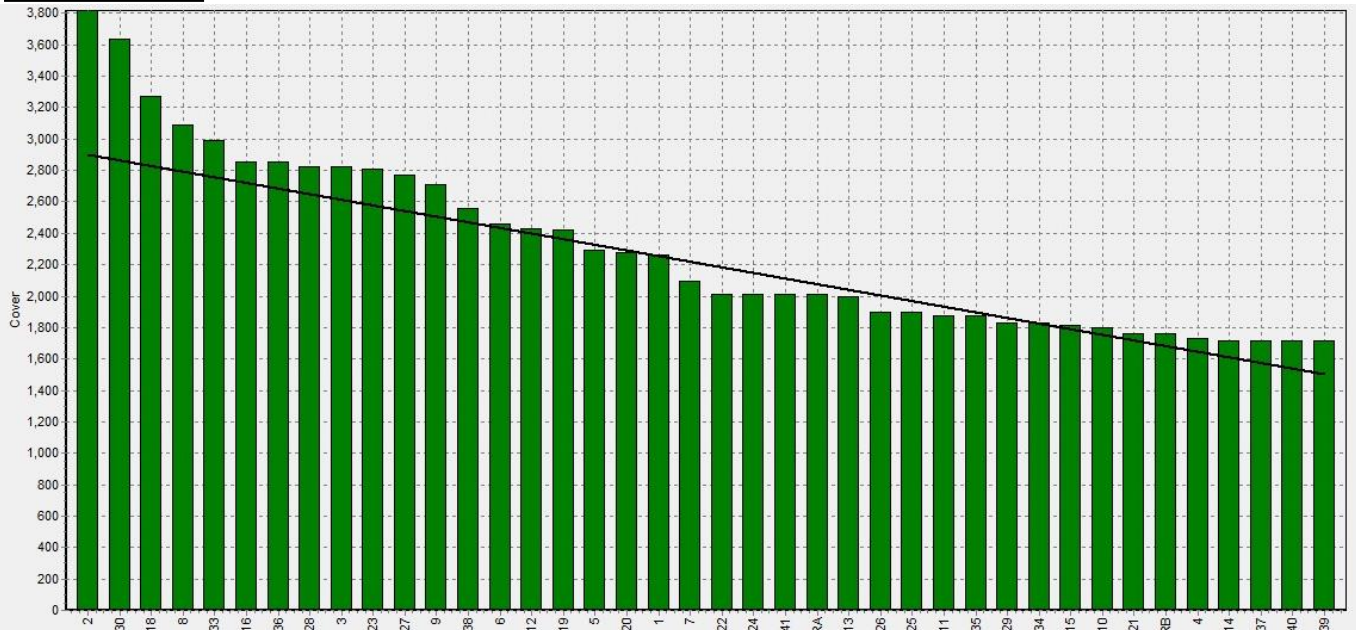
Weekly Pasture Growth Rates



Weekly Soil Temperature



Mawheraiti



Kowhitirangi

