

# Westland Monitor Farm Project

**Weekly Update** as at week ending Wednesday 21 November 2018

## CO comment

After some favourable growing conditions, pasture growth has been exceeding stock demand and some useful feed surpluses have developed. Maintaining pasture quality will need to be an ongoing prime focus. The tendency will be for residual grazing height to lift, which will impact quality into the next grazing round. Maintaining pasture quality with regular pasture monitoring and achieving a consistent residual will be paramount to maintaining current production levels. A rapid decline in milk production from the peak can indicate a drop in pasture quality. If pasture quality drops, production will fall even though there appears to be a lot of pasture available. High quality pasture has less than 20% dead material in the base, less than 10% seed head and greater than 60-70% green leaf material.

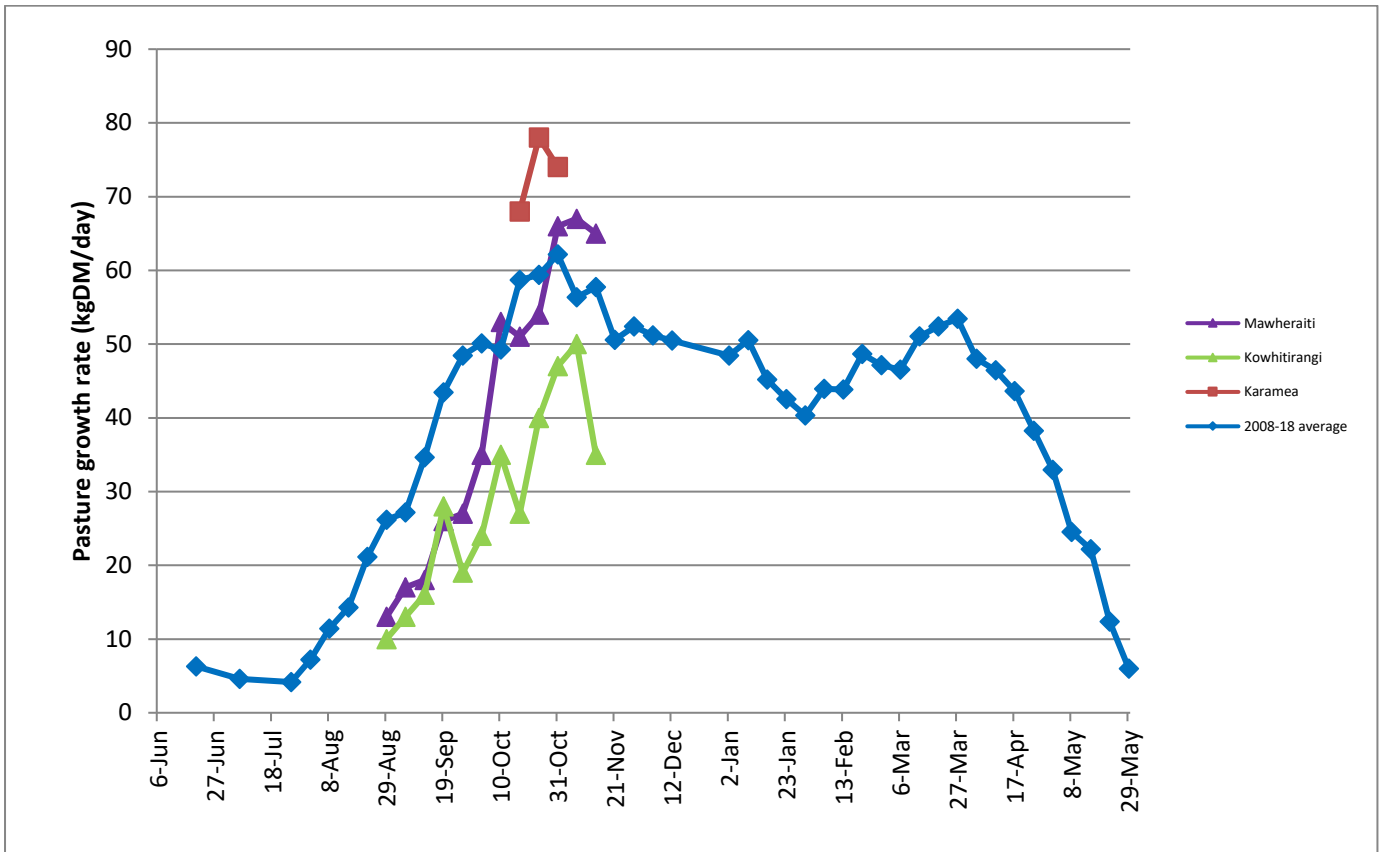
DairyNZ's Tiller Talk follows the progress of 19 farmers from around the country as they work to increase their profit through better pasture management.

They have given an update on what they think is critical to success at present. To have a look visit <https://www.dairynz.co.nz/feed/pasture-management/tiller-talk/tiller-talk-update/>

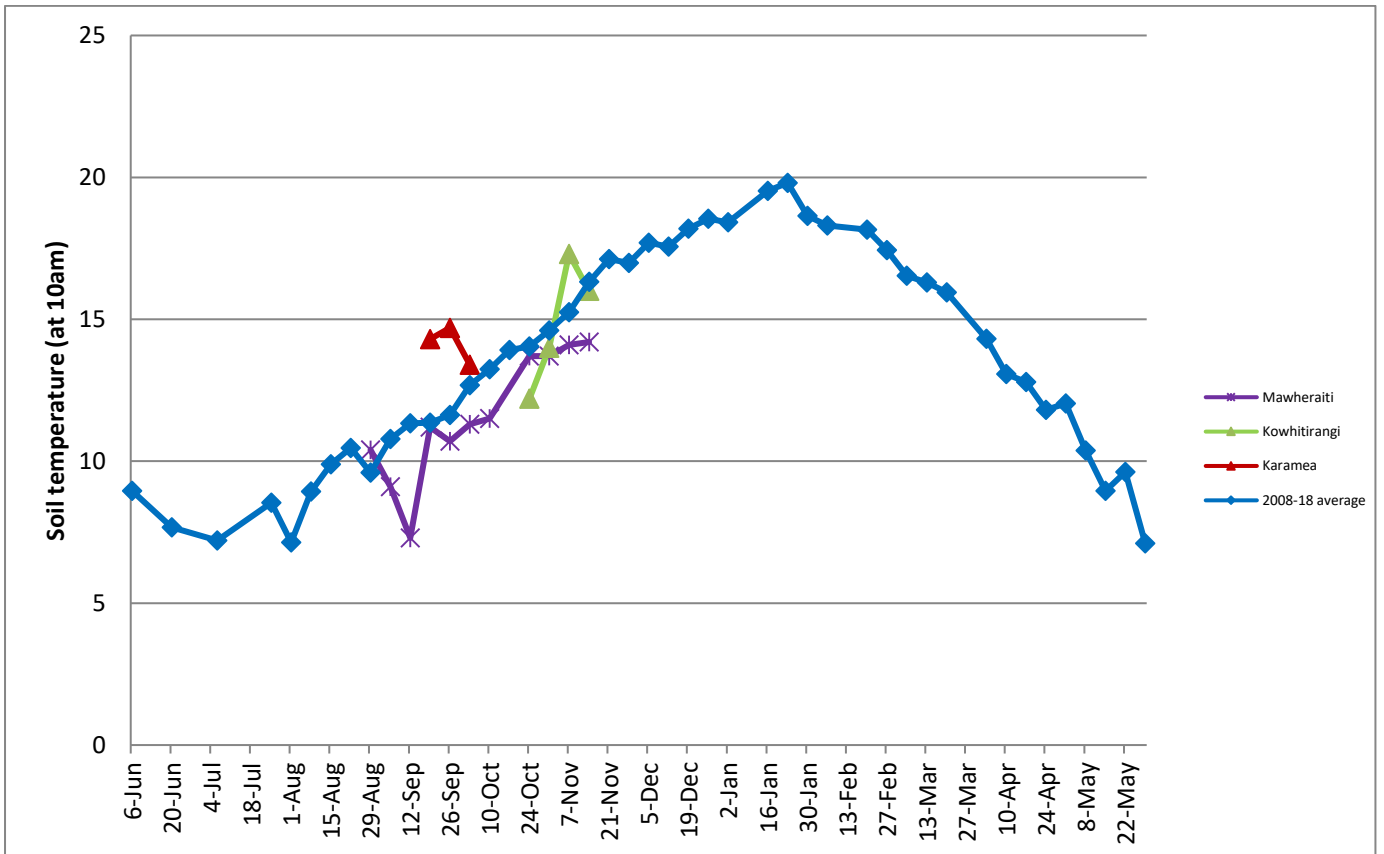
## Farm Summary

	Mawheraiti	Kowhitirangi
Average cover (kg DM/ha)	2312	2100
APC (14 <sup>th</sup> Nov)	2286	2192
Rotation length (days)	23	26
Stocking rate	3.1	2.4
Percentage in milk	100	100
Milksolids kg/cow	1.98	1.81
Milksolids kg/ha	4.8	3.7
MS/cow (season to date)	142	145
MS/ha (season to date)	384	305
N (kg/ha) year to date		102
Current N application rate kg N/ha	28	22
	5 Nov	7 Nov
DM%	13.7	15.8
Pasture ME	>12.7	>12.7
Pasture NDF	43.8	47.6
Pasture CP	22.7	27.3
Target Intake (kg DM/cow/d)	20	19
Supplement (kg/cow/day)	0	2.0
Soil temperature (°C)	14.2	16
Growth Rate (kg DM/day)	65	35
Rainfall	12	56
Conditions for farmwalk	Fine and cold	Stunning day
Comments		

## Weekly Pasture Growth Rates



## Weekly Soil Temperature



# Mawheraiti

Farm Name:- STU AND DEB BLAND  
 Date Read :- 19/11/2018  
 Average Cover :- 2312 Kg DM/Ha  
 Average Growth :- 65 Kg DM/Ha/Day

Block 1  
 Grazing Window



# Kowhitirangi

Farm Name:- ANNA AND JEREMY HART  
 Date Read :- 21/11/2018  
 Average Cover :- 2100 Kg DM/Ha  
 Average Growth :- 35 Kg DM/Ha/Day

Block 1  
 Grazing Window

