

# Westland Monitor Farm Project

Weekly Update as at week ending Wednesday 24th October 2018

## CO comment

There has been some welcome rain for many parts of the region this past week, although some are still falling somewhat short. It would be pertinent to use this time to think about potential summer dry strategies for your farm. Previous seasons have taught us that it is always good to have a plan and if it ends up it is not required, that is fine. You can find some tips on managing pasture through a dry period at <https://www.dairynz.co.nz/feed/seasonal-management/summer-management/summer-strategies/>

Many farmers on the West Coast are mentioning pasture quality as a focus at present and understand its effects on milk production. Some are choosing to top paddocks which have not been grazed down to residual targets. Mowing resets the residual but should be the last resort option as mowing reduces pasture regrowth compared with grazing. Be cautious not to mow the farm into a feed deficit.

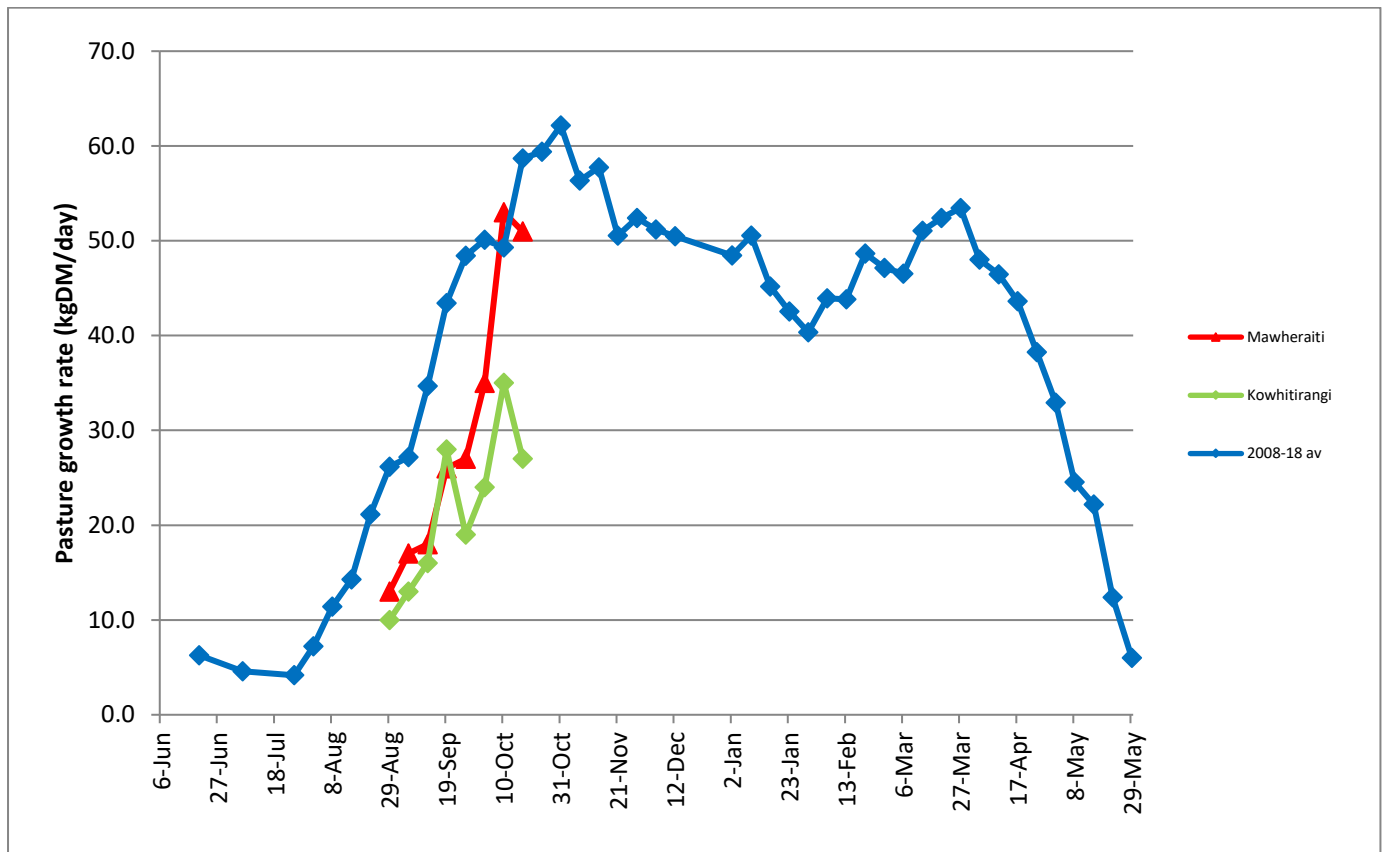
I am often asked about pre-graze mowing and whether it increases dry matter intake. A recent trial concluded that the dry matter present does not increase because of mowing and wilting. There is just less water present, not more dry matter. The rate of dry matter intake may increase after mowing but not the total intake. Cows will finish the feed offered quicker, but it's not more feed. All trials found that eating pre-mown pasture compared with unmown did not increase MS production.

## Farm Summary

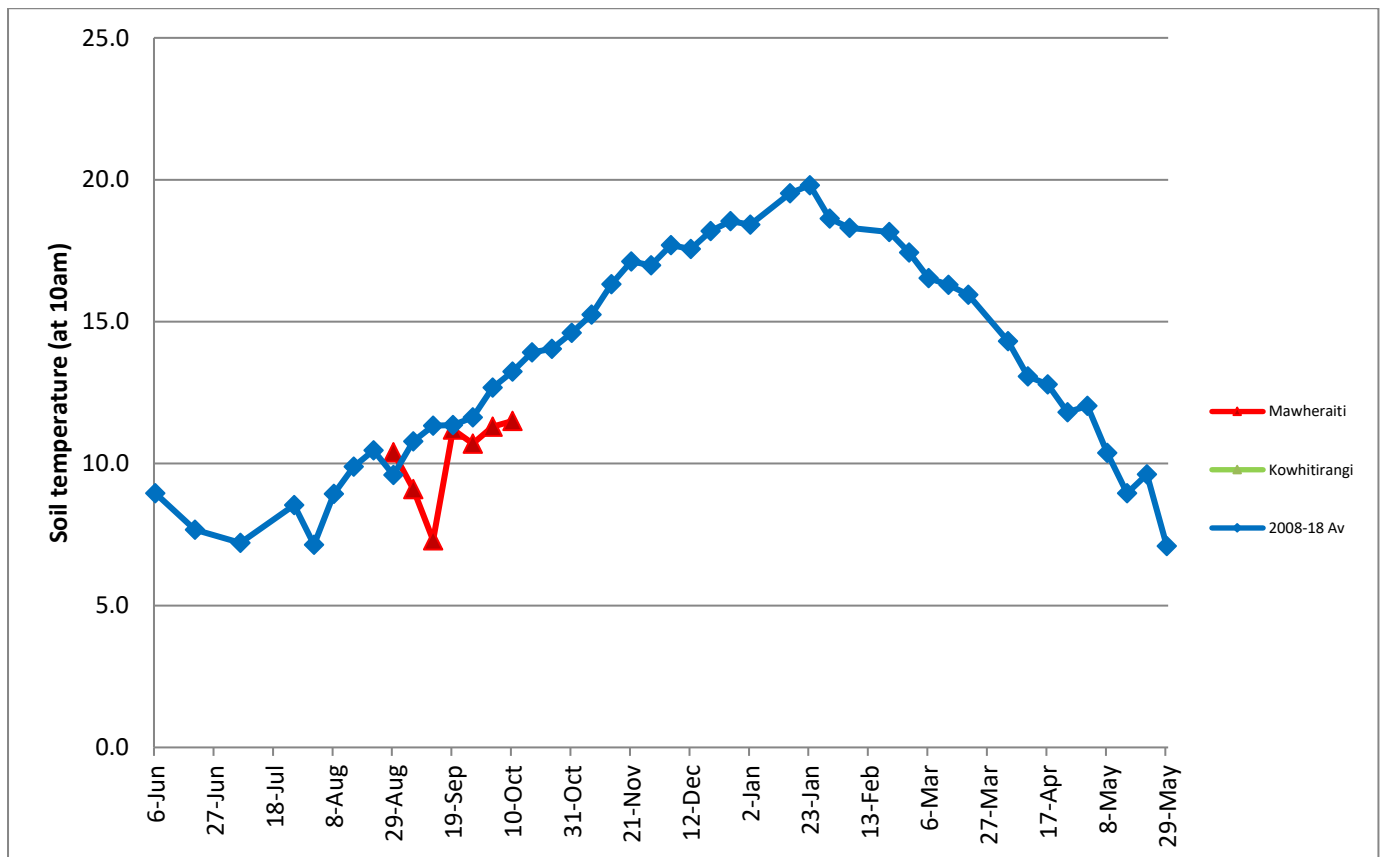
	Mawheraiti	Kowhitirangi
Average cover (kg DM/ha)	2222	1999
APC (17 <sup>th</sup> October)	2133	2025
Rotation length (days)	25	25
Stocking rate		
Percentage in milk		
Milksolids kg/cow	2.12	1.99
Milksolids kg/ha	5.9	4.0
MS/cow (season to date)		
MS/ha (season to date)	231	192
N (kg/ha) year to date		
Current N application rate kg N/ha	37	25
	1 <sup>st</sup> October	2 <sup>nd</sup> October
DM%	13.5	15.1
Pasture ME	>12.5	>12.5
Pasture NDF	47.1	43.2
Pasture CP	27.7	22.4
Target Intake (kg DM/cow/d)	20	18
Supplement (kg/cow/day)		2.4
Soil temperature (°C)	13.8	
Growth Rate (kg DM/day)	59	37
Rainfall	2	

NB: pasture quality data are for 1 sample collected from each farm

## Weekly Pasture Growth Rates



## Weekly Soil Temperature



## Mawheraiti



## Kowhitirangi

