

Westland Monitor Farm Project

Weekly Update as at week ending Wednesday 28th November 2018

CO comment

With 6 months of the season left and overdraft levels likely to be at peak, now is a good time to review and update your cash forecasts. This will allow you to have a good idea of what that might mean for the expected financial result at the end of the year. You can explore any potential opportunities to reduce expenditure and reprioritise where money is best spent. DairyBase can help you better understand your farm system and its performance, by comparing KPIs (key performance indicators) and determining what is working well, then identifying opportunities for improvement. With DairyBase you can:

- Better understand your farm's performance
- Identify opportunities to drive profit
- Make confident and effective decisions
- Track progress towards long and short-term goals
- Draw comparisons against other farms
- Keep a tight rein on farm working expenses.

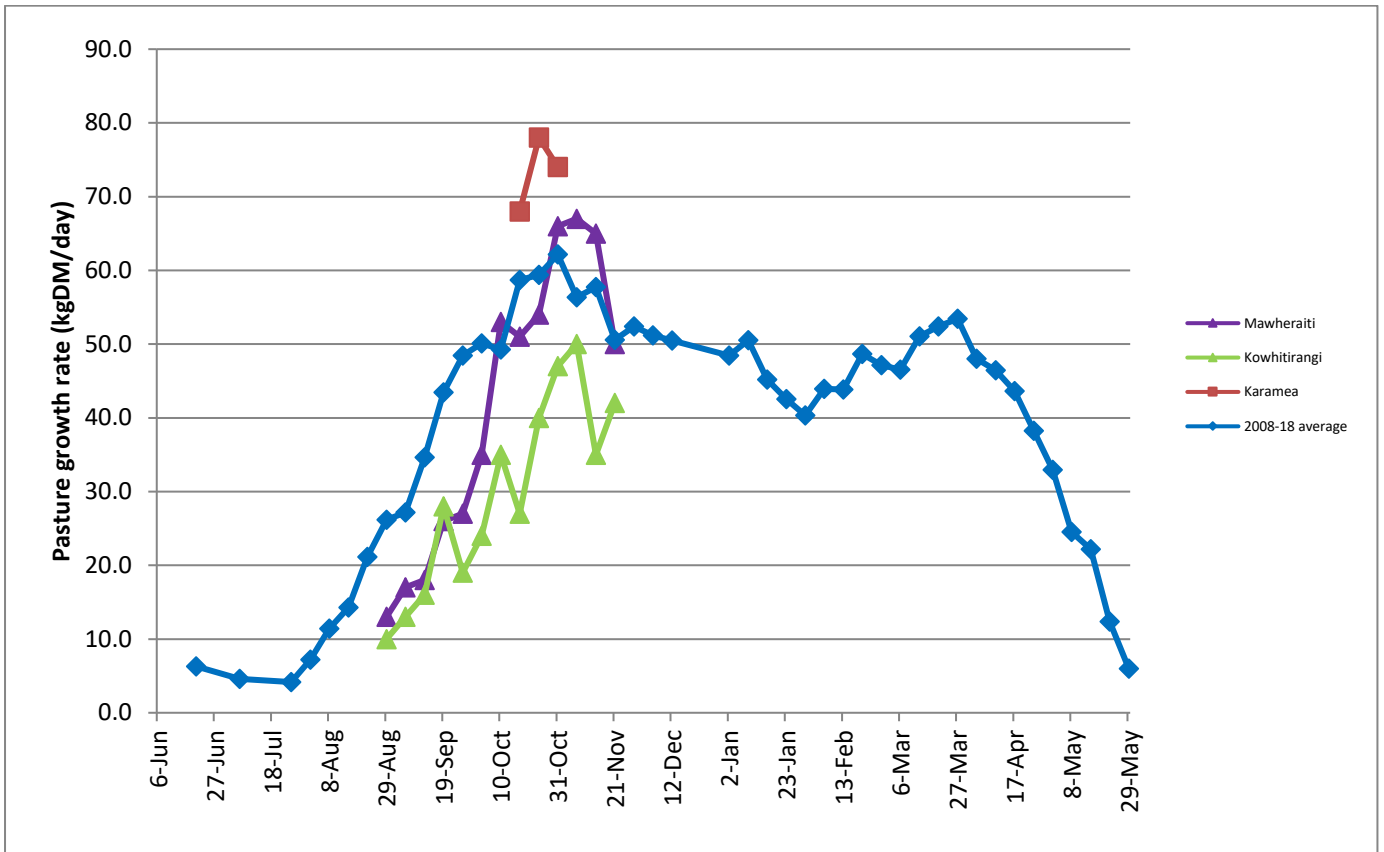
For more information on Dairybase visit <https://www.dairynz.co.nz/business/dairybase/>

Farm Summary

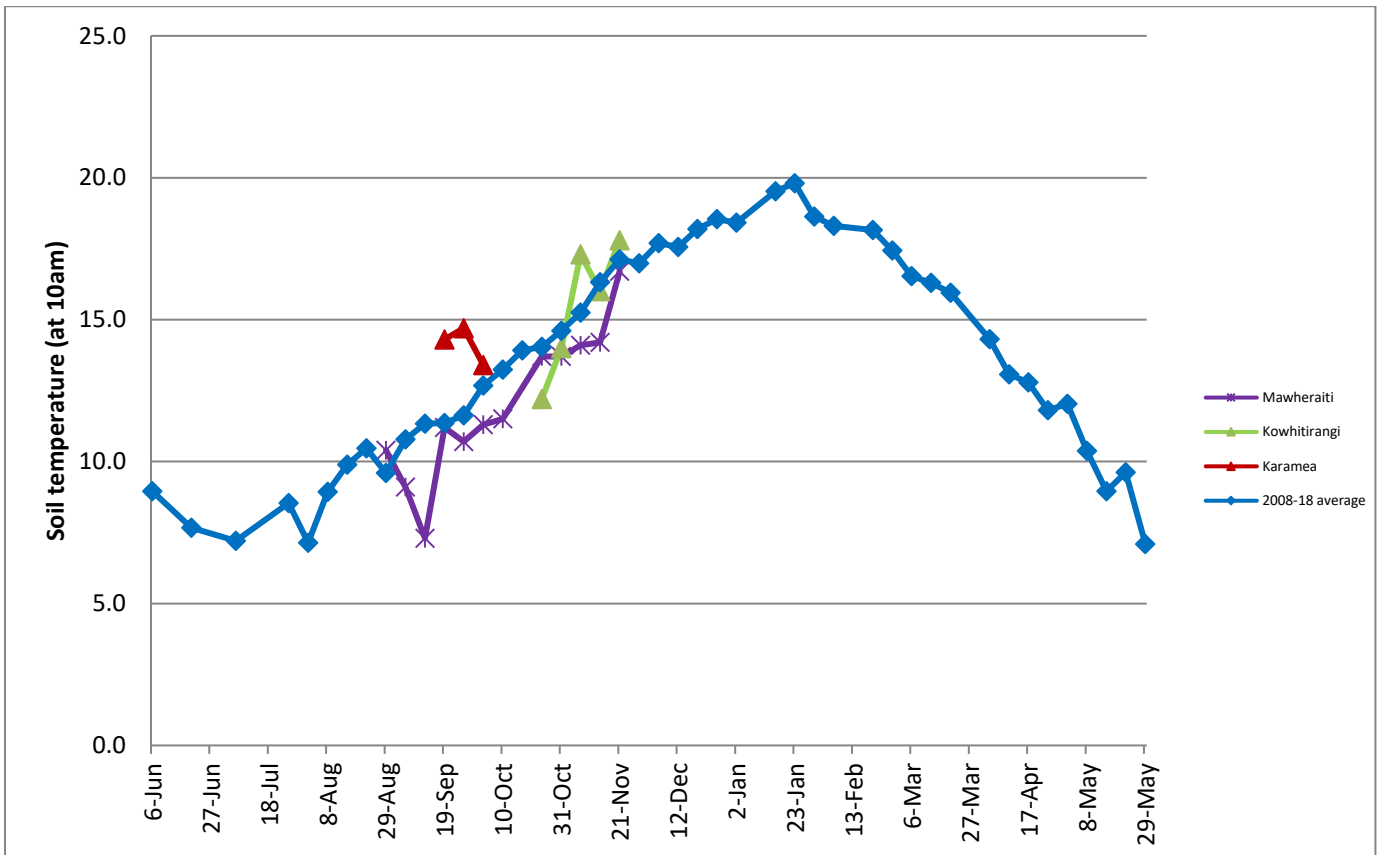
	Mawheraiti	Kowhitirangi
Average cover (kg DM/ha)	2207	2181
APC (21 st Nov)	2312	2100
Rotation length (days)	23	30
Stocking rate	2.7	2.0
Percentage in milk	100	100
Milksolids kg/cow	1.96	1.88
Milksolids kg/ha	4.9	3.8
MS/cow (season to date)	156	163
MS/ha (season to date)	392	331
N (kg/ha) year to date	59	102
Current N application rate kg N/ha	28	None
	5 Nov	7 Nov
DM%	13.7	15.8
Pasture ME	>12.7	>12.7
Pasture NDF	43.8	47.6
Pasture CP	22.7	27.3
Target Intake (kg DM/cow/d)	20	20
Supplement (kg/cow/day)	0	1.9
Soil temperature (°C)	16.7	17.8
Growth Rate (kg DM/day)	50	42
Rainfall	2	5
Conditions for farmwalk	Fine and warm	Hot day
Comments		

NB: pasture quality data are for 1 sample collected from each farm

Weekly Pasture Growth Rates



Weekly Soil Temperature



Mawheraiti



Kowhitirangi

