

# Westland Monitor Farm Project

**Weekly Update** as at week ending Wednesday 3<sup>rd</sup> October 2018

## CO comment

Pasture growth rates have lifted through most areas of the West Coast over the past few weeks and this has resulted in what may be a surplus of grass starting to appear on many farms. Have your grazing residuals been starting to lift on a consistent basis? Management of any pasture surplus will be critical to ensure pasture quality is maintained for subsequent grazing rounds. Any delays in getting surplus pasture ensiled through later identification of the pasture surplus will increase grazing pressure on the remaining grazing area and could lead to poorer quality silage and slower pasture regrowth on those areas out of the grazing round.

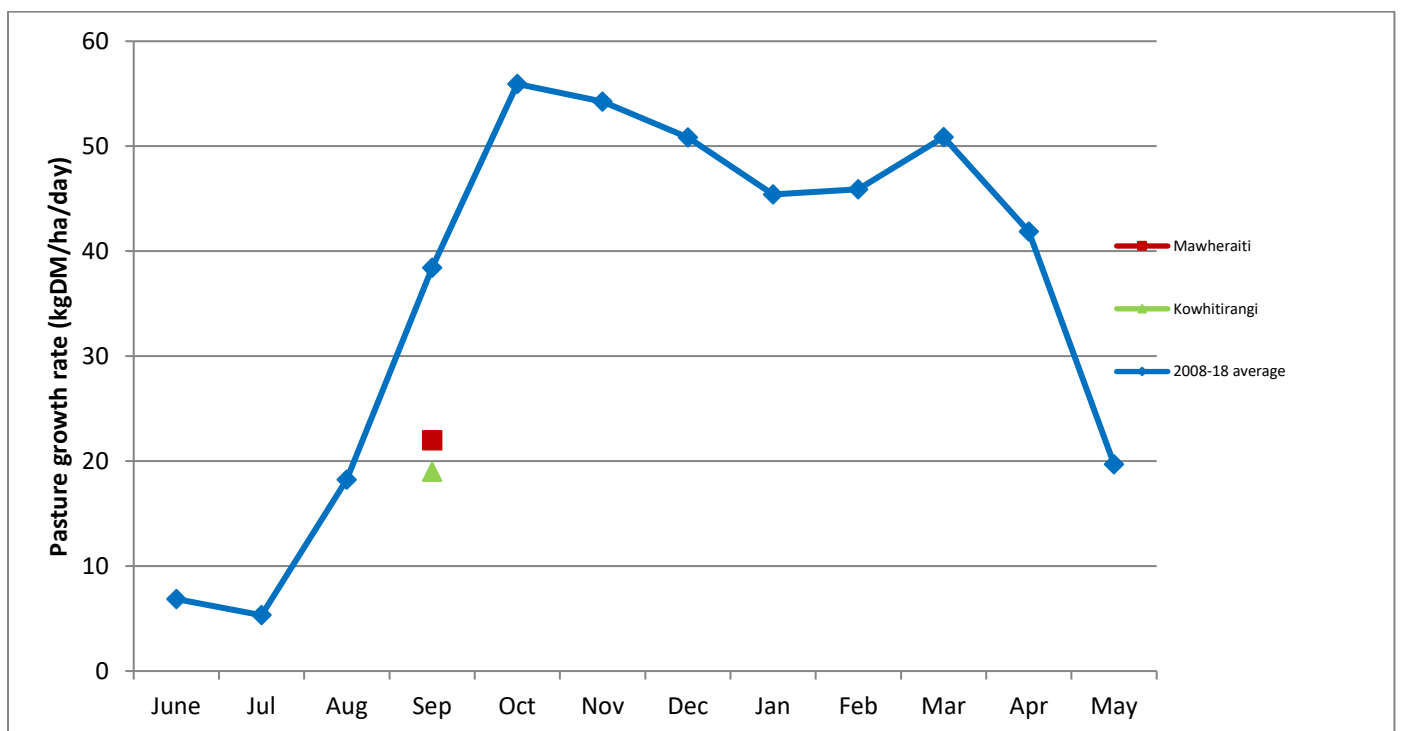
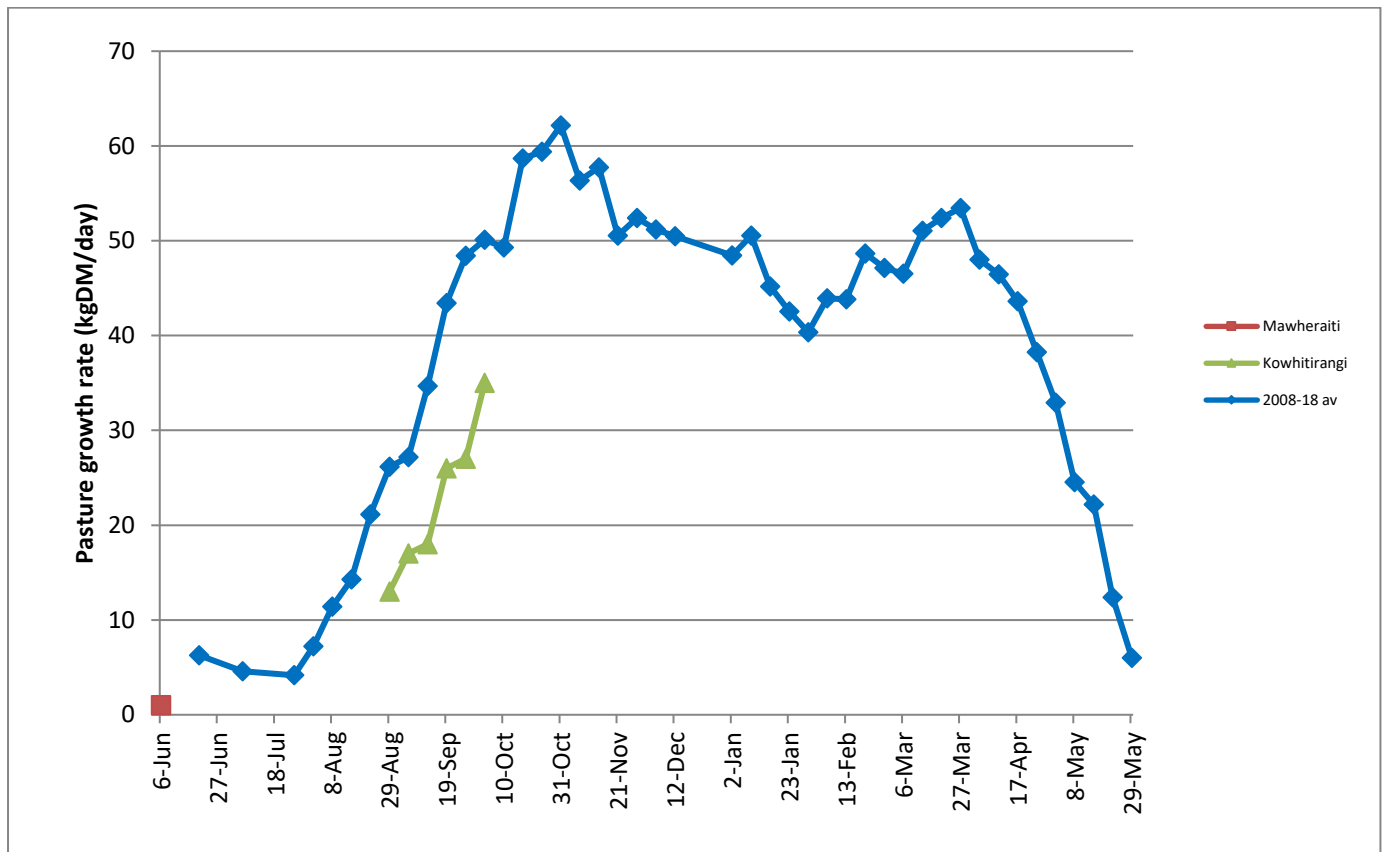
Don't forget that the industry target 3-week submission rate at mating is 90% and heat detection must be seen as a high priority job. Taking pre-mating heats is a key strategic tool in achieving this target, as is identifying and remedying reasons for non-cycling.

## Farm Summary

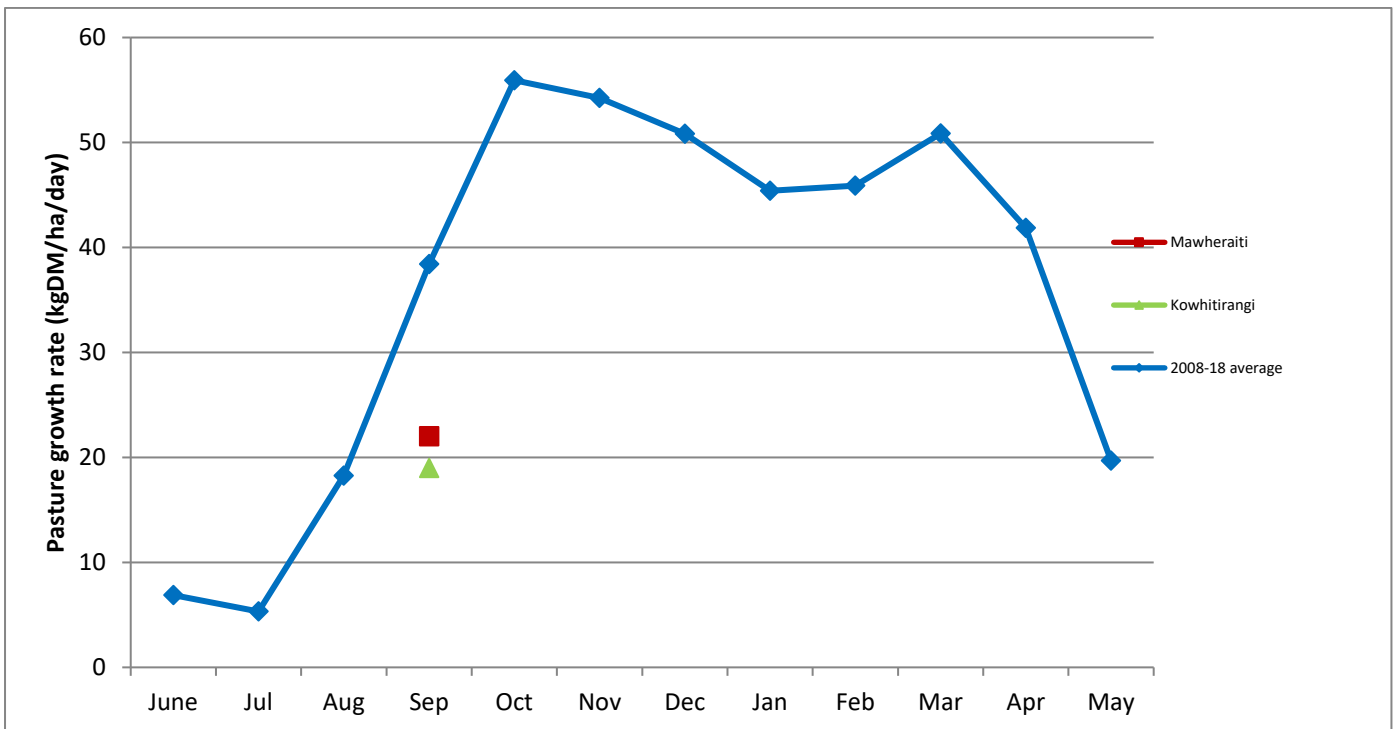
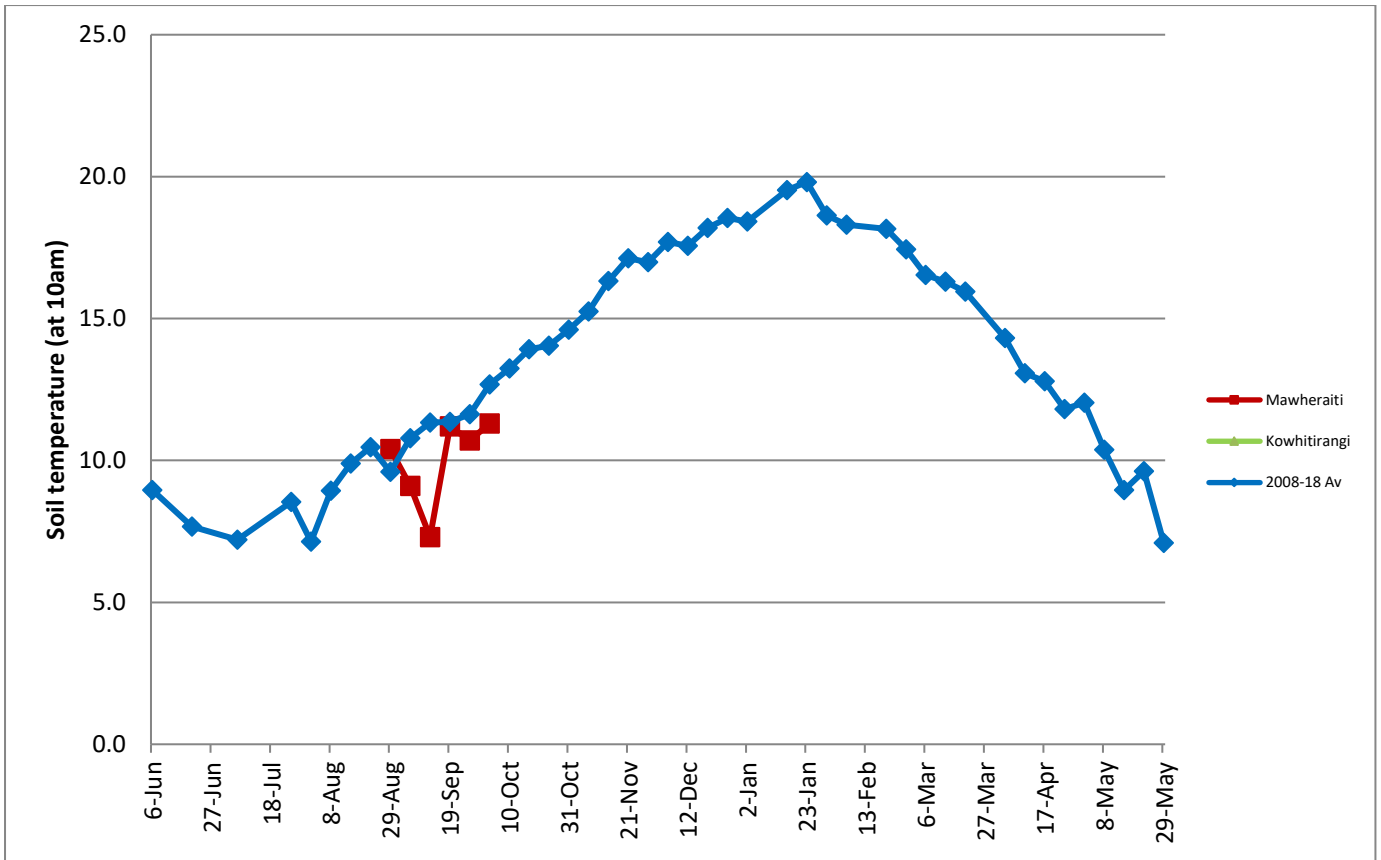
	Mawheraiti	Kowhitirangi
Average cover (kg DM/ha)	2120	1974
APC (26 September)	2111	1945
Rotation length (days)	40	33
Stocking rate	2.5	2.0
Percentage in milk		
Milksolids kg/cow	2.2	2.2
Milksolids kg/ha	4.6	4.3
MS/cow (season to date)	53.9	50
MS/ha (season to date)	32.2	30.2
N (kg/ha) year to date		
Current N application rate kg N/ha		
DM%		
Pasture ME		
Pasture NDF		
Pasture CP		
Target Intake (kg DM/cow/d)	20	18
Supplement (kg/cow/day)	2.7	2.4
Soil temperature (°C)	11.3	
Growth Rate (kg DM/day)	35	24
Rainfall	27	17
Conditions for farmwalk	Fine and warm	Fine and warm
Comments		

NB: pasture quality data are for 1 sample collected from each farm

# Weekly Pasture Growth Rates



## Weekly Soil Temperature



## Mawheraiti

Farm Name:- STU AND DEB BLAND  
 Date Read :- 1/10/2018  
 Average Cover :- 2120 Kg DM/Ha  
 Average Growth :- 35 Kg DM/Ha/Day



## Kowhitirangi

Farm Name:- ANNA AND JEREMY HART  
 Date Read :- 3/10/2018  
 Average Cover :- 1974 Kg DM/Ha  
 Average Growth :- 24 Kg DM/Ha/Day





