

Westland Monitor Farm Project

Weekly Update as at week ending Wednesday 31st October 2018

CO comment

Pasture growth rates through much of the West Coast are at or above current stock demands. The current pasture growth rates will continue to lead to the production of surplus feed on many farms. Grazing management will need to be top notch in assessing average pasture cover against the targeted level and monitoring the feed wedge target to ensure paddocks are dropped out of the grazing round for conservation. A failure to react quickly enough could impact on pasture quality for the next round, as well as delaying the time the supplement is harvested and the paddock able to return to the grazing round.

It is impossible to produce high quality silage from low quality pasture.

Making good supplement is essential for milk production and feeding if we are to get a dry period. Good pasture supplement should contain 16% crude protein, 70% digestibility of the Dry Matter, 30-35% DM for baleage or 25-30% DM for pit silage, 3.5-4.5 pH and >10 MJME/kg DM. This can all be tested through a lab to enable decisions to be made on whether quality is appropriate for milking or dry cows. Pasture supplement quality can also be assessed by sight and smell.

For more information about making pasture supplements visit

<https://www.dairynz.co.nz/feed/supplements/grass-silage/>

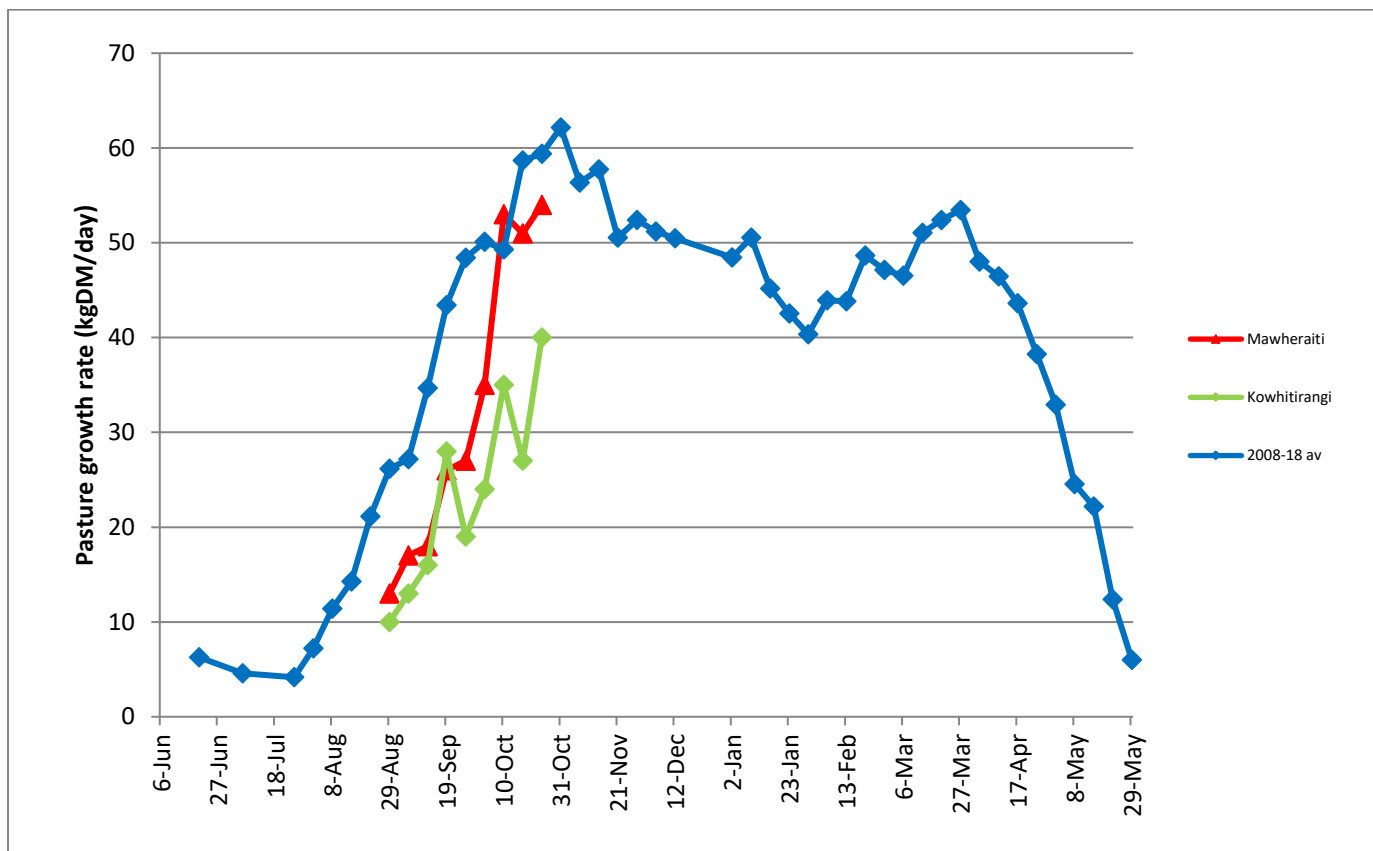
Farm Summary

	Mawheraiti	Kowhitirangi	Karamea
Average cover (kg DM/ha)	2335	2117	2550
APC	2222	1999	2550
Rotation length (days)	25	27	20
Stocking rate			
Percentage in milk	100	100	100
Milksolids kg/cow	2.06	2.15	2.07
Milksolids kg/ha	5.7	4.3	4.6
MS/cow (season to date)	99.5	101.2	
MS/ha (season to date)	269	222	
N (kg/ha) year to date			
Current N application rate kg N/ha		37	
	1 st October	2 nd October	
DM%	13.5	15.1	
Pasture ME	>12.5	>12.5	
Pasture NDF	47.1	43.2	
Pasture CP	27.7	22.4	
Target Intake (kg DM/cow/d)	20	18	
Supplement (kg/cow/day)	0.1	2.4	
Soil temperature (°C)	13.7		13.4
Growth Rate (kg DM/day)	54	40	78
Rainfall	10	58	10

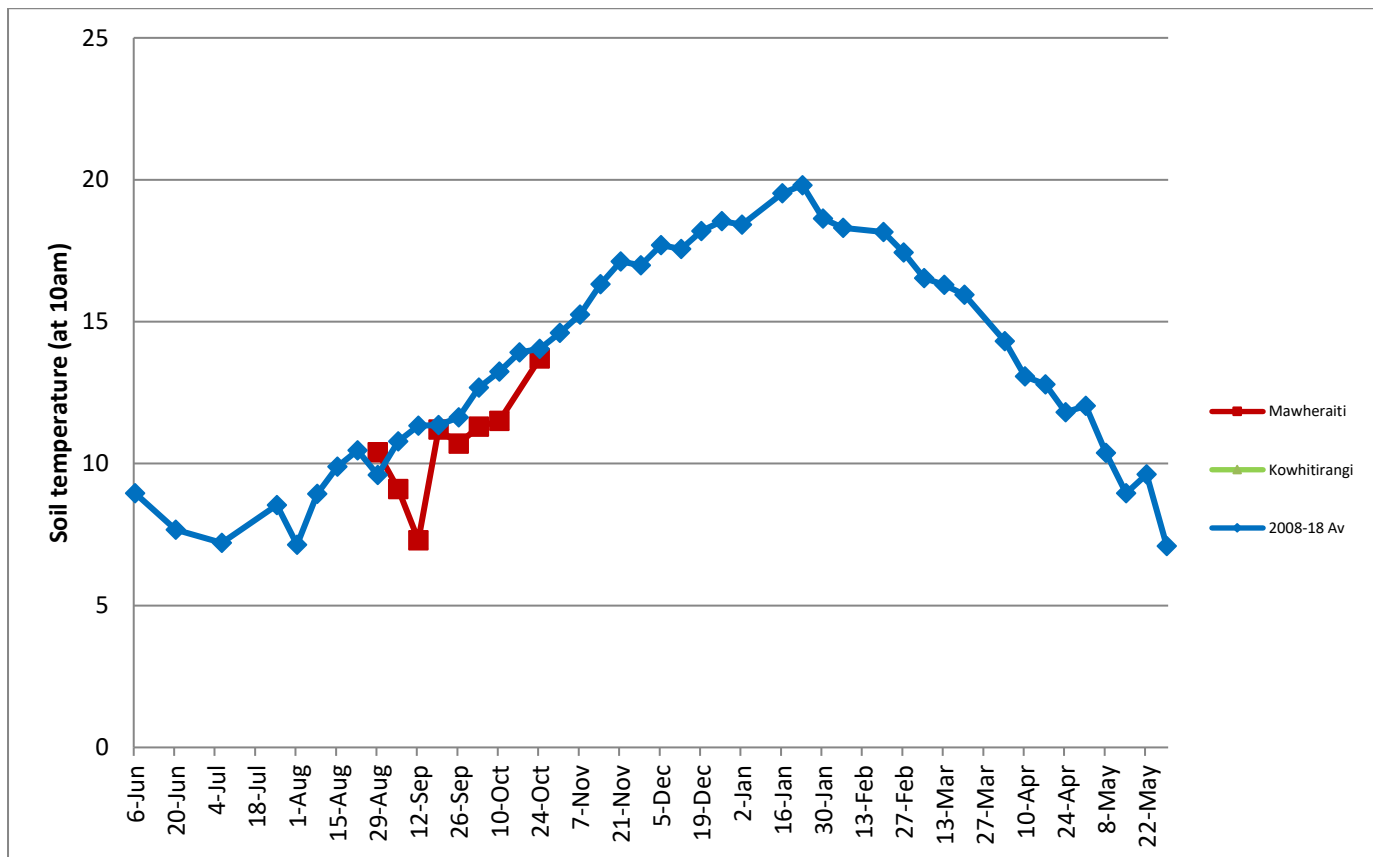
Conditions for farmwalk	Rain and cold	Frost then warm, lovely day	
Comments			

NB: pasture quality data are for 1 sample collected from each farm

Weekly Pasture Growth Rates



Weekly Soil Temperature



Mawheraiti



Kowhitirangi

