

# Westland Monitor Farm Project

**Weekly Update** as at week ending Wednesday 7<sup>th</sup> November 2018

## CO comment

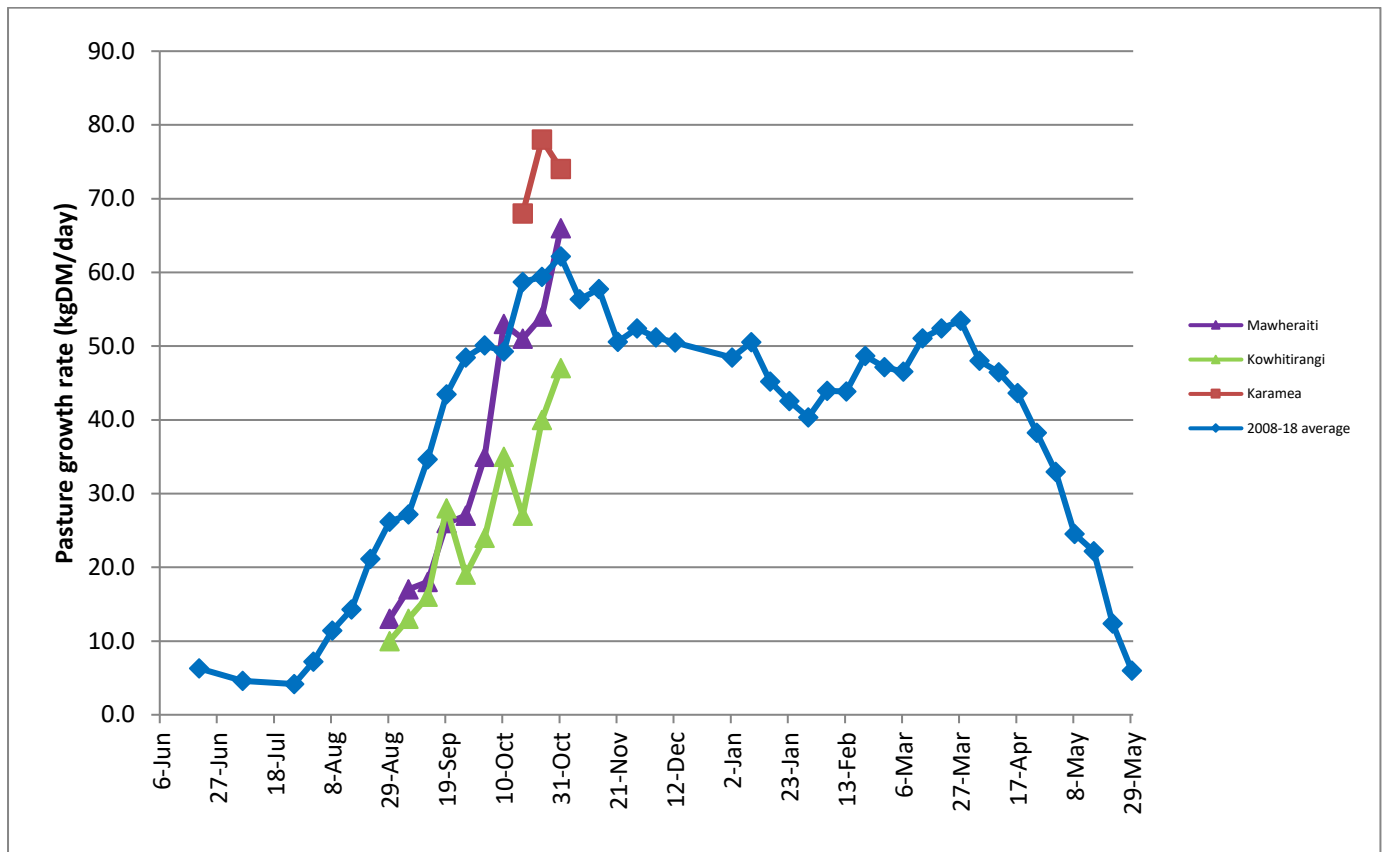
The recent deluge of rain will have done nothing for anything we are trying to achieve on farm at present. As I write this early on Friday morning, South Westland has experienced approx. 340 ml of rain in the last 24hrs. The severe weather warning has been lifted for this area but remains in place for Buller. With mating underway on many farms it is important not to restrict intakes as this could will affect 'cow condition' and can also compromise mating performance. For some farmers with damage to paddocks and fencing, this may mean you are unable to graze paddocks that were coming up in the rotation plan. The introduction of supplement may be required to assist in keeping the cows fully fed. Periods of very wet weather can have an effect on mating. Firstly, cows have less obvious heats which are more difficult to pick up, and secondly, underfeeding will mean weight loss at a time when we like to see cows gain weight. Having said that, we know from previous trials that dairy cows are pretty resilient at the critical time of mating, provided they were in good condition initially. The positive is that this event is set to be short lived and I can see some fine weather for the whole West Coast on Metservice this week. Check out the latest forecast for your area [here](#).

## Farm Summary

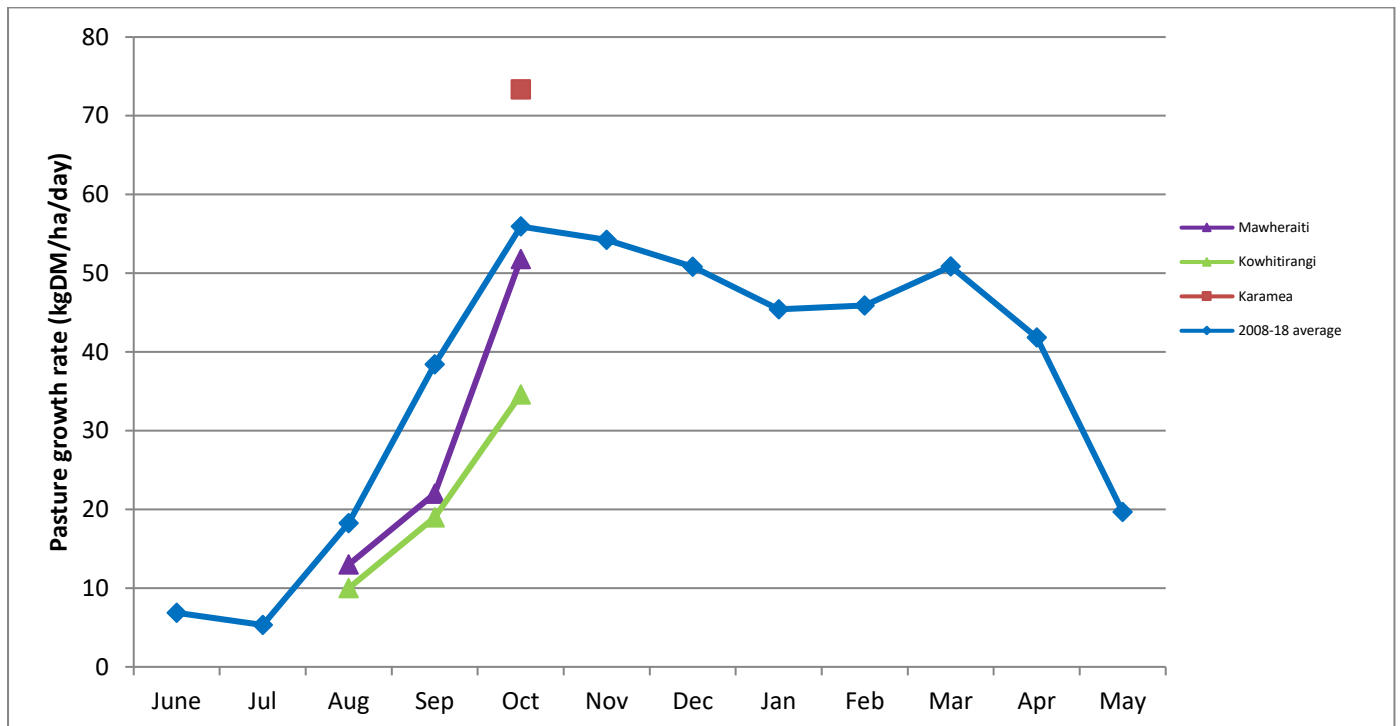
	Mawheraiti	Kowhitirangi	Karamea
Average cover (kg DM/ha)	2463	2148	2596
APC (31 Oct)	2335	2117	2550
Rotation length (days)	23	23	20
Stocking rate	3.0	2.4	
Percentage in milk	100	100	100
Milksolids kg/cow	2.08	2.01	2.07
Milksolids kg/ha	5.8	4.0	4.6
MS/cow (season to date)	114	113	
MS/ha (season to date)	308	250	
N (kg/ha) year to date			
Current N application rate kg N/ha	37		20
DM%			
Pasture ME			
Pasture NDF			
Pasture CP			
Target Intake (kg DM/cow/d)	20	18	
Supplement (kg/cow/day)	1.7	2.0	2.4
Soil temperature (°C)	13.7	14	13.4
Growth Rate (kg DM/day)	66	47	74
Rainfall	46	98	59
Conditions for farmwalk	Fine and cool	Beautiful day	
Comments			

NB: pasture quality data are for 1 sample collected from each farm

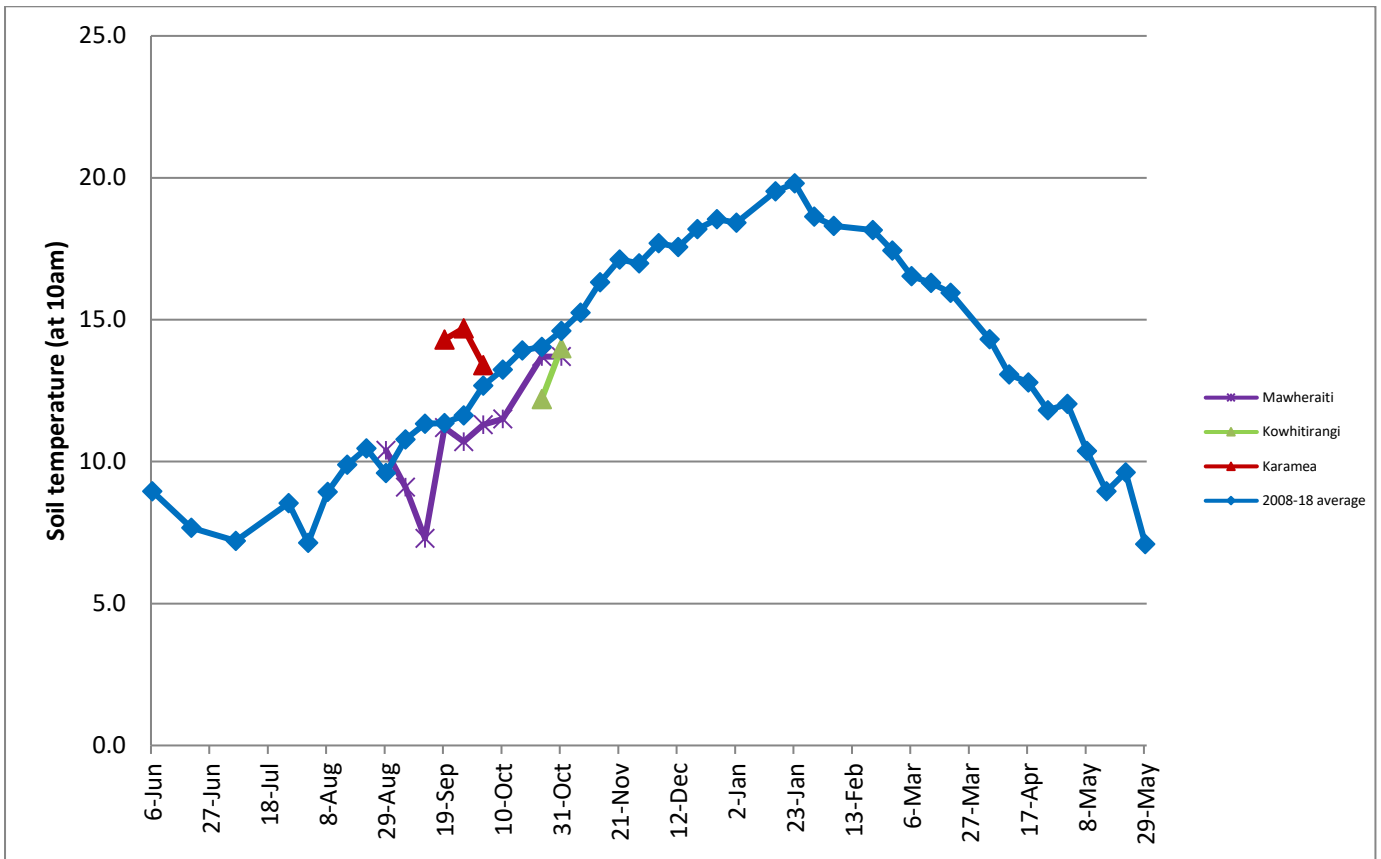
## Weekly Pasture Growth Rates



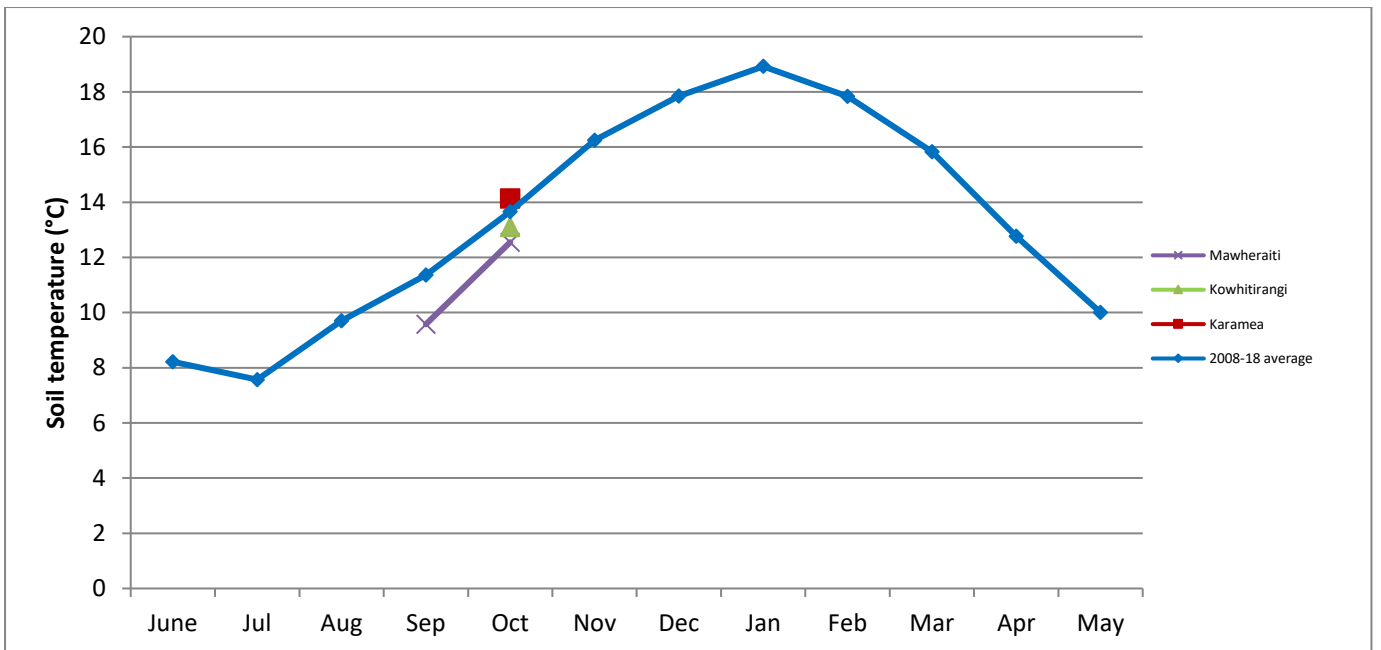
## Monthly Pasture Growth Rates



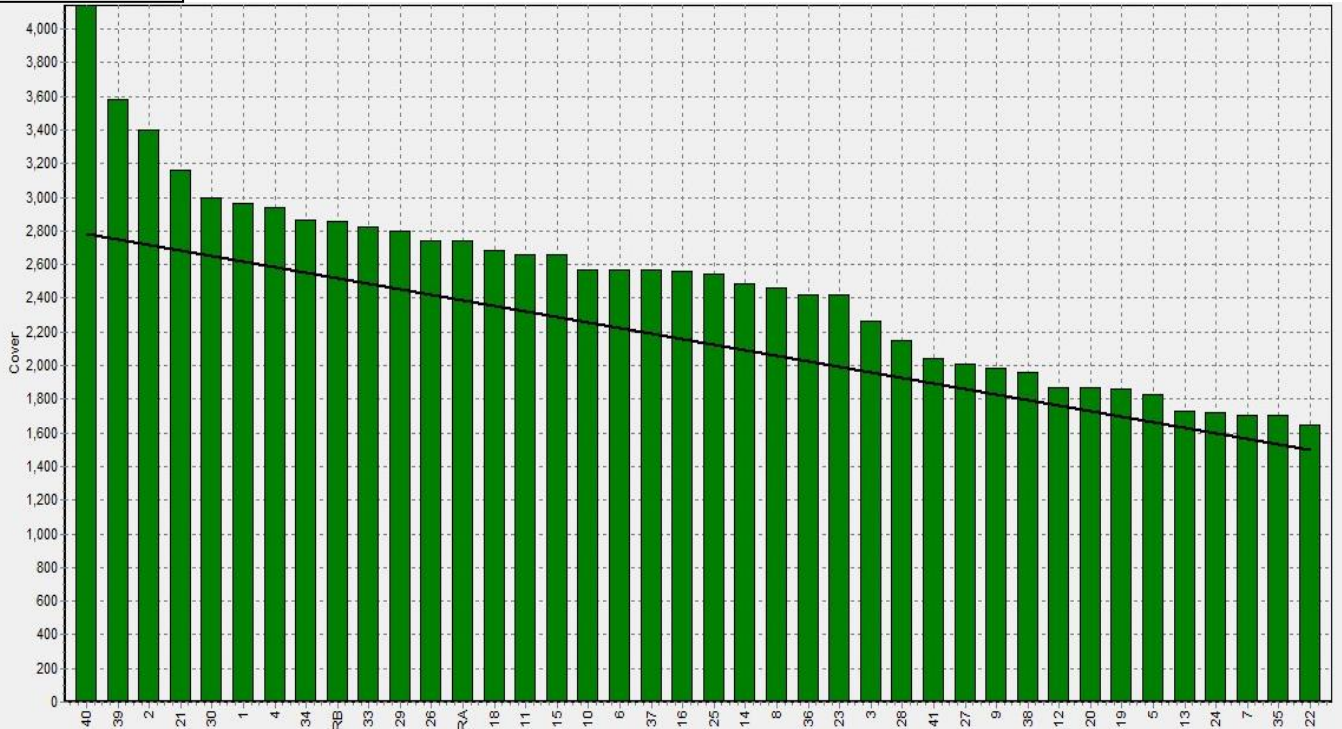
## Weekly Soil Temperature



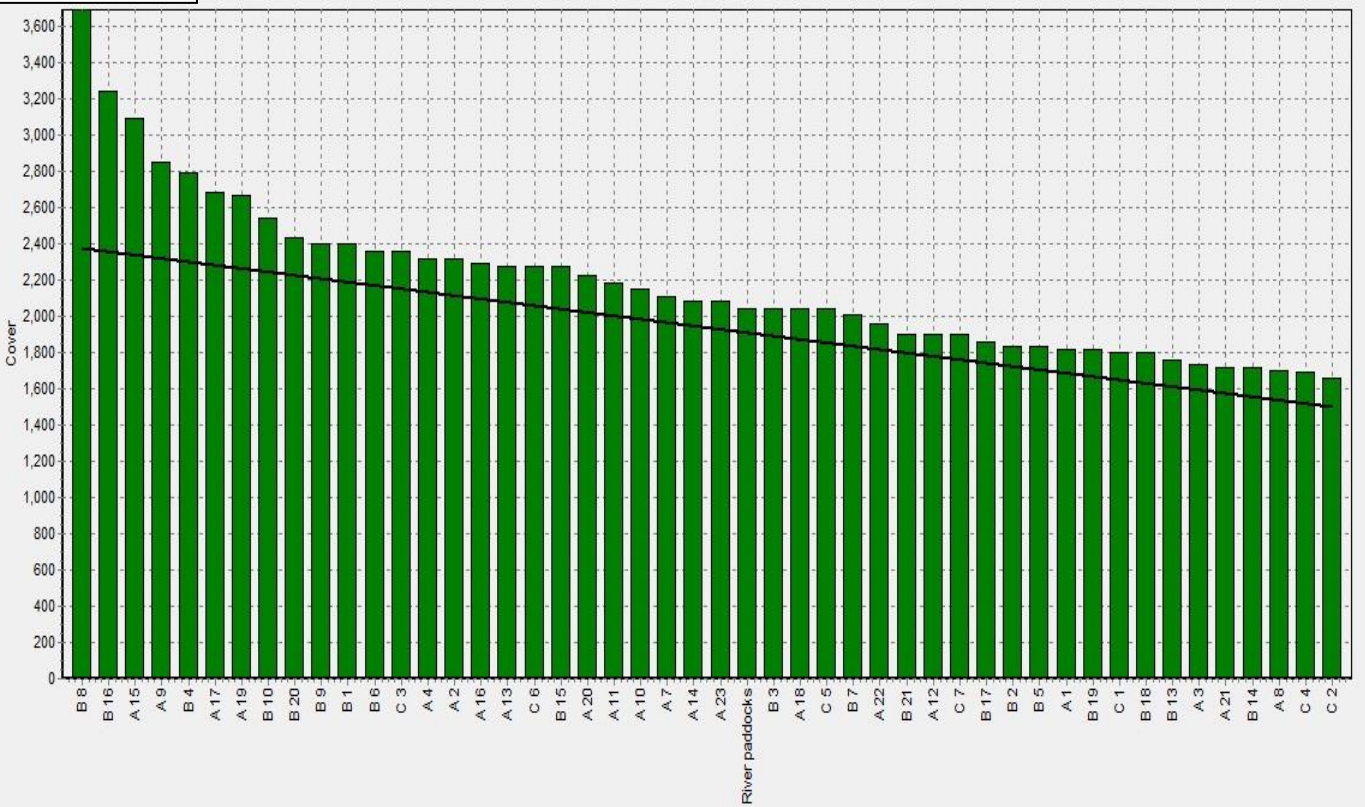
## Monthly Soil Temperature



## Mawheraiti



## Kowhitirangi



# Kowhitirangi

Description	Date	RPM	% DM	% Prot	% Lipid	% ADF	% NDF	Sol Sugar	OMD %	MJME/kg
Paddock 5	7/9/2018		17.4	26.8	4.9	18.9	39.3	18.2	91.6	13.4
Paddock 14	2/10/2018	12.0	15.1	22.4	4.4	20.7	43.2	18	>85	>12.7