

# Westland Monitor Farm Project

**Weekly Update** as at week ending Wednesday 1<sup>st</sup> May 2019

## CO Comment

With the season coming to a close, it is important to continue to revise and update your autumn feed budget to reflect the situation on your farm and ensure you have sufficient feed to continue milking if that is what you choose to do.

Revisit your winter feed budget to confirm feed availability. If winter feed levels are going to be tight, consider setting your wintering mobs up based on BCS and feed individual groups according to the BCS gain that is required.

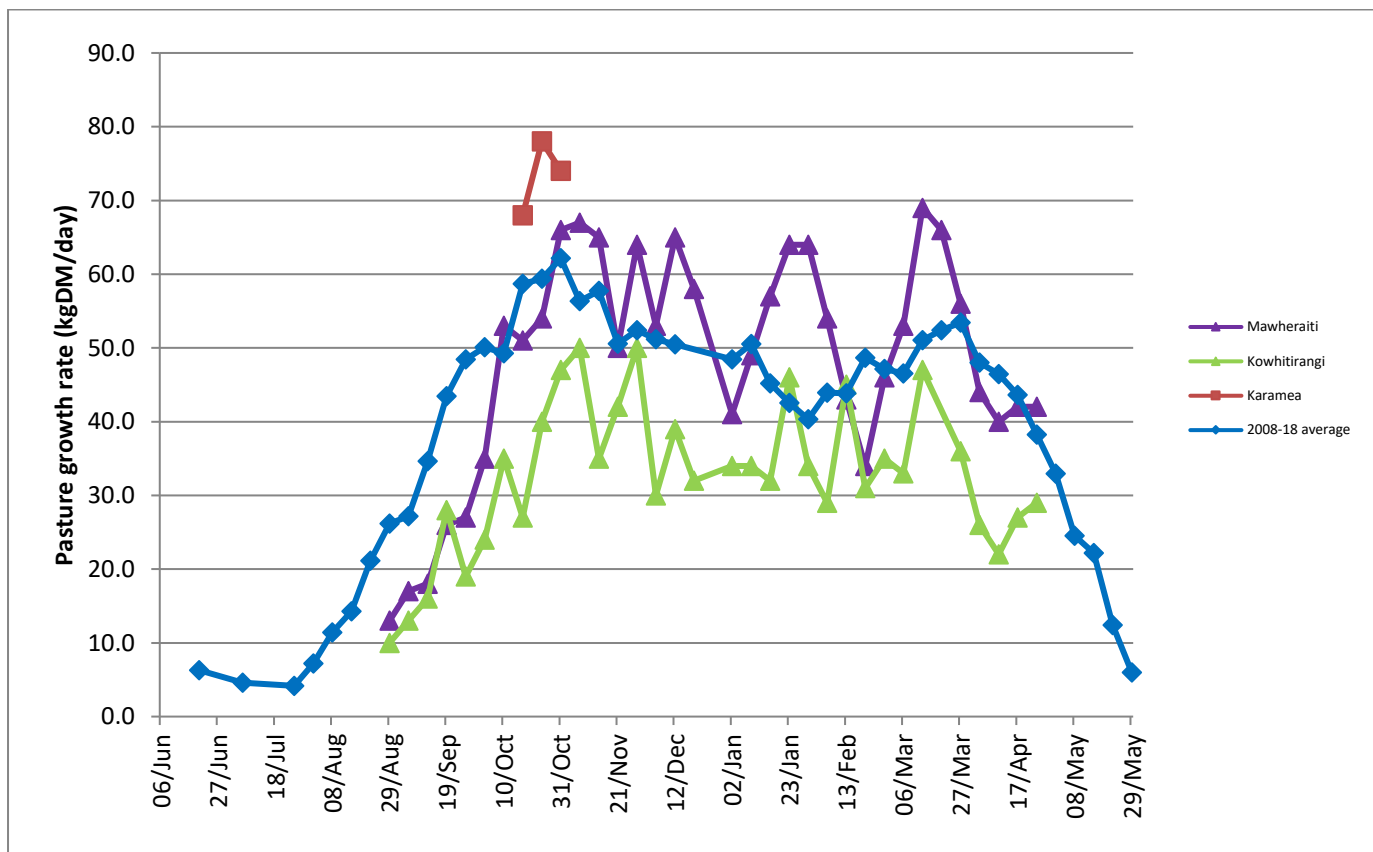
Your focus now should be setting up the farm for next season and achieving target pasture covers and body condition score at dry off and calving. If drying cows off in small groups make sure they are adequately marked and there is no opportunity for them to re-enter the milking herd, especially if dry cow therapy is being used.

Remember to confirm your dry cow therapy options with your veterinarian and give priority to drying off earlier calving cows as they will have less time over the dry period to put on the required body condition. It is one thing to have enough supplements in your feed budget and suitable average pasture cover, but do you have enough time for cows to physically gain the body condition needed for calving?

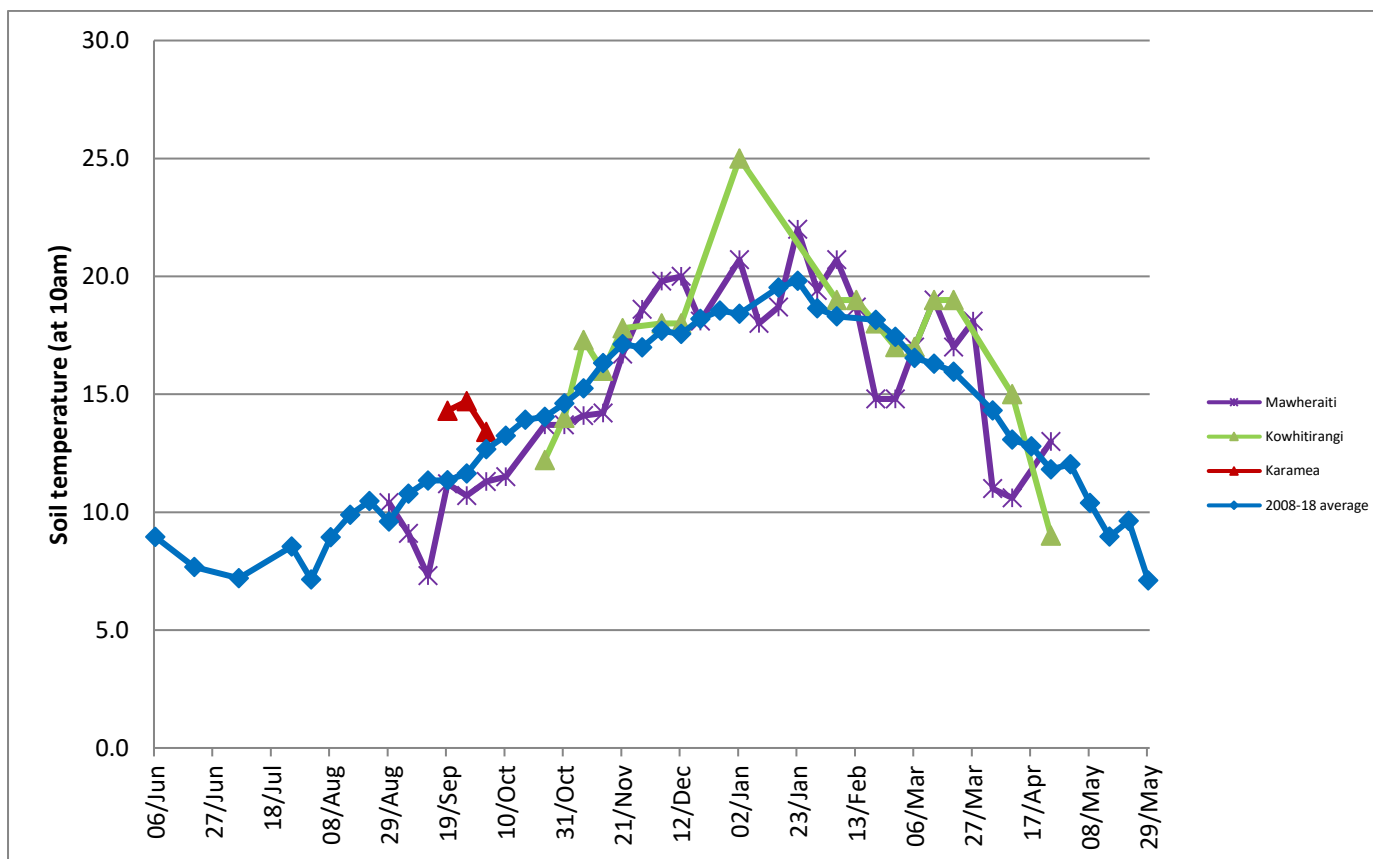
## Farm Summary

	Mawheraiti	Kowhitirangi
Average cover (kg DM/ha)	2308	2057
APC (13 February)	2297	2054
Rotation length (days)	34	32
Stocking rate	2.4	2.1
Percentage in milk	100	100
Milksolids kg/cow	1.54	1.06
Milksolids kg/ha	3.4	2.1
MS/cow (season to date)	403	393
MS/ha (season to date)	1011	801
N (kg/ha) year to date	121	178
Current N application rate kg N/ha	-	-
DM%	12.1	12.9
Pasture ME	12.3	12.4
Pasture NDF	50.5	52.6
Pasture CP	31.6	28.0
Target Intake (kg DM/cow/d)	20	18
Supplement (kg/cow/day)	5.8	3.8
Soil temperature (°C)	13	9
Growth Rate (kg DM/day)	42	29
Rainfall	56	125
Conditions for farmwalk	Rain, heavy at times	Beautiful day, fine and warm
Comments		

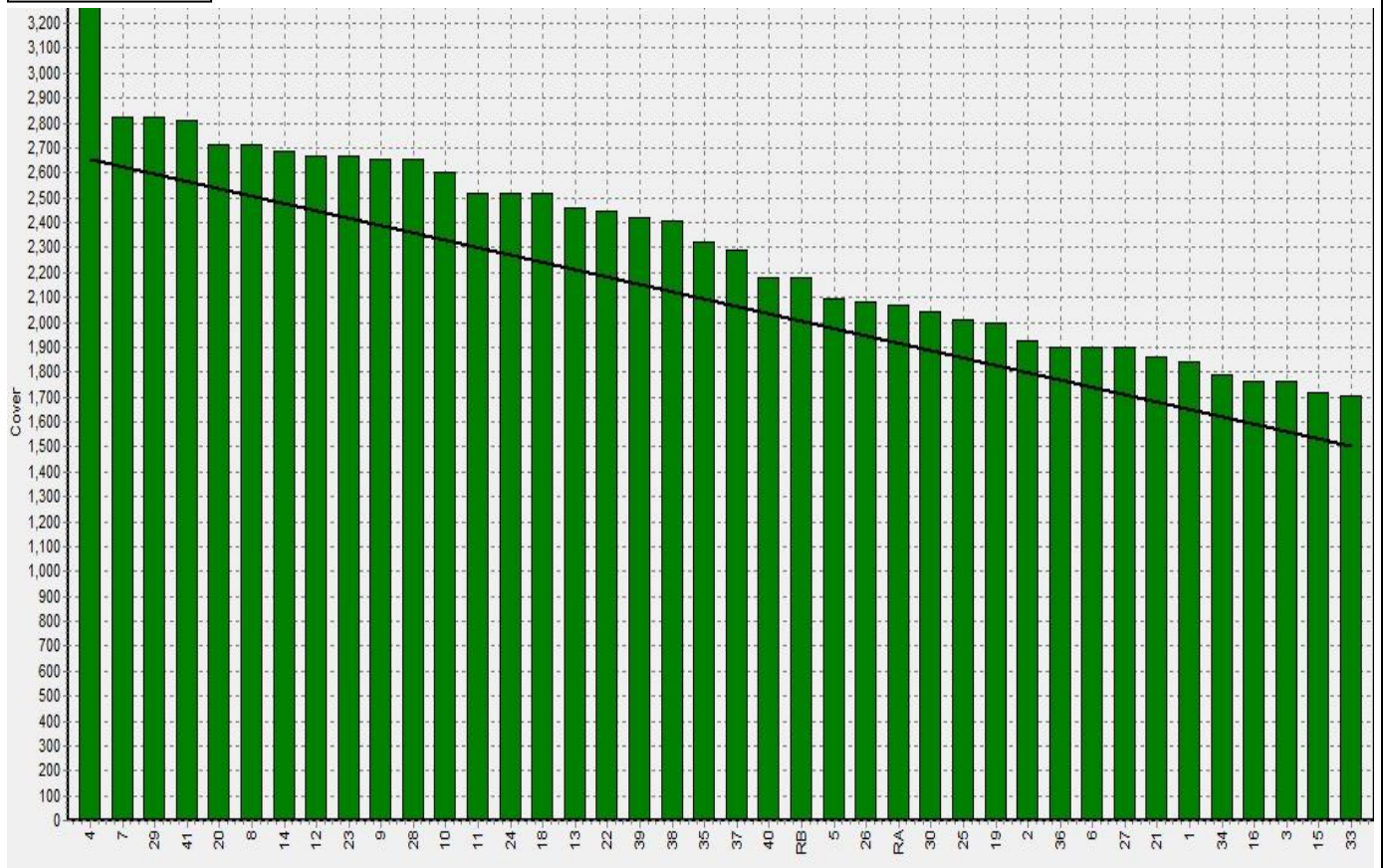
## Weekly Pasture Growth Rates



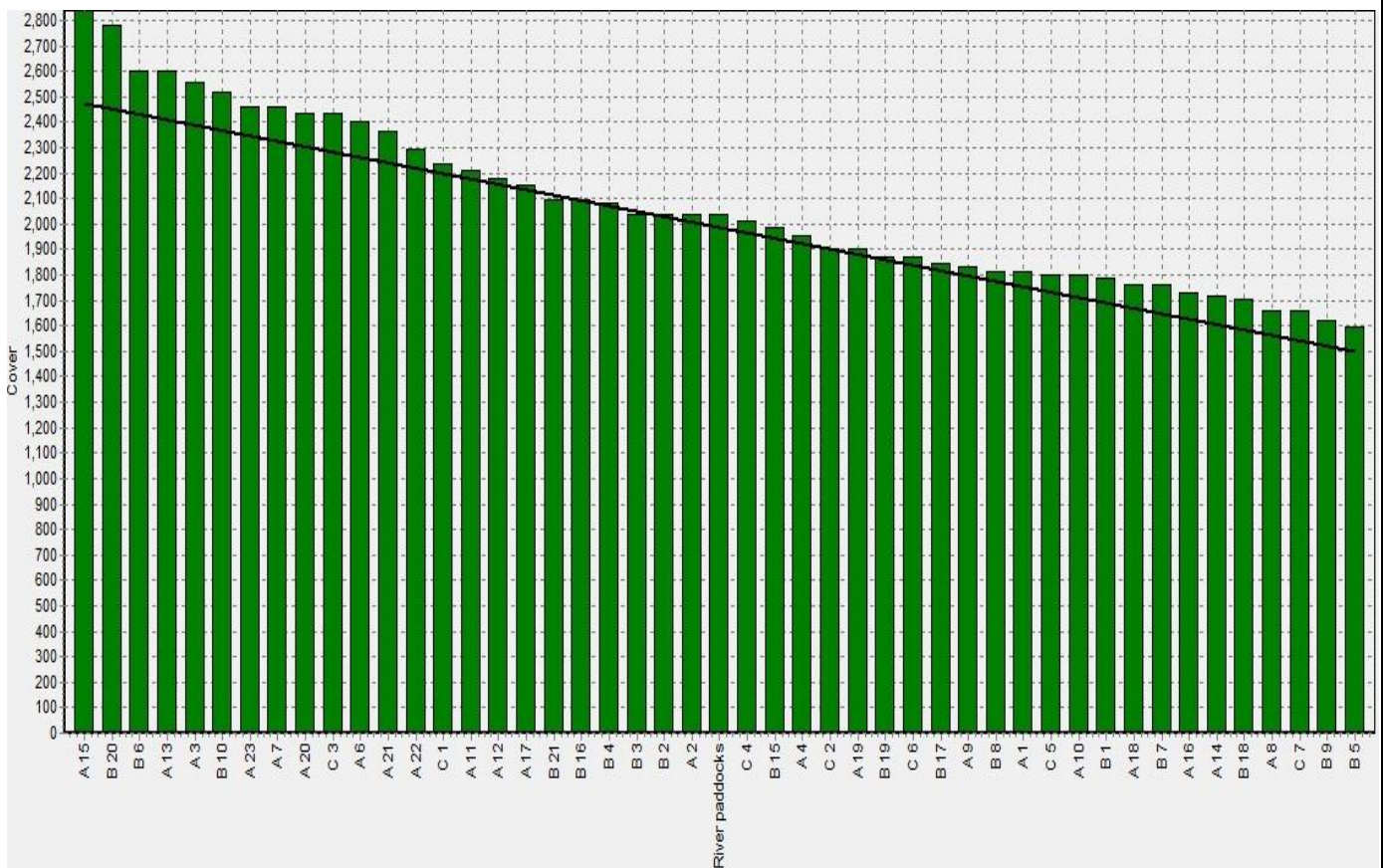
## Weekly Soil Temperature



### Mawheraiti



### Kowhitirangi



Mawheraiti

Description	Date	RPM	% DM	% Prot	% Lipid	% ADF	% NDF	Sol Sugar	OMD %	MJME/kg
Paddock 13	7/9/2018	10.3	17.7	30.1	4.6	18.7	41.4	13.0	92.2	>12.7
Paddock 12	1/10/2018	14.0	13.5	27.7	3.7	21.8	47.1	13.9	>85	>12.7
Paddock 25	5/11/2018	14.6	13.7	22.7	4.3	23.0	43.8	15.1	89.3	>12.7
Paddock 4	4/12/2018	17.4	16.8	18.8	3.6	8.5	23.5	18.2	>85	12.7
Paddock 5	28/1/2019	8.7	15.3	25.1	3.6	22.6	51.1	7.0	84	12.3
Paddock 2	11/2/2019	16.8	11.8	29.2	3.3	24.4	53.5	5.0	>85	>12.7
Paddock 15	11/3/2019	12.4	13.5	28.8	3.6	22.0	52.6	7.7	>85	>12.7
Paddock 22	1/4/2019	13.3	12.1	31.6	4.0	22.0	50.5	4.0	84.4	12.3

Kowhitarangi

Description	Date	RPM	% DM	% Prot	% Lipid	% ADF	% NDF	Sol Sugar	OMD %	MJME /kg
Paddock 5	7/9/2018		17.4	26.8	4.9	18.9	39.3	18.2	91.6	13.4
Paddock 14	2/10/2018	12.0	15.1	22.4	4.4	20.7	43.2	18	>85	>12.7
Paddock 10	7/11/2018	11.8	15.8	27.3	4.0	21.2	47.6	9.2	90.4	13.2
Paddock 3	5/12/2018	8.9	16.7	20.8	4.2	22.8	47.9	13	>85	12.7
Paddock 15	30/1/2019	10.4	12.3	28.3	4.1	22.8	51.2	2.0	84.0	12.3
Paddock 17	13/2/2019	16.6	13.1	26.1	3.9	25.2	50.9	6.6	80.7	11.8
Paddock B2	13/03/19	12.6	12.3	29.1	4.7	21.9	47.6	5.4	84.0	12.3
Paddock 6B	3/4/19	17.6	12.9	28.0	4.0	24.3	52.6	5.1	84.7	12.4