

# Westland Monitor Farm Project

Weekly Update as at week ending Wednesday 10 October 2018

## CO comment

Cows calving in the first six weeks of calving are more likely to become pregnant in the first six weeks of mating. Later calving cows have a reduced probability of being an early calving cow next season. Making sure that everything is in place for the planned start of mating is critical.

Cow health; If you are considering metric checks or blood tests, these should be completed early so action can be taken if needed. Staff training; A refresher for staff in heat detection and the farm heat detection policy will be a good use of time to make sure all new and existing staff are on the same page to achieve the desired outcomes. Feeding; Reduced mating performance occurs if cows are underfed at mating time. If feed is short on your farm this spring you need to carefully plan your mating programme and make farm management decisions to deal with the feed shortage. A fully fed, well-conditioned animal is best placed to achieve reproductive performance.

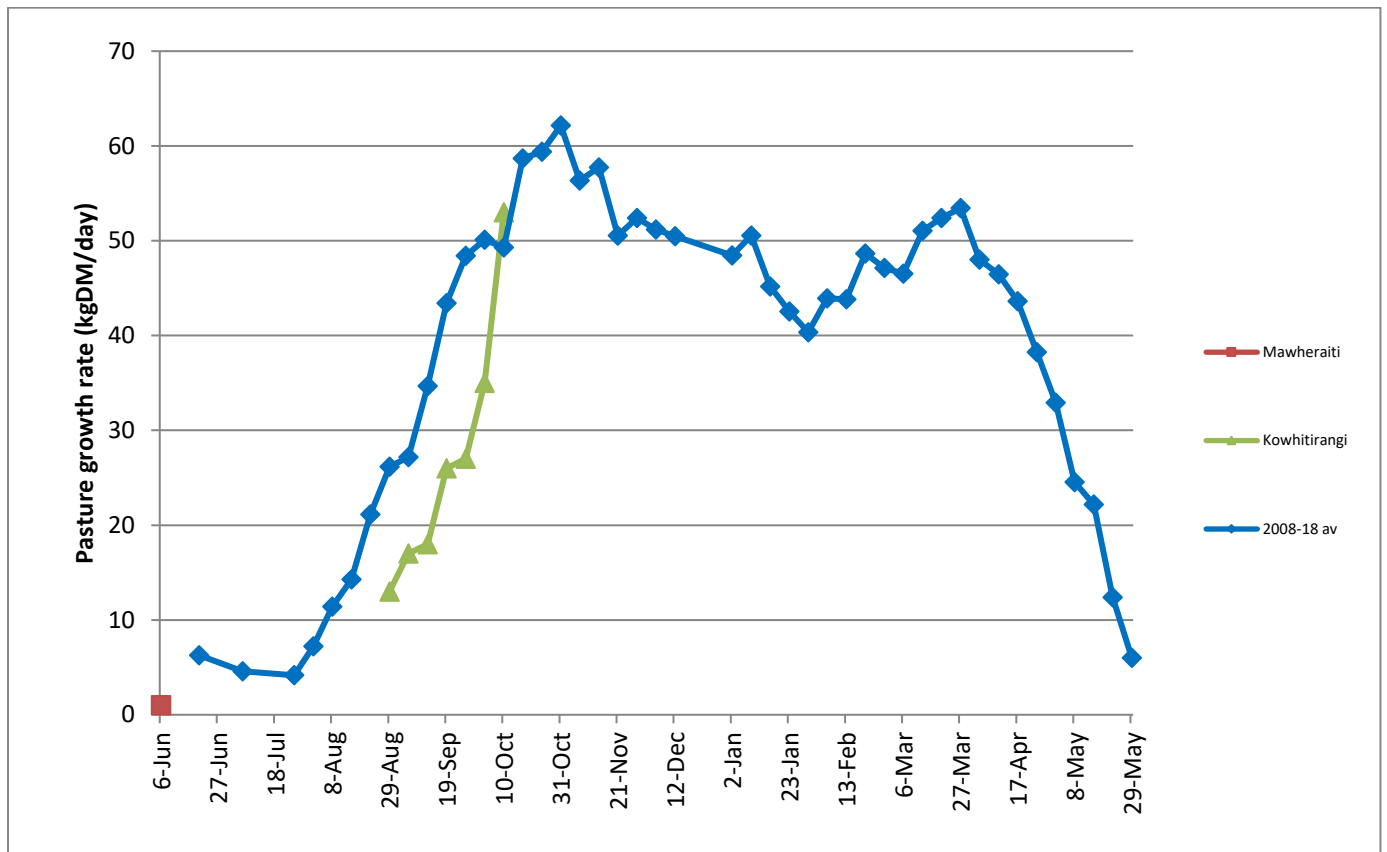
It is important to monitor mating in real time against targets. If targets are not being met some analysis and action may be required. Seeking advice may help remedy problems at mating. The earlier an issue is identified the easier it is to find a solution.

## Farm Summary

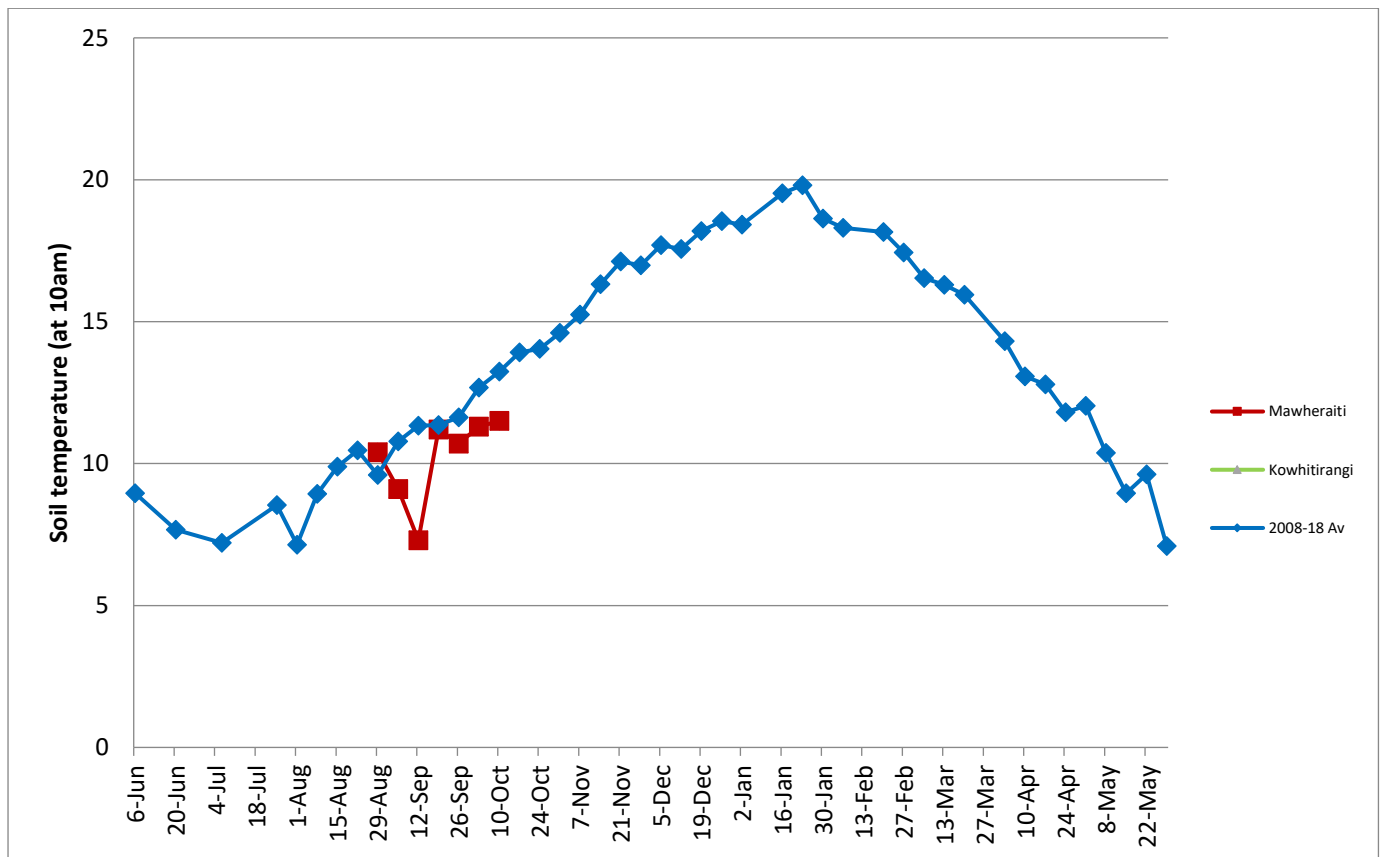
	Mawheraiti	Kowhitirangi
Average cover (kg DM/ha)	2199	2025
APC (3 Oct)	2120	1974
Rotation length (days)	25	29
Stocking rate	2.7	2.0
Percentage in milk		
Milksolids kg/cow	2.56	2.05
Milksolids kg/ha	6.0	4.1
MS/cow (season to date)	71.6	71.0
MS/ha (season to date)	40.1	28.6
N (kg/ha) year to date		
Current N application rate kg N/ha		7
	1 October 2018	2 October 2018
DM%	13.5	15.1
Pasture ME	>12.7	>12.7
Pasture NDF	47.1	43.2
Pasture CP	27.7	22.4
Target Intake (kg DM/cow/d)	20	18
Supplement (kg/cow/day)	0.57	2.4
Soil temperature (°C)	11.5	
Growth Rate (kg DM/day)	53	35
Rainfall	4	62
Conditions for farmwalk	Fine and warm	Rain and cold
Comments		

NB: pasture quality data are for 1 sample collected from each farm

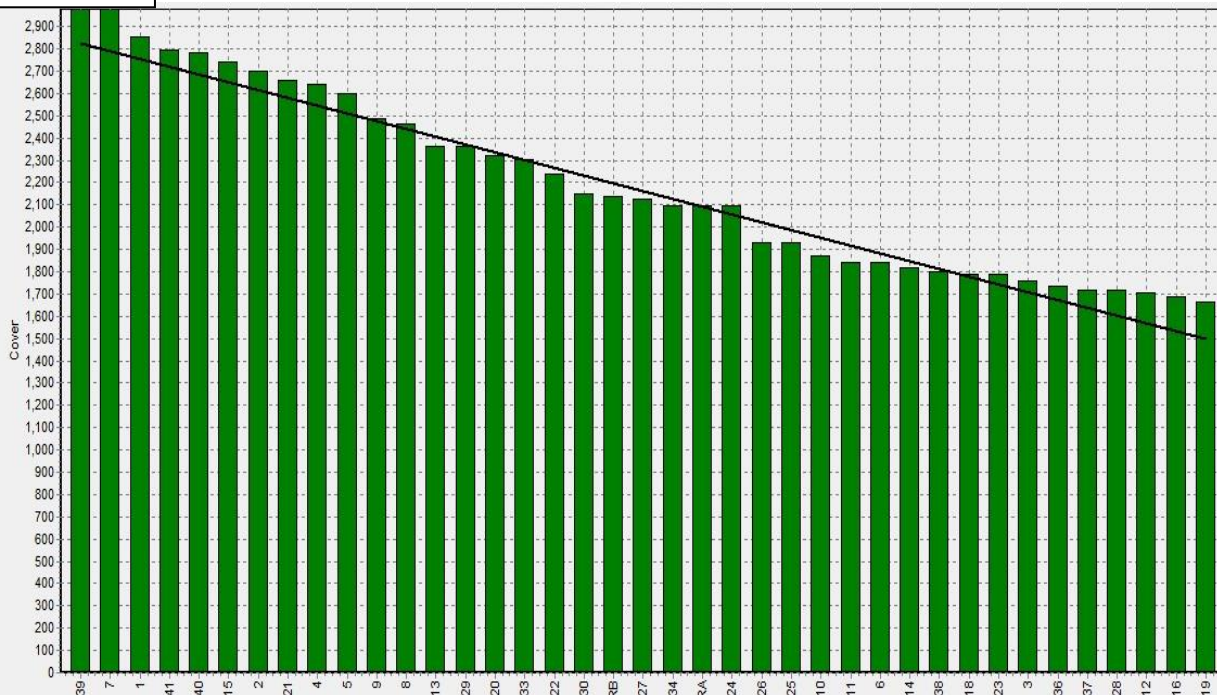
## Weekly Pasture Growth Rates



## Weekly Soil Temperature



### Mawheraiti



### Kowhitirangi

