

# Westland Monitor Farm Project

Weekly Update as at week ending Wednesday 12<sup>th</sup> December 2018

## CO comment

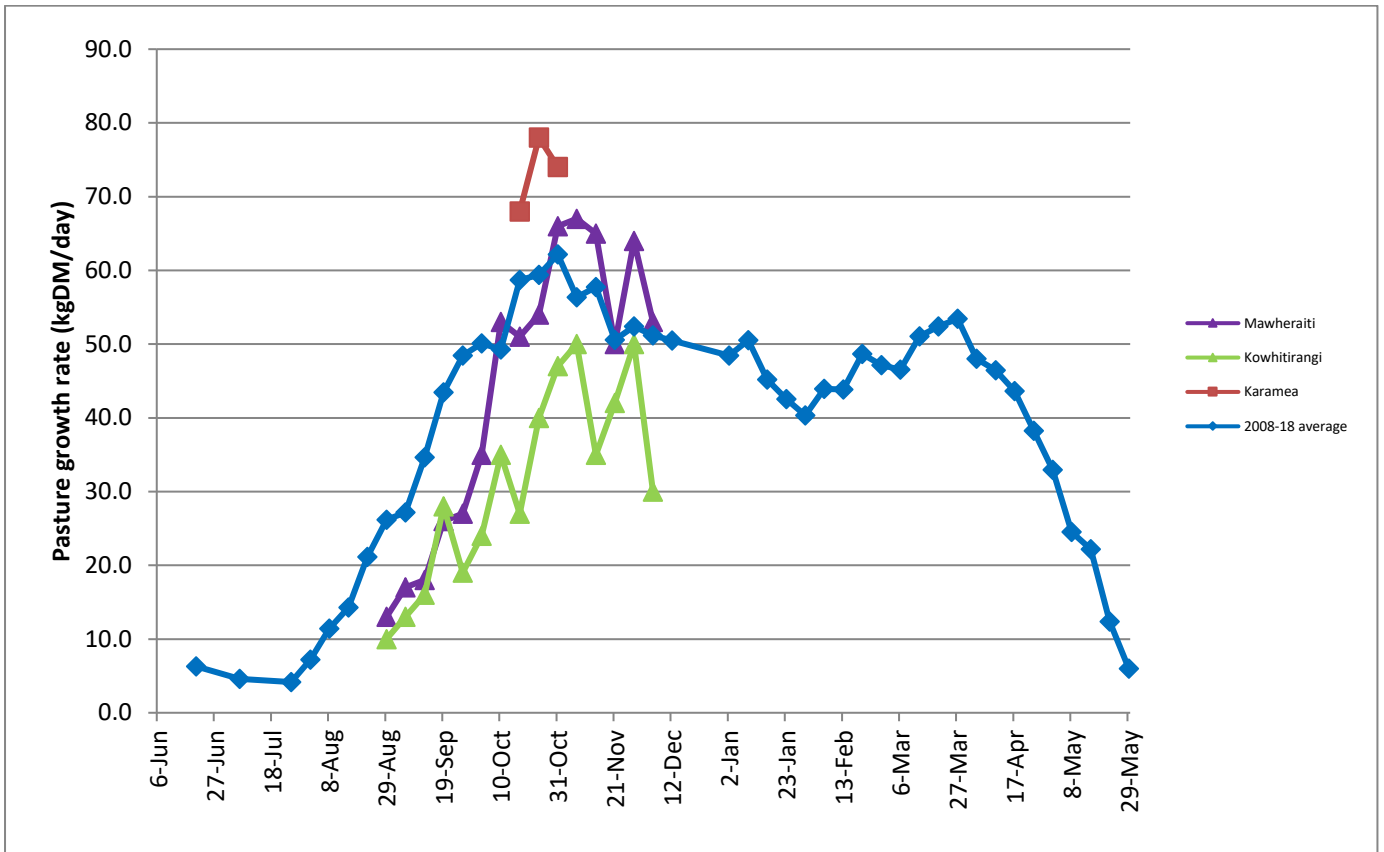
Many farms will have returned to having surplus pasture cover, which if not managed well can reduce future pasture quality. Options to keep pasture cover include:

- Conserving more pasture silage: This is not a cheap option but the cost can be offset by the benefits of future pasture quality resulting from mowing the paddock, and is still relatively cheap compared to other feeds if you don't have to buy the grass. Using it to lengthen the rotation for summer- carry some cover forward by making sure cows achieve residuals when grazing high pasture covers. The risk here is that high pasture growth continues and even more surplus develops. Lengthening the rotation should be a gradual process so don't get carried away.
- Deferred Grazing: Carry some surplus grass forward as a standing crop. Some benefits of this can result from letting some pasture go to seed and rebuilding the soil seed bank. DairyNZ researchers are interested in this as way for improving ryegrass persistence. When grass is growing well, culling may seem a long way off but the longer term view is that every cow that doesn't have to be fed from February to May (120 days) makes 1 to 1.5 tonnes dry matter available at low cost for the remaining cows during a period where pasture can be in short supply. Start thinking about which cows may fit the criteria for a cull list now so that in the new year these decisions are made with relative ease.

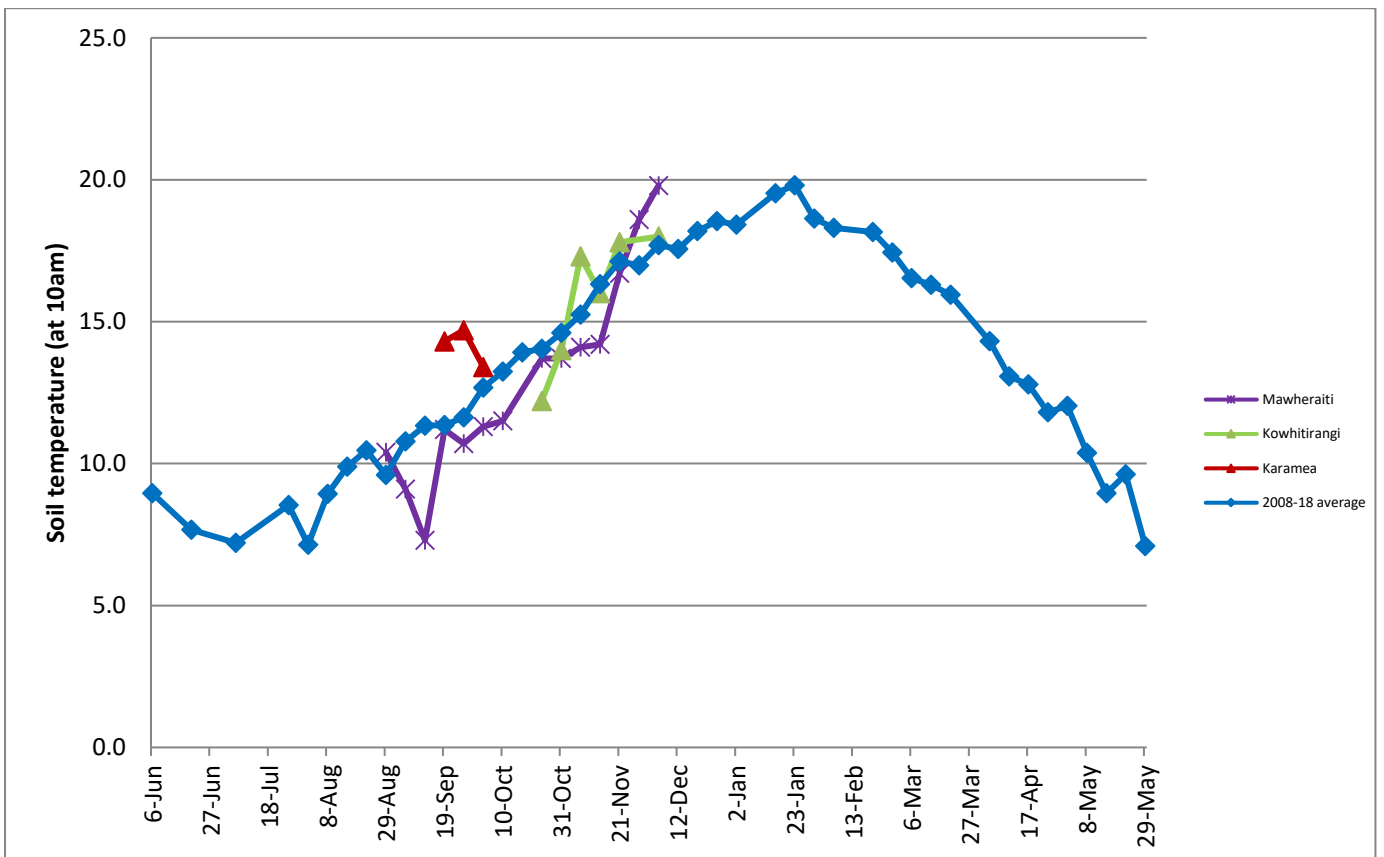
## Farm Summary

	Mawheraiti	Kowhitirangi
Average cover (kg DM/ha)	2258	2152
APC (5 December)	2252	2200
Rotation length (days)	24	25
Stocking rate	2.7	2.0
Percentage in milk	100	100
Milksolids kg/cow	1.84	1.86
Milksolids kg/ha	4.6	3.8
MS/cow (season to date)	182	188
MS/ha (season to date)	457	382
N (kg/ha) year to date	61	131
Current N application rate kg N/ha	28	
DM%	16.8	16.7
Pasture ME	12.7	12.7
Pasture NDF	42.2	47.9
Pasture CP	18.8	20.8
Target Intake (kg DM/cow/d)	20	20
Supplement (kg/cow/day)	1.1	1.8
Soil temperature (°C)	19.8	18
Growth Rate (kg DM/day)	53	30
Rainfall	70	88
Conditions for farmwalk	Very hot	Very hot
Comments		

## Weekly Pasture Growth Rates



## Weekly Soil Temperature



## Mawheraiti



## Kowhitirangi

