

Westland Monitor Farm Project

Weekly Update as at week ending Wednesday 12 September 2018

CO comment

Mating is around the corner, so it's time to develop and implement an efficient heat detection policy for your farm. Farmers who achieve good heat detection results use a combination of observation and effective use of heat detection aids. Use the time between calving and mating to take junior staff to the paddocks after milking and work in the shed to teach them what to look for in a cow on heat.

Tail painting 35 days before mating and identifying those cows that haven't cycled before mating starts are both strategies to minimise problems.

For more details go to <https://www.dairynz.co.nz/animal/reproduction-and-mating> and access the tools and resources available on the website.

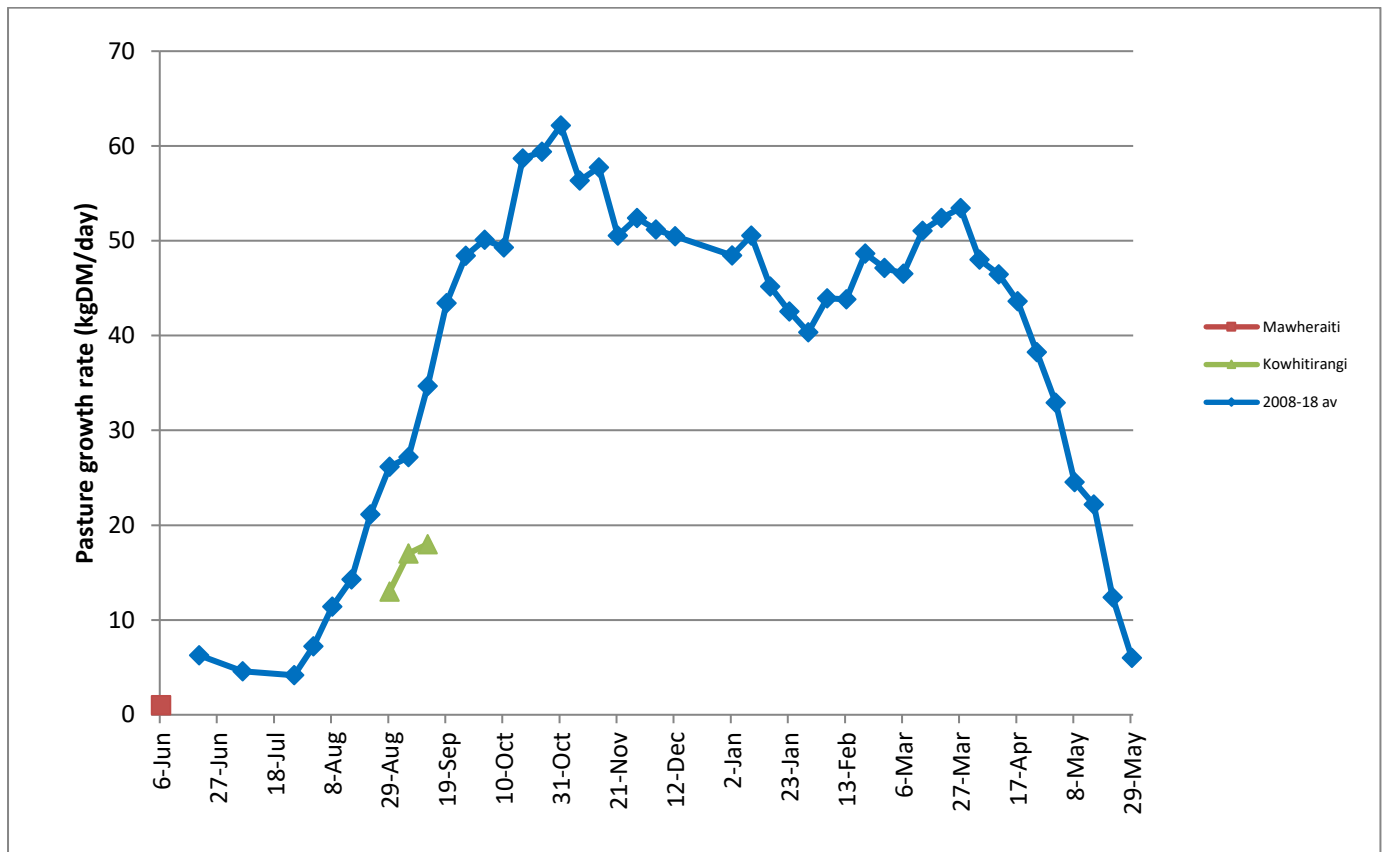
There is a round of reproduction discussion groups coming up. To find the one nearest to you visit <https://www.dairynz.co.nz/events/>

Farm Summary

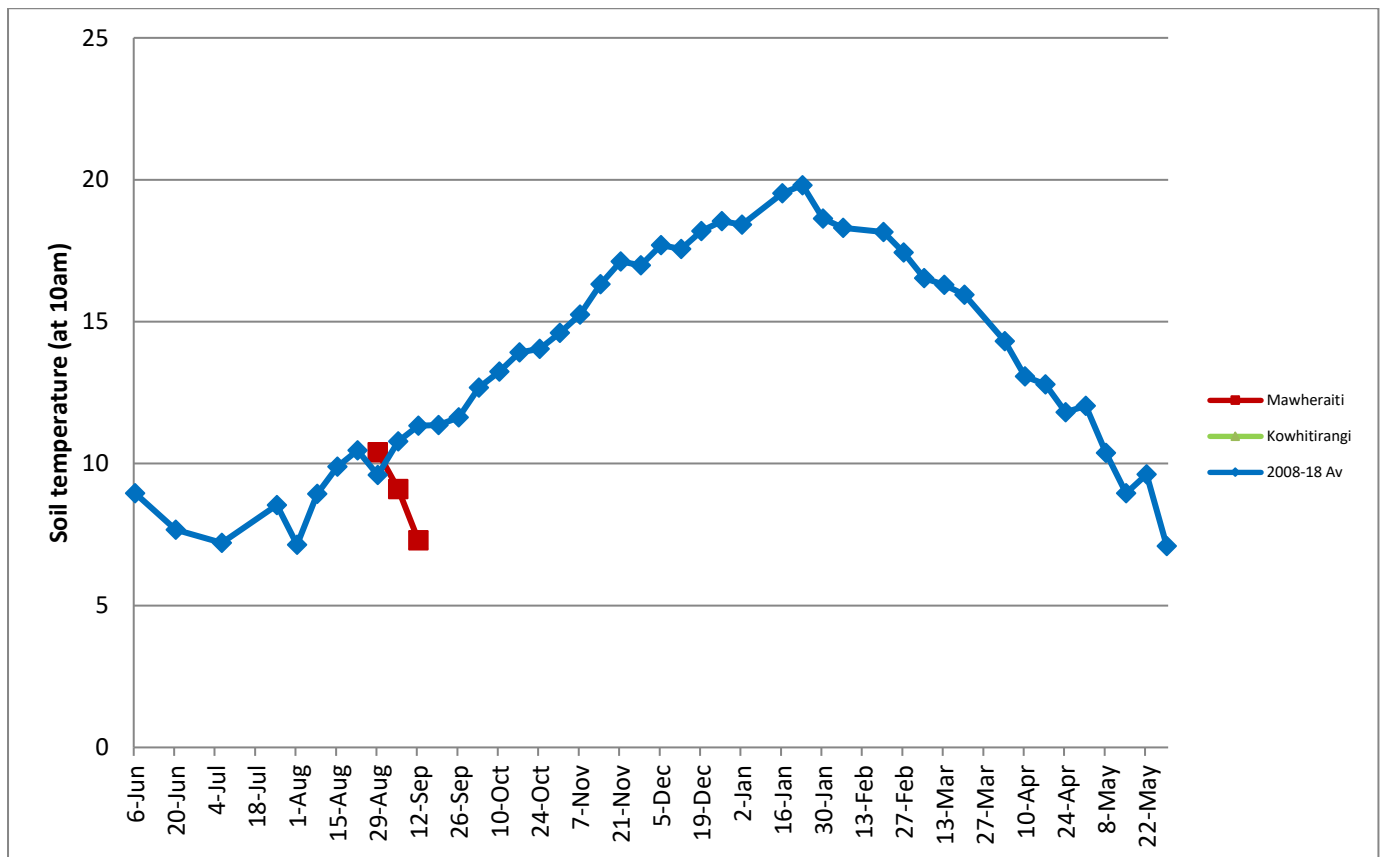
	Mawheraiti	Kowhitirangi
Average cover (kg DM/ha)	2077	1942
APC (4 September)	2103	1921
Rotation length (days)	53	50
Stocking rate	1.9	1.6
Percentage in milk	94	92
Milksolids kg/cow	1.91	1.89
Milksolids kg/ha	3.7	3.0
MS/cow (season to date)	1.4	2.0
MS/ha (season to date)	25.8	21.1
N (kg/ha) year to date		
Current N application rate kg N/ha		
DM%		
Pasture ME		
Pasture NDF		
Pasture CP		
Target Intake (kg DM/cow/d)	20	17
Supplement (kg/cow/day)	2.8	2.6
Soil temperature (°C)	7.3	
Growth Rate (kg DM/day)	18	16
Rainfall		
Conditions for farmwalk	Fine, beautiful day	Fine, beautiful day
Comments		

NB: pasture quality data are for 1 sample collected from each farm

Weekly Pasture Growth Rates



Weekly Soil Temperature



Mawheraiti

Farm Name: STU AND DEB BLAND
 Date Read :- 10/09/2018
 Average Cover :- 2077 Kg DM/Ha
 Average Growth :- 18 Kg DM/Ha/Day



Kowhitirangi

Farm Name: ANNA AND JEREMY HART
 Date Read :- 12/09/2018
 Average Cover :- 1942 Kg DM/Ha
 Average Growth :- 16 Kg DM/Ha/Day

