

Westland Monitor Farm Project

Weekly Update as at week ending Wednesday 13th February 2019

CO Comment

There are some important and informative events this season.

On the 21st of February from 11am until 1pm, there will be a consultation on the proposed M. Bovis levy. This event will be at Shantytown where you can discuss your views and get your questions answered by those involved in the response. Your feedback will be critical to have your say represented.

You should have received your biosecurity response levy documents in the post. The deadline to submit feedback is February 28th. You can complete the feedback form at

<https://www.dairynz.co.nz/business/biosecurity/biosecurity-response-levy>

In May we have the return of the Farmers Forum which last year was a hit with informative speakers from across the industry. This year the event will be held in Westport on the 7th of May. We are working on providing thought-provoking speakers, insight into the latest dairy science for a positive future and regionally-tailored practical workshops.

You may also get to have a beer with some mates.

Registrations open 15 March 2019. Keep up to date with the latest on Farmers Forum at

<https://www.dairynz.co.nz/about-us/event-presentations/farmers-forum-2019/>

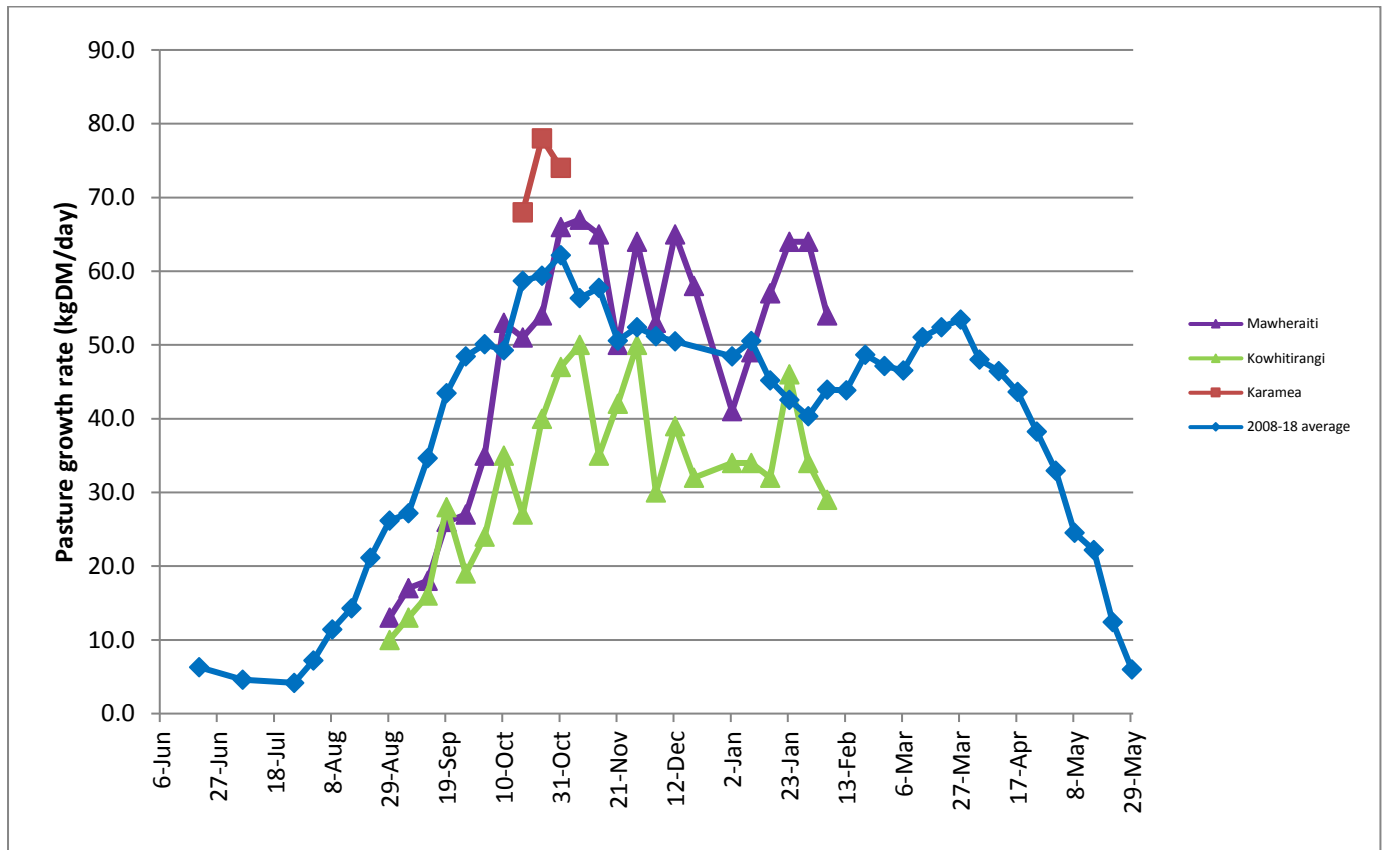
For all other regional events and discussion groups in your area visit

<https://www.dairynz.co.nz/events/?region=5454>

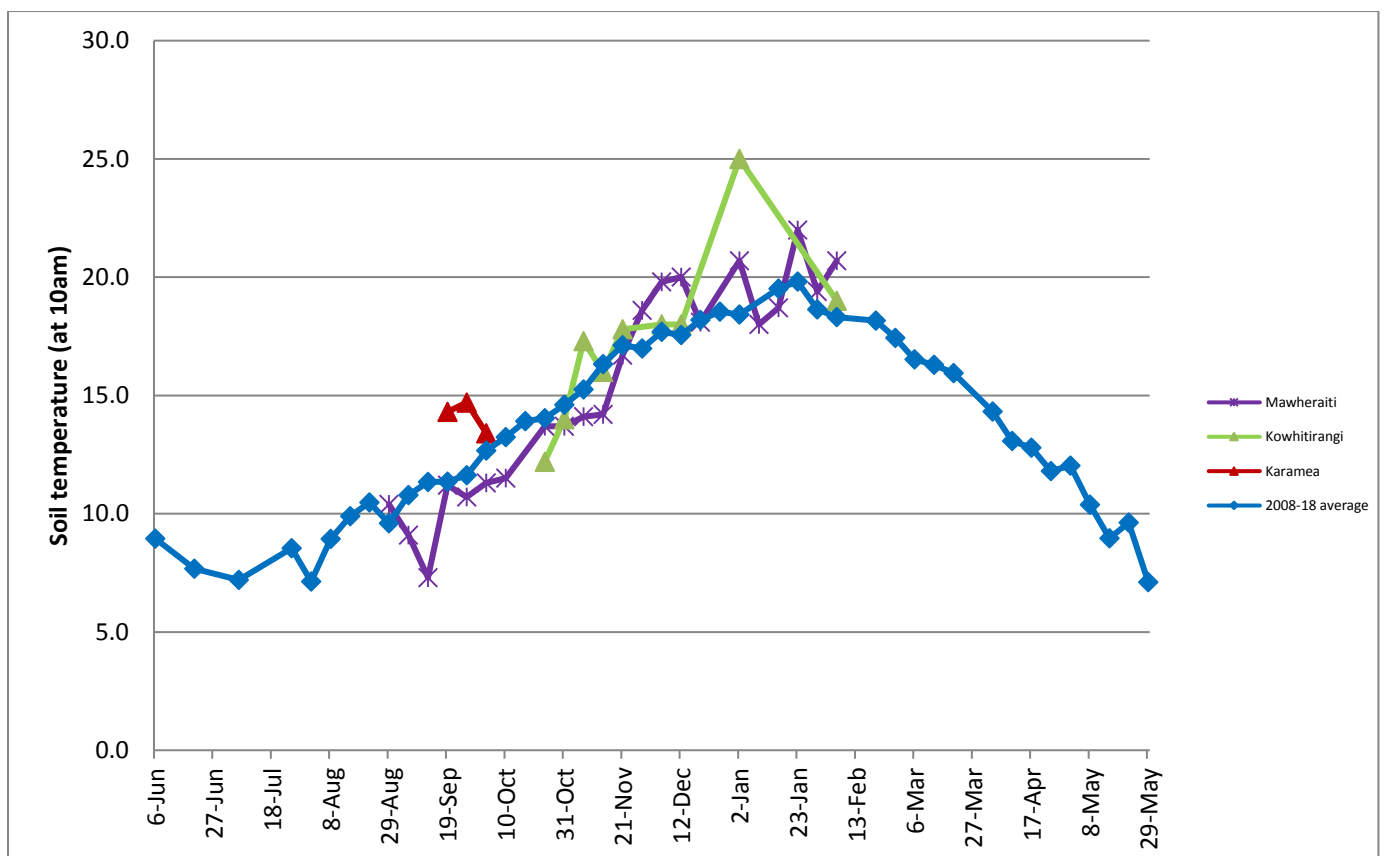
Farm Summary

	Mawheraiti	Kowhitirangi
Average cover (kg DM/ha)	2316	2104
APC (6 February)	2379	2109
Rotation length (days)	25	24
Stocking rate	2.7	2.2
Percentage in milk	100	100
Milksolids kg/cow	1.69	1.36
Milksolids kg/ha	4.2	2.7
MS/cow (season to date)	292	286
MS/ha (season to date)	733	583
N (kg/ha) year to date	100	178
Current N application rate kg N/ha	28	20
DM%	15.3	12.3
Pasture ME	12.3	12.3
Pasture NDF	51.1	51.2
Pasture CP	25.1	28.3
Target Intake (kg DM/cow/d)	20	18
Supplement (kg/cow/day)	1	1.5
Soil temperature (°C)	20.7	19.0
Growth Rate (kg DM/day)	54	29
Rainfall	8	0
Conditions for farmwalk	Hot and dry	Hot and dry
Comments		

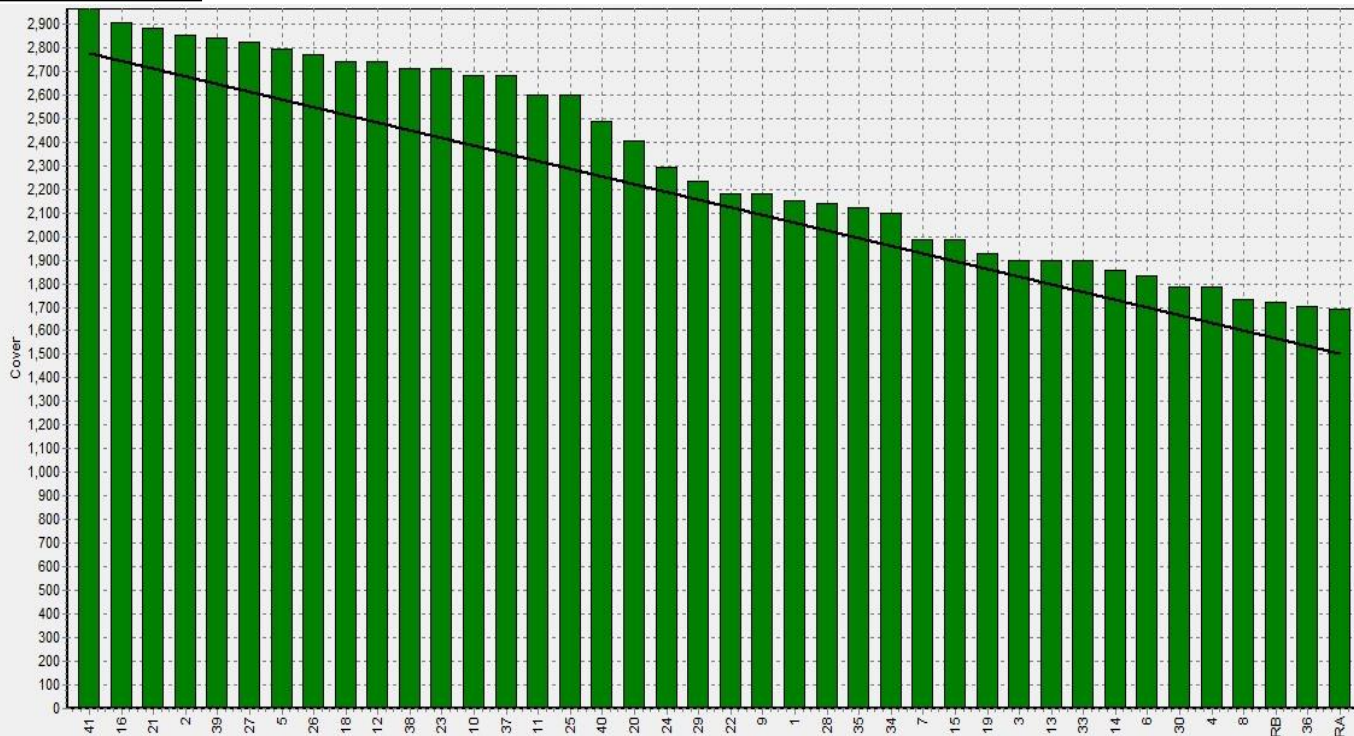
Weekly Pasture Growth Rates



Weekly Soil Temperature



Mawheraiti



Kowhitirangi

