

# Westland Monitor Farm Project

Weekly Update as at week ending Wednesday 13<sup>th</sup> March 2019

## CO Comment

The West Coast monitor farm field day is coming up this week.

Thursday 21 March – Municipal Band Hall, Cnr Steer and Reid Street, Blaketown, Greymouth 7805

Come along for a great opportunity to hear from monitor farmers on the West Coast and invited speakers.

- Hear a wrap up from the outgoing monitor farmers' last year in the West Coast Focus Farm Trust project
- DairyNZ Farm business Specialist, Robb Macbeth will be on hand to present the financial data for the 17/18 season
- David Chapman, Principal Scientist from DairyNZ will give a presentation on pasture production and management. David will be available to answer questions on pasture persistence, pasture plant physiological ecology and grazing management.

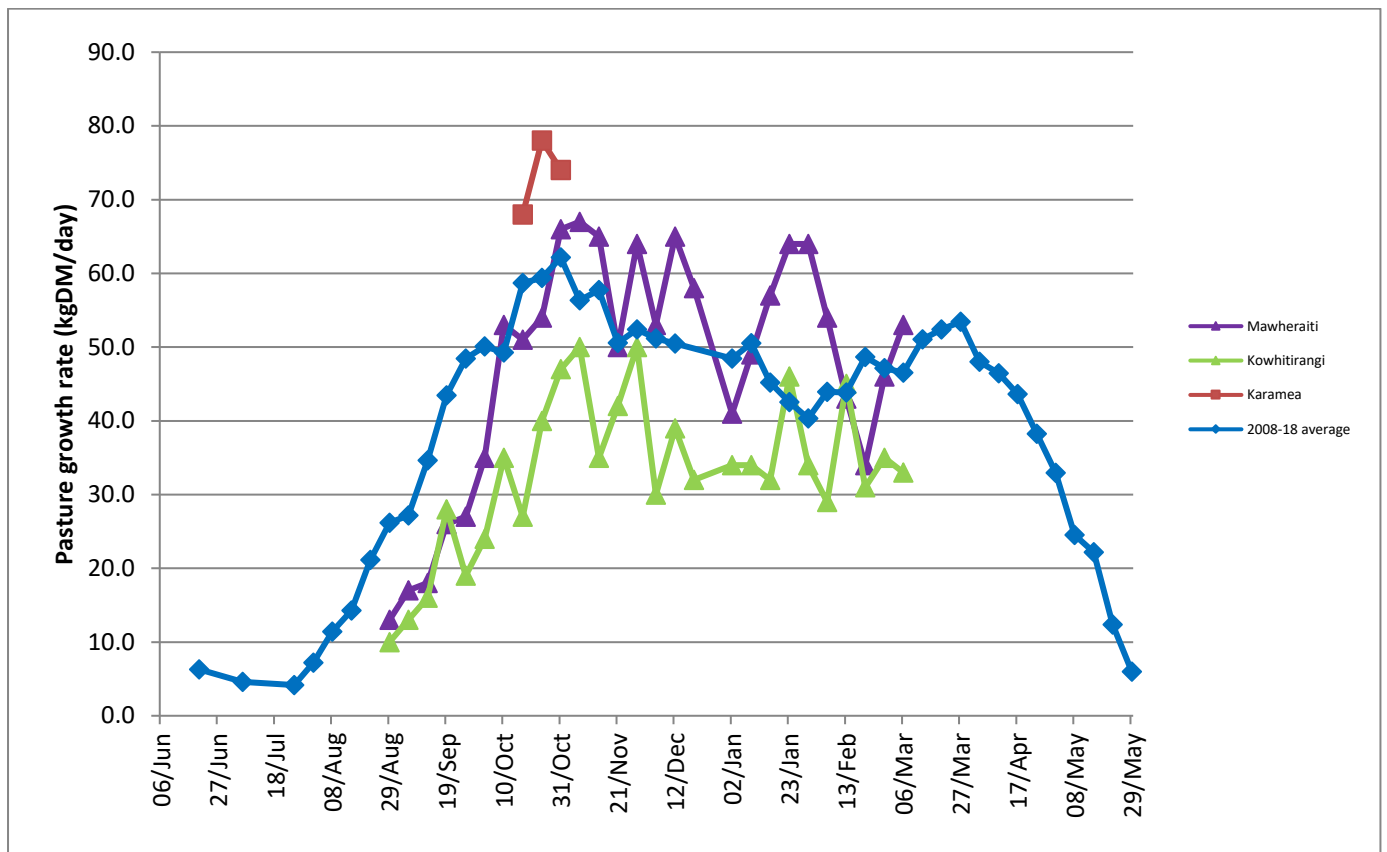
Lunch will be provided.

Further details available on the DairyNZ website <https://www.dairynz.co.nz/events/top-of-si-west-coast/west-coast-focus-farm-trust-monitor-farm-field-day-greymouth-march/>

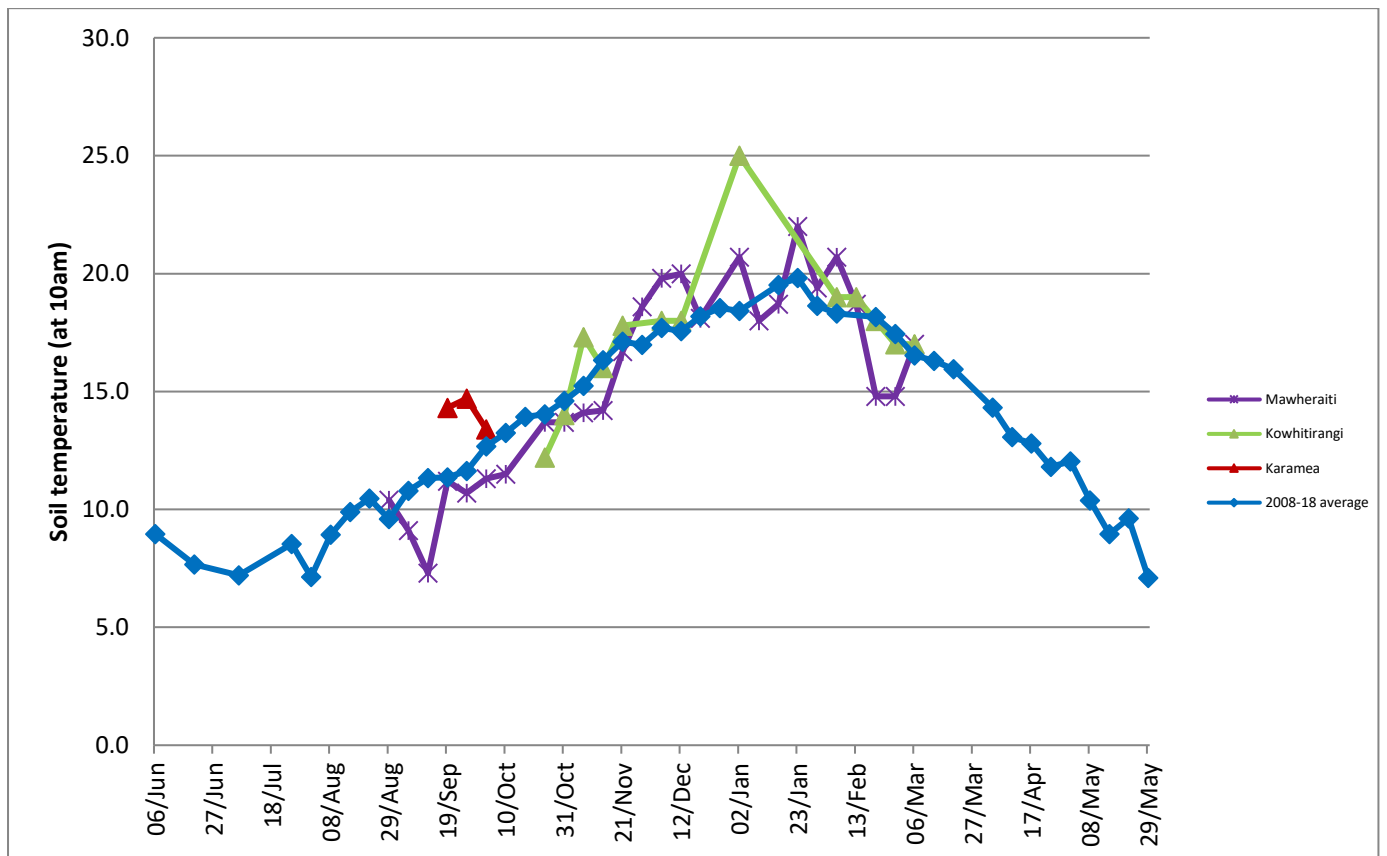
## Farm Summary

	Mawheraiti	Kowhitirangi
Average cover (kg DM/ha)	2199	2179
APC (13 February)	2193	2177
Rotation length (days)	25	27
Stocking rate	2.5	2.2
Percentage in milk	100	100
Milksolids kg/cow	1.68	1.72
Milksolids kg/ha	3.9	3.4
MS/cow (season to date)	337	330
MS/ha (season to date)	846	673
N (kg/ha) year to date	117	178
Current N application rate kg N/ha	28	-
DM%	11.8	13.1
Pasture ME	12.9	11.8
Pasture NDF	53.5	50.9
Pasture CP	29.2	26.1
Target Intake (kg DM/cow/d)	20	18
Supplement (kg/cow/day)	2.6	1
Soil temperature (°C)	17	17
Growth Rate (kg DM/day)	53	33
Rainfall	23	60
Conditions for farmwalk	Fine and warm	Warm showers
Comments		

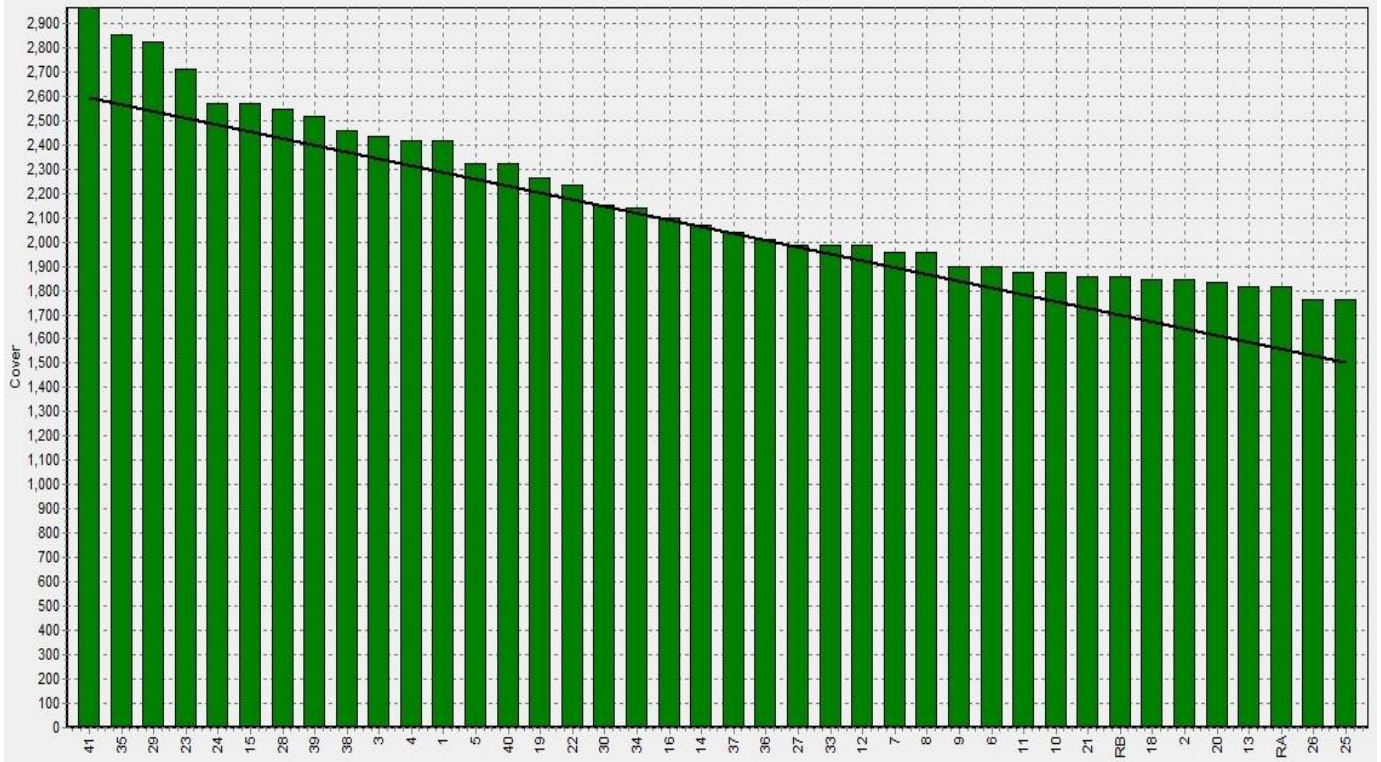
## Weekly Pasture Growth Rates



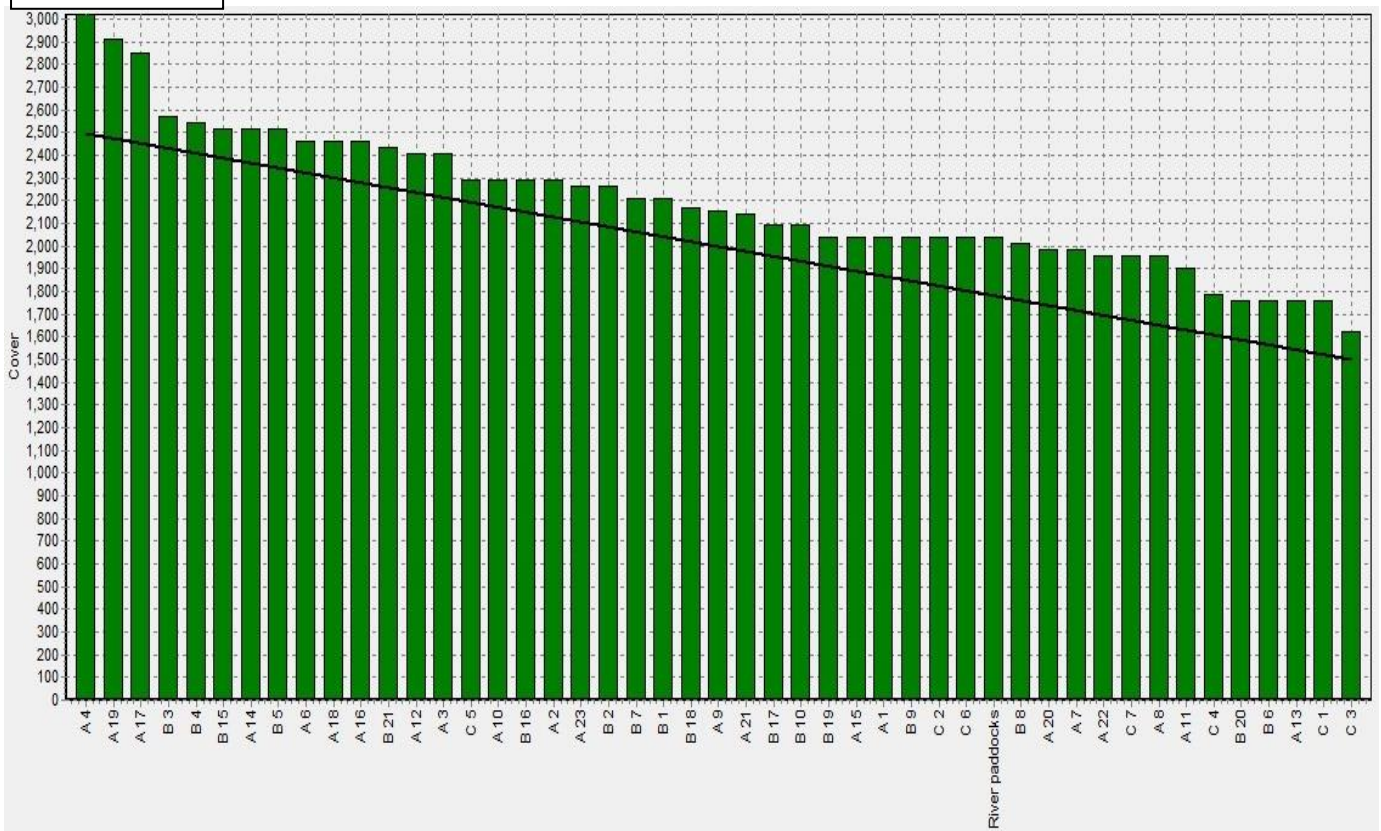
## Weekly Soil Temperature



## Mawheraiti



## Kowhitirangi



Mawheraiti

Description	Date	RPM	% DM	% Prot	% Lipid	% ADF	% NDF	Sol Sugar	OMD %	MJME/kg
Paddock 13	7/9/2018	10.3	17.7	30.1	4.6	18.7	41.4	13.0	92.2	>12.7
Paddock 12	1/10/2018	14.0	13.5	27.7	3.7	21.8	47.1	13.9	>85	>12.7
Paddock 25	5/11/2018	14.6	13.7	22.7	4.3	23.0	43.8	15.1	89.3	>12.7
Paddock 4	4/12/2018	17.4	16.8	18.8	3.6	8.5	23.5	18.2	>85	12.7
Paddock 5	28/1/2019	8.7	15.3	25.1	3.6	22.6	51.1	7.0	84	12.3
Paddock 2	11/2/2019	16.8	11.8	29.2	3.3	24.4	53.5	5.0	>85	>12.7

Kowhitirangi

Description	Date	RPM	% DM	% Prot	% Lipid	% ADF	% NDF	Sol Sugar	OMD %	MJME /kg
Paddock 5	7/9/2018		17.4	26.8	4.9	18.9	39.3	18.2	91.6	13.4
Paddock 14	2/10/2018	12.0	15.1	22.4	4.4	20.7	43.2	18	>85	>12.7
Paddock 10	7/11/2018	11.8	15.8	27.3	4.0	21.2	47.6	9.2	90.4	13.2
Paddock 3	5/12/2018	8.9	16.7	20.8	4.2	22.8	47.9	13	>85	12.7
Paddock 15	30/1/2019	10.4	12.3	28.3	4.1	22.8	51.2	2.0	84.0	12.3
Paddock 17	13/2/2019	16.6	13.1	26.1	3.9	25.2	50.9	6.6	80.7	11.8