

Westland Monitor Farm Project

Weekly Update as at week ending Wednesday 15th May 2019

CO Comment

The past week has seen a bit of a change in weather, with rain across the Coast and temperatures dropping off.

Now is the time to think about pasture management through winter and into spring.

Some things to remember include...

- The spring rotation planner can help to manage the transition from winter to spring and ensure appropriate covers are reached in spring.

<https://www.dairynz.co.nz/feed/pasture-management/feed-wedges-and-rotation-planners/spring-rotation-planner/spring-rotation-planner-tool/>

- Winter is the time of year where grazing below 7 clicks/1500 kg DM/ha does not appear to damage ryegrass growth.
- Pugging (reduces tiller density and allows weed ingress, reduces subsequent pasture production). Consider standing cows off on races/feed pads.
- Grazing at high stock density on wet soils (reduces subsequent pasture production by up to 45% the following year).
- High farm covers in August (leads to shading and loss of tiller density).

While we hope not to see too much rain over winter, but if we inevitably do, some tips for wet weather management include...

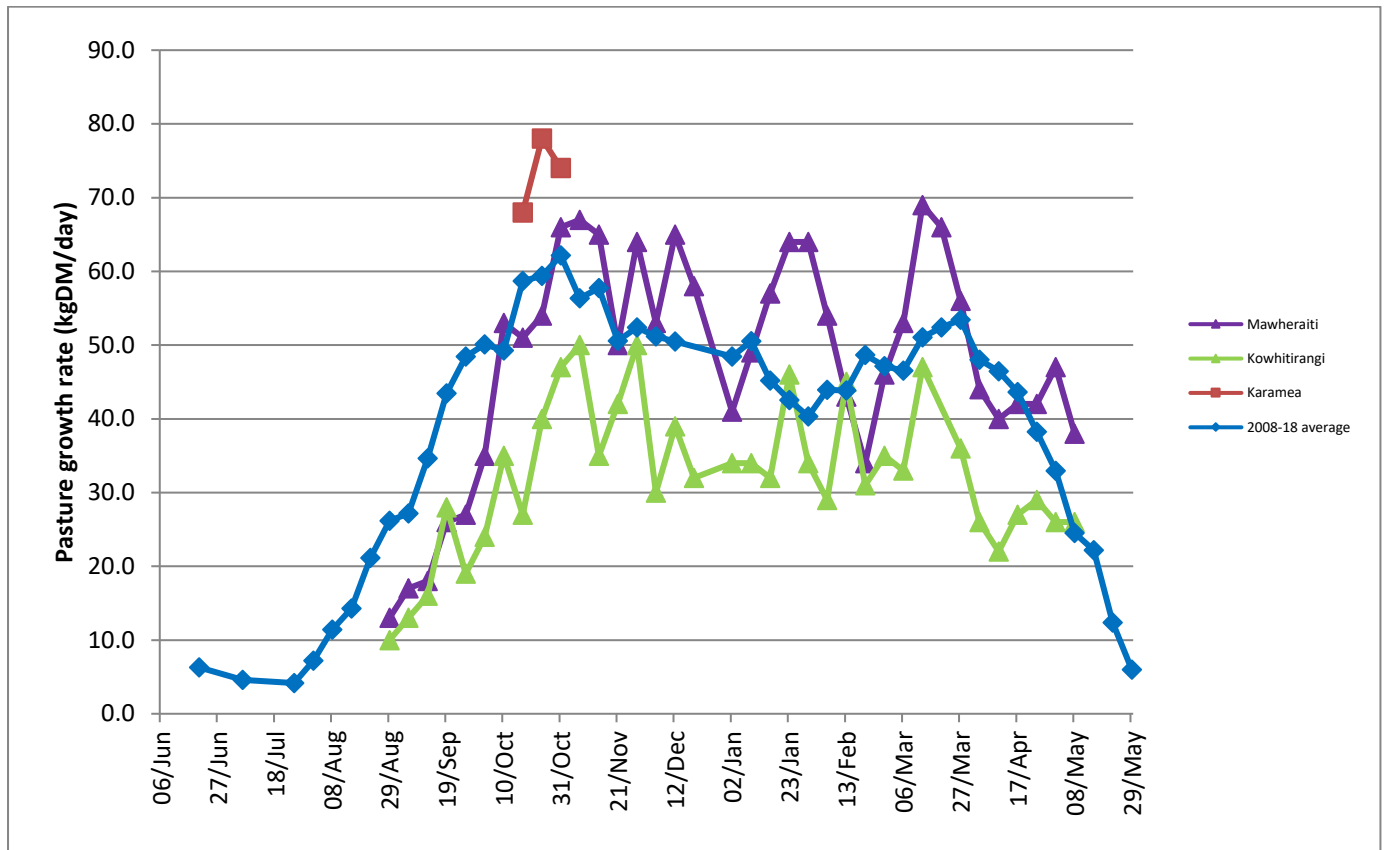
- Build pasture cover before the wet period
- Graze paddocks vulnerable to wet conditions early (e.g. autumn)
- Take cows in and out of different gateways
- Start grazing from the back of the paddock
- Use on-off grazing with a well-designed and managed stand-off area.

Farm Summary

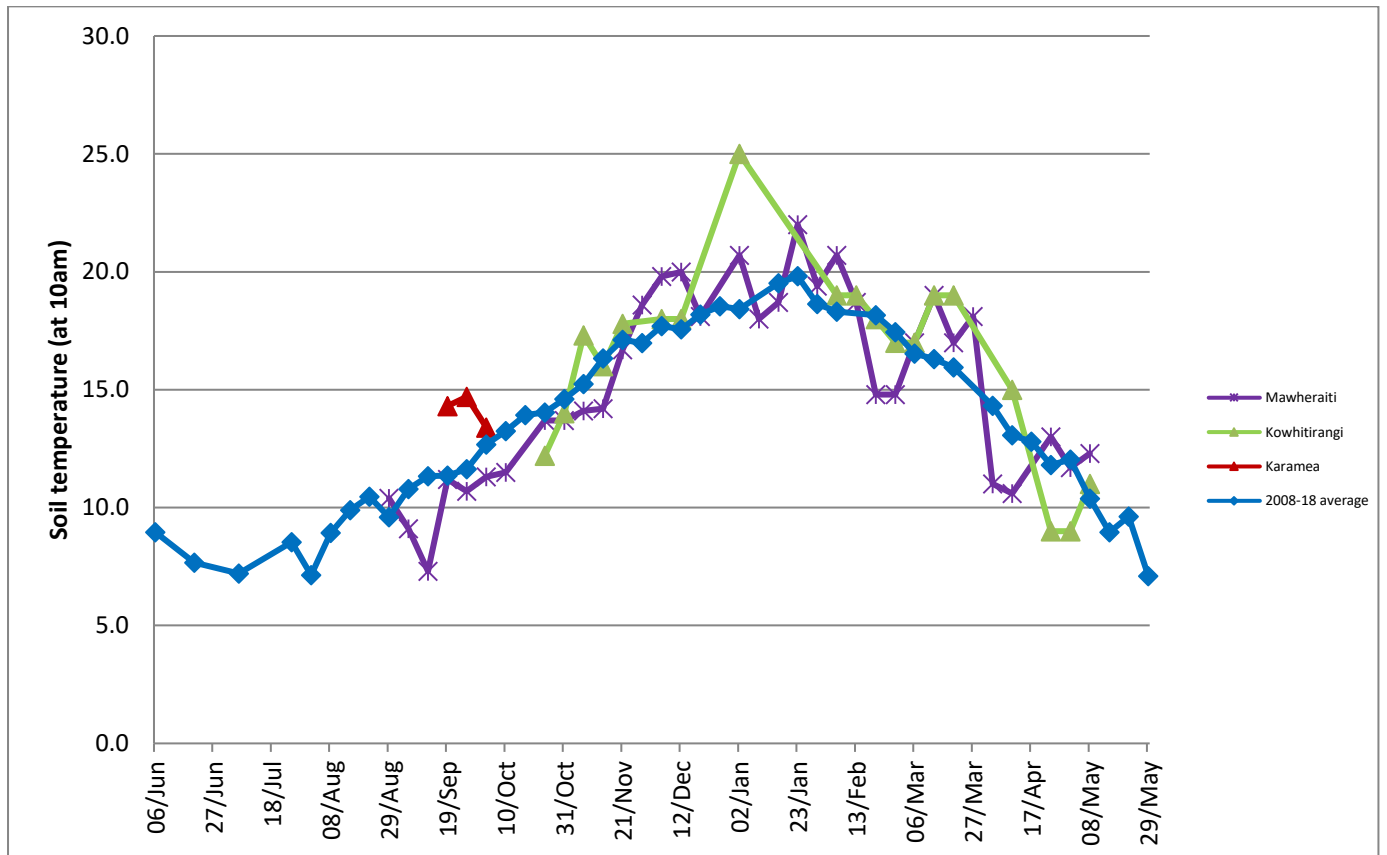
	Mawheraiti	Kowhitirangi
Average cover (kg DM/ha)	2321	1976
APC (13 February)	2320	1998
Rotation length (days)	38	28
Stocking rate	2.4	2.1
Percentage in milk	100	100
Milksolids kg/cow	1.50	1.45
Milksolids kg/ha	3.3	2.7
MS/cow (season to date)	422	412
MS/ha (season to date)	1062	839
N (kg/ha) year to date	121	178
Current N application rate kg N/ha	-	-
DM%	12.0	11.3
Pasture ME	12.6	13.2
Pasture NDF	50.6	44.1
Pasture CP	28.8	32.1
Target Intake (kg DM/cow/d)	19	18
Supplement (kg/cow/day)	6	5

Soil temperature (°C)	12.3	11
Growth Rate (kg DM/day)	38	26
Rainfall	45	145
Conditions for farmwalk	Fine and warm	Pouring with rain, very heavy with brief moments of fine
Comments		

Weekly Pasture Growth Rates



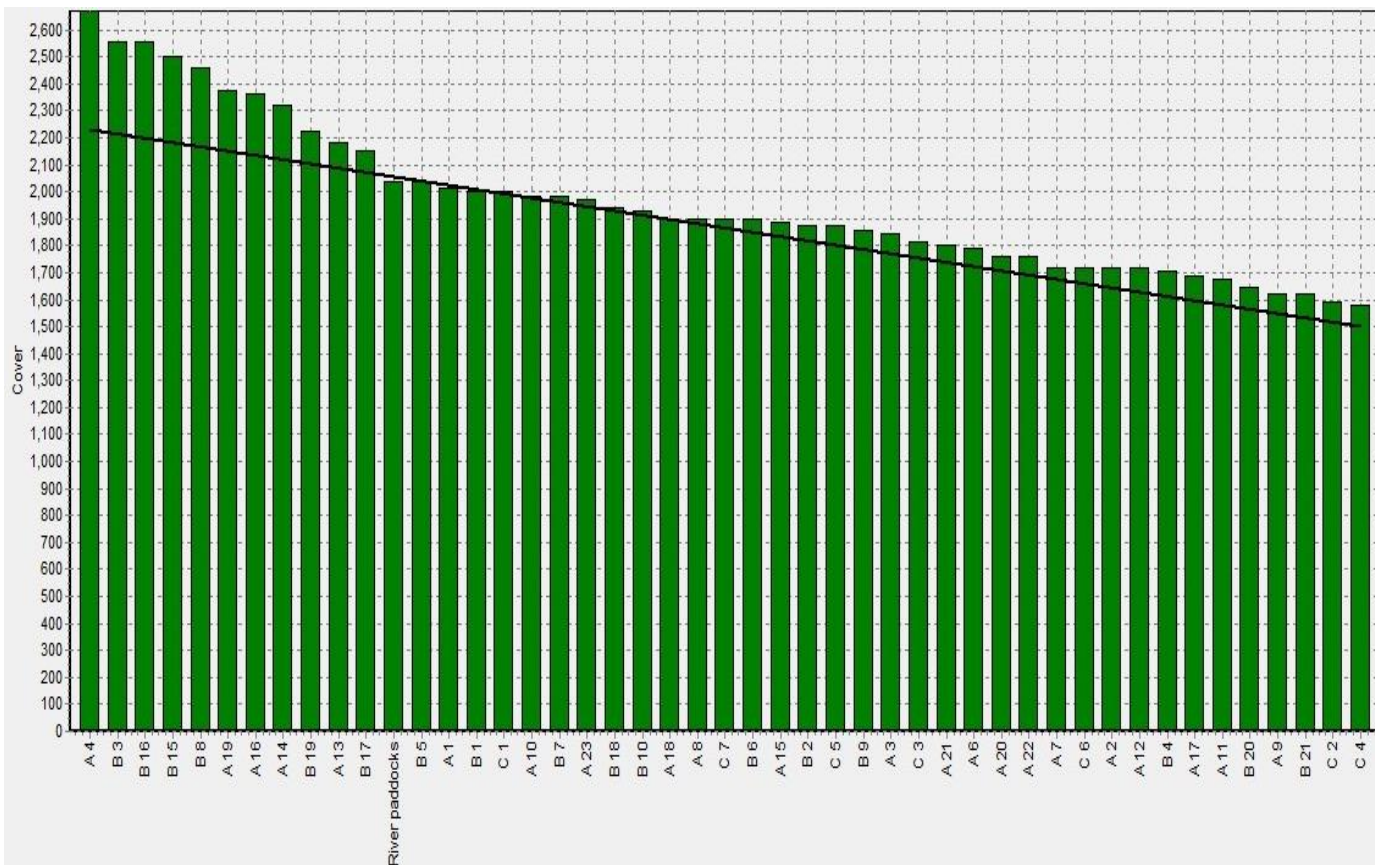
Weekly Soil Temperature



Mawheraiti



Kowhitirangi



Mawheraiti

Description	Date	RPM	% DM	% Prot	% Lipid	% ADF	% NDF	Sol Sugar	OMD %	MJME/kg
Paddock 13	7/9/2018	10.3	17.7	30.1	4.6	18.7	41.4	13.0	92.2	>12.7
Paddock 12	1/10/2018	14.0	13.5	27.7	3.7	21.8	47.1	13.9	>85	>12.7
Paddock 25	5/11/2018	14.6	13.7	22.7	4.3	23.0	43.8	15.1	89.3	>12.7
Paddock 4	4/12/2018	17.4	16.8	18.8	3.6	8.5	23.5	18.2	>85	12.7
Paddock 5	28/1/2019	8.7	15.3	25.1	3.6	22.6	51.1	7.0	84	12.3
Paddock 2	11/2/2019	16.8	11.8	29.2	3.3	24.4	53.5	5.0	>85	>12.7
Paddock 15	11/3/2019	12.4	13.5	28.8	3.6	22.0	52.6	7.7	>85	>12.7
Paddock 22	1/4/2019	13.3	12.1	31.6	4.0	22.0	50.5	4.0	84.4	12.3
Paddock River A	10/5/2019		12.0	28.8	4.3	23.4	50.6	6.0	86.6	12.6

Kowhitirangi

Description	Date	RPM	% DM	% Prot	% Lipid	% ADF	% NDF	Sol Sugar	OMD %	MJME /kg
Paddock 5	7/9/2018		17.4	26.8	4.9	18.9	39.3	18.2	91.6	13.4
Paddock 14	2/10/2018	12.0	15.1	22.4	4.4	20.7	43.2	18	>85	>12.7
Paddock 10	7/11/2018	11.8	15.8	27.3	4.0	21.2	47.6	9.2	90.4	13.2
Paddock 3	5/12/2018	8.9	16.7	20.8	4.2	22.8	47.9	13	>85	12.7
Paddock 15	30/1/2019	10.4	12.3	28.3	4.1	22.8	51.2	2.0	84.0	12.3
Paddock 17	13/2/2019	16.6	13.1	26.1	3.9	25.2	50.9	6.6	80.7	11.8
Paddock B2	13/03/2019	12.6	12.3	29.1	4.7	21.9	47.6	5.4	84.0	12.3
Paddock 6B	3/4/2019	17.6	12.9	28.0	4.0	24.3	52.6	5.1	84.7	12.4
Paddock 4A	10/5/2019		11.3	32.1	5.0	22.0	44.1	5.5	90.5	13.2