

Westland Monitor Farm Project

Weekly Update as at week ending Wednesday 16th January 2019

CO Comment

Welcome back to the West Coast Farm watch 2019. I trust everyone had an enjoyable Christmas and New Year and if you didn't quite get a break over holidays, you have one planned in January. The weather was fantastic over Christmas, although some could have done with more rain than we got, it is safe to say we are still in a better position than this time last year.

With the hot weather we will have seen a decrease in production, as the cows will have been under heat stress. In fact, for the week 1-7 January, Northern West Coast animals experienced the entire week being too hot for comfort and for the entire 7 days Friesian and crossbreed cows would have experienced a drop in milk solids. In 4 of the 7 days these same animals may have experienced health impacts as a result.

For Jersey cows, 4 out of the 7 days would have impacted their production.

When temperature humidity index (THI) reaches 68 for Friesians and 75 for Jerseys (equivalent to 21 and 25.5°C respectively at 75% relative humidity) New Zealand cows begin to experience the effects of heat stress. This is seen by a reduction in feed intake and a drop of around 10g milksolids per day per unit increase in THI.

For example, an increase in THI from 68-78 would equate to a 100g drop in milksolids/cow/day. Note that a drop in fat/protein percentage occurs before a drop in yield or milksolids is visible.

Be sure that cows have access to a good water source and shade on these days. Minimising the effects of heat stress will minimise the effects on production.

For more tips or to calculate the temperature humidity index in your area visit

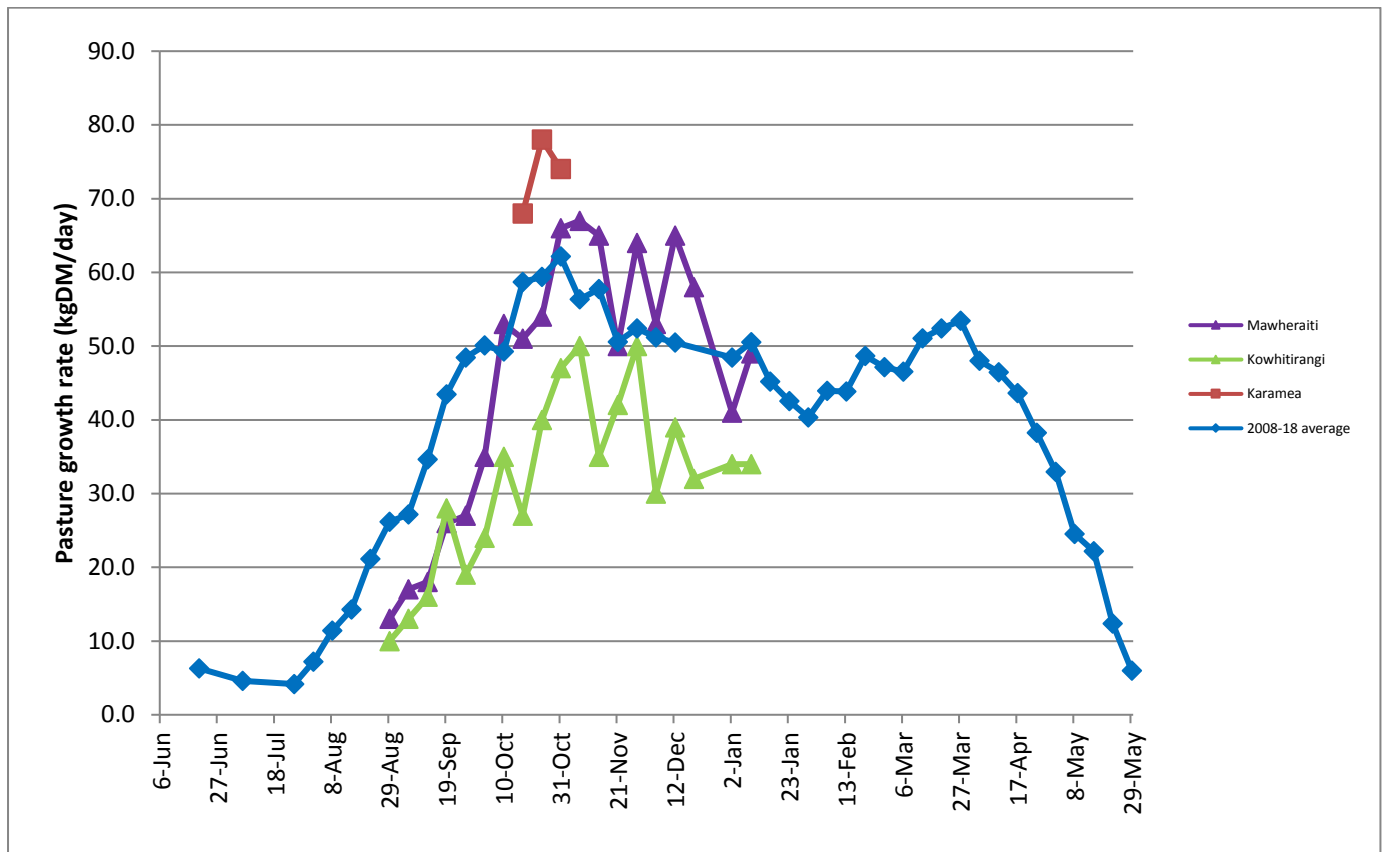
<https://www.dairynz.co.nz/animal/cow-health/heat-stress/>

Farm Summary

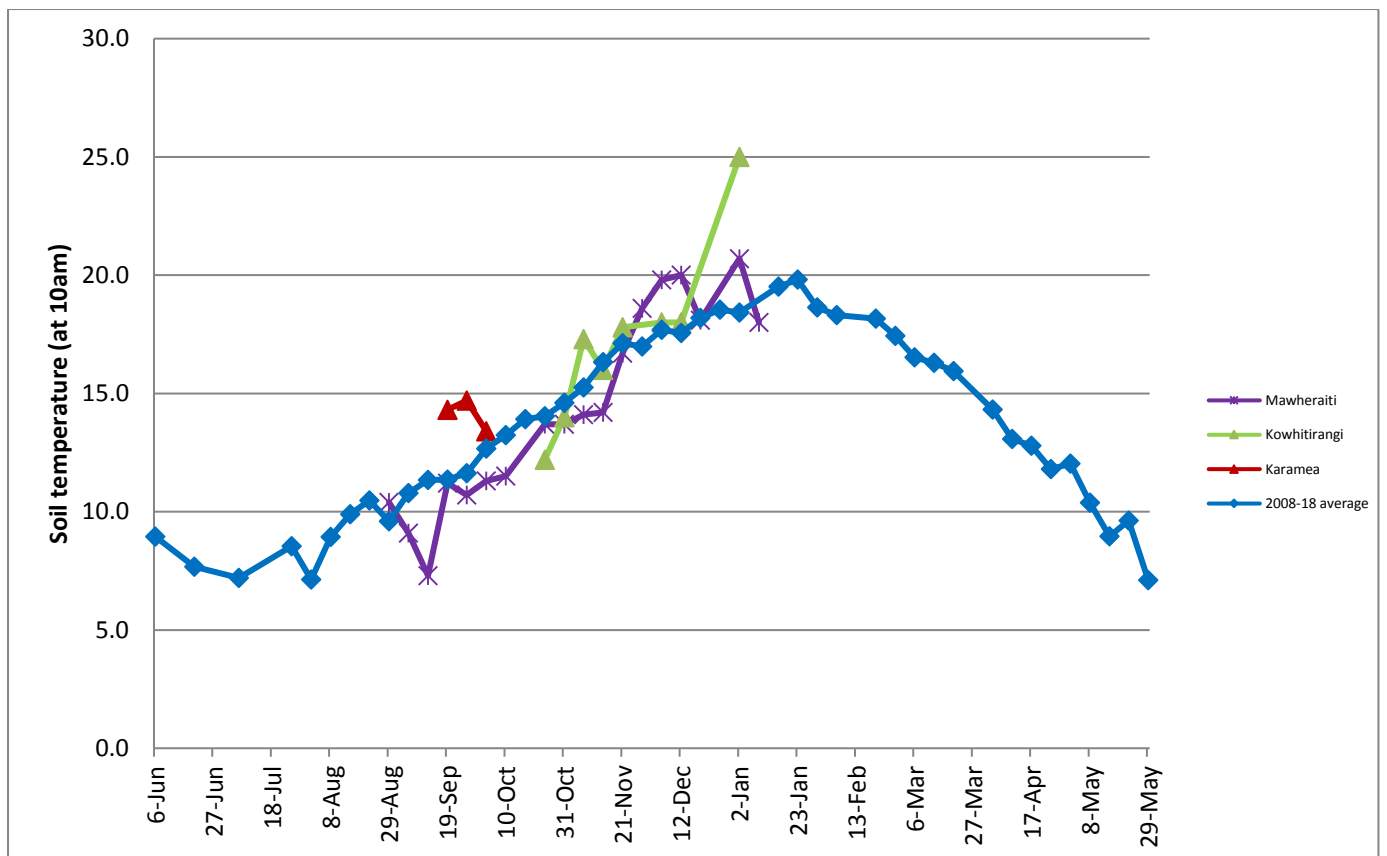
	Mawheraiti	Kowhitirangi
Average cover (kg DM/ha)	2221	2117
APC (9 January)	2245	2211
Rotation length (days)	23	28
Stocking rate	2.9	2.3
Percentage in milk	100	100
Milksolids kg/cow	1.76	1.52
Milksolids kg/ha	4.4	3.1
MS/cow (season to date)	243	245
MS/ha (season to date)	612	498
N (kg/ha) year to date	83	158
Current N application rate kg N/ha	28	
DM%	16.8	16.7
Pasture ME	12.7	12.7
Pasture NDF	42.2	47.9
Pasture CP	18.8	20.8

Target Intake (kg DM/cow/d)	20	18
Supplement (kg/cow/day)	1.1	1.8
Soil temperature (°C)	18	-
Growth Rate (kg DM/day)	49	34
Rainfall	25	75
Conditions for farmwalk	Very hot and dry	Very hot and dry
Comments		

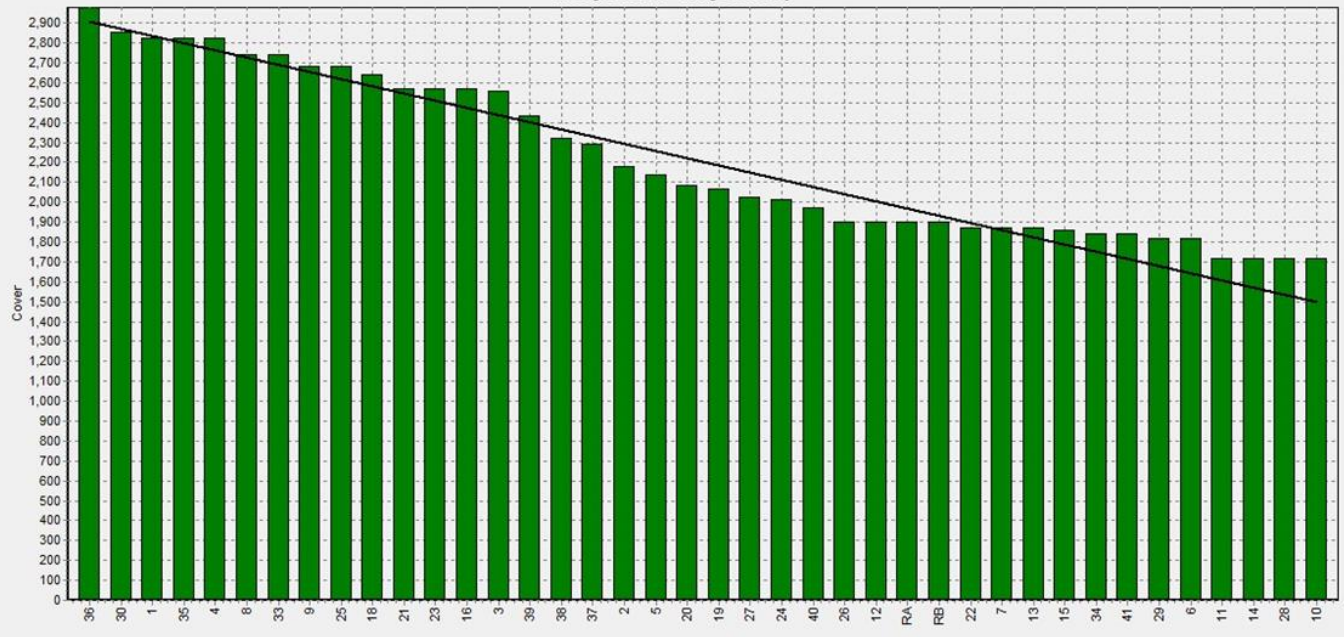
Weekly Pasture Growth Rates



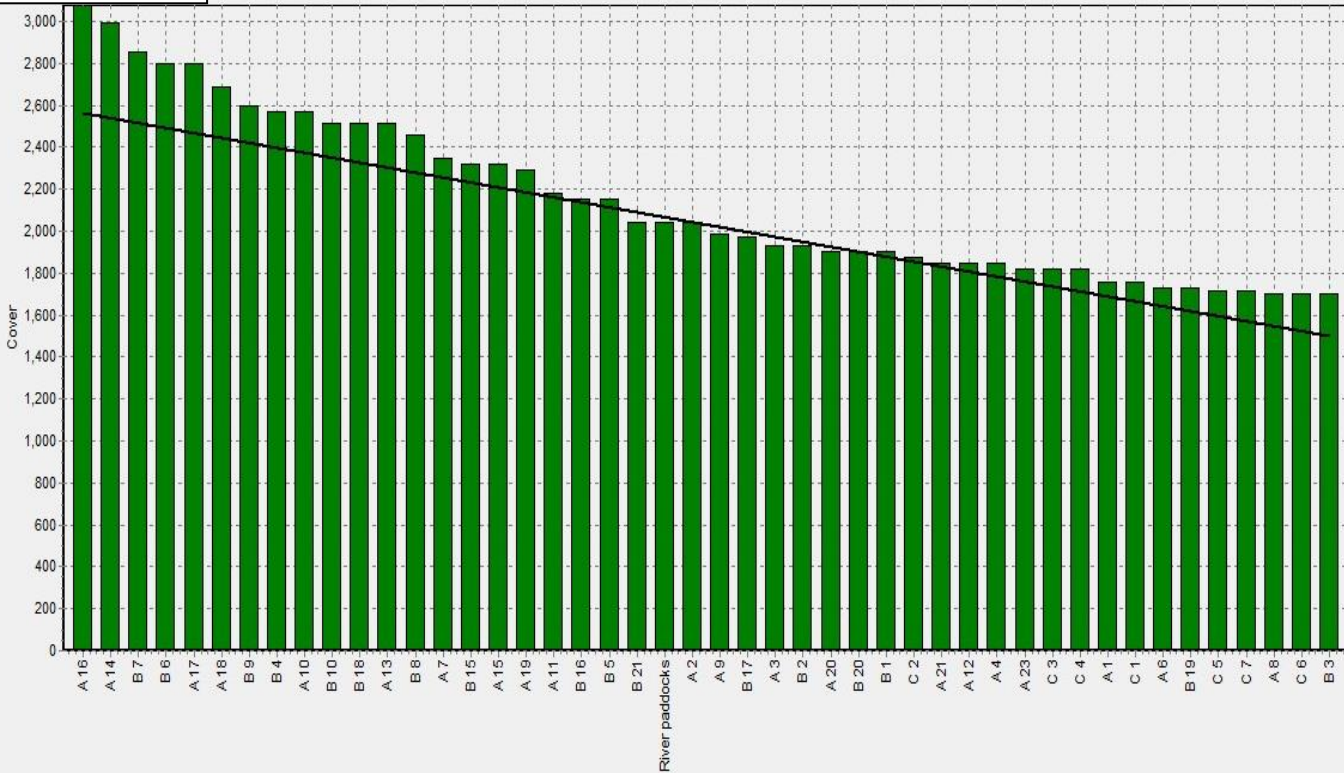
Weekly Soil Temperature



Mawheraiti



Kowhitirangi



Mawheraiti

Description	Date	RPM	% DM	% Prot	% Lipid	% ADF	% NDF	Sol Sugar	OMD %	MJME/kg
Paddock 13	7/9/2018	10.3	17.7	30.1	4.6	18.7	41.4	13.0	92.2	>12.7
Paddock 12	1/10/2018	14.0	13.5	27.7	3.7	21.8	47.1	13.9	>85	>12.7
Paddock 25	5/11/2018	14.6	13.7	22.7	4.3	23.0	43.8	15.1	89.3	>12.7
Paddock 4	4/12/2018	17.4	16.8	18.8	3.6	8.5	23.5	18.2	>85	12.7

