

Westland Monitor Farm Project

Weekly Update as at week ending Wednesday 17th October 2018

CO comment

With the first round of post calving discussion groups completed across the West Coast, it is evident that this is the best spring the region has seen in what seems like a very long time. Many farmers are working on cropping at present and/or harvesting some early silage/baleage. For information on all things feed related visit <https://www.dairynz.co.nz/feed>

With mating upon us, it is important to be vigilant with heat detection if we are determined to get cows in calf early. Be proactive and assess your mating stats each week and see if targets are being met. Heat detection tips can be found at <https://www.dairynz.co.nz/animal/reproduction-and-mating/heat-detection/>

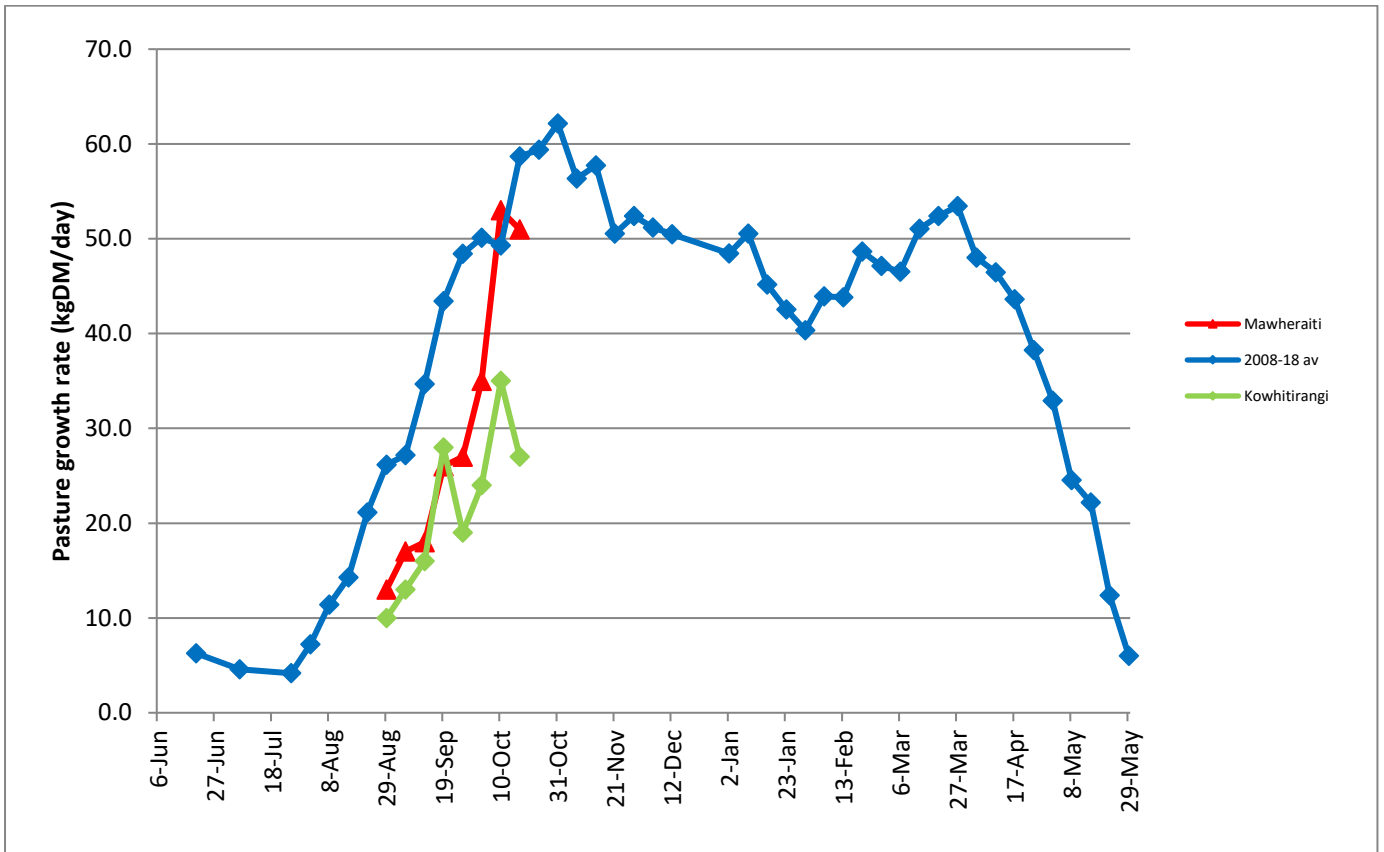
Dairy Industry Awards entries are open and if you or your staff are interested in entering now is the time to do it. Entries close at midnight on the 16th November 2018. To find out more and enter visit <https://www.dairyindustryawards.co.nz/>

Farm Summary

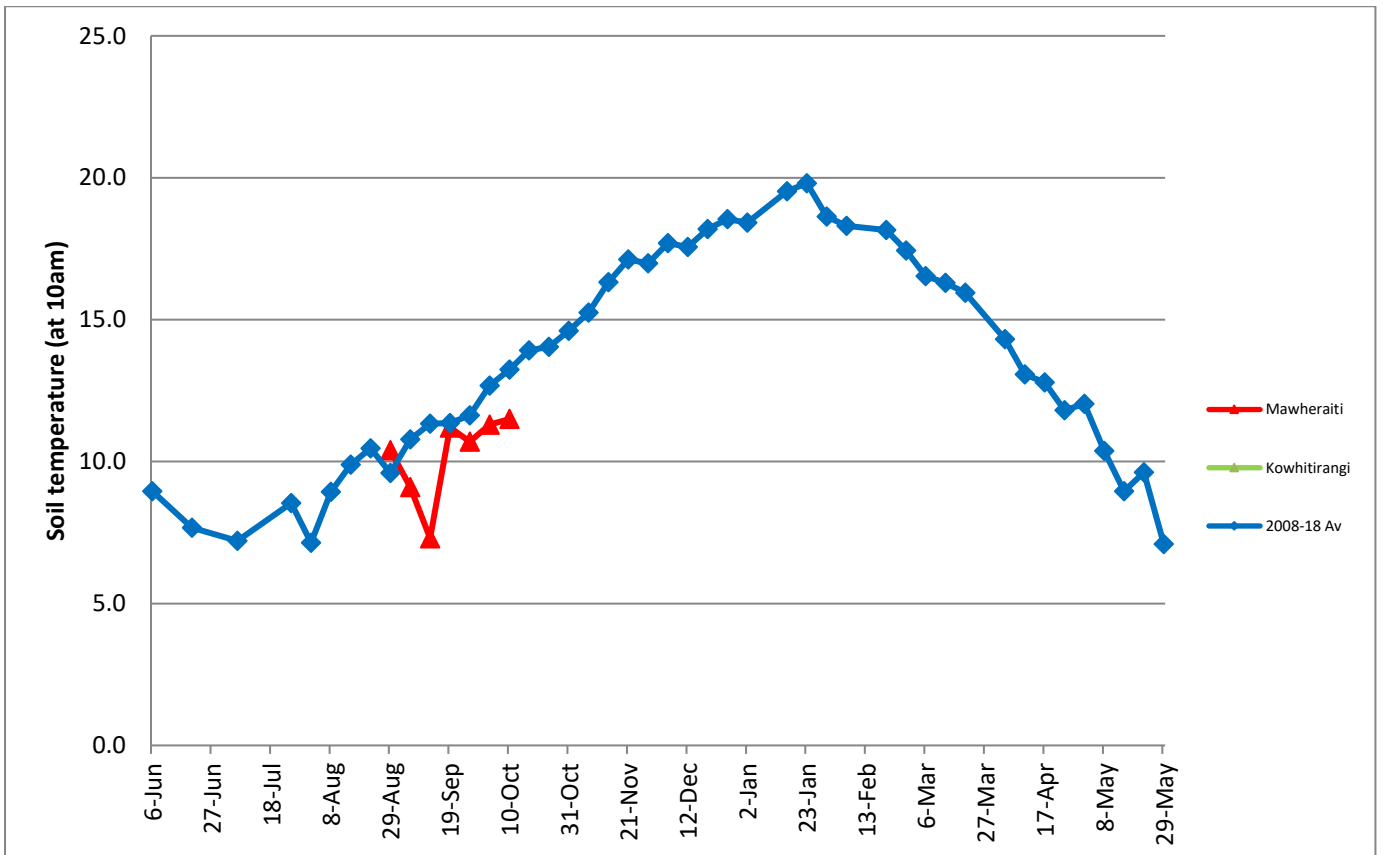
	Mawheraiti	Kowhitirangi
Average cover (kg DM/ha)	2133	2040
APC (10 October 2018)	2199	2025
Rotation length (days)	25	27
Stocking rate	2.8	2.1
Percentage in milk		
Milksolids kg/cow	2.56	2.05
Milksolids kg/ha	6.0	4.1
MS/cow (season to date)	89.6	88.0
MS/ha (season to date)	40.5	31.4
N (kg/ha) year to date		
Current N application rate kg N/ha	37	23
	1 st October	2 nd October
DM%	13.5	15.1
Pasture ME	>12.5	>12.5
Pasture NDF	47.1	43.2
Pasture CP	27.7	22.4
Target Intake (kg DM/cow/d)	20	18
Supplement (kg/cow/day)	0.71	2.4
Soil temperature (°C)	9.9	
Growth Rate (kg DM/day)	51	27
Rainfall	13	95
Conditions for farmwalk	Fine and nice	Trying to rain, cool, fine
Comments		

NB: pasture quality data are for 1 sample collected from each farm

Weekly Pasture Growth Rates

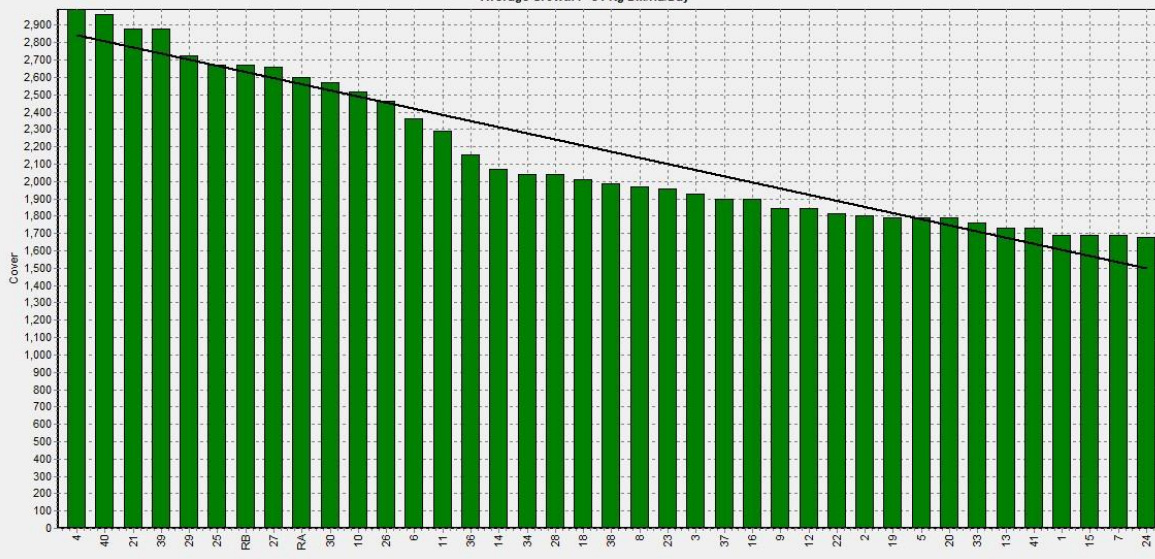


Weekly Soil Temperature



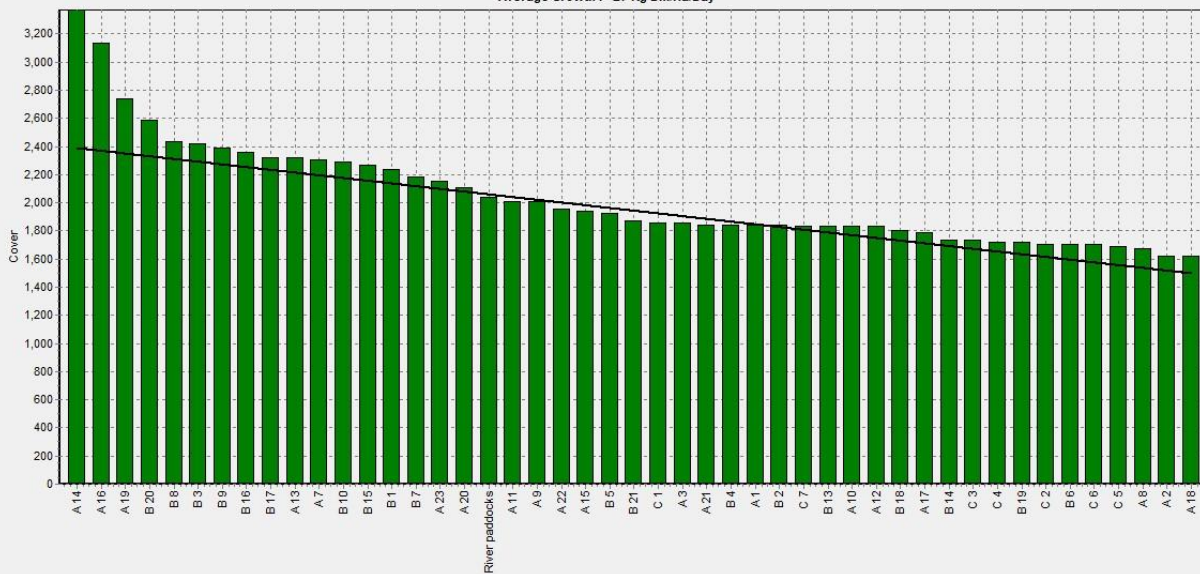
Mawheraiti

Farm Name:- STU AND DEB BLAND
 Date Read :- 15/10/2018
 Average Cover :- 2133 Kg DM/Ha
 Average Growth :- 51 Kg DM/Ha/Day



Kowhitirangi

Farm Name:- ANNA AND JEREMY HART
 Date Read :- 17/10/2018
 Average Cover :- 2040 Kg DM/Ha
 Average Growth :- 27 Kg DM/Ha/Day



Description	Date	RPM	% DM	% Prot	% Lipid	% ADF	% NDF	Sol Sugar	OMD %	MJME /kg
Paddock 13	7/9/2018	10.3	17.7	30.1	4.6	18.7	41.4	13.0	92.2	>12.8
Paddock 12	1/10/2018	14.0	13.5	27.7	3.7	21.8	47.1	13.9	>85	>12.7

Kowhitirangi

Description	Date	RPM	% DM	% Prot	% Lipid	% ADF	% NDF	Sol Sugar	OMD %	MJME/kg
Paddock 5	7/9/2018		17.4	26.8	4.9	18.9	39.3	18.2	91.6	13.4
Paddock 14	2/10/2018	12.0	15.1	22.4	4.4	20.7	43.2	18	>85	>12.7