

Westland Monitor Farm Project

Weekly Update as at week ending Wednesday 17th April 2019

CO Comment

CRV-AmBreed donates 1500 straws to the WCFFT. This helps the trust run the monitor farm program. This year the decision has been made to extend the tender process for farmers. Traditionally the tender process has been completed by the end of April. This year we will accept tenders into May. If you haven't submitted a tender and there are some CRV bulls that you would like to use on your farm, then it is a great opportunity to help a rural community project alongside your normal business practice.

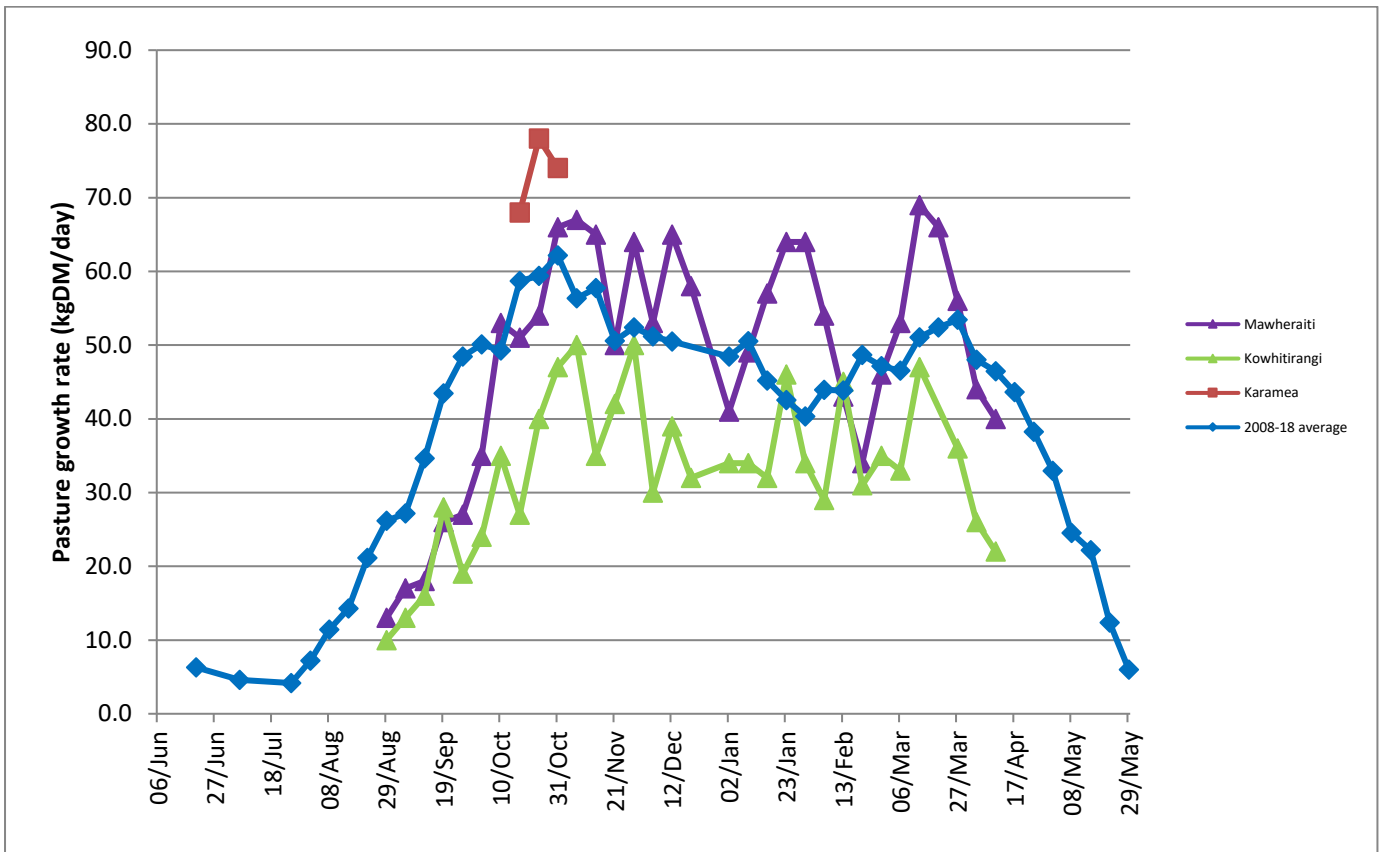
Have a look at the bulls in the catalogue at <https://www.crv4all.co.nz/download/2018-sire-catalogue/> and if there is something of interest email angela.leslie@dairynz.co.nz for a tender form.

This is a great opportunity to get some funding into the community to run a project that is beneficial to the farming community.

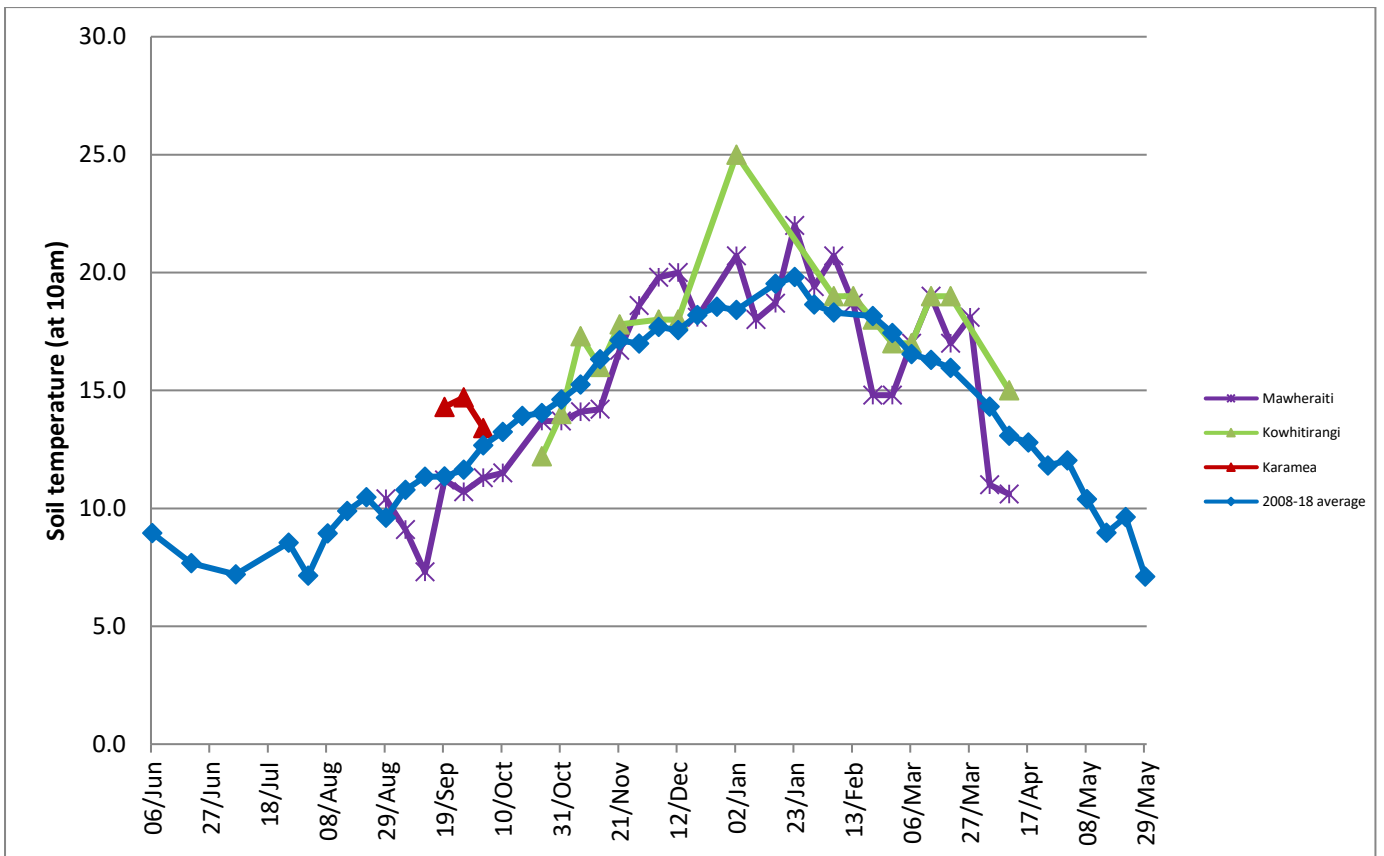
Farm Summary

	Mawheraiti	Kowhitirangi
Average cover (kg DM/ha)	2329	2065
APC (13 February)	2410	2068
Rotation length (days)	25	30
Stocking rate	2.4	2.1
Percentage in milk	100	100
Milksolids kg/cow	1.47	1.2
Milksolids kg/ha	3.2	2.4
MS/cow (season to date)	385	TBA
MS/ha (season to date)	965	TBA
N (kg/ha) year to date	121	178
Current N application rate kg N/ha	-	-
DM%	12.1	12.9
Pasture ME	12.3	12.4
Pasture NDF	50.5	52.6
Pasture CP	31.6	28.0
Target Intake (kg DM/cow/d)	20	18
Supplement (kg/cow/day)	0	2
Soil temperature (°C)	10.6	15.0
Growth Rate (kg DM/day)	40	22
Rainfall	32	70
Conditions for farmwalk	Hot and fine	Hot and fine
Comments		Milk solids data to be confirmed and updated

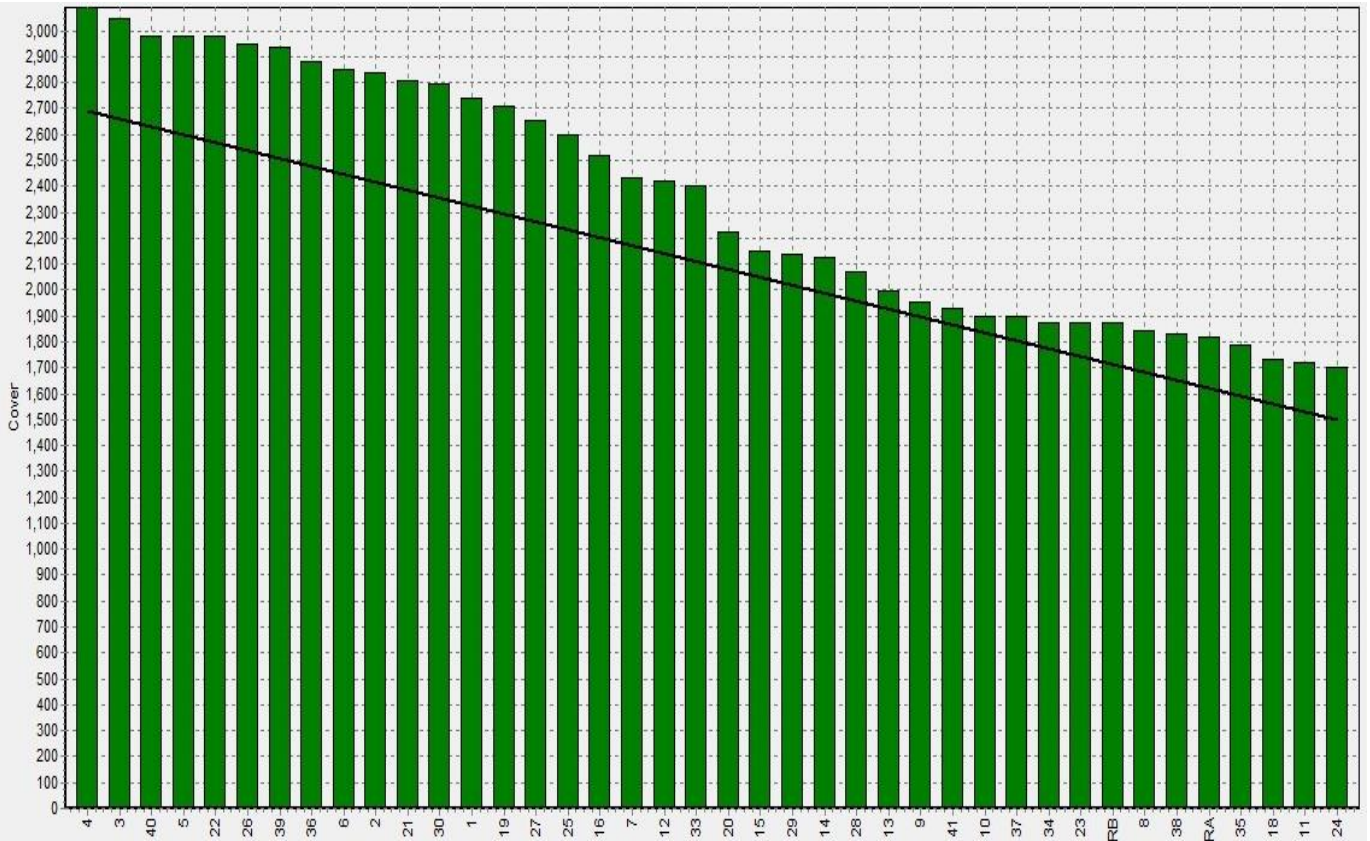
Weekly Pasture Growth Rates



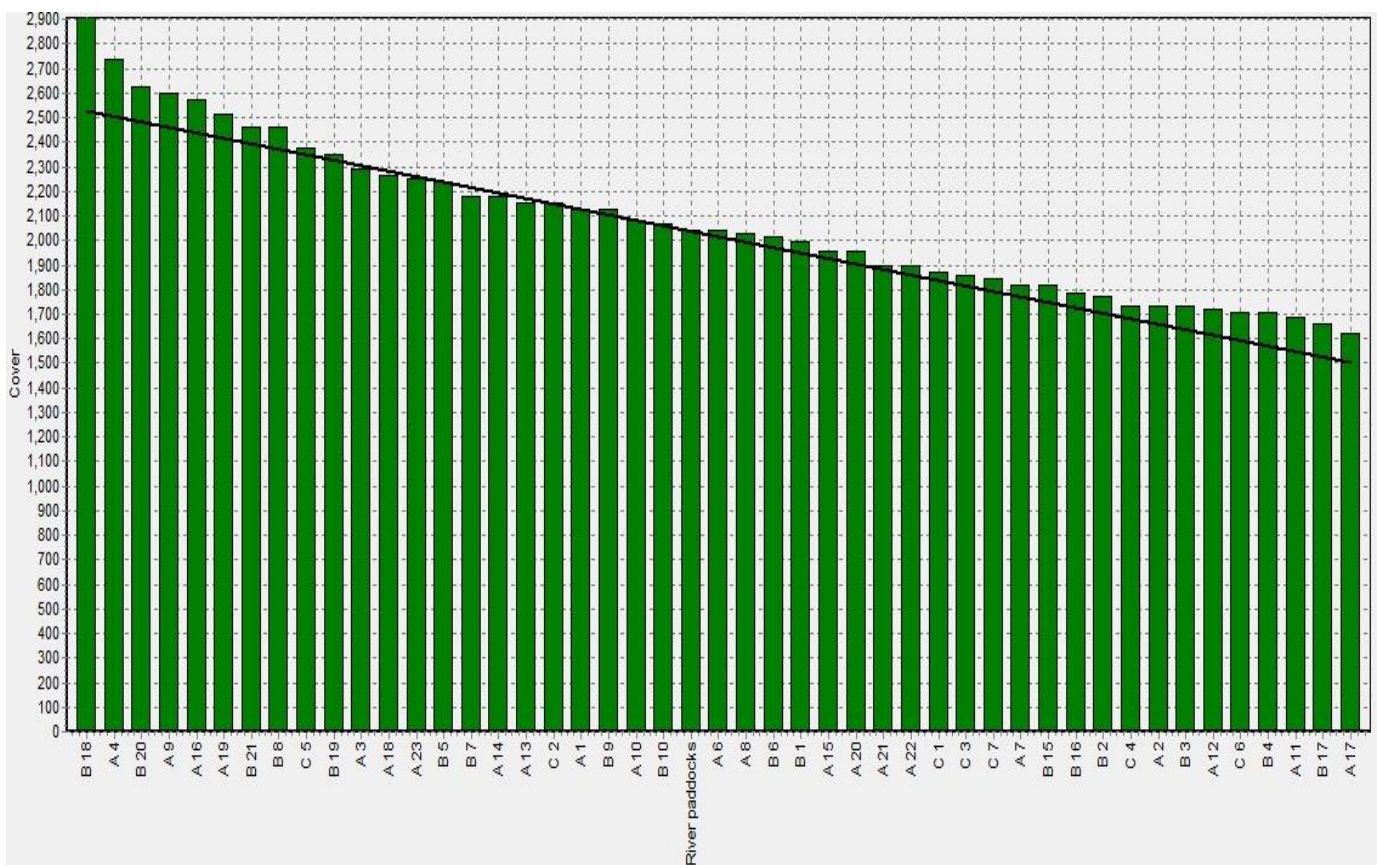
Weekly Soil Temperature



Mawheraiti



Kowhitirangi



Mawheraiti

Description	Date	RPM	% DM	% Prot	% Lipid	% ADF	% NDF	Sol Sugar	OMD %	MJME/kg
Paddock 13	7/9/2018	10.3	17.7	30.1	4.6	18.7	41.4	13.0	92.2	>12.7
Paddock 12	1/10/2018	14.0	13.5	27.7	3.7	21.8	47.1	13.9	>85	>12.7
Paddock 25	5/11/2018	14.6	13.7	22.7	4.3	23.0	43.8	15.1	89.3	>12.7
Paddock 4	4/12/2018	17.4	16.8	18.8	3.6	8.5	23.5	18.2	>85	12.7
Paddock 5	28/1/2019	8.7	15.3	25.1	3.6	22.6	51.1	7.0	84	12.3
Paddock 2	11/2/2019	16.8	11.8	29.2	3.3	24.4	53.5	5.0	>85	>12.7
Paddock 15	11/3/2019	12.4	13.5	28.8	3.6	22.0	52.6	7.7	>85	>12.7
Paddock 22	1/4/2019	13.3	12.1	31.6	4.0	22.0	50.5	4.0	84.4	12.3

Kowhitirangi

Description	Date	RPM	% DM	% Prot	% Lipid	% ADF	% NDF	Sol Sugar	OMD %	MJME /kg
Paddock 5	7/9/2018		17.4	26.8	4.9	18.9	39.3	18.2	91.6	13.4
Paddock 14	2/10/2018	12.0	15.1	22.4	4.4	20.7	43.2	18	>85	>12.7
Paddock 10	7/11/2018	11.8	15.8	27.3	4.0	21.2	47.6	9.2	90.4	13.2
Paddock 3	5/12/2018	8.9	16.7	20.8	4.2	22.8	47.9	13	>85	12.7
Paddock 15	30/1/2019	10.4	12.3	28.3	4.1	22.8	51.2	2.0	84.0	12.3
Paddock 17	13/2/2019	16.6	13.1	26.1	3.9	25.2	50.9	6.6	80.7	11.8
Paddock B2	13/03/19	12.6	12.3	29.1	4.7	21.9	47.6	5.4	84.0	12.3
Paddock 6B	3/4/19	17.6	12.9	28.0	4.0	24.3	52.6	5.1	84.7	12.4