

# Westland Monitor Farm Project

Weekly Update as at week ending Wednesday 19<sup>th</sup> December 2018

## CO comment

2018 is closing in marked contrast to December 2017, with surplus grass still on farms, much silage already stored away and cows producing at higher levels. Take some credit for this. While good weather always helps, successful management of milk production also requires plenty of planning, organisation and timely decision making.

Maintaining pasture quality for milk production by maintaining grazing residual target levels remains a top priority (even through Christmas!). Over 12 months most paddocks will have 9 to 10 grazings. It only takes one poor grazing event to adversely impact the next 2 or 3 grazing events. Nitrogen fertiliser boosted ryegrass pastures will have higher yields (N boosts leaf size) at lower leaf stages, potentially requiring grazing before the 2 ½ leaf stage. Consider the farm's feed demand compared to the amount of pasture grown. A more advanced leaf stage (longer grazing interval) may be more favourable on higher stocked farms.

Christmas is a good time for farmers to tell their staff they value them and want them to stay. A lot of people decide to change jobs over the Christmas break.

DairyNZ wishes all readers a refreshing and rewarding Christmas and New Year period.

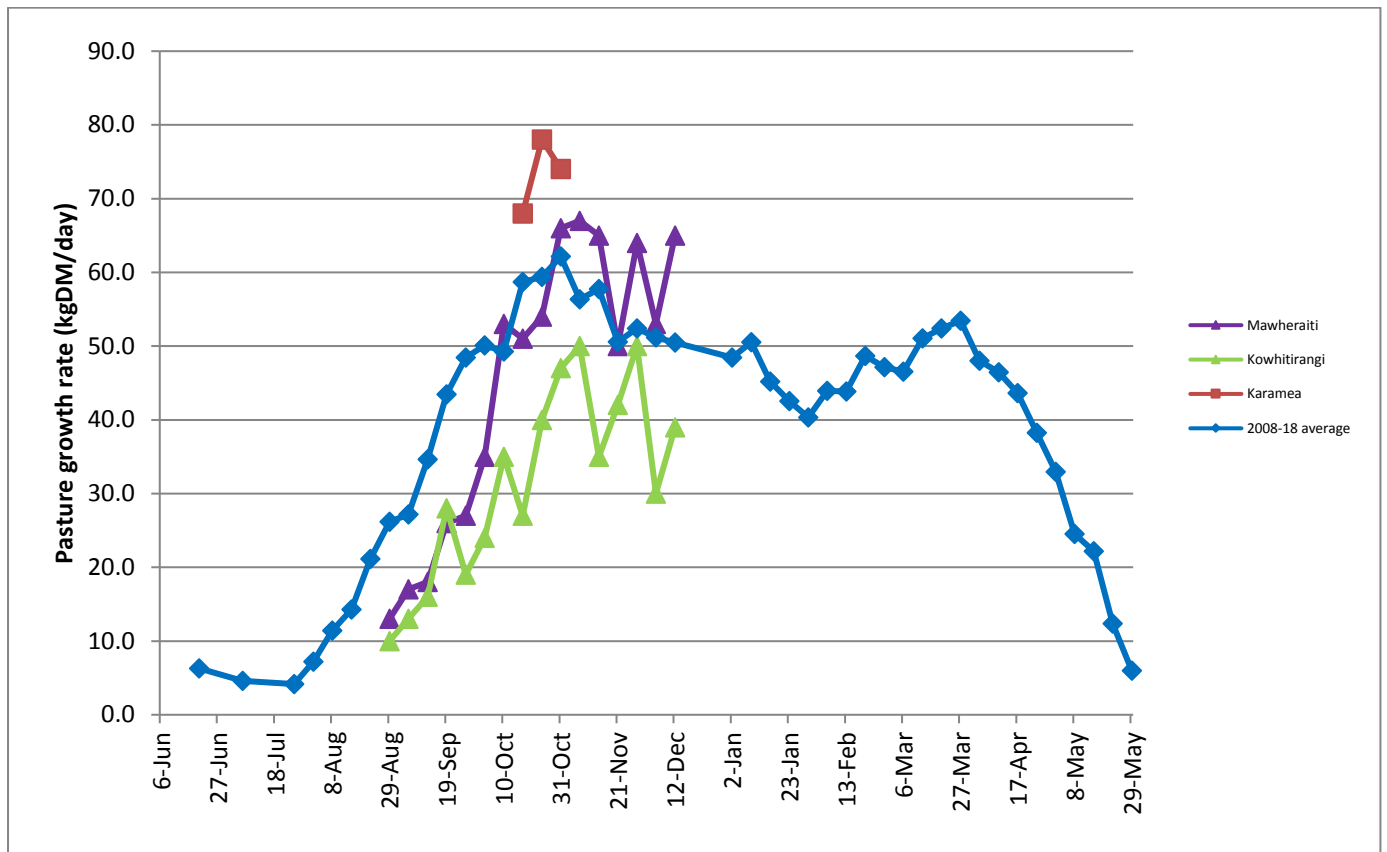
The Weekly Farm summary will take a break over the next few weeks and resume publication in mid-January 2019.

## Farm Summary

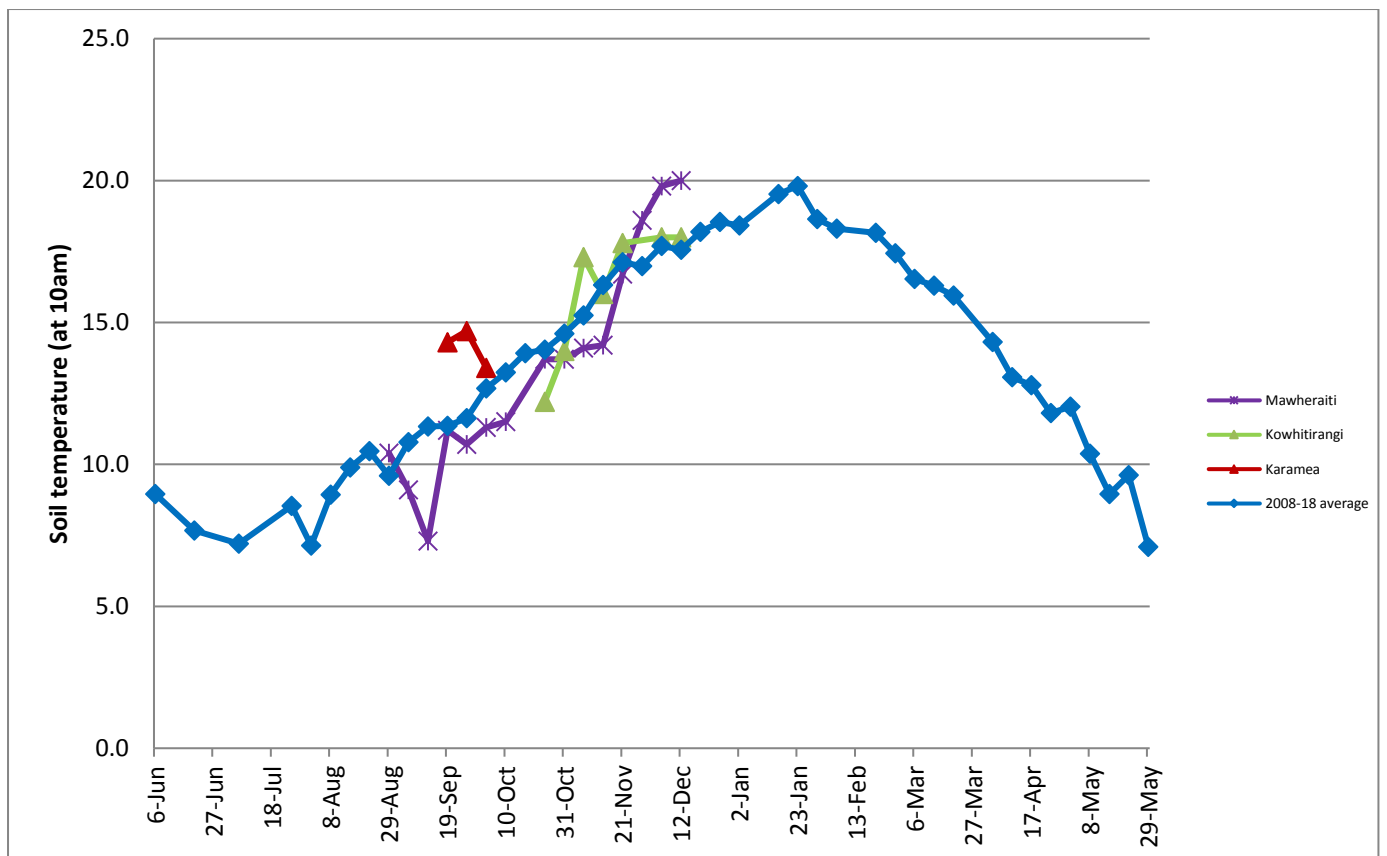
	Mawheraiti	Kowhitirangi
Average cover (kg DM/ha)	2264	2258
APC (12 December)	2258	2152
Rotation length (days)	23	30
Stocking rate	3.0	2.4
Percentage in milk	100	100
Milksolids kg/cow	1.83	1.63
Milksolids kg/ha	4.6	3.3
MS/cow (season to date)	199	194
MS/ha (season to date)	489	405
N (kg/ha) year to date	66	131
Current N application rate kg N/ha	28	
DM%	16.8	16.7
Pasture ME	12.7	12.7
Pasture NDF	42.2	47.9
Pasture CP	18.8	20.8
Target Intake (kg DM/cow/d)	20	20
Supplement (kg/cow/day)		1.8
Soil temperature (°C)	20	18
Growth Rate (kg DM/day)	65	39

Rainfall	37	25
Conditions for farmwalk	Hot and fine	Hot and muggy: close to rain
Comments		

## Weekly Pasture Growth Rates



## Weekly Soil Temperature



### Mawheraiti



### Kowhitirangi

