

Westland Monitor Farm Project

Weekly Update as at week ending Wednesday 20th February 2019

CO Comment

Last week DairyNZ held its West Coast consultation meeting on the M. Bovis levy. One of the main things that came from the day was to make sure that you have your say and submit your feedback.

Dairy farmers are being strongly encouraged to give their feedback on how the sector will pay its share of the *Mycoplasma bovis* (*M. bovis*) response programme.

After the decision last May to move to eradication of *M. bovis*, the government estimated the total expected response cost over 10 years to be \$870 million. The government is paying \$591 million, the dairy sector \$262 million and the beef sector \$17.4 million.

DairyNZ also announced in December that the biosecurity response levy would be required to pay for dairy's contribution and consultation would begin in early 2019.

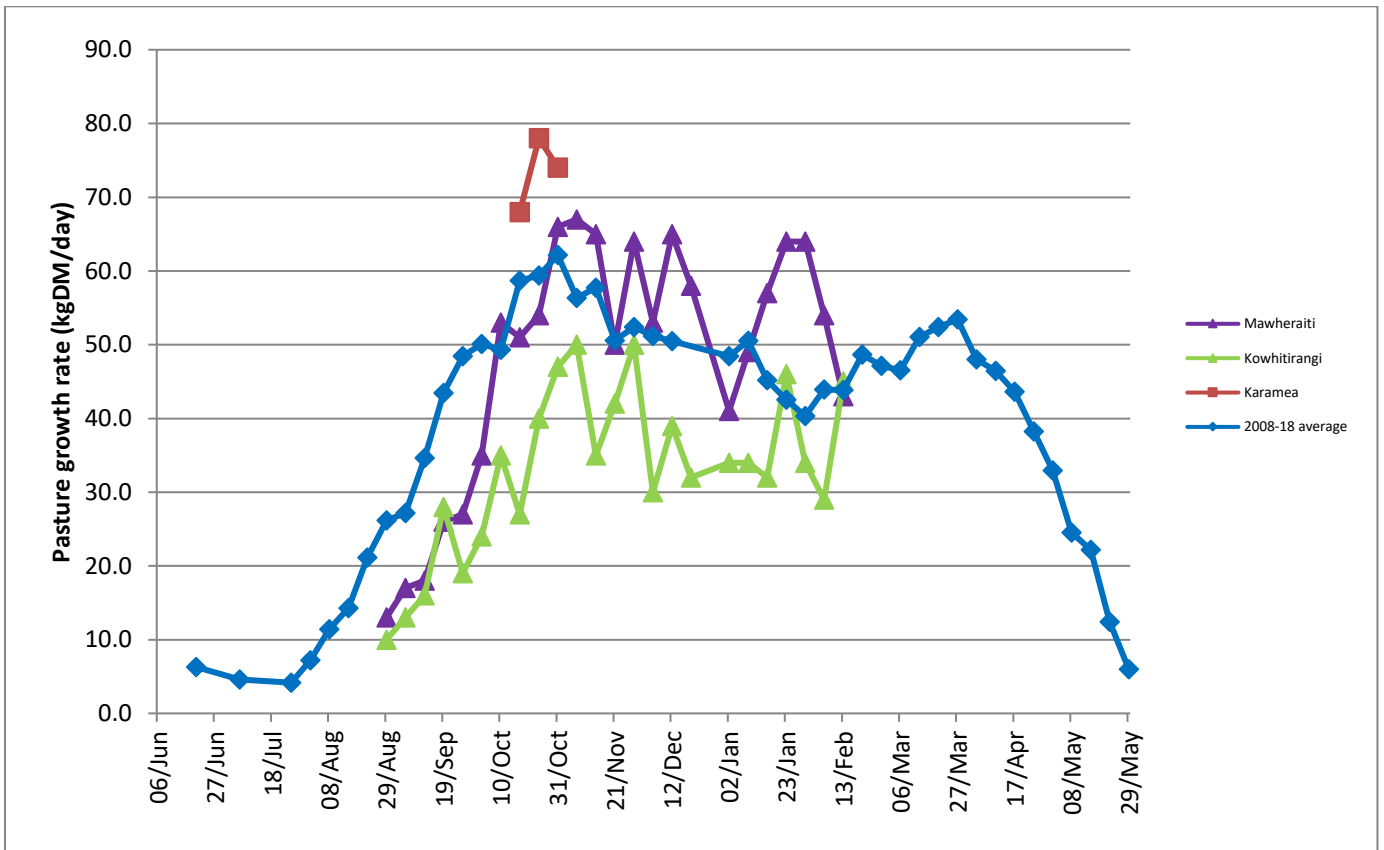
For more information on the proposal visit <https://www.dairynz.co.nz/news/latest-news/dairy-farmer-input-sought-for-sector-s-biosecurity-response-levy/>

Feedback needs to be submitted by February 28 2019 and can be done online here <https://www.dairynz.co.nz/business/biosecurity/biosecurity-response-levy>

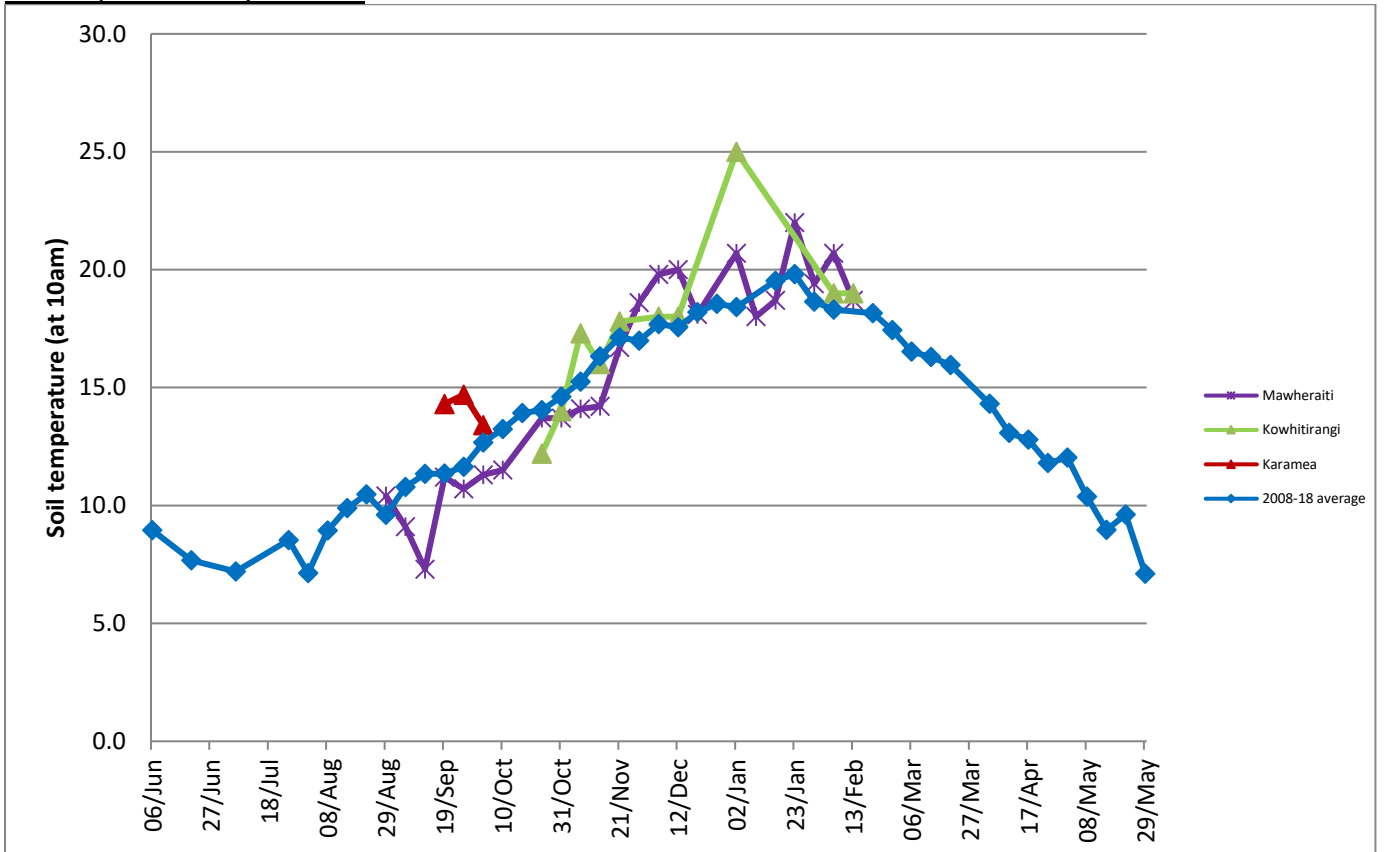
Farm Summary

	Mawheraiti	Kowhitirangi
Average cover (kg DM/ha)	2319	2158
APC (13 February)	2316	2104
Rotation length (days)	25	28
Stocking rate	2.7	2.2
Percentage in milk	100	100
Milksolids kg/cow	1.63	1.26
Milksolids kg/ha	4.0	2.6
MS/cow (season to date)	303	295
MS/ha (season to date)	761	601
N (kg/ha) year to date	104	178
Current N application rate kg N/ha	28	-
DM%	11.8	13.1
Pasture ME	>12.7	11.8
Pasture NDF	53.5	50.9
Pasture CP	29.2	26.1
Target Intake (kg DM/cow/d)	20	18
Supplement (kg/cow/day)	1	1.5
Soil temperature (°C)	18.7	19.0
Growth Rate (kg DM/day)	43	45
Rainfall	5	60
Conditions for farmwalk	Farm very dry, irrigation going flat out	Fine day, farm looking good
Comments		

Weekly Pasture Growth Rates



Weekly Soil Temperature



Mawheraiti



Kowhitirangi

