

Westland Monitor Farm Project

Weekly Update as at week ending Wednesday 20th March 2019

CO Comment

Over the last two weeks the West Coast Focus Farm Trust had two field days at the new monitor farms to introduce the farmers themselves and their farm systems.

Anna and Jeremy Hart are first time farm owners in Kowhitirangi, after having had experience 'over the hill' with large herds. They saw the West Coast as a unique opportunity to buy their first farm and are giving it their all.

Stu and Debbie Bland at Mawheraiti, near Reefton, have been there for 11 years. They also saw the unique opportunities the Coast had to offer when they chose to buy their farm here. In that time, they have honed their business to get some great results when comparing to benchmarking.

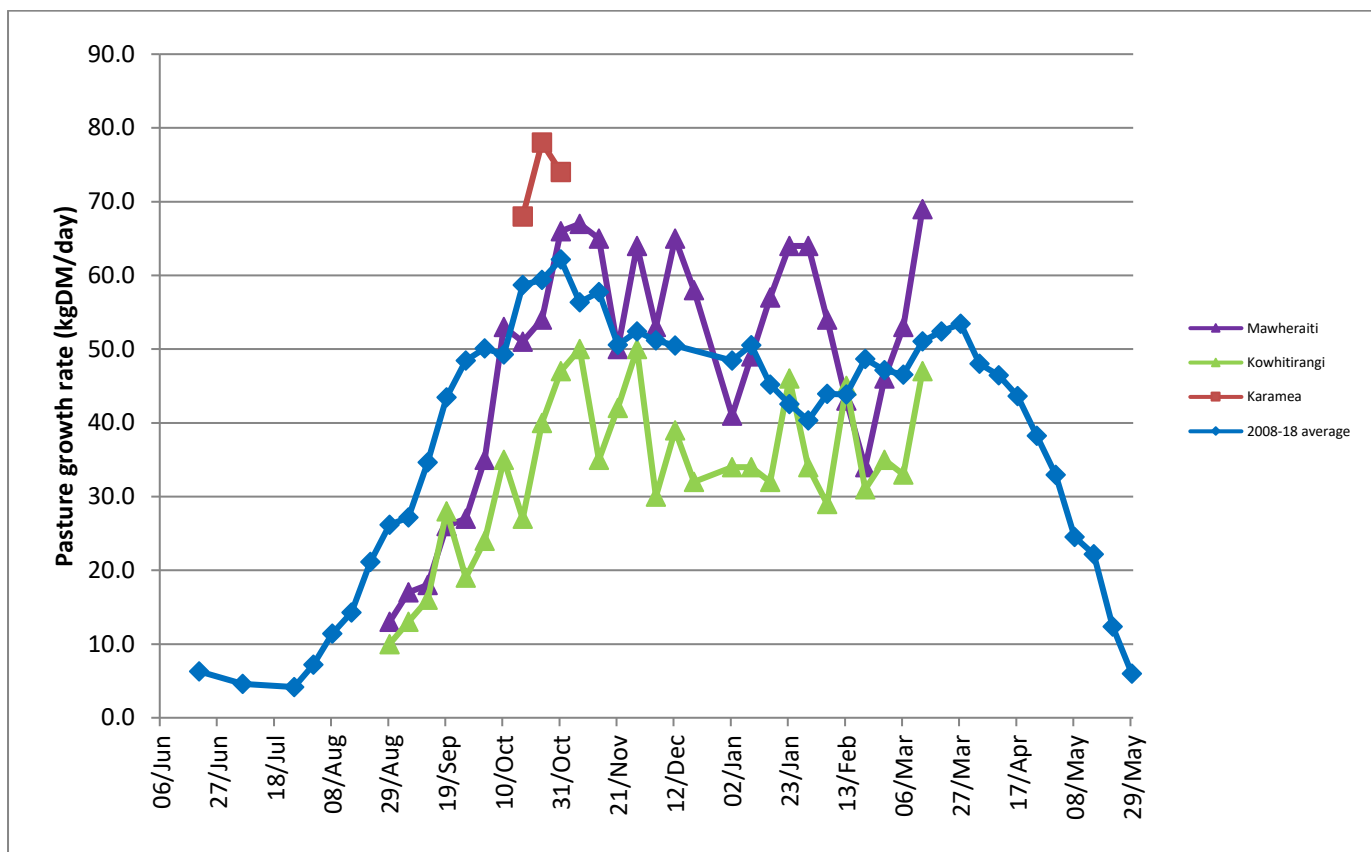
On Thursday the 21st of March there was a wrap up of the 3 outgoing monitor farmers data. Presentation of the financial data by Robb Macbeth (DairyNZ Farm Business Specialist) looked at the differences between the farm systems in terms of profitability and gave a greater understanding of tools available to help farmers with their own businesses.

David Chapman (DairyNZ Principal Scientist) was on hand to run through the physical data. David had done some analysis of the 3 farms which prompted some stimulating discussion within the group and bought the dataset to life for the audience. The opportunity to ask questions as we went through the data was beneficial, allowing participants to take home information relevant to their farms.

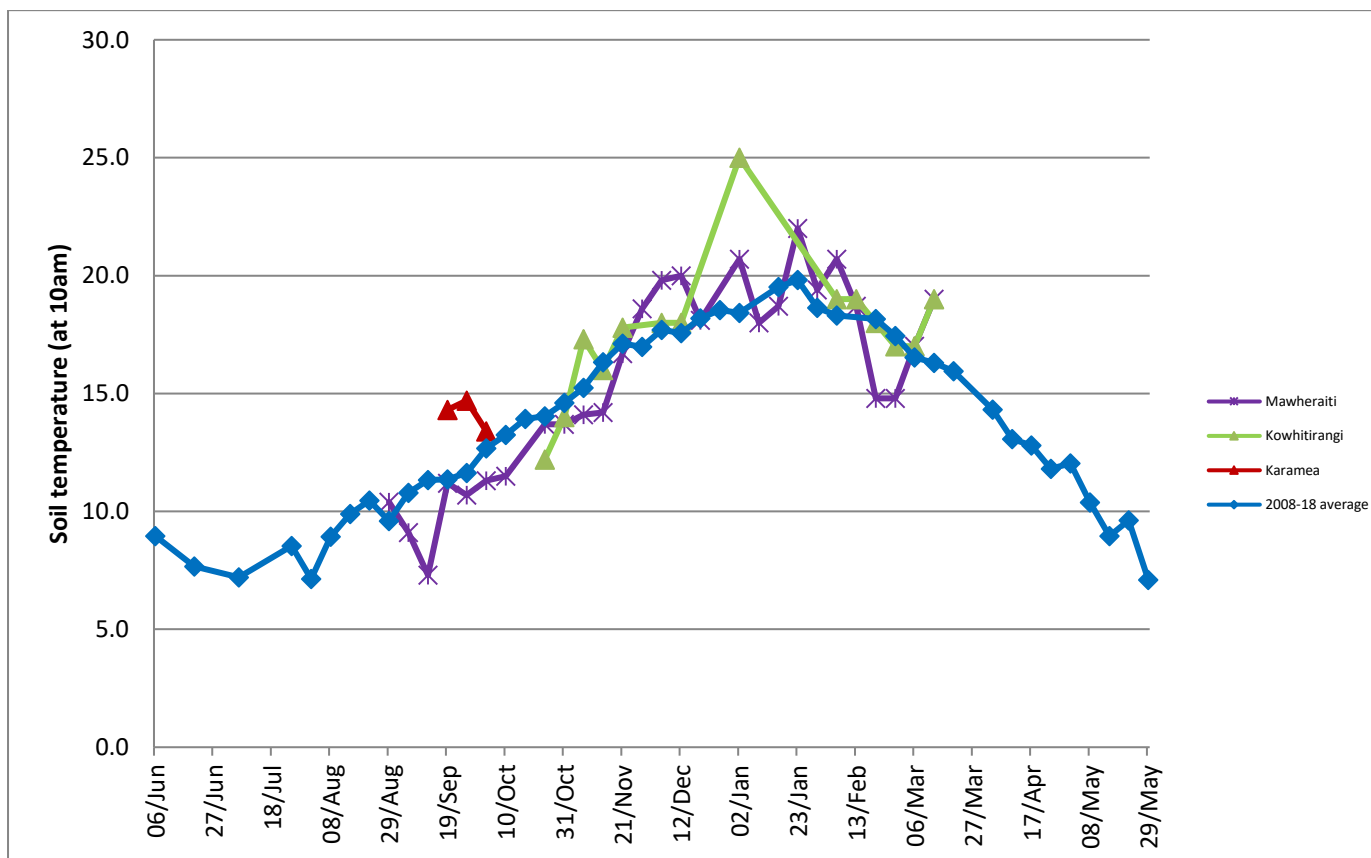
Farm Summary

	Mawheraiti	Kowhitirangi
Average cover (kg DM/ha)	2328	2285
APC (13 February)	2199	2179
Rotation length (days)	25	30
Stocking rate	2.4	2.2
Percentage in milk	100	100
Milksolids kg/cow	1.60	1.26
Milksolids kg/ha	3.7	2.5
MS/cow (season to date)	347	339
MS/ha (season to date)	872	690
N (kg/ha) year to date	121	178
Current N application rate kg N/ha	28	-
DM%	11.8	13.1
Pasture ME	12.9	11.8
Pasture NDF	53.5	50.9
Pasture CP	29.2	26.1
Target Intake (kg DM/cow/d)	20	18
Supplement (kg/cow/day)	2.7	1
Soil temperature (°C)	19	19
Growth Rate (kg DM/day)	69	47
Rainfall	36	147
Conditions for farmwalk	Hot and fine	Hot and fine
Comments		

Weekly Pasture Growth Rates



Weekly Soil Temperature



Mawheraiti



Kowhitirangi

