

Westland Monitor Farm Project

Weekly Update as at week ending Wednesday 21 September 2018

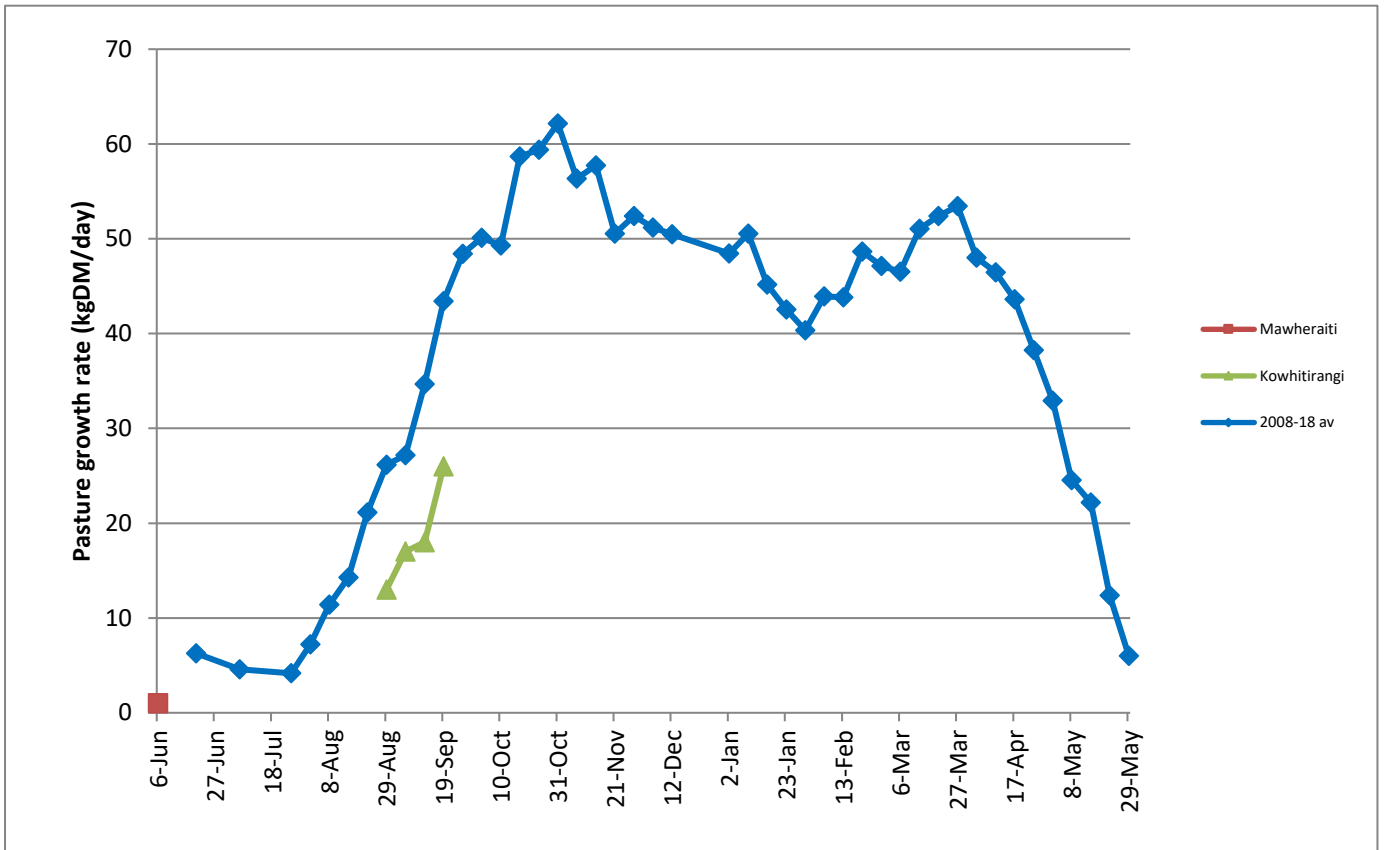
CO comment

Before mating it is important to know what % of the herd has not yet been detected on heat. There is still time before mating starts to do a pre-mating tail paint which can help determine this. Knowing how many animals haven't cycled pre-mating can allow for decisions to be made to improve the mating programme for these animals. Intervening early will allow for better outcomes. There are many forms of intervention including management through priority feeding etc. or specific Veterinary care. Have a look at some options in the InCalf book which is a must have for all dairy farmers at <https://www.dairynz.co.nz/media/5789084/the-incalf-book.pdf> and will give some options around making the best of mating. It is a good idea to discuss these options with your vet. Calf health breakdowns become more common later in the calving period. A build up of bugs in housing can cause problems. Spread older calves outdoors to reduce contamination and continue to ensure new calves get colostrum. For tips on calf care visit <https://www.dairynz.co.nz/animal/calves/>

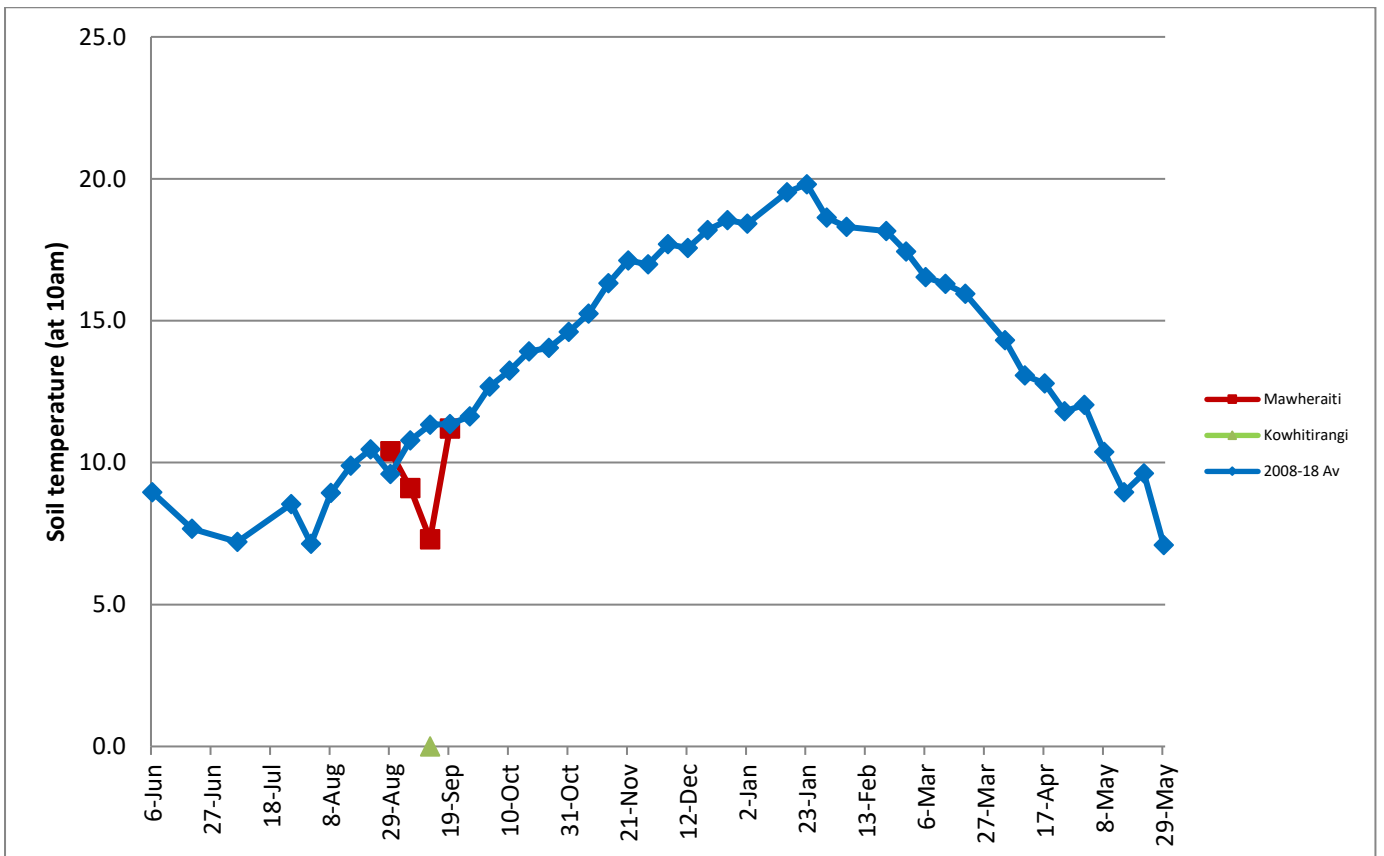
Farm Summary

	Mawheraiti	Kowhitirangi
Average cover (kg DM/ha)	2073	1963
APC	2077	1942
Rotation length (days)	44	37
Stocking rate	2.1	1.8
Percentage in milk		
Milksolids kg/cow	2.08	2.06
Milksolids kg/ha	4.3	3.8
MS/cow (season to date)	38.6	34
MS/ha (season to date)	30.2	26.3
N (kg/ha) year to date		
Current N application rate kg N/ha	20	22
	Mawheraiti	Kowhitirangi
DM%	17.7	17.4
Pasture ME	>12.7	>12.7
Pasture NDF	41.4	39.3
Pasture CP	30.1	26.8
Target Intake (kg DM/cow/d)	20	17
Supplement (kg/cow/day)	1.9	2.4
Soil temperature (°C)	11.2	
Growth Rate (kg DM/day)	26	28
Rainfall	7	35
Conditions for farmwalk	Cold, heavy rain, windy	Stunning, fine day
Comments		

Weekly Pasture Growth Rates



Weekly Soil Temperature



Mawheraiti

Farm Name:- STU AND DEB BLAND
 Date Read :- 17/09/2018
 Average Cover :- 2073 Kg DM/Ha
 Average Growth :- 26 Kg DM/Ha/Day



Kowhitirangi

Farm Name:- ANNA AND JEREMY HART
 Date Read :- 19/09/2018
 Average Cover :- 1963 Kg DM/Ha
 Average Growth :- 28 Kg DM/Ha/Day

