

# Westland Monitor Farm Project

Weekly Update as at week ending Wednesday 23<sup>rd</sup> January 2019

## CO Comment

Last week saw a welcome bit of rain across the West Coast which has helped keep some moisture in the ground.

The North Island is seeing facial eczema (FE) spore counts trending in line with the season where several cases were present on the West Coast.

We can take that as an indication that there may possibly be some clinical cases of FE again this year.

Facial eczema is caused by a toxin (sporidesmin) produced by the spores of the fungus *Pithomyces chartarum* growing on pasture. The fungus grows in the dead litter at the base of pasture in warm moist conditions.

Sporidesmin, when ingested by cattle, damages the liver and bile ducts.

The damaged liver cannot rid the body of wastes and a breakdown product of chlorophyll builds up in the blood causing sensitivity to sunlight, which in turn causes inflammation of the skin.

The fungus produces spores when grass minimum temperatures are above 12°C for two or three nights and humidity is high (usually January to May).

The fungus grows on soft litter at the base of the pasture so hard grazing during danger periods increases the risk of spore intake as does topping which increases the build-up of soft litter.

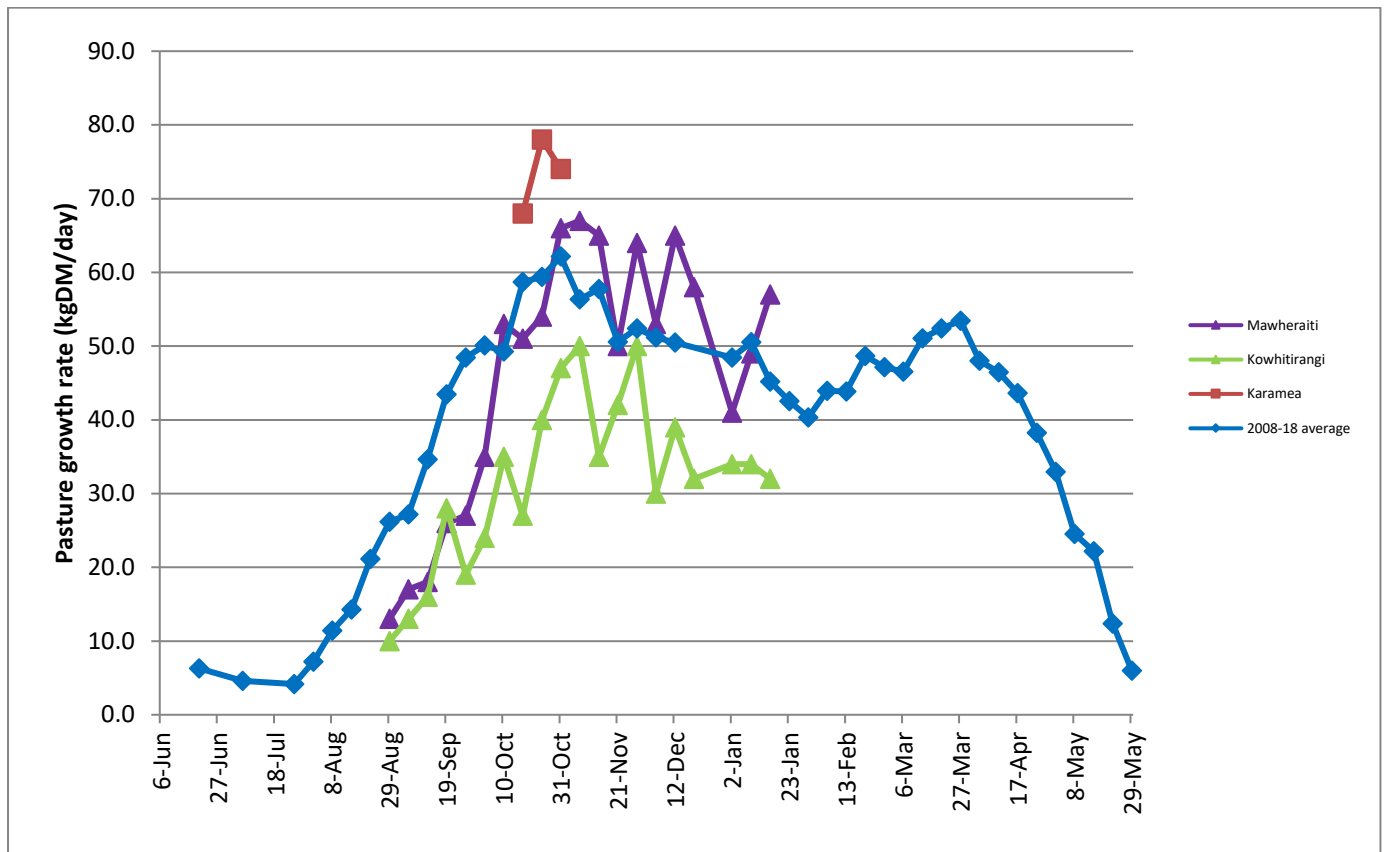
Being proactive and getting spore counts done for your farm will provide the knowledge required to form an action plan if needed. Talk to your vet for the best course of action and for more information about what to look for visit <https://www.dairynz.co.nz/animal/cow-health/facial-eczema/>

## Farm Summary

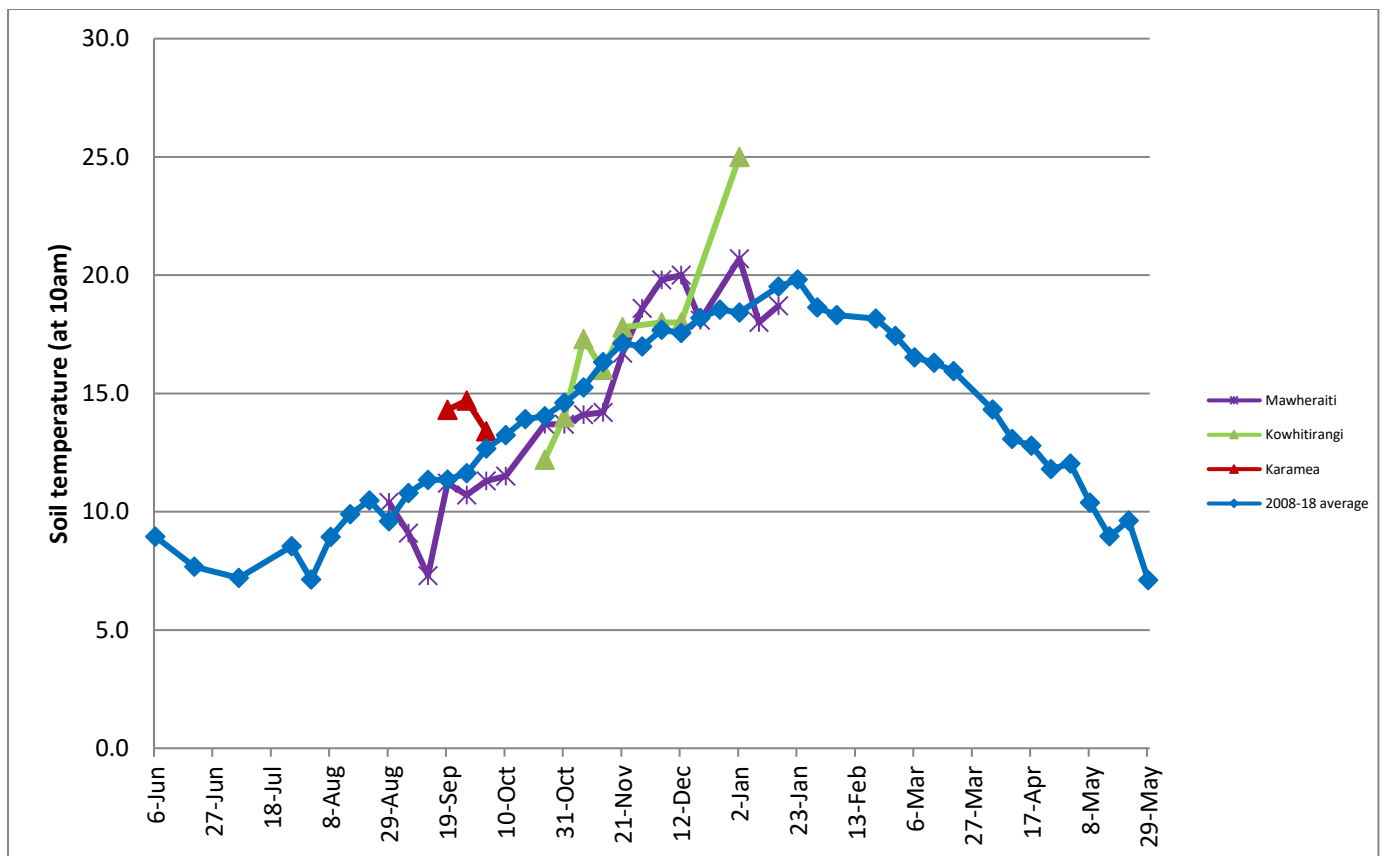
|                                    | Mawheraiti | Kowhitirangi |
|------------------------------------|------------|--------------|
| Average cover (kg DM/ha)           | 2221       | 2070         |
| APC (16 January)                   | 2221       | 2117         |
| Rotation length (days)             | 25         | 26           |
| Stocking rate                      | 2.7        | 2.3          |
| Percentage in milk                 | 100        | 100          |
| Milksolids kg/cow                  | 1.77       | 1.69         |
| Milksolids kg/ha                   | 4.4        | 3.4          |
| MS/cow (season to date)            | 256        | 256          |
| MS/ha (season to date)             | 642        | 522          |
|                                    |            |              |
| N (kg/ha) year to date             | 87         | 158          |
| Current N application rate kg N/ha | 28         | -            |
|                                    |            |              |
|                                    |            |              |
| DM%                                | 16.8       | 16.7         |
| Pasture ME                         | 12.7       | 12.7         |
| Pasture NDF                        | 42.2       | 47.9         |
| Pasture CP                         | 18.8       | 20.8         |
|                                    |            |              |
| Target Intake (kg DM/cow/d)        | 20         | 18           |
| Supplement (kg/cow/day)            | 2.0        | 1.8          |
|                                    |            |              |

|                         |            |                                      |
|-------------------------|------------|--------------------------------------|
| Soil temperature (°C)   | 18.7       | -                                    |
| Growth Rate (kg DM/day) | 57         | 32                                   |
| Rainfall                | 27         | 45                                   |
| Conditions for farmwalk | Fine, warm | Heavy rain,<br>strong winds,<br>warm |
| Comments                |            |                                      |

## Weekly Pasture Growth Rates



## Weekly Soil Temperature



### Mawheraiti



### Kowhitirangi

