

# Westland Monitor Farm Project

**Weekly Update** as at week ending Wednesday 26<sup>th</sup> September 2018

## CO comment

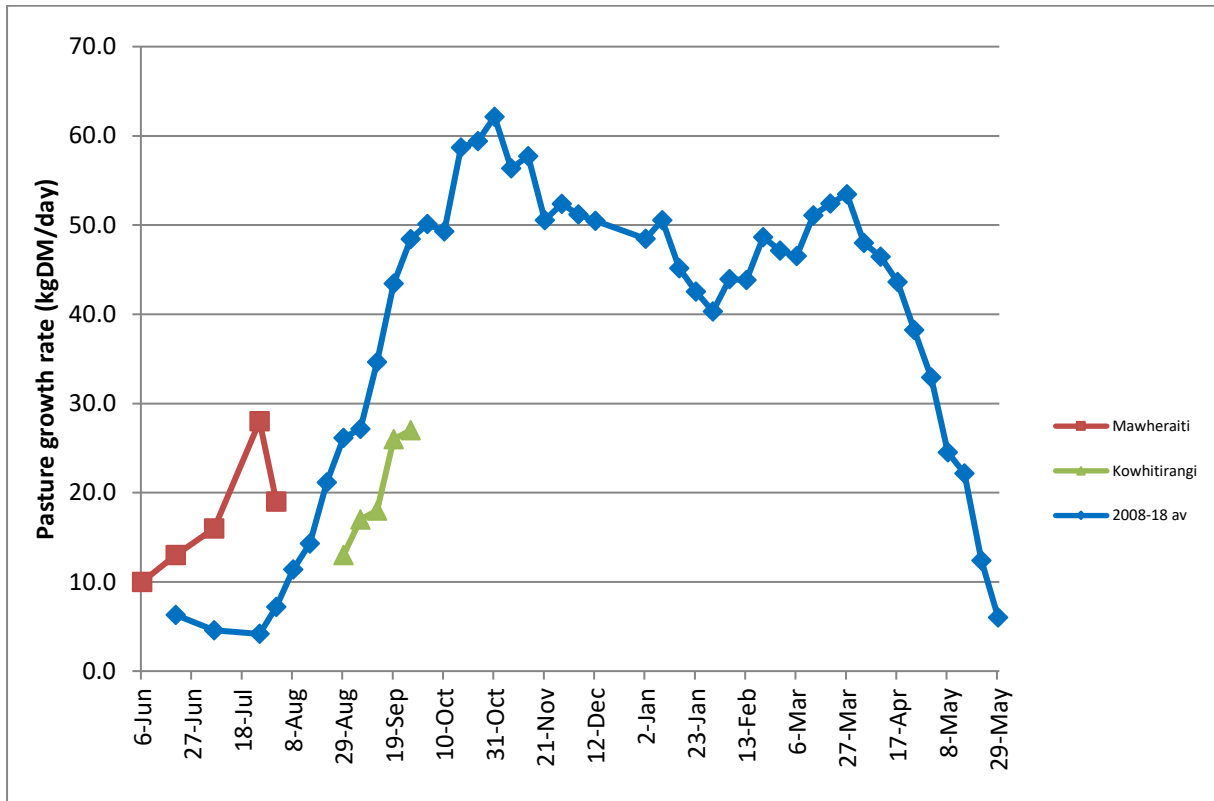
Mating is around the corner, so it is time to develop and implement an efficient heat detection policy for your farm. Farmers who achieve good heat detection results use a combination of good observation and effective use of heat detection aids. Use the time between calving and mating to work on a heat detection policy for your farm. Tail painting cows 35 days before mating and identifying those cows that haven't cycled before mating starts are both strategies to minimise problems. There are trained InCalf advisers available on the West Coast – contact them if you have reproduction issues that you want to solve.

## Farm Summary

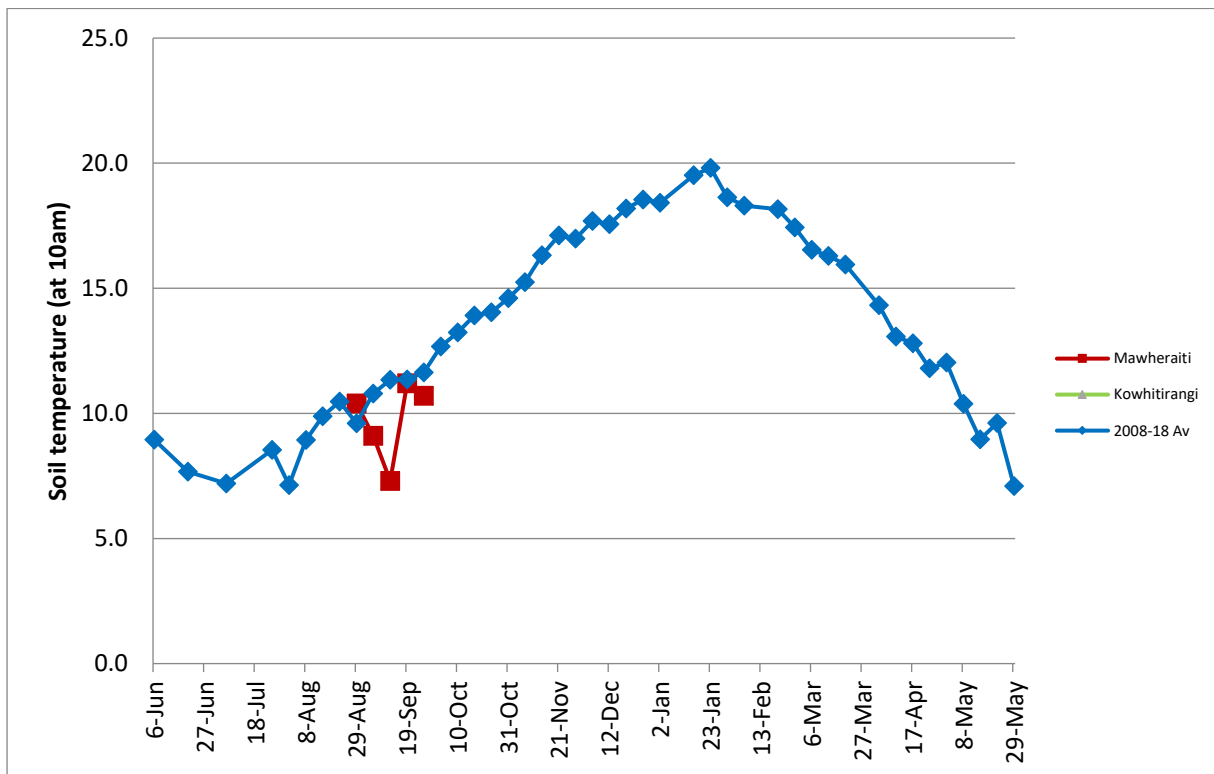
	Mawheraiti	Kowhitirangi
Average cover (kg DM/ha)	2111	1945
APC		
Rotation length (days)	40	36
Stocking rate		
Percentage in milk		
Milksolids kg/cow	2.07	
Milksolids kg/ha	4.9	
MS/cow (season to date)		
MS/ha (season to date)		
N (kg/ha) year to date		
Current N application rate kg N/ha	36	
	Mawheraiti	Kowhitirangi
DM%	17.7	17.4
Pasture ME	>12.7	>12.7
Pasture NDF	41.4	39.3
Pasture CP	30.1	26.8
Target Intake (kg DM/cow/d)	20	
Supplement (kg/cow/day)	5.6	
Soil temperature (°C)	10.7	-
Growth Rate (kg DM/day)	27	19
Rainfall	25	26
Conditions for farmwalk	Fine, cold, close to rain	Heavy rain, cold then fine
Comments		

NB: pasture quality data are for 1 sample collected from each farm

## Weekly Pasture Growth Rates



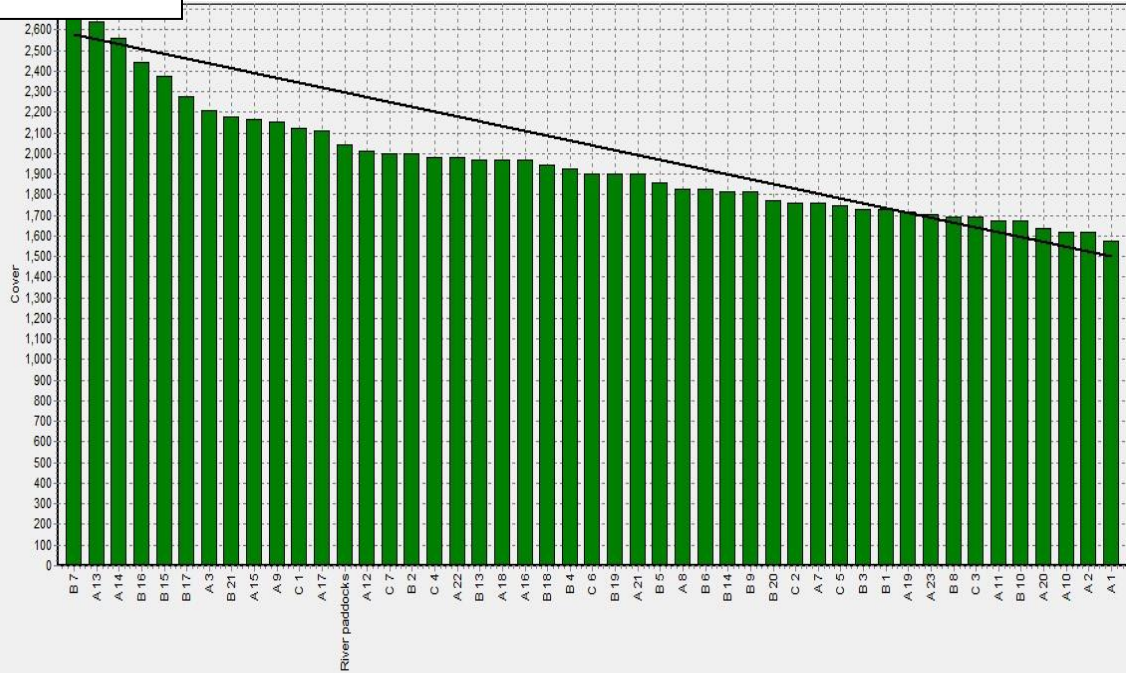
## Weekly Soil Temperature



### Mawheraiti



### Kowhitirangi





Kowhitirangi

Description	Date	RPM	% DM	% Prot	% Lipid	% ADF	% NDF	Sol Sugar	OMD %	MJME/kg
Paddock 5	7/9/2018		17.4	26.8	4.9	18.9	39.3	18.2	91.6	13.4

