

# Westland Monitor Farm Project

Weekly Update as at week ending Wednesday 29<sup>th</sup> May 2019

## CO Comment

With many having dried off or in the process of, now is the time to start reflecting on the season that has been. This will allow the focus to shift to planning for next season. By determining what worked well and planning to implement those things into next season will set the stage for a more efficient workplace. Also looking at what didn't go so well can allow a plan to be made to avoid some of the pitfalls that may have been encountered this season.

Some elements are out of your control, but by focusing on what you can control, a plan can be made which will impact your business in a positive way.

Ensure you have planned breaks for everyone on farm over the slower months to refresh and recharge prior to calving. This includes the decision maker.

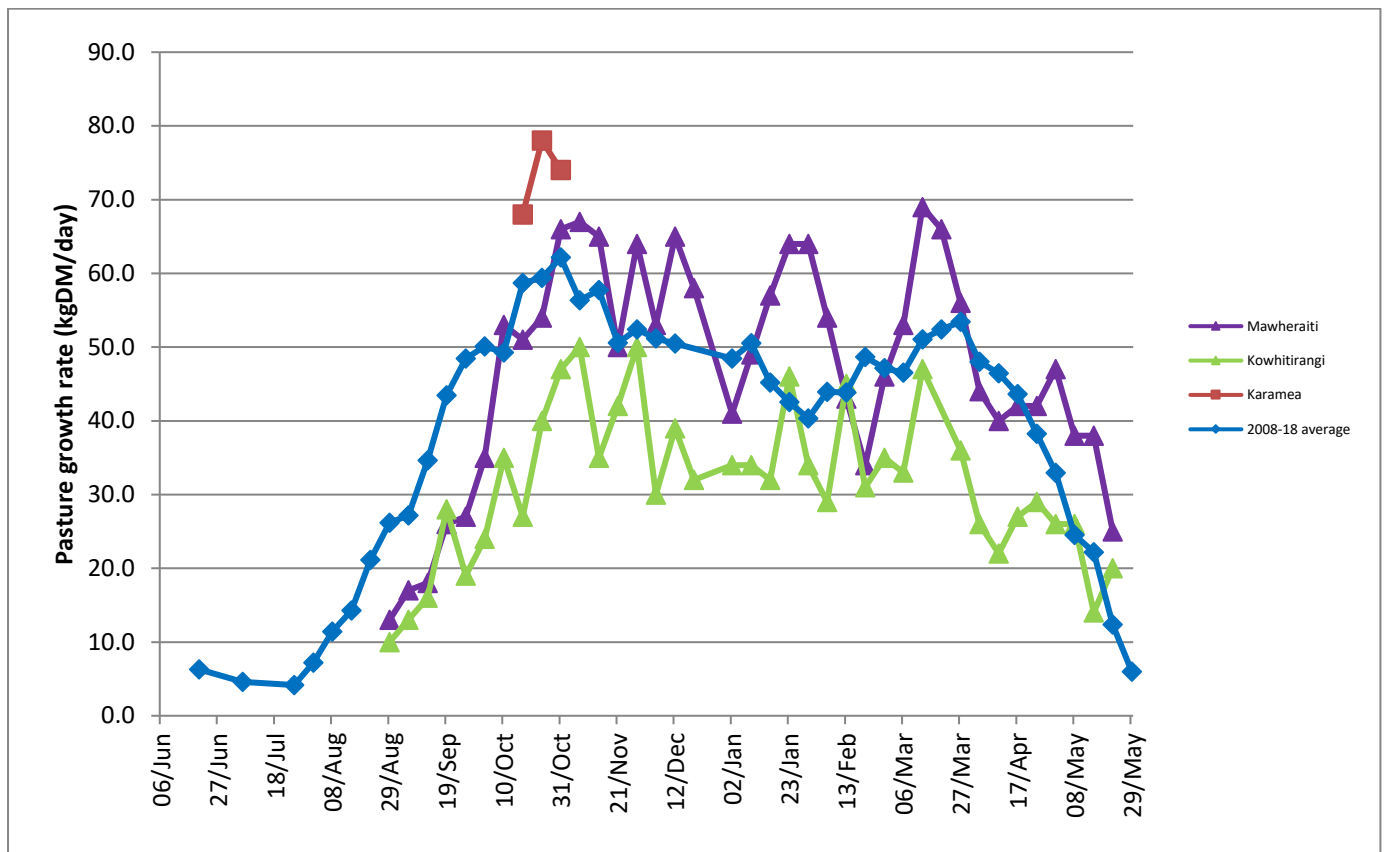
Over the slower months make sure you prepare your team with the tools they need coming into calving. Have a refresher on the expectations and practices required to make calving a success. DairyNZ is bringing two Calving Smart workshops to the West Coast this June. The calving simulator cows will be here, so calving training doesn't get more realistic than that. There will be sessions for all levels – juniors through to decision makers.

Spaces are limited, to register go to <https://www.dairynz.co.nz/events/?region=5454> to find the Calving Smart event nearest to you.

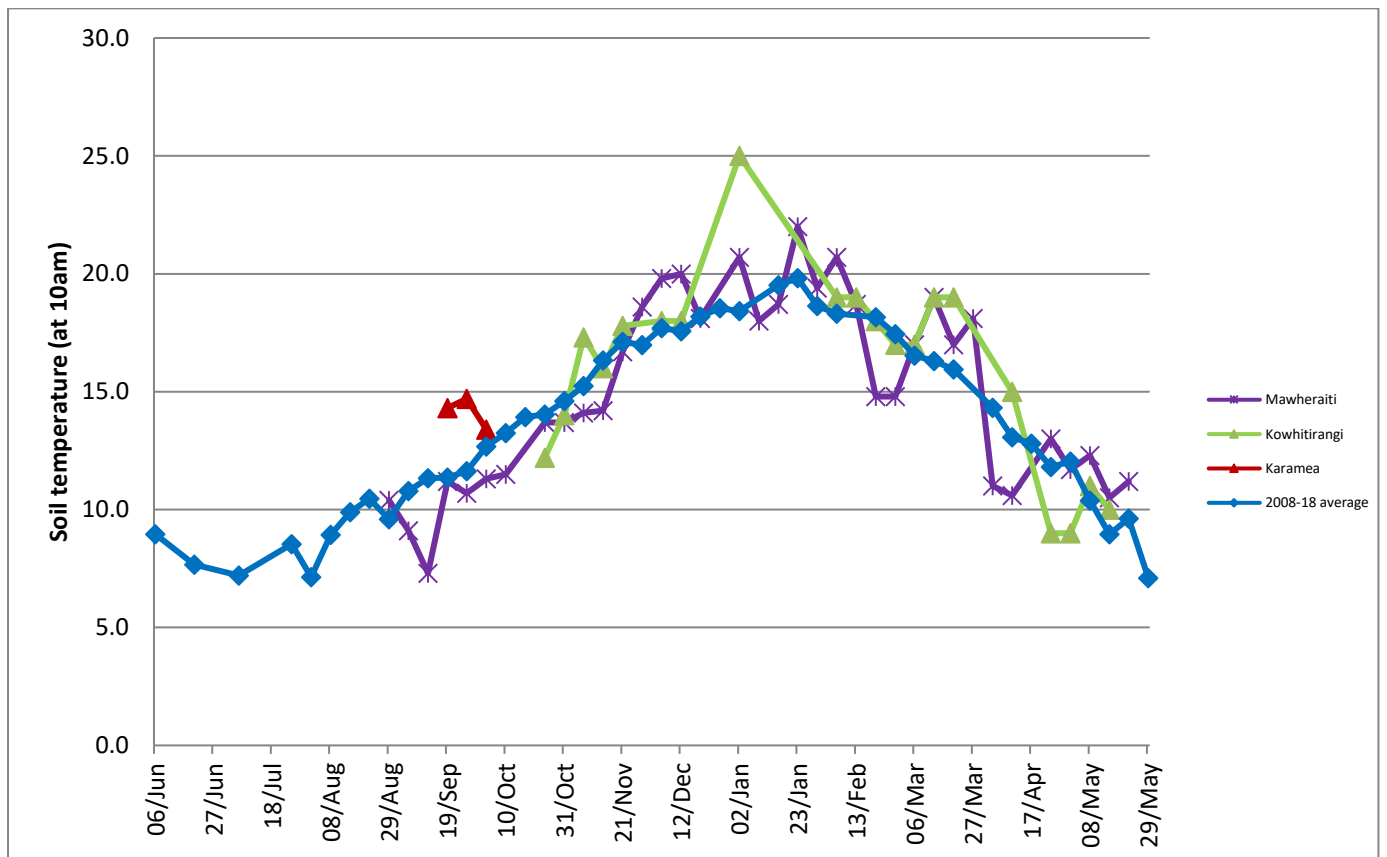
## Farm Summary

	Mawheraiti	Kowhitirangi
Average cover (kg DM/ha)	2193	2036
APC (13 February)	2311	1948
Rotation length (days)	38	
Stocking rate	2.2	
Percentage in milk	100	100
Milksolids kg/cow	1.43	
Milksolids kg/ha	3.2	
MS/cow (season to date)	439	425
MS/ha (season to date)	1110	865
N (kg/ha) year to date	121	178
Current N application rate kg N/ha	-	-
DM%	12.0	11.3
Pasture ME	12.6	13.2
Pasture NDF	50.6	44.1
Pasture CP	28.8	32.1
Target Intake (kg DM/cow/d)	19	
Supplement (kg/cow/day)	6	
Soil temperature (°C)	11.2	-
Growth Rate (kg DM/day)	25	20
Rainfall	2	25
Conditions for farmwalk	Fine	Pouring rain
Comments		

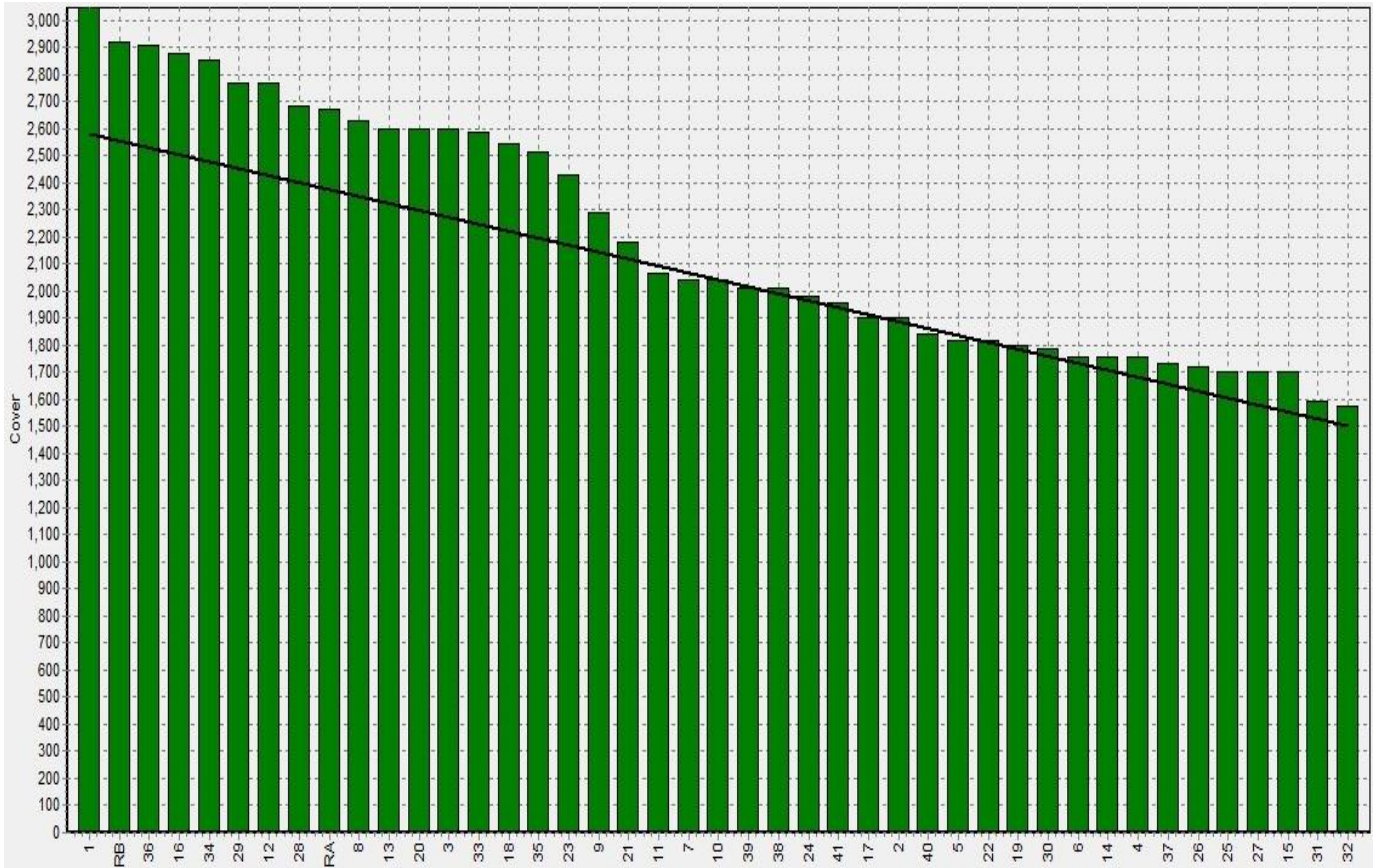
## Weekly Pasture Growth Rates



## Weekly Soil Temperature



### Mawheraiti



### Kowhitirangi

