

Westland Monitor Farm Project

Weekly Update as at week ending Wednesday 30th January 2019

CO Comment

Conditions are favourable over much of the West Coast for pasture growth. It is timely to consider building a feed budget to assess the feed situation over the coming months. There is an autumn rotation planner to ensure you are on track to hit target covers come June 1st. Download it from <https://www.dairynz.co.nz/feed/pasture-management/feed-wedges-and-rotation-planners/autumn-rotation-planner/> to implement from March 1st.

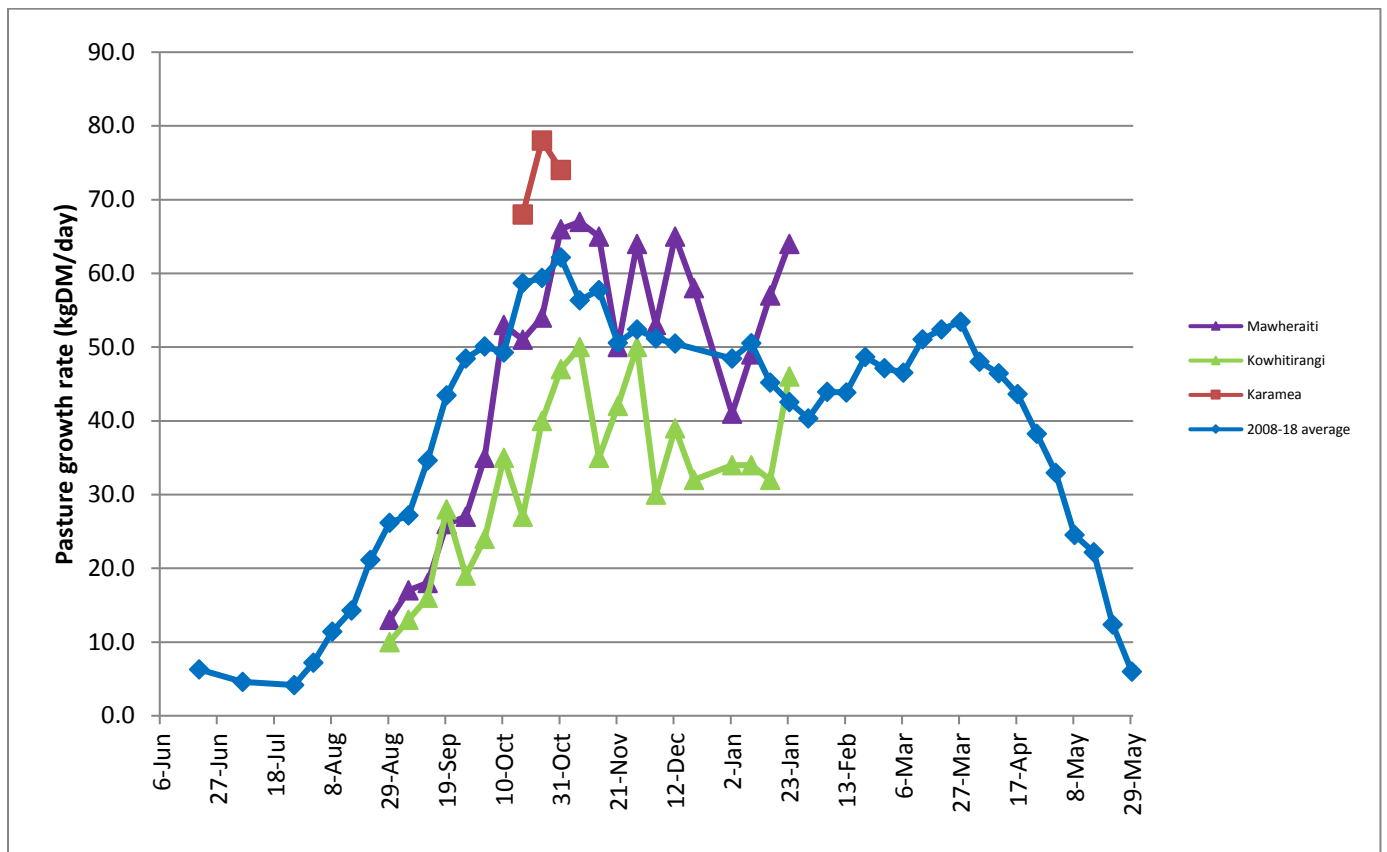
There is an upcoming Biosecurity levy meeting at Shantytown about paying our share of the *M. Bovis* response. It is important to have your questions answered and concerns heard. For details on this event visit <https://www.dairynz.co.nz/events/top-of-si-west-coast/biosecurity-levy-consultation-meeting-west-coast/>

As pregnancy test results come to hand now is the time to assess the position of next season's core herd. Start making a list of definite culls, which can be made up of high SCC, low producers and/or non pregnant animals. Have a plan on when these animals will leave the farm to avoid the risk of sacrificing the core herd.

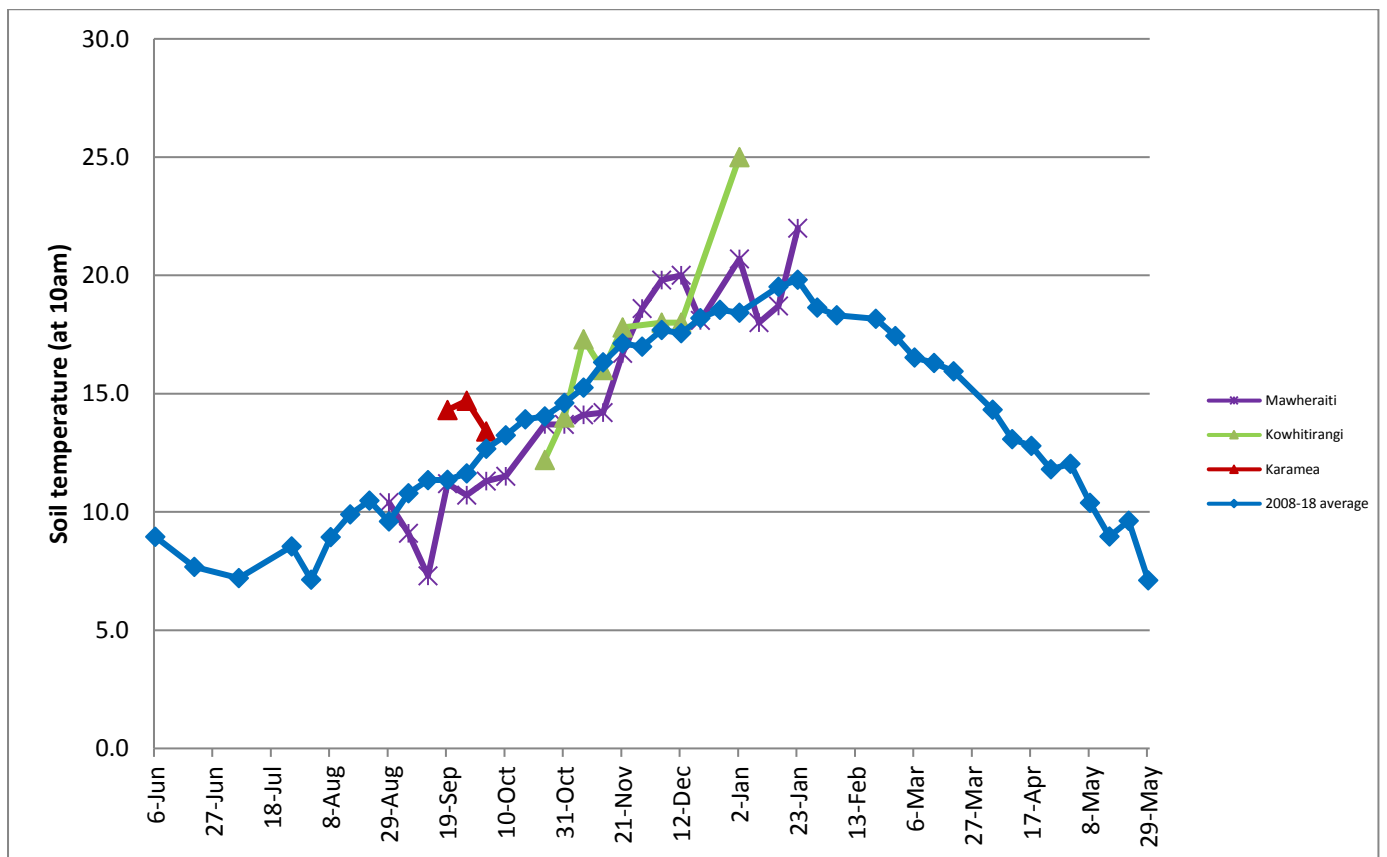
Farm Summary

	Mawheraiti	Kowhitirangi
Average cover (kg DM/ha)	2315	2070
APC (23 January)	2879	2965
Rotation length (days)	25	25
Stocking rate	2.7	2.2
Percentage in milk	100	100
Milksolids kg/cow	1.74	1.51
Milksolids kg/ha	4.3	3.0
MS/cow (season to date)	268	267
MS/ha (season to date)	673	543
N (kg/ha) year to date	91	158
Current N application rate kg N/ha	28	-
DM%	15.3	12.3
Pasture ME	12.3	12.3
Pasture NDF	51.1	51.2
Pasture CP	25.1	28.3
Target Intake (kg DM/cow/d)	20	18
Supplement (kg/cow/day)	2.0	1.0
Soil temperature (°C)	22.0	-
Growth Rate (kg DM/day)	64	46
Rainfall	30	66
Conditions for farmwalk	Very hot and fine	Very hot
Comments		

Weekly Pasture Growth Rates



Weekly Soil Temperature



Mawheraiti



Kowhitirangi

