

Westland Monitor Farm Project

Weekly Update as at week ending Wednesday 5th June 2019

CO Comment

The successful grazing of crop paddocks is achieved through good management of people, cows, and the environment. The performance of your herd in the coming season relies on them calving in good health and being at the target body condition score. Cows must be transitioned onto winter crops to allow the gut bacteria to adjust to a new feed source. Transitioning onto brassicas (kale, swedes, turnips and rape) can be completed over a shorter time frame than fodder beet. Poorly managed transition can result in sick or dead cows.

It is important that cows are allocated enough feed to achieve their body condition score targets. Feed utilisation rates on crop based diets are often lower than grazed pasture diets and must be taken into account when determining appropriate allocations.

Feed utilisation rate can be influenced by grazing management. Reduce trampling wastage by moving the fence once or twice a day rather than offering a few days feed at a time.

Crop is utilised more efficiently when long, narrow breaks, rather than wide breaks, are offered, as less of the crop is trampled. To ensure that all cows have access to the crop, there should be 0.7 metres of feed face per cow. If the paddock has a short feeding face, consider splitting the herd by condition score, and feeding both ends at the same time, rather than running the animals in one larger herd.

For more information around transitioning and common animal health conditions on crop, check out the [feeding and transitioning on to brassicas guide](#)

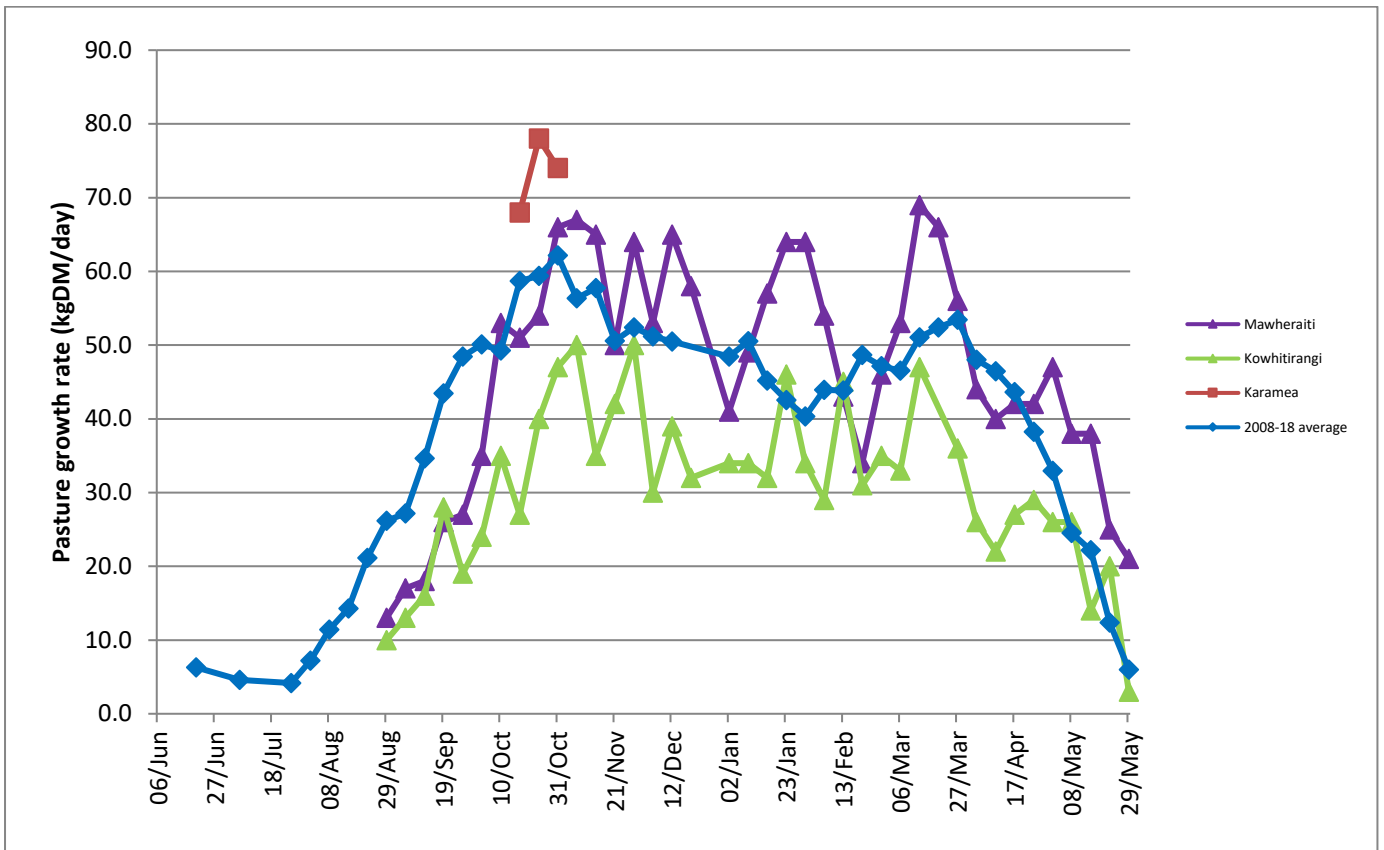
To determine the appropriate feed allocation for your cows, use the [Winter crop allocation calculator](#).

Farm Summary

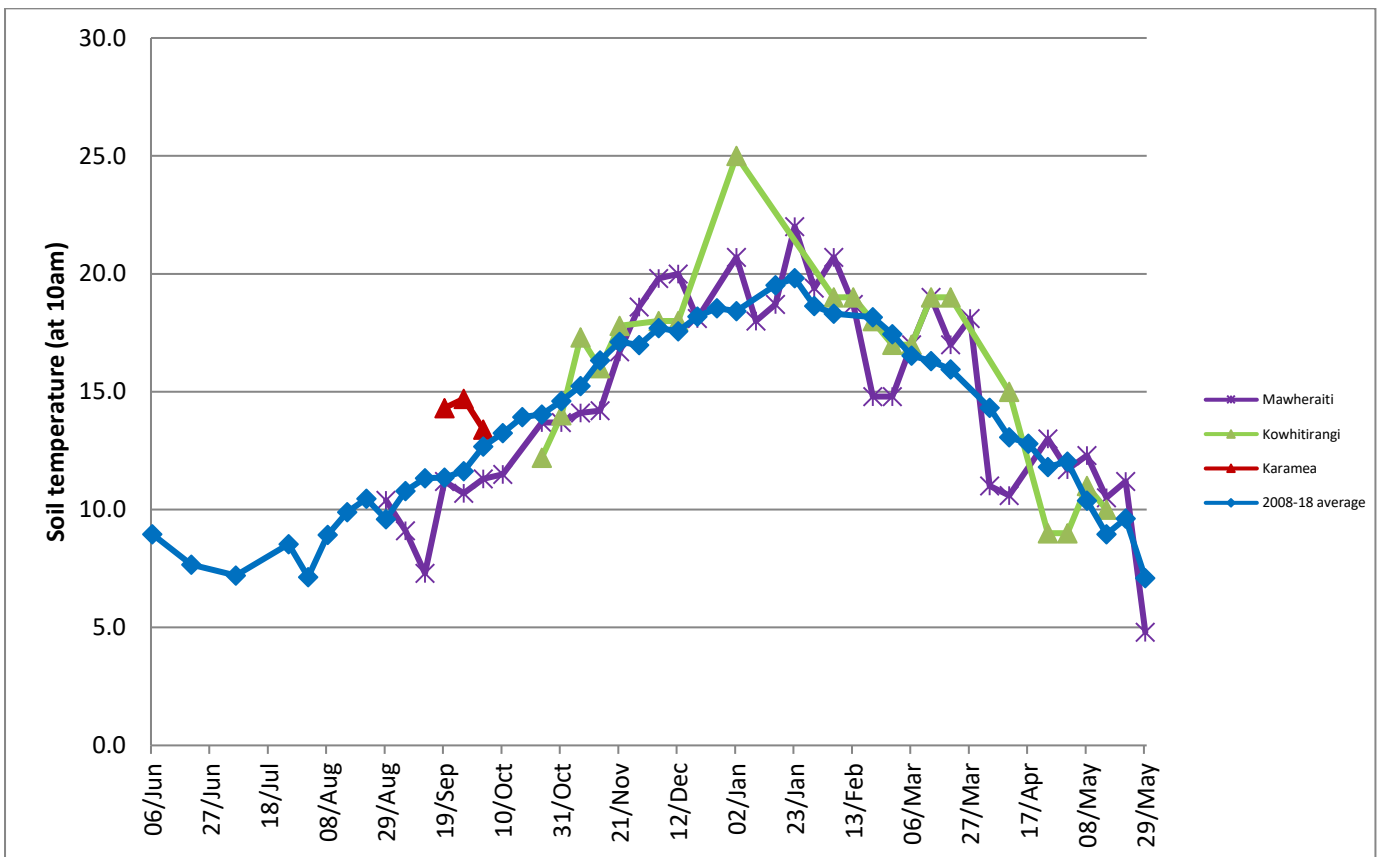
	Mawheraiti	Kowhitirangi
Average cover (kg DM/ha)	2219	2040
APC (13 February)	2193	2036
Rotation length (days)	38	
Stocking rate	2.1	
Percentage in milk	100	
Milksolids kg/cow	1.37	
Milksolids kg/ha	2.9	
MS/cow (season to date)	444	425
MS/ha (season to date)	1123	865
N (kg/ha) year to date	121	178
Current N application rate kg N/ha	-	-
DM%	12.4	9.5
Pasture ME	>12.7	>12.7
Pasture NDF	43.8	41.6
Pasture CP	36.0	36.0
Target Intake (kg DM/cow/d)	16	
Supplement (kg/cow/day)	6	

Soil temperature (°C)	4.8	-
Growth Rate (kg DM/day)	21	3
Rainfall	147	235
Conditions for farmwalk	Big frost, fine cold day	Fine, overcast, frost, very cold -3 degrees
Comments		

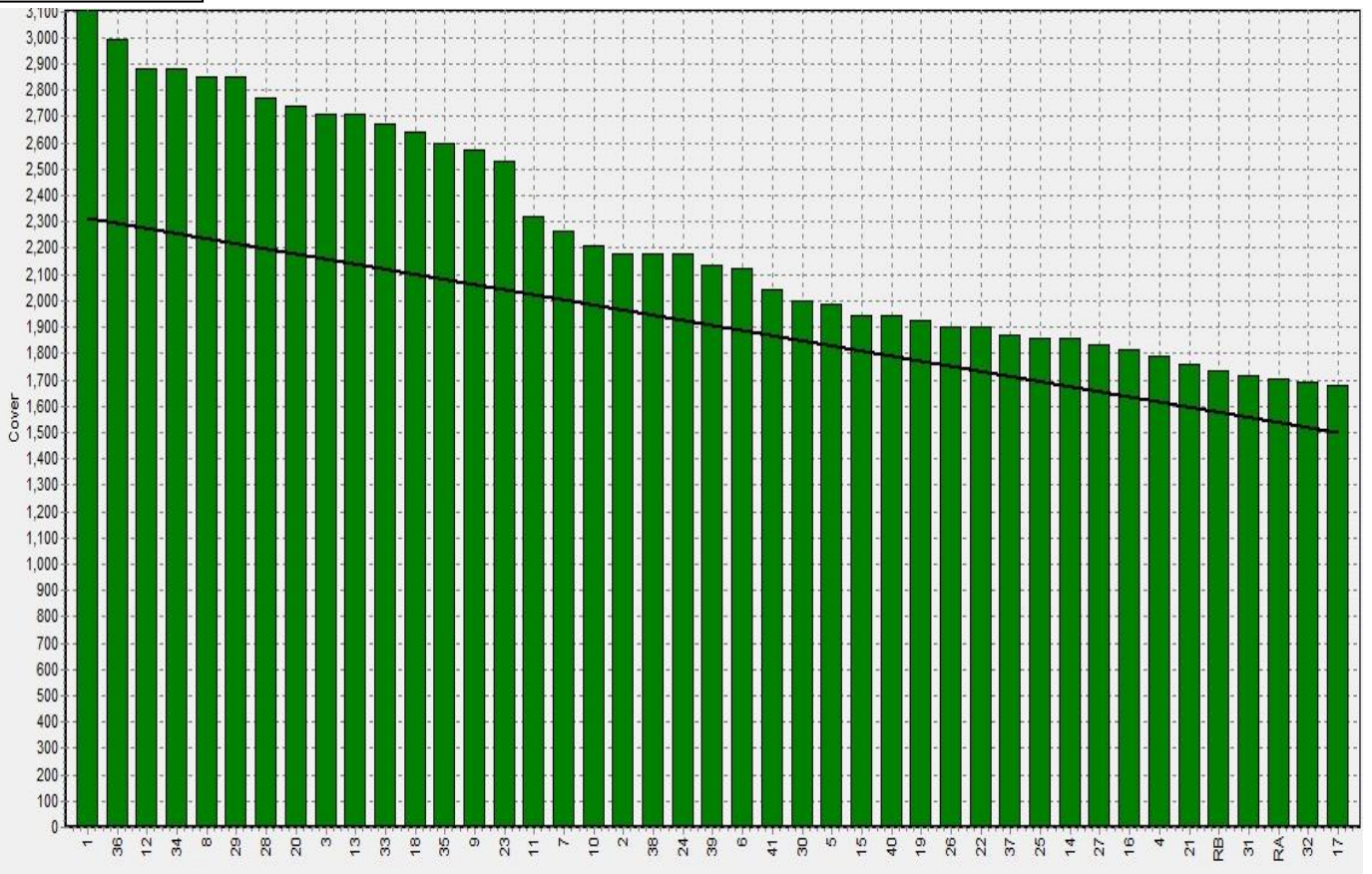
Weekly Pasture Growth Rates



Weekly Soil Temperature



Mawheraiti



Kowhitirangi

