

Westland Monitor Farm Project

Weekly Update as at week ending Wednesday 6th February 2019

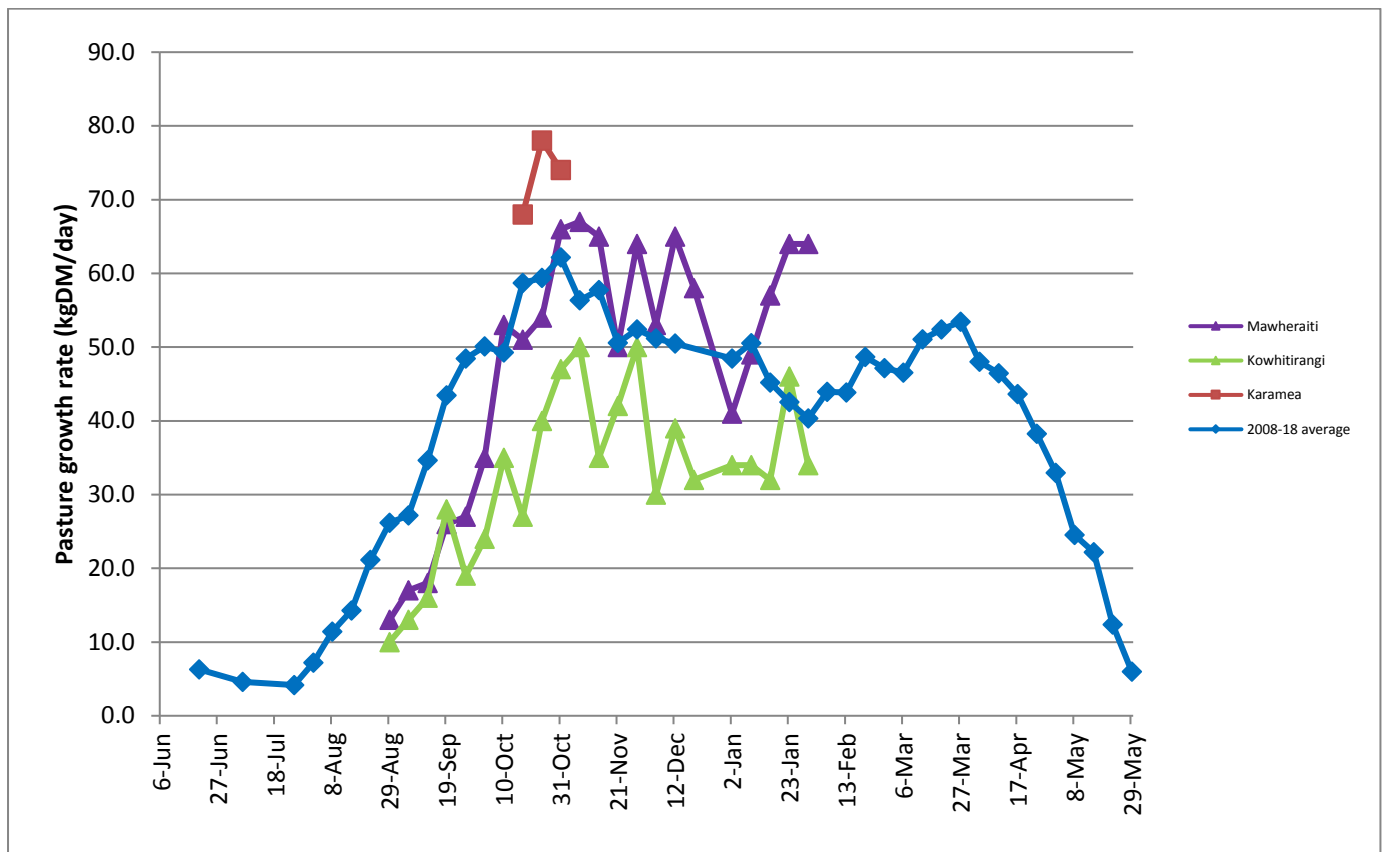
CO Comment

With the season about two thirds completed, now would be a good time to sit down with staff to plan the rest of the season and start the discussion about next season. Take the time to carry out performance appraisals with your staff and update any training plans. This would be a good opportunity to find out if their roles are challenging enough and to also discuss opportunities for further personal development. If staff are leaving it is always useful to ensure that you have a good transition process and carry out an exit interview. If recruiting, develop a clear process to deal with the applications and sort out potential interviewees. For more information, there is a vast resource available on DairyNZ's HR site <https://www.dairynz.co.nz/people/>

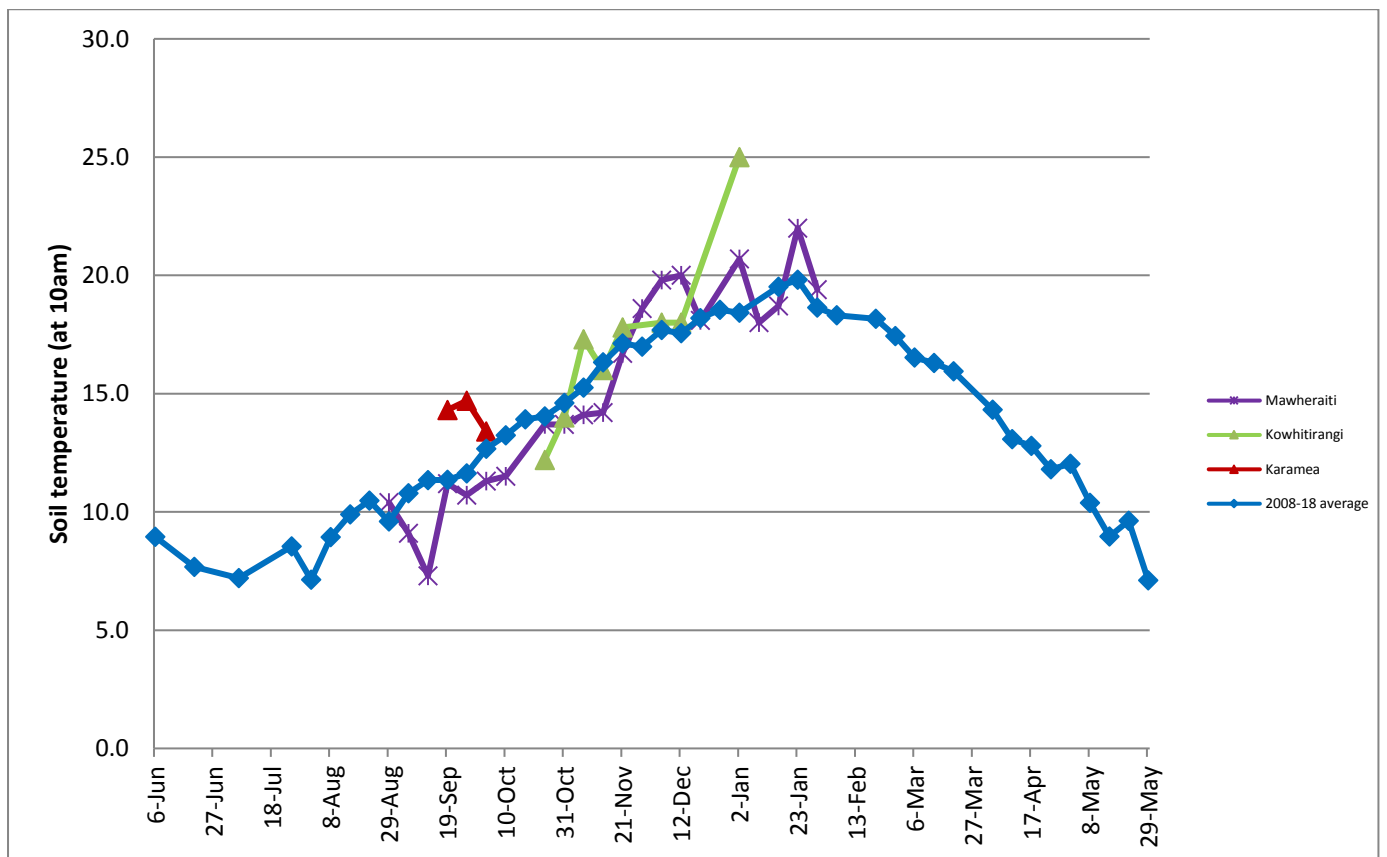
Farm Summary

	Mawheraiti	Kowhitirangi
Average cover (kg DM/ha)	2379	2109
APC (30 January)	2315	2070
Rotation length (days)	25	26
Stocking rate	2.7	2.2
Percentage in milk	100	100
Milksolids kg/cow	1.78	1.49
Milksolids kg/ha	4.4	3.0
MS/cow (season to date)	280	277
MS/ha (season to date)	704	564
N (kg/ha) year to date	95	158
Current N application rate kg N/ha	28	-
DM%	15.3	12.3
Pasture ME	12.3	12.3
Pasture NDF	51.1	51.2
Pasture CP	25.1	28.3
Target Intake (kg DM/cow/d)	20	18
Supplement (kg/cow/day)	2.0	1.0
Soil temperature (°C)	20.0	-
Growth Rate (kg DM/day)	64	34
Rainfall	11	65
Conditions for farmwalk	Hot and fine	Hot and fine
Comments		

Weekly Pasture Growth Rates



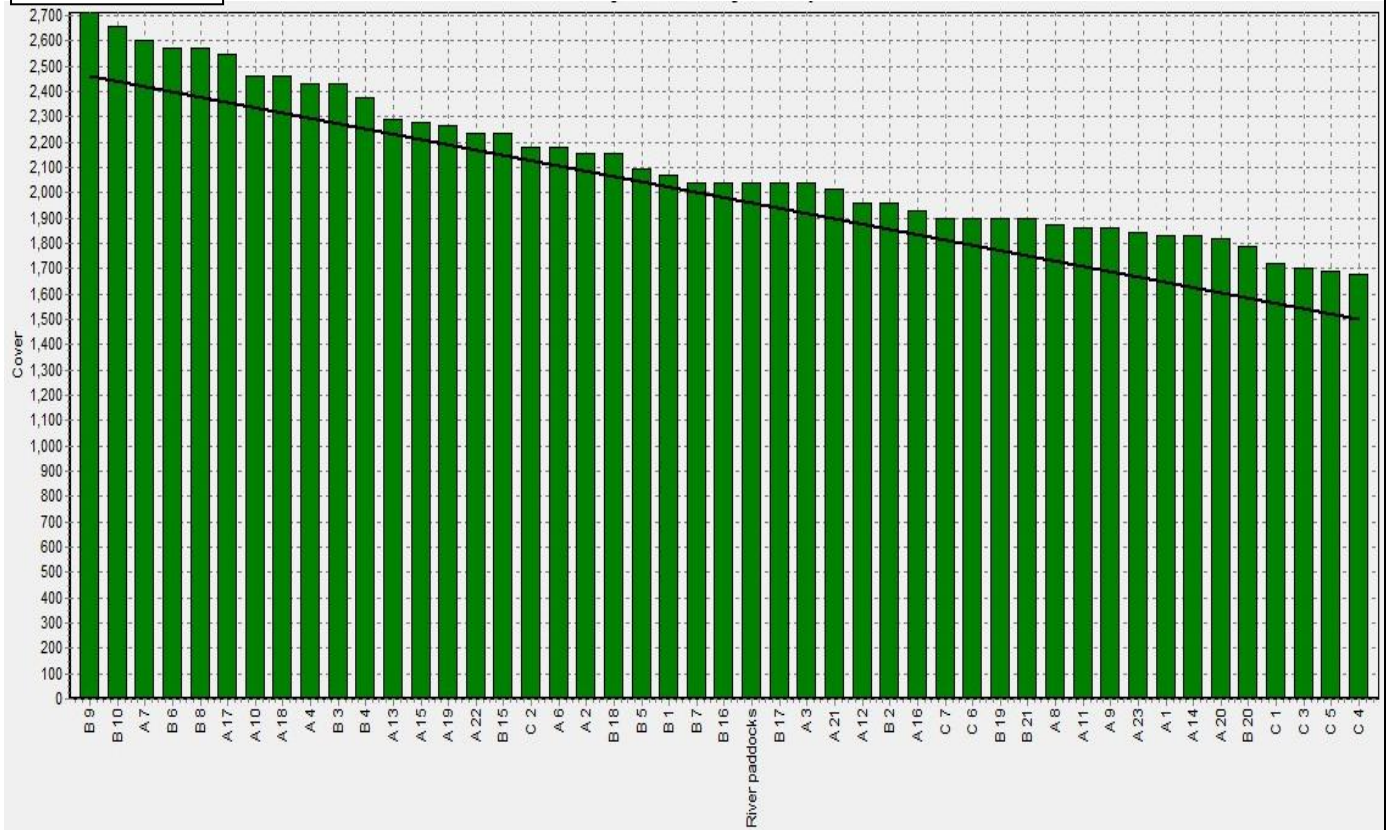
Weekly Soil Temperature



Mawheraiti



Kowhitirangi



Mawheraiti

Description	Date	RPM	% DM	% Prot	% Lipid	% ADF	% NDF	Sol Sugar	OMD %	MJME/kg
Paddock 13	7/9/2018	10.3	17.7	30.1	4.6	18.7	41.4	13.0	92.2	>12.7
Paddock 12	1/10/2018	14.0	13.5	27.7	3.7	21.8	47.1	13.9	>85	>12.7
Paddock 25	5/11/2018	14.6	13.7	22.7	4.3	23.0	43.8	15.1	89.3	>12.7
Paddock 4	4/12/2018	17.4	16.8	18.8	3.6	8.5	23.5	18.2	>85	12.7
Paddock 5	28/1/2019	8.7	15.3	25.1	3.6	22.6	51.1	7.0	84	12.3

