

# Westland Monitor Farm Project

Weekly Update as at week ending Wednesday 6<sup>th</sup> March 2019

## CO Comment

We are officially into Autumn and there are some key strategies to employ to get the best from this time of year and set up for winter.

The focus in autumn is reaching average pasture cover and cow condition targets ready for spring. Where practical and economic this should include keeping cows in milk where body condition is adequate.

Key actions include...

Focus on leaving consistent post-grazing residuals. The secret to achieving this good grazing management is leaving consistent post-grazing residuals and graze pastures at the right time (2.5-3 leaves). Grazing ryegrass pastures too early reduces autumn growth and too late reduces quality.

Body condition score the herd for proactive feed management. Whole herd body condition score (BCS) assessment is a powerful tool to assist proactive feed management during autumn and to sort mobs of cows for differential feeding during winter.

To manage calving BCS targets, the herd must be assessed in early March. There are a number of strategies managers can use to get every cow close to her ideal BCS at calving.

Complete an autumn feed budget to identify feed shortages. An autumn feed budget can be used to reflect on the current feed supply and demand situation, and plan ahead to reach cow condition and pasture cover targets.

Ensure any pasture renewal is a quality job, target autumn pests where possible and build APC by increasing rotation length.

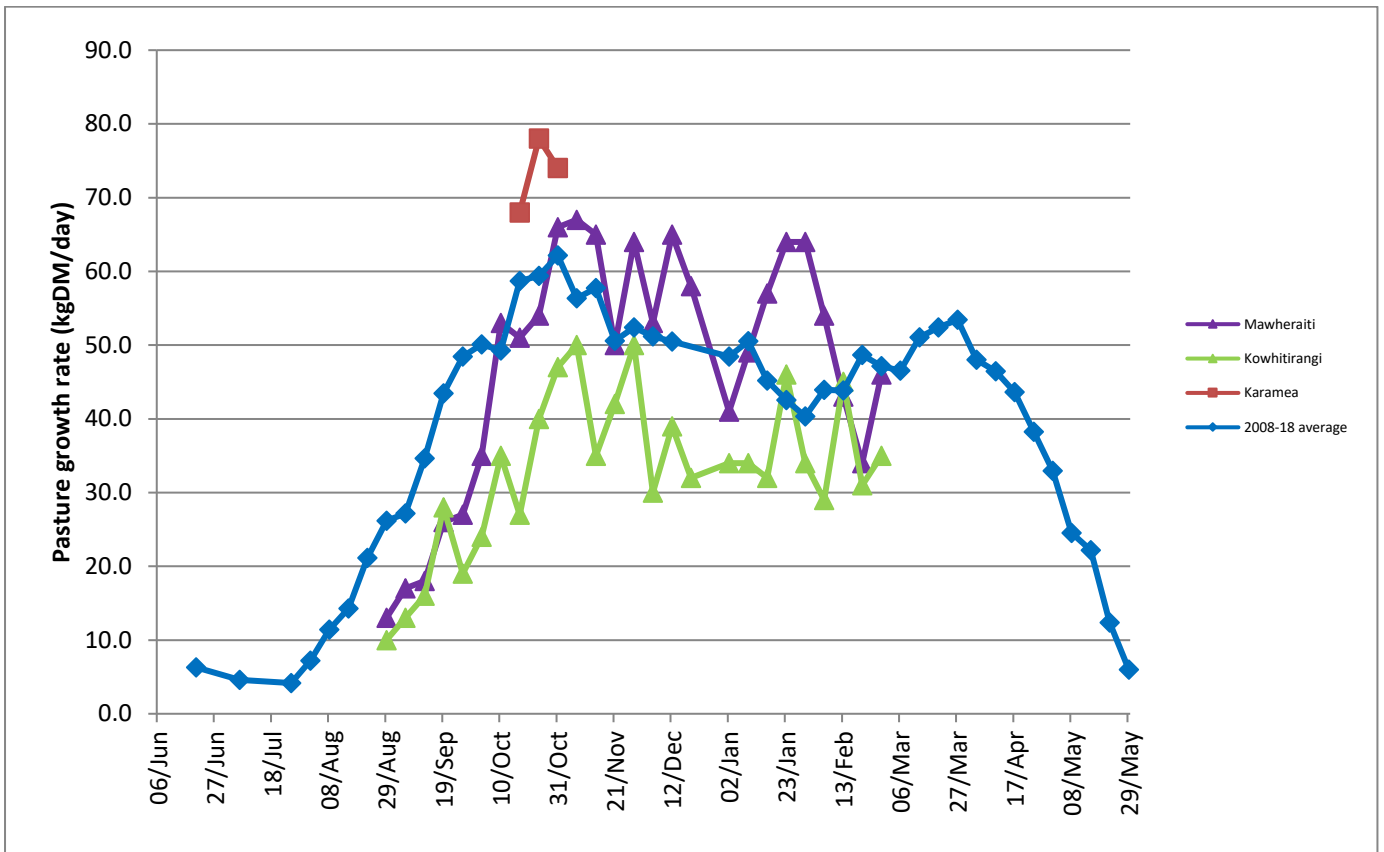
For more detail on Autumn management go to <https://www.dairynz.co.nz/feed/seasonal-management/autumn-management/>

## Farm Summary

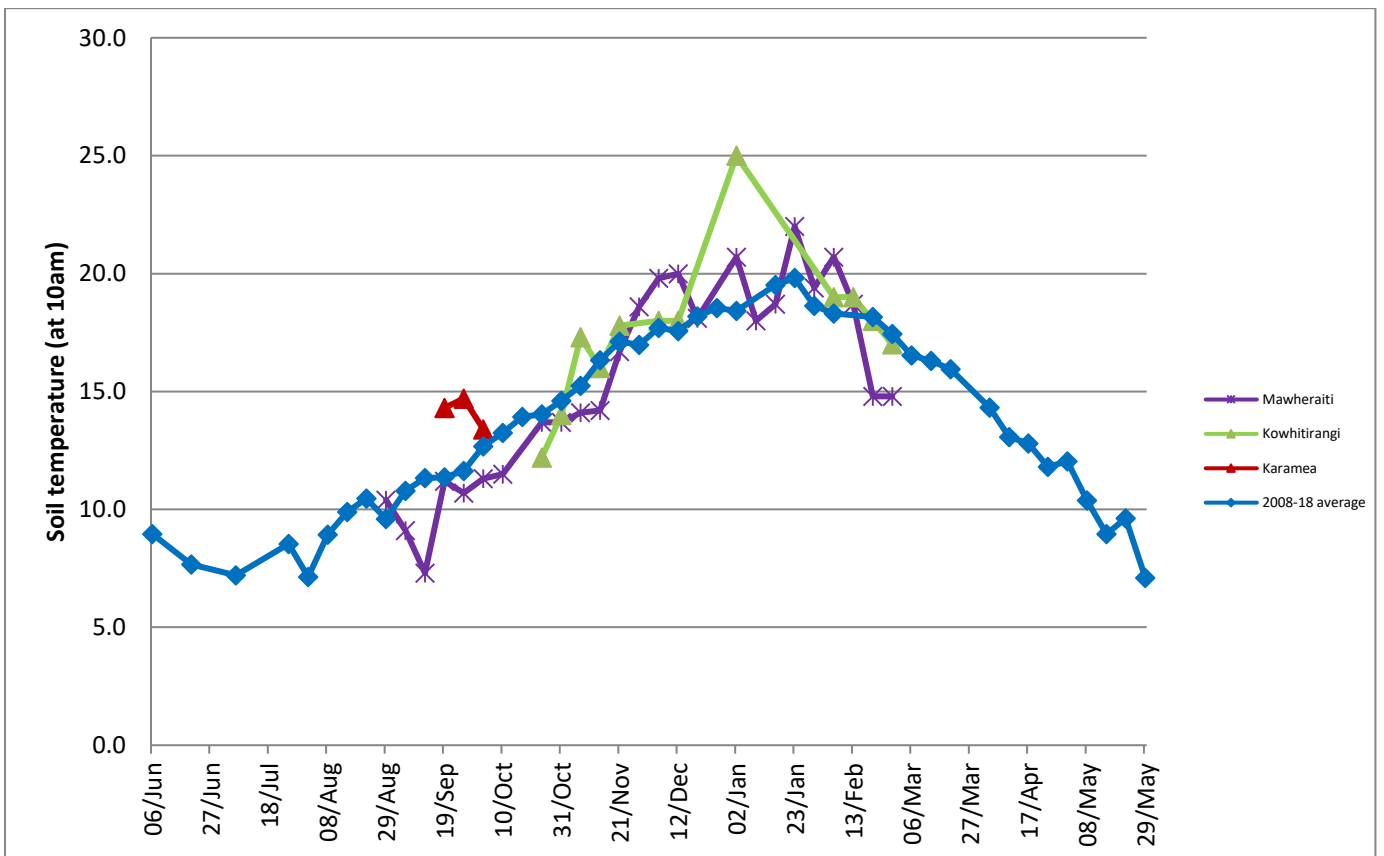
	Mawheraiti	Kowhitirangi
Average cover (kg DM/ha)	2193	2177
APC (13 February)	2189	2156
Rotation length (days)	25	34
Stocking rate	2.7	2.2
Percentage in milk	100	100
Milksolids kg/cow	1.65	1.7
Milksolids kg/ha	4.1	3.4
MS/cow (season to date)	326	319
MS/ha (season to date)	818	648
N (kg/ha) year to date	112	178
Current N application rate kg N/ha	28	
DM%	11.8	13.1

Pasture ME	>12.7	11.8
Pasture NDF	53.5	50.9
Pasture CP	29.2	26.1
Target Intake (kg DM/cow/d)	20	18
Supplement (kg/cow/day)	1.7	1.0
Soil temperature (°C)	14.8	17.0
Growth Rate (kg DM/day)	46	35
Rainfall	4	8
Conditions for farmwalk	Fine and hot	Overcast and hot
Comments		

## Weekly Pasture Growth Rates



## Weekly Soil Temperature



### Mawheraiti



### Kowhitirangi

