

Westland Monitor Farm Project

Weekly Update as at week ending Wednesday 8th May 2019

CO Comment

Last week DairyNZ hosted the West Coast farmers forum in Westport, with approx..75 people turning out to discuss topical issues and to hear about the latest research being undertaken. The two workshops were milking efficiency, with a focus on MaxT and using the fertility research to improve reproductive performance on farm.

Guest speakers included Julia Jones (NZX) discussing some of the observations from her recent travels to China, Hon. Damien O'Connor providing insight into what dairying means to our region and Guy Ryan (CEO; Inspiring Stories) talking about transformational change.

We also had an update from Colin Glass (Director; DairyNZ) on the Dairy Tomorrow strategy.

All of the feedback has been positive with most saying they took something away from the milking efficiency workshop. We spend about 50% of our time on farm milking, so if there is an opportunity to save some time here, it will have a positive effect on the rest of the day's tasks.

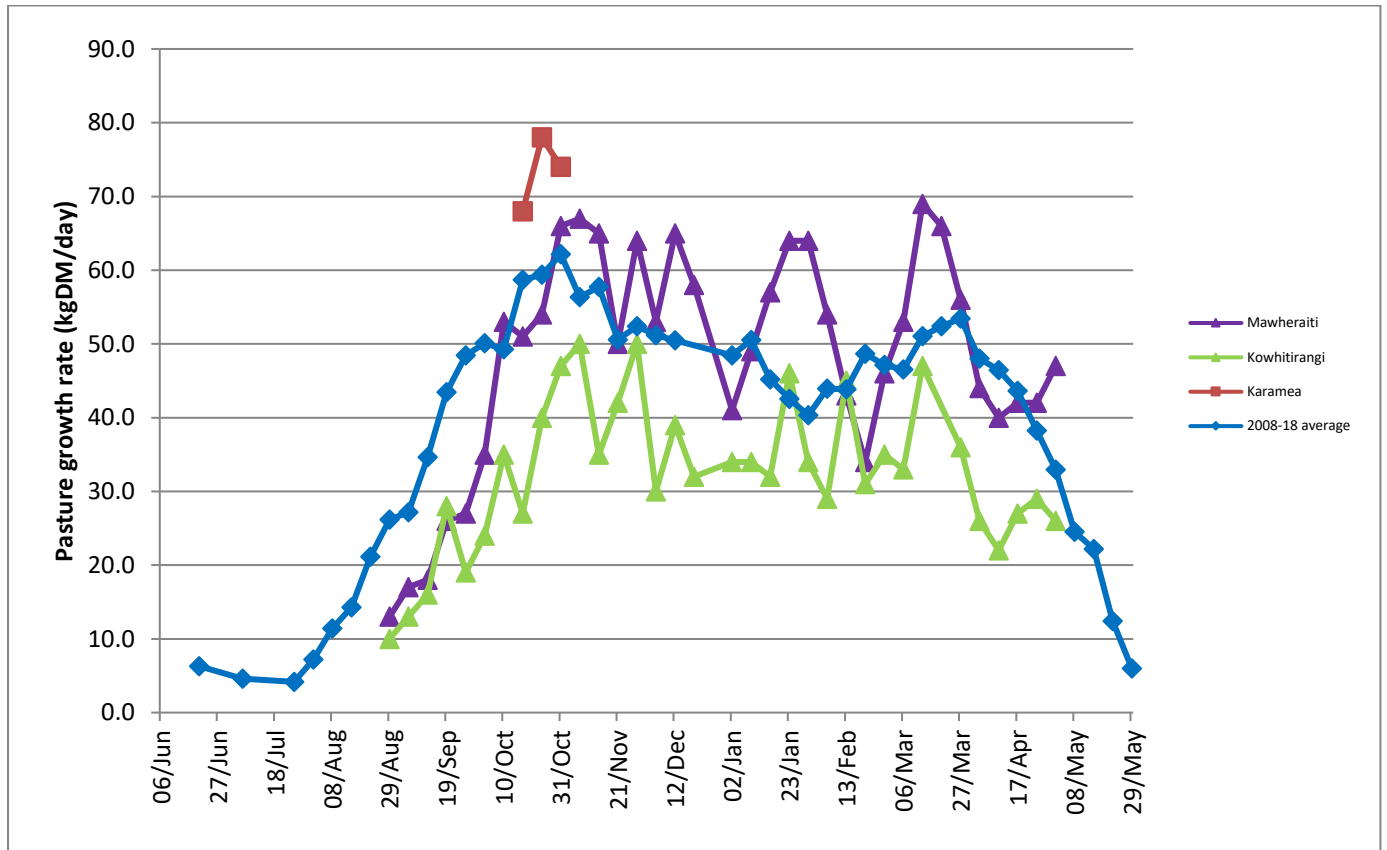
It is a common misunderstanding that under-milking reduces milk yield, increases the risk of mastitis and may increase SCC. This is not supported by the research and instead shows that earlier removal of the cups results in improved teat condition, shorter milking times and has no effect on mastitis and production.

For more information on milking efficiency along with some calculators and strategies that you could implement on farm to save time visit <https://www.dairynz.co.nz/milking/>

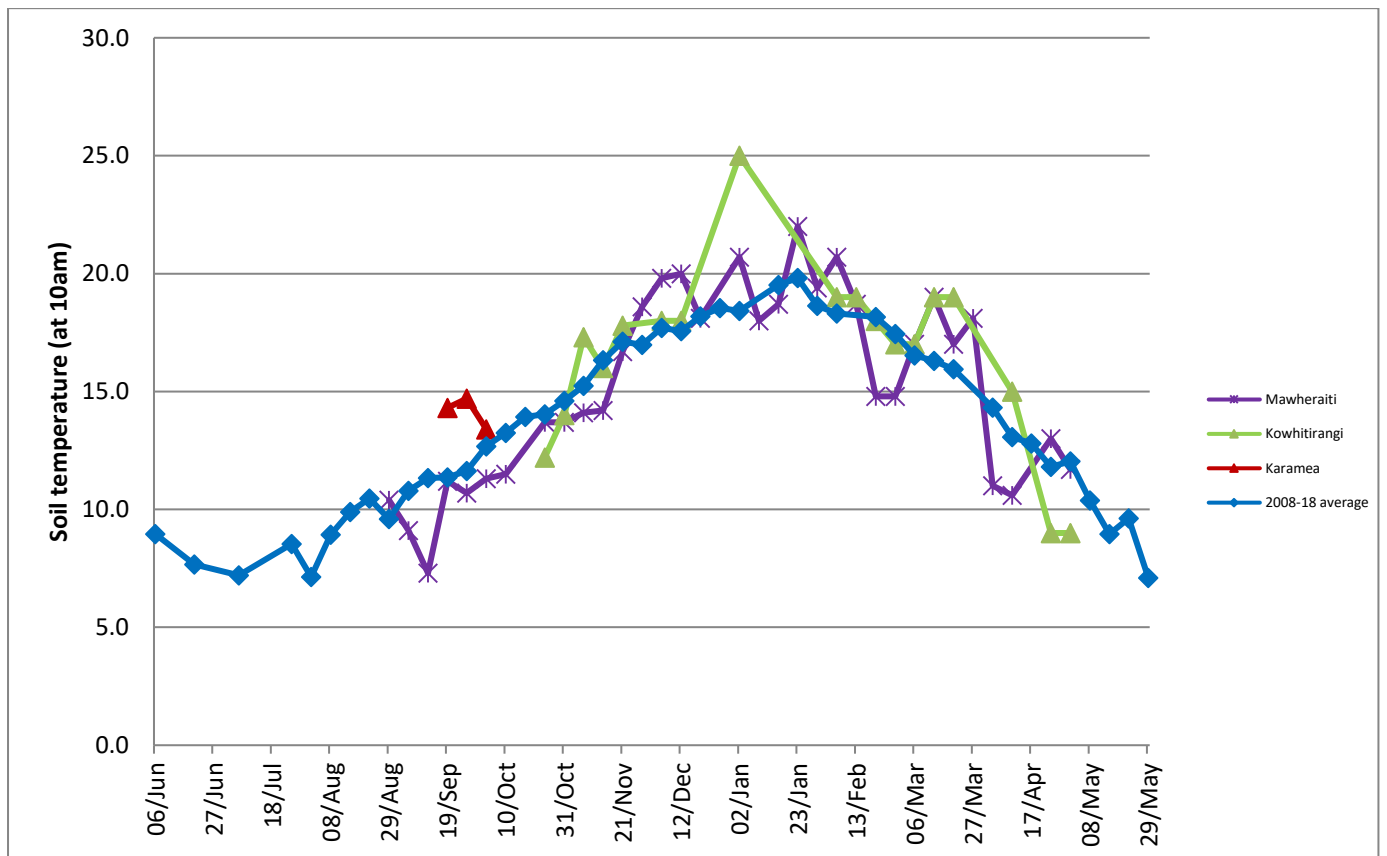
Farm Summary

	Mawheraiti	Kowhitirangi
Average cover (kg DM/ha)	2320	1998
APC (13 February)	2308	2057
Rotation length (days)	34	30
Stocking rate	2.4	2.1
Percentage in milk	100	100
Milksolids kg/cow	1.53	1.54
Milksolids kg/ha	3.4	2.9
MS/cow (season to date)	413	403
MS/ha (season to date)	1037	821
N (kg/ha) year to date	121	178
Current N application rate kg N/ha	-	-
DM%	12.1	12.9
Pasture ME	12.3	12.4
Pasture NDF	50.5	52.6
Pasture CP	31.6	28.0
Target Intake (kg DM/cow/d)	19	18
Supplement (kg/cow/day)	6	3.8
Soil temperature (°C)	11.7	9
Growth Rate (kg DM/day)	47	26
Rainfall	1	5
Conditions for farmwalk	Beautiful day	Beautiful day
Comments		

Weekly Pasture Growth Rates



Weekly Soil Temperature



Mawheraiti



Kowhitirangi

